



Daniele Corsi

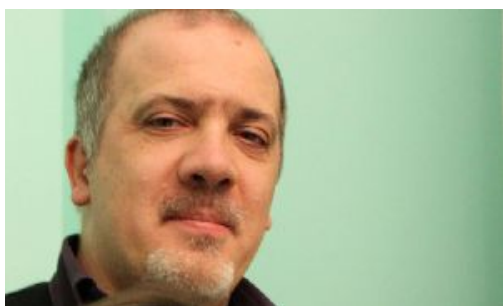
Compositeur

Italie, Roma

A propos de l'artiste

Classical contemporary composer.

A propos de la pièce



Titre:	Im Monat Mai
Compositeur:	Corsi, Daniele
Licence:	Copyright
Editeur:	Edizioni Sconfinate
Instrumentation:	1 Piano, 4 mains (duo)
Style:	Contemporain

Daniele Corsi sur [free-scores.com](http://www.free-scores.com)

http://www.free-scores.com/partitions_gratuites_danielecorsi.htm

- Contacter l'artiste
- Commenter cette partition
- Ajouter votre interprétation MP3 de cette partition



Cette partition ne fait pas partie du domaine public. Merci de contacter l'artiste pour toute utilisation hors du cadre privé.

Im monat mai

Daniele Corsi

♩ = 68

I esecutore

pp

Ad. -----

♩ = 68

II esecutore

pp

Ad. ----- *Ad.*

Pno. 1

pp

7

3

Pno. 2

7

6

Ad. ----- *

11

Pno. 1

pp

3

3

11

Pno. 2

pp

3

7

3

Red. -----! *

Red. -----! *

14

Pno. 1

pp

14

Pno. 2

pp

7

Red. -----! *

Red. -----! *

18 $\text{♩} = 72$

Pno. 1

ppp

pp

18 $\text{♩} = 72$

Pno. 2

ppp

pp

leo.

23

Pno. 1

pp

23

Pno. 2

pp

leo.

27

Pno. 1

pp *p*

Pno. 2

p

Red.

Detailed description: This system contains measures 27 through 30. Pno. 1 (top) has a treble clef and a key signature of one sharp (F#). Measure 27 starts with a whole rest in the treble and a half note G4 in the bass. Measure 28 has a half note G4 in the treble and a half note G4 in the bass. Measure 29 has a whole rest in the treble and a half note G4 in the bass. Measure 30 has a half note G4 in the treble and a half note G4 in the bass. Pno. 2 (bottom) has a treble and bass clef. Measure 27 has a treble staff with a triplet of eighth notes (F#4, G4, A4) and a bass staff with a triplet of eighth notes (F#3, G3, A3). Measure 28 has a treble staff with a half note G4 and a bass staff with a half note G3. Measure 29 has a treble staff with a half note G4 and a bass staff with a half note G3. Measure 30 has a treble staff with a half note G4 and a bass staff with a half note G3. A redaction mark (dashed line) is present at the bottom of the Pno. 2 system.

31

Pno. 1

Pno. 2

Detailed description: This system contains measures 31 through 34. Pno. 1 (top) has a treble clef and a key signature of one sharp (F#). Measure 31 has a triplet of eighth notes (F#4, G4, A4) in the treble and a half note G4 in the bass. Measure 32 has a half note G4 in the treble and a half note G4 in the bass. Measure 33 has a half note G4 in the treble and a half note G4 in the bass. Measure 34 has a half note G4 in the treble and a half note G4 in the bass. Pno. 2 (bottom) has a treble and bass clef. Measure 31 has a treble staff with a triplet of eighth notes (F#4, G4, A4) and a bass staff with a triplet of eighth notes (F#3, G3, A3). Measure 32 has a treble staff with a half note G4 and a bass staff with a half note G3. Measure 33 has a treble staff with a half note G4 and a bass staff with a half note G3. Measure 34 has a treble staff with a half note G4 and a bass staff with a half note G3. A redaction mark (dashed line) is present at the bottom of the Pno. 2 system.

35

Pno. 1

p

Pno. 2

35

This system contains measures 35, 36, and 37. Pno. 1 (top) begins with a piano (*p*) dynamic. It features a triplet of eighth notes in measure 35, followed by a slur over a half note and a quarter note in measure 36, and another triplet of eighth notes in measure 37. Pno. 2 (bottom) starts with a *leg.* marking. It has a triplet of eighth notes in measure 35, a slur over a half note and a quarter note in measure 36, and a triplet of eighth notes in measure 37.

38

Pno. 1

Pno. 2

38

This system contains measures 38, 39, and 40. Pno. 1 (top) starts with a piano (*p*) dynamic. It features a slur over a half note and a quarter note in measure 38, followed by a quarter note and a half note in measure 39, and a slur over a half note and a quarter note in measure 40. Pno. 2 (bottom) starts with a piano (*p*) dynamic and a *leg.* marking. It has a slur over a half note and a quarter note in measure 38, a triplet of eighth notes in measure 39, and a slur over a half note and a quarter note in measure 40.

Piano score for Pno. 1 and Pno. 2, measures 41-43.

Pno. 1: Measures 41-43. Treble clef. Measure 41 features a triplet of eighth notes (F#4, G#4, A4) followed by a dotted quarter note (B4). Measure 42 features a triplet of eighth notes (F#4, G#4, A4) followed by a dotted quarter note (B4). Measure 43 features a quarter note (F#4) followed by a dotted quarter note (G#4). Dynamics: *mp*.

Pno. 2: Measures 41-43. Treble and Bass clefs. Measure 41 features a triplet of eighth notes (F#4, G#4, A4) followed by a dotted quarter note (B4). Measure 42 features a quarter note (F#4) followed by a dotted quarter note (G#4). Measure 43 features a quarter note (F#4) followed by a dotted quarter note (G#4). Dynamics: *mp*. Includes a fermata over the final measure and a *ped.* marking.

Piano score for Pno. 1 and Pno. 2, measures 44-46.

Pno. 1: Measures 44-46. Treble clef. Measure 44 features a quarter note (F#4) followed by a dotted quarter note (G#4). Measure 45 features a triplet of eighth notes (F#4, G#4, A4) followed by a dotted quarter note (B4). Measure 46 features a quarter note (F#4) followed by a dotted quarter note (G#4). Dynamics: *mf*.

Pno. 2: Measures 44-46. Treble and Bass clefs. Measure 44 features a quarter note (F#4) followed by a dotted quarter note (G#4). Measure 45 features a quarter note (F#4) followed by a dotted quarter note (G#4). Measure 46 features a quarter note (F#4) followed by a dotted quarter note (G#4). Dynamics: *mf*. Includes a fermata over the final measure and a *ped.* marking.

47

Pno. 1

mf

Pno. 2

3

mf

ped.

*

50

Pno. 1

mf

f

Pno. 2

3

ped.

*

53

Pno. 1

Pno. 2

56

Pno. 1

Pno. 2

59

Pno. 1

Pno. 2

61

Pno. 1

Pno. 2

lunga

Poco più lento

Pno. 1

64 *f* *Gliss.* *f*

Pno. 2

64 *ff* *ff Led.*

Pno. 1

70 *f* *Gliss.*

Pno. 2

70 *ff* *ff Led.*

Piano score for Pno. 1 and Pno. 2, measures 75-84.

Pno. 1: Treble clef. Measures 75-84 feature a series of glissandi. The notation includes slurs over the strings with the word "Gliss." written above. A "Glissando" instruction is placed above the first measure. The melody consists of a sequence of notes with a glissando effect applied to each.

Pno. 2: Bass clef. Measures 75-84 feature a series of chords. The notation includes slurs over the chords with the word "Gliss." written above. A dynamic marking of *ff* (fortissimo) is present in measure 76. A "Red." (Reduction) instruction is placed below the staff in measure 76. The chords are sustained throughout the measures.

Piano score for Pno. 1 and Pno. 2, measures 78-84.

Pno. 1: Treble clef. Measures 78-84 feature a series of glissandi. The notation includes slurs over the strings with the word "Gliss." written above. A "rit." (ritardando) instruction is placed above the staff in measure 83. The melody consists of a sequence of notes with a glissando effect applied to each.

Pno. 2: Bass clef. Measures 78-84 feature a series of chords. The notation includes slurs over the chords. A dynamic marking of *mp* (mezzo-piano) is present in measure 84. The chords are sustained throughout the measures.

83 $\text{♩} = 68$

Pno. 1

p *mp*

Pno. 2

leg. *

86

Pno. 1

mp

Pno. 2

mf

89

Pno. 1

mf

3

3

3

3

3

3

3

Pno. 2

89

3

3

3

3

3

3

3

92

Pno. 1

mf

3

3

3

3

3

3

Pno. 2

92

p

mf

3

3

3

3

3

3

95

Pno. 1

Pno. 2

97

Pno. 1

Pno. 2

100

Pno. 1

Pno. 2

This system contains measures 100, 101, and 102. Pno. 1 (top two staves) features a complex melodic line with many sixteenth notes, including sixteenth-note triplets and sixteenth-note sextuplets. Pno. 2 (bottom two staves) has a more melodic line with slurs and some triplet markings. The key signature has one sharp (F#).

103

Pno. 1

Pno. 2

f

This system contains measures 103, 104, and 105. Pno. 1 (top two staves) continues with intricate sixteenth-note patterns, including triplets and sextuplets. Pno. 2 (bottom two staves) features a melodic line with slurs and a triplet in the bass clef. A dynamic marking of *f* (forte) is present at the start of measure 103. The key signature has one sharp (F#).

Pno. 1

106

6

f

5

3

3

3

Pno. 2

106

3

3

3

f

3

3

3

Pno. 1

110

3

Pno. 2

110

3

3

rit. *lunga*

ff

più a lungo possibile
fino a che il suono diventa impercettibile