



Fonseca Claudionor

Arrangeur, Compositeur, Interprete, Professeur

Brésil

A propos de l'artiste

Piano soliste, accompagnateur, répéteur co, compositeur et professeur de musique dans les catégories piano, le chant et la flûte à l'Hôtel de Ville de Piano Teacher Rio Claro SP..e, le clavier et le chant à l'école de musique solaire Das Artes à Rio Claro SP.

Qualification : Estudou e formou em música pelo conservatório musical de Rio Claro, aperfeiçoeu-se e graduou-se em piano no Instituto Ametista de Saint Germais e conservatório Brasileiro de Música e especializou em piano e composição e regencia na USP(Universidade de São Paulo)

262/5000

Il a étudié et obtenu son diplôme en musique au Conservatoire de musique de Rio Claro si aperfeiçoeu et diplômé en piano à l'Institut brésilien Améthyste Saint Germais et conservatório Música et est diplômé en piano et la composition et la régence à l'USP (Université de São Paulo)

Sociétaire : ADDAF

Page artiste : https://www.free-scores.com/partitions_gratuites_claudionorfonseca.htm

A propos de la pièce



Titre : Maria Célia
Compositeur : Claudionor, Fonseca
Arrangeur : Claudionor, Fonseca
Droit d'auteur : Copyright © Fonseca Claudionor
Editeur : Claudionor, Fonseca
Style : Valse

Fonseca Claudionor sur [free-scores.com](https://www.free-scores.com)



Cette partition ne fait pas partie du domaine public. Merci de contacter l'artiste pour toute utilisation hors du cadre privé.

Interdiction de diffusion sur d'autres sites Web.

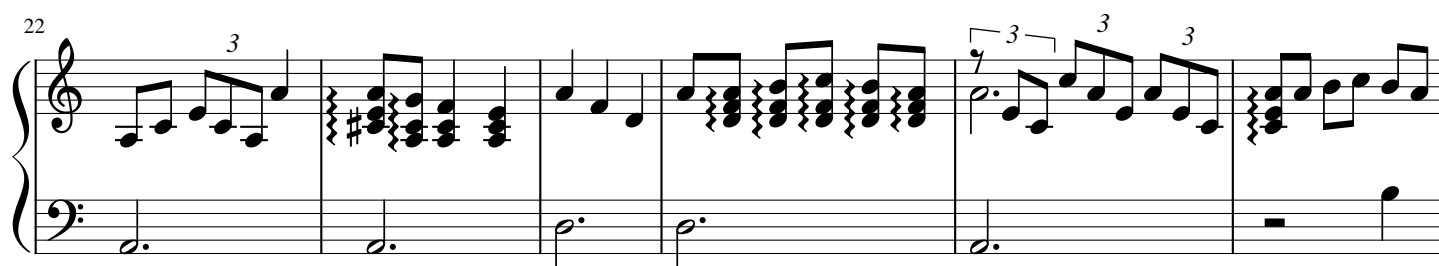
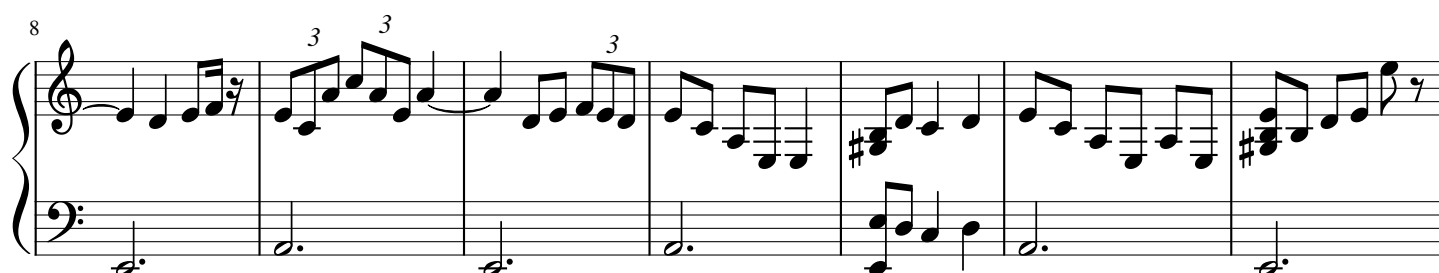


- écouter l'audio
- partager votre interprétation
- commenter la partition
- contacter l'artiste

Maria célia

Roberto de Souza Mendonça/Claudionor Fonseca

♩ = 110



36

System 1 (measures 36-42). The treble clef contains eighth and sixteenth notes with triplets, and the bass clef contains whole notes.

43

System 2 (measures 43-48). The treble clef contains eighth notes with triplets and chords, and the bass clef contains eighth notes.

49

System 3 (measures 49-51). The treble clef contains sixteenth notes with sextuplets and eighth notes with triplets, and the bass clef contains eighth notes.

52

System 4 (measures 52-55). The treble clef contains eighth notes with triplets and sixteenth notes with sextuplets, and the bass clef contains eighth notes.

56

System 5 (measures 56-59). The treble clef contains eighth notes with triplets and sixteenth notes with sextuplets, and the bass clef contains eighth notes.

60

System 6 (measures 60-65). The treble clef contains eighth notes with triplets and sixteenth notes with sextuplets, and the bass clef contains whole notes.

66

Measures 66-71 of a musical score. The treble clef staff contains six measures of music. Measures 66, 67, and 68 each begin with a triplet of eighth notes. Measure 66 has a triplet of eighth notes (G4, A4, B4) followed by a quarter note (C5). Measure 67 has a quarter note (D5), a triplet of eighth notes (E5, F5, G5), and a quarter note (A5). Measure 68 has a quarter note (B5), a triplet of eighth notes (C6, B5, A5), and a quarter note (G5). Measure 69 has a quarter note (F5), a quarter note (E5), and a quarter note (D5). Measure 70 has a quarter note (C5), a quarter note (B4), and a quarter note (A4). Measure 71 has a quarter note (G4), a quarter note (F4), and a quarter note (E4). The bass clef staff contains six measures of music. Measures 66, 67, and 68 each begin with a half note (G3). Measure 69 has a half note (F3). Measure 70 has a half note (E3). Measure 71 has a half note (D3).

72

Measures 72-74 of a musical score. The treble clef staff contains three measures of music. Measure 72 has a half note (G4), a quarter note (A4), and a quarter note (B4). Measure 73 has a half note (C5), a quarter note (D5), and a quarter note (E5). Measure 74 has a half note (F5), a quarter note (G5), and a quarter note (A5). The bass clef staff contains three measures of music. Measure 72 has a half note (G3). Measure 73 has a half note (F3). Measure 74 has a half note (E3).