



Faivre Christian

France, BISCHHEIM

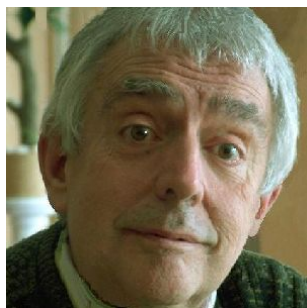
Tibetan spirit 6 (Himalaya)

A propos de l'artiste

Compositeur en tous styles

Page artiste : https://www.free-scores.com/partitions_gratuites_christian-faivre.htm

A propos de la pièce



Titre : Tibetan spirit 6 (Himalaya)
Compositeur : Christian, Faivre
Droit d'auteur : Copyright © Faivre Christian
Instrumentation : Orchestre
Style : Classique moderne

Faivre Christian sur [free-scores.com](https://www.free-scores.com)



Cette partition ne fait pas partie du domaine public. Merci de contacter l'artiste pour toute utilisation hors du cadre privé.



- écouter l'audio
- partager votre interprétation
- commenter la partition
- contacter l'artiste



Himalaya

हिमालय

Epilogue symphonique de «Tibetan Spirit »



1 Moderato assai $\text{♩} = 120$ 2 3 4 Christian Faivre

Hautbois 1-2

Bassons 1-2

Trompettes 1-2

Cors 1-2

Trombones 1-2

1 Tacet (2) *tr* 2 3 4

Timbales 1-2

p Timbale en fa

1 2 3 4

Cordes lentes

Alto

Violoncelles

Contrebasses

5 6 7 8

Hautbois 1-2

Bassons 1-2

5 6 7 8

Trompettes 1-2

Cors 1-2

Trombones 1-2

5 6 7 8

Timbales 1-2

5 6 7 8

Cordes lentes

Alto

Violoncelles

Contrebasses

9 10 11 12

Hautbois 1-2

Bassons 1-2

Trompettes 1-2

Cors 1-2

Trombones 1-2

Timbales 1-2

Cordes lentes

Alto

Violoncelles

Contrebasses

Detailed description: This page of a musical score covers measures 9 through 12. The woodwind section (Hautbois and Bassons) has active parts, while the brass (Trompettes, Cors, Trombones) and percussion (Timbales) are silent. The string section (Cordes lentes, Alto, Violoncelles, Contrebasses) provides harmonic support. The score is in a key with three flats and a common time signature. Measure numbers 9, 10, 11, and 12 are indicated above the staves.

13 14 15 16

Hautbois 1-2

Bassons 1-2

13 14 15 16

Trompettes 1-2

Cors 1-2

Trombones 1-2

13 14 15 16

Timbales 1-2

13 14 15 16

Cordes lentes

Alto

Violoncelles

Contrebasses

This musical score page covers measures 13 through 16. The woodwind section (Hautbois and Bassons) has active parts with various note values and rests. The brass section (Trompettes, Cors, Trombones) is mostly silent, indicated by rests. The percussion section (Timbales) also has rests. The string section (Cordes lentes, Alto, Violoncelles, Contrebasses) provides harmonic support with sustained notes and rests. The score is written in a key signature of two flats and a common time signature.

17 18 19 20

Hautbois 1-2

Bassons 1-2

17 18 19 20

Trompettes 1-2

Cors 1-2

Trombones 1-2

17 18 19 20

Timbales 1-2

17 18 19 20

Cordes lentes

Alto

Violoncelles

Contrebasses

Detailed description: This page of a musical score covers measures 17 through 20. The woodwind section (Hautbois and Bassons) has active parts in measures 17 and 18, with some notes in measure 19. The brass section (Trompettes, Cors, Trombones) and percussion (Timbales) are silent throughout. The string section (Cordes lentes, Alto, Violoncelles, Contrebasses) has active parts in measures 17 and 18, with some notes in measure 19. The score is written in a key signature of three flats and a common time signature.

21 22 23 24

Hautbois 1-2

Bassons 1-2

21 22 23 24

Trompettes 1-2

Cors 1-2

Trombones 1-2

21 22 23 24

Timbales 1-2

21 22 23 24 *Molto espressivo*

Cordes lentes

Alto

Violoncelles

Contrebasses

Detailed description of the musical score: The score is for measures 21 to 24. The key signature has two flats (B-flat and E-flat), and the time signature is 4/4. The woodwind section (Hautbois and Bassons) plays a melodic line starting in measure 21, with a fermata over the final note in measure 24. The brass section (Trompettes, Cors, and Trombones) provides harmonic support with sustained notes and rests. The percussion section (Timbales) has rests throughout. The string section (Cordes lentes, Alto, Violoncelles, and Contrebasses) plays a complex accompaniment, with the cellos and double basses featuring a prominent melodic line in measure 24 marked 'Molto espressivo'.

25 26 27 28

Hautbois 1-2

Bassons 1-2

25 26 27 28

Trompettes 1-2

Cors 1-2

Trombones 1-2

25 26 27 *tr* 28

Timbales 1-2

25 26 27 *f* 28

Cordes lentes

Alto

Violoncelles

Contrebasses

Detailed description of the musical score: The score is for measures 25 to 28. The woodwinds (Hautbois and Bassons) play a melodic line starting in measure 25. The brass section (Trompettes, Cors, and Trombones) has rests until measure 27, where they enter with a sustained chord. The Timbales have rests until measure 27, where they play a single note marked with a forte (f) dynamic. The strings (Cordes lentes) are divided into Alto, Violoncelles, and Contrebasses. The Alto and Violoncelles parts have a crescendo leading to a mezzo-piano (mp) dynamic in measure 27. The Contrebasses part also has a crescendo leading to a mezzo-piano (mp) dynamic in measure 27. The score is in a key signature of three flats and a common time signature.

29 30 31 32

Hautbois 1-2

Bassons 1-2

29 30 31 32

Trompettes 1-2

Cors 1-2

Trombones 1-2

29 30 31 32

Timbales 1-2

29 30 31 32

Cordes lentes

Alto

Violoncelles

Contrebasses

This musical score page covers measures 29 to 32. The woodwind section (Hautbois and Bassons) has a melodic line starting in measure 30. The brass section (Trompettes, Cors, Trombones) is mostly silent with rests. The percussion section (Timbales) is also silent. The string section (Cordes lentes, Alto, Violoncelles, Contrebasses) provides harmonic support with sustained notes and some movement in the lower registers.

33 34 35 36

Hautbois 1-2

Bassons 1-2

33 34 35 36

Trompettes 1-2

Cors 1-2

Trombones 1-2

33 34 35 36

Timbales 1-2

33 34 35 36

Cordes lentes

Alto

Violoncelles

Contrebasses

Detailed description of the musical score: The score is for measures 33 to 36. The key signature has three flats (B-flat, E-flat, A-flat). The woodwind section (Hautbois and Bassons) has a melodic line starting in measure 33, with a key signature change to two flats (B-flat, E-flat) in measure 34. The brass section (Trompettes, Cors, Trombones) and timbales are silent throughout. The string section (Cordes lentes, Alto, Violoncelles, Contrebasses) provides harmonic support, with the cellos and double basses playing a steady bass line and the violins playing a melodic line.

37 38 39 40

Hautbois 1-2

Bassons 1-2

Trompettes 1-2

Cors 1-2

Trombones 1-2

Timbales 1-2

Cordes lentes

Alto

Violoncelles

Contrebasses

Detailed description: This page of a musical score covers measures 37 to 40. The woodwind section (Hautbois and Bassons) has active parts, with the bassoon playing a melodic line and the oboe providing harmonic support. The brass section (Trompettes, Cors, Trombones) is mostly silent, indicated by rests. The percussion section (Timbales) also has rests. The string section (Cordes lentes, Alto, Violoncelles, Contrebasses) provides a steady accompaniment with various rhythmic patterns and sustained notes. The score is written in a key signature of three flats and a common time signature.

41 42 43 44

Hautbois 1-2

Bassons 1-2

41 42 43 44

Trompettes 1-2

Cors 1-2

Trombones 1-2

41 42 43 44

Timbales 1-2

41 42 43 44

Cordes lentes

Alto

Violoncelles

Contrebasses

Detailed description of the musical score: The score is for measures 41 to 44. The key signature has two flats (B-flat and E-flat), and the time signature is 4/4. The woodwind section (Hautbois and Bassons) plays a melodic line in measure 41, which continues through measure 44. The brass section (Trompettes, Cors, and Trombones) and percussion (Timbales) are silent throughout. The strings (Cordes lentes) play a rhythmic accompaniment, with the first violin part featuring a melodic line in measure 41. The lower strings (Alto, Violoncelles, and Contrebasses) play a steady bass line.

45 46 47 48

Hautbois 1-2

Bassons 1-2

45 46 47 48

Trompettes 1-2

Cors 1-2

Trombones 1-2

45 46 47 48

Timbales 1-2

45 46 47 48

Cordes lentes

Alto

Violoncelles

Contrebasses

This musical score page covers measures 45 to 48. The woodwind section (Hautbois and Bassons) has active parts, while the brass section (Trompettes, Cors, Trombones) and timbales are silent. The string section (Cordes lentes, Alto, Violoncelles, Contrebasses) has active parts. The score is written in a key signature of three flats and a common time signature.

49 50 51 52

Hautbois 1-2

Bassons 1-2

49 50 51 52

Trompettes 1-2

Cors 1-2

Trombones 1-2

49 50 51 52

Timbales 1-2

49 50 51 52

Cordes lentes

Alto

Violoncelles

Contrebasses

This musical score page covers measures 49 to 52. The instruments are arranged in the following order from top to bottom: Hautbois 1-2 (oboes), Bassons 1-2 (bassoons), Trompettes 1-2 (trumpets), Cors 1-2 (horns), Trombones 1-2 (trombones), Timbales 1-2 (timpani), Cordes lentes (slow strings), Alto (viola), Violoncelles (cellos), and Contrebasses (double basses). The woodwinds and strings have active parts, while the brass and timpani are mostly silent. The score includes various musical notations such as notes, rests, and dynamic markings.

53 54 55 56

Hautbois 1-2

Bassons 1-2

53 54 55 56

Trompettes 1-2

Cors 1-2

Trombones 1-2

53 54 55 56

Timbales 1-2

53 54 55 56

Cordes lentes

Alto

Violoncelles

Contrebasses

This musical score page covers measures 53 to 56. The instruments are arranged as follows: Hautbois 1-2 and Bassons 1-2 (top two staves); Trompettes 1-2, Cors 1-2, and Trombones 1-2 (middle three staves); Timbales 1-2 (single staff); Cordes lentes (string quartet, four staves); Alto (single staff); Violoncelles (single staff); and Contrebasses (single staff). The woodwinds and strings have active parts, while the brass and timbales are silent. The score is in a key with three flats and a common time signature.

57 58 59 60

Hautbois 1-2

Bassons 1-2

57 58 59 60

Trompettes 1-2

Cors 1-2

Trombones 1-2

57 58 59 60

Timbales 1-2

57 58 59 60

Cordes lentes

Alto

Violoncelles

Contrebasses

Detailed description: This page of a musical score covers measures 57 to 60. The woodwind section (Hautbois and Bassons) has active parts, while the brass section (Trompettes, Cors, Trombones) is silent. The percussion section (Timbales) is also silent. The string section (Cordes lentes) includes parts for Alto, Violoncelles, and Contrebasses. The Alto part is silent, while the Violoncelles and Contrebasses play a simple accompaniment. The woodwinds play a melodic line with some syncopation and rests.

61 62 63 64

Hautbois 1-2

Bassons 1-2

61 62 63 64

Trompettes 1-2

Cors 1-2

Trombones 1-2

61 62 63 64

Timbales 1-2

61 62 63 64

Cordes lentes

Alto

Violoncelles

Contrebasses

The image shows a page of a musical score for measures 61 to 64. The score is arranged in a standard orchestral layout. At the top, measures 61, 62, 63, and 64 are indicated. The instruments are listed on the left: Hautbois 1-2, Bassons 1-2, Trompettes 1-2, Cors 1-2, Trombones 1-2, Timbales 1-2, Cordes lentes (with five staves), Alto, Violoncelles, and Contrebasses. The woodwind and string parts have musical notation, including notes, rests, and dynamics. The brass and percussion parts are mostly silent, indicated by horizontal lines with dashes. The score is in a key signature of three flats and a common time signature.

65 66 67 68

Hautbois 1-2

Bassons 1-2

65 66 67 68

Trompettes 1-2

Cors 1-2

Trombones 1-2

65 66 67 68

Timbales 1-2

65 66 67 68

Cordes lentes

Alto

Violoncelles

Contrebasses

This musical score page covers measures 65 to 68. The woodwind section (Hautbois and Bassons) has active parts, while the brass section (Trompettes, Cors, Trombones) and Timbales are silent. The string section (Cordes lentes, Alto, Violoncelles, Contrebasses) has active parts. The score is written in a key signature of three flats and a common time signature.

69 70 71 72

Hautbois 1-2

Bassons 1-2

69 70 71 72

Trompettes 1-2

Cors 1-2

Trombones 1-2

69 70 71 72

Timbales 1-2

69 70 71 72

Cordes lentes

Alto

Violoncelles

Contrebasses

The image shows a page of a musical score for measures 69 through 72. The score is arranged in a standard orchestral layout. At the top, the measures are numbered 69, 70, 71, and 72. The instruments are listed on the left side of the page: Hautbois 1-2, Bassons 1-2, Trompettes 1-2, Cors 1-2, Trombones 1-2, Timbales 1-2, Cordes lentes (which includes Alto, Violoncelles, and Contrebasses), Alto, Violoncelles, and Contrebasses. The woodwind parts (Hautbois and Bassons) have active notation, while the brass and percussion parts are mostly silent, indicated by rests. The string parts (Cordes lentes) have some active notation, particularly in the first and last measures of the page.

73 74 75 76

Hautbois 1-2

Bassons 1-2

73 74 75 76

Trompettes 1-2

Cors 1-2

Trombones 1-2

73 74 75 76

Timbales 1-2

73 74 75 76

Cordes lentes

Alto

Violoncelles

Contrebasses

Detailed description of the musical score: The score is for measures 73 to 76. The woodwinds (Hautbois and Bassons) play a melodic line starting in measure 73, with a key signature of two flats. The brass section (Trompettes, Cors, Trombones) and percussion (Timbales) are silent throughout. The strings (Cordes lentes, Alto, Violoncelles, Contrebasses) provide harmonic support with sustained notes and some melodic movement in the upper strings.

77 78 79 80

Hautbois 1-2

Bassons 1-2

Trompettes 1-2

Cors 1-2

Trombones 1-2

77 78 79 80

Timbales 1-2

77 78 79 80

Cordes lentes

Alto

Violoncelles

Contrebasses

This musical score page covers measures 77 to 80. The woodwind section (Hautbois and Bassons) has active parts with various notes and rests. The brass section (Trompettes, Cors, Trombones) is mostly silent, indicated by horizontal lines. The percussion section (Timbales) is also silent. The string section (Cordes lentes, Alto, Violoncelles, Contrebasses) has active parts, with the cellos and double basses playing a melodic line and the violins playing a more rhythmic accompaniment. The score is written in a key signature of three flats and a common time signature.

81 82 83 84

Hautbois 1-2

Bassons 1-2

81 82 83 84

Trompettes 1-2

Cors 1-2

Trombones 1-2

81 82 83 84

Timbales 1-2

81 82 83 84

Cordes lentes

Alto

Violoncelles

Contrebasses

This musical score page covers measures 81 to 84. The woodwind section (Hautbois and Bassons) has active parts, while the brass section (Trompettes, Cors, Trombones) and timbales are silent. The string section (Cordes lentes, Alto, Violoncelles, Contrebasses) provides harmonic support. The score is in a key with three flats and a common time signature.

85 *Da Capo Al Fine* 86 87 88

Hautbois 1-2

Bassons 1-2

Musical notation for Hautbois 1-2 and Bassons 1-2. The Hautbois part is in the treble clef and the Bassons part is in the bass clef. Both parts play a melodic line with some rests. Measure 85 starts with a half note, followed by quarter notes and eighth notes. Measure 86 continues the melody with a half note and quarter notes. Measure 87 features a half note followed by quarter notes. Measure 88 has a half note followed by a quarter note.

85 86 87 88

Trompettes 1-2

Cors 1-2

Trombones 1-2

Musical notation for Trompettes 1-2, Cors 1-2, and Trombones 1-2. All three parts are in the bass clef and contain only rests throughout measures 85-88.

85 86 87 88

Timbales 1-2

Musical notation for Timbales 1-2. The part is in the bass clef and contains only rests throughout measures 85-88.

85 86 87 88

Cordes lentes

Alto

Violoncelles

Contrebasses

Musical notation for Cordes lentes, Alto, Violoncelles, and Contrebasses. The Cordes lentes part is in the treble clef and features a melodic line with a long slur. The Alto part is in the alto clef and contains rests. The Violoncelles and Contrebasses parts are in the bass clef and play a melodic line with a long slur. Measure 85 starts with a half note, followed by quarter notes and eighth notes. Measure 86 continues the melody with a half note and quarter notes. Measure 87 features a half note followed by quarter notes. Measure 88 has a half note followed by a quarter note.

89 90 91 92

Hautbois 1-2

Bassons 1-2

89 90 91 92

Trompettes 1-2

Cors 1-2

Trombones 1-2

89 90 91 92

Timbales 1-2

89 90 91 92

Cordes lentes

Alto

Violoncelles

Contrebasses

This musical score page covers measures 89 to 92. The woodwind section (Hautbois and Bassons) has active parts, while the brass section (Trompettes, Cors, Trombones) and Timbales are silent. The string section (Cordes lentes, Alto, Violoncelles, Contrebasses) has active parts. The score is written in a key signature of three flats and a common time signature.

93 94 95 96

Hautbois 1-2

Bassons 1-2

93 94 95 96

Trompettes 1-2

Cors 1-2

Trombones 1-2

93 94 95 96

Timbales 1-2

93 94 95 96

Cordes lentes

Alto

Violoncelles

Contrebasses

This musical score page covers measures 93 to 96. The woodwind section (Hautbois and Bassons) has active parts in measures 93 and 96. The brass section (Trompettes, Cors, Trombones) and percussion (Timbales) are silent throughout. The string section (Cordes lentes) includes parts for Alto, Violoncelles, and Contrebasses, with some activity in measures 93 and 94. The score is written in a key signature of three flats and a common time signature.

97 98 99 100

Hautbois 1-2

Bassons 1-2

97 98 99 100

Trompettes 1-2

Cors 1-2

Trombones 1-2

97 98 99 100

Timbales 1-2

97 98 99 100

Cordes lentes

Alto

Violoncelles

Contrebasses

101 102 103 104

Hautbois 1-2

Bassons 1-2

101 102 103 104

Trompettes 1-2

Cors 1-2

Trombones 1-2

101 102 103 104

Timbales 1-2

101 102 103 104

Cordes lentes

Alto

Violoncelles

Contrebasses

Detailed description of the musical score: The score is for measures 101 to 104. The key signature has three flats (B-flat, E-flat, A-flat). The woodwinds (Hautbois and Bassons) play a melodic line starting in measure 101 with a half note G4, followed by a quarter note A4 with a sharp sign, and a half note B4. The brass (Trompettes, Cors, Trombones) and timbales are silent, indicated by a horizontal line with a bar. The strings (Cordes lentes) are divided into five parts: Violoncelles and Contrebasses play a similar melodic line to the woodwinds, while the other three parts (two Trebles and one Bass) are silent. The Alto part is also silent.

105 Coda 106 107 108

Hautbois 1-2

Bassons 1-2

105 106 107 108

Trompettes 1-2

Cors 1-2

Trombones 1-2

105 106 107 108

Timbales 1-2

105 106 107 108

Cordes lentes

Alto

Violoncelles

Contrebasses

109 110 111 112 *Fine*

Hautbois 1-2

Bassons 1-2

Trompettes 1-2

Cors 1-2

Trombones 1-2

Timbales 1-2

109 110 111 112

109 110 111 112

Cordes lentes

Alto

Violoncelles

Contrebasses