



Faivre Christian

France, BISCHHEIM

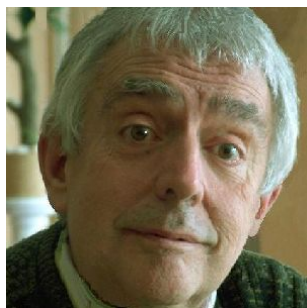
Magellan 1

A propos de l'artiste

Compositeur en tous styles

Page artiste : https://www.free-scores.com/partitions_gratuites_christian-faivre.htm

A propos de la pièce



Titre : Magellan 1
Compositeur : Christian, Faivre
Droit d'auteur : Copyright © Faivre Christian
Instrumentation : Orchestre
Style : Classique moderne

Faivre Christian sur [free-scores.com](https://www.free-scores.com)



Cette partition ne fait pas partie du domaine public. Merci de contacter l'artiste pour toute utilisation hors du cadre privé.



- écouter l'audio
- partager votre interprétation
- commenter la partition
- contacter l'artiste



Magellan

Premier tour du Monde 1519-1522

Poème symphonique

Première partie : La Mer Océane



Christian Faivre

1 1 - Le départ $\text{♩} = 120$ 2 3 4

Flûtes 1-2

Hautbois 1-2

Clarinettes 1-2

Bassons 1-2

Trompettes 1-2

Cors 1-2

Trombones 1-2

Timbales 1-2

Violons 1-2

Alto

Violoncelles

Contrebasses

Cor naturel

5 6 7 8

Flûtes 1-2

Hautbois 1-2

Clarinettes 1-2

Bassons 1-2

5 6 7 8

Trompettes 1-2

Cors 1-2

Trombones 1-2

5 6 7 8

Timbales 1-2

5 6 7 8

Violons 1-2

Alto

Violoncelles

Contrebasses

9 10  2 - Par bon vent 11 12

Flûtes 1-2

Hautbois 1-2

Clarinettes 1-2

Bassons 1-2

Trompettes 1-2

Cors 1-2

Trombones 1-2

Timbales 1-2

Violons 1-2

Alto

Violoncelles

Contrebasses

13 14 15 16

Flûtes 1-2

Hautbois 1-2

Clarinettes 1-2

Bassons 1-2

13 14 15 16

Trompettes 1-2

Cors 1-2

Trombones 1-2

13 14 15 16

Timbales 1-2

13 14 15 16

Violons 1-2

Alto

Violoncelles

Contrebasses

Detailed description of the musical score: The score is arranged in systems. The first system includes Flûtes 1-2, Hautbois 1-2, Clarinettes 1-2, and Bassons 1-2. The second system includes Trompettes 1-2, Cors 1-2, and Trombones 1-2. The third system includes Timbales 1-2. The fourth system includes Violons 1-2, Alto, Violoncelles, and Contrebasses. Measures 13-14 show woodwinds and strings with various rhythmic patterns. Measure 15 features a forte (f) dynamic marking for the strings. Measure 16 continues the string patterns. The Alto part is mostly silent with rests.

17 18 19 20

Flûtes 1-2

Hautbois 1-2

Clarinettes 1-2

Bassons 1-2

17 18 19 20

Trompettes 1-2

Cors 1-2

Trombones 1-2

17 18 19 20

Timbales 1-2

17 18 19 20 1.

Violons 1-2

Alto

Violoncelles

Contrebasses

21 22 Rallentando ♩ = 100 23 24

Flûtes 1-2

Hautbois 1-2

Clarinettes 1-2

Bassons 1-2

Trompettes 1-2

Cors 1-2

Trombones 1-2

Timbales 1-2

Violons 1-2

Alto

Violoncelles

Contrebasses

Detailed description of the musical score: The score is divided into four systems. The first system (measures 21-24) includes Flutes 1-2, Oboes 1-2, Clarinets 1-2, Bassoons 1-2, Trumpets 1-2, Horns 1-2, Trombones 1-2, and Timpani 1-2. All these parts are marked with a rest (indicated by a horizontal line with a vertical tick) for the entire duration. The second system (measures 21-24) includes Violins 1-2, Alto, Cellos, and Double Basses. Measures 21 and 24 contain whole notes for all string parts. Measures 22 and 23 contain eighth notes for all string parts. A 'Rallentando' marking is placed above measure 22, and a tempo of 100 (♩ = 100) is indicated. A first ending bracket is shown above measure 21.

25 26 27 28

Flûtes 1-2

Hautbois 1-2

Clarinettes 1-2

Bassons 1-2

25 26 27 28

Trompettes 1-2

Cors 1-2

Trombones 1-2

25 26 27 28

Timbales 1-2

25 26 27 28

Violons 1-2

Alto

Violoncelles

Contrebasses

Detailed description of the musical score: The score is arranged in three systems. The first system includes Flûtes 1-2 (treble clef), Hautbois 1-2 (treble clef), Clarinettes 1-2 (bass clef), and Bassons 1-2 (bass clef). The second system includes Trompettes 1-2 (treble clef), Cors 1-2 (bass clef), and Trombones 1-2 (bass clef). The third system includes Timbales 1-2 (bass clef), Violons 1-2 (treble clef), Alto (alto clef), Violoncelles (bass clef), and Contrebasses (bass clef). Measures 25-28 are indicated above each system. The Flûtes part has notes in measures 25-27 and a whole note in measure 28. The Bassons part has notes in measures 25-27 and a whole note in measure 28. The Violons 1-2 part has a melodic line starting in measure 25. All other parts have rests.

29 30 31 32

Flûtes 1-2

Hautbois 1-2

Clarinettes 1-2

Bassons 1-2

29 30 31 32

Trompettes 1-2

Cors 1-2

Trombones 1-2

29 30 31 32

Timbales 1-2

29 30 31 32

Violons 1-2

Alto

Violoncelles

Contrebasses


The image displays a musical score for measures 29 through 32. The score is organized into four systems. The first system includes Flûtes 1-2, Hautbois 1-2, Clarinettes 1-2, and Bassons 1-2. The second system includes Trompettes 1-2, Cors 1-2, and Trombones 1-2. The third system includes Timbales 1-2. The fourth system includes Violons 1-2, Alto, Violoncelles, and Contrebasses. The woodwind and brass parts are mostly silent, indicated by rests. The Hautbois part has some activity in measure 29. The string section (Violons, Alto, Violoncelles, and Contrebasses) has a melodic line in measure 29 that continues through measure 31, with some changes in measure 32. The percussion part (Timbales) is also mostly silent.

33

34

35

36

Dal Segno  1x

Flûtes 1-2

Hautbois 1-2

Clarinettes 1-2

Bassons 1-2

33

34

35

36

Trompettes 1-2

Cors 1-2

Trombones 1-2

33

34

35

36

Timbales 1-2

33

34

35 Reprise ♩ = 80

36

Violons 1-2

Alto

Violoncelles

Contrebasses

37 3 - Calme plat ♩ = 80 38 39 40

Flûtes 1-2

Hautbois 1-2

Clarinettes 1-2

Bassons 1-2

37 38 39 40

Trompettes 1-2

Cors 1-2

Trombones 1-2

37 38 39 40

Timbales 1-2

37 38 Adagio ♩ = 68 39 40 *f*

Violons 1-2

Alto

Violoncelles

Contrebasses

	41	42	43	44
Flûtes 1-2	■	■	■	■
Hautbois 1-2	■	■	■	■
Clarinettes 1-2	■	■	■	■
Bassons 1-2	■	■	■	■
Trompettes 1-2	■	■	■	■
Cors 1-2	■	■	■	■
Trombones 1-2	■	■	■	■
Timbales 1-2	■	■	■	■
Violons 1-2				
Alto	■	■	■	■
Violoncelles	■	■	■	■
Contrebasses	■	■	■	■

45 46 47 48 **1.**

Flûtes 1-2

Hautbois 1-2

Clarinettes 1-2

Bassons 1-2

Trompettes 1-2

Cors 1-2

Trombones 1-2

Timbales 1-2

45 46 47 *f* 48

Violons 1-2

Alto

Violoncelles

Contrebasses

49 2

50

51

52

Flûtes 1-2

Hautbois 1-2

Clarinettes 1-2

Bassons 1-2

49

50

51

52

Trompettes 1-2

Cors 1-2

Trombones 1-2

49

50

51

52

Timbales 1-2

49

50

51

52

Violons 1-2

Alto

Violoncelles

Contrebasses

	53	54	55	56
Flûtes 1-2	■	■	■	■
Hautbois 1-2	■	■	■	■
Clarinettes 1-2	■	■	■	■
Bassons 1-2	■	■	■	■
Trompettes 1-2	■	■	■	■
Cors 1-2	■	■	■	■
Trombones 1-2	■	■	■	■
Timbales 1-2	■	■	■	■
Violons 1-2	♪	♩	♪	♩
Alto	■	■	■	■
Violoncelles	■	■	■	■
Contrebasses	■	■	■	■

57 58 59 60

Flûtes 1-2

Hautbois 1-2

Clarinettes 1-2

Bassons 1-2

57 58 59 60

Trompettes 1-2

Cors 1-2

Trombones 1-2

57 58 59 60

Timbales 1-2

57 58 59 60

Violons 1-2

Alto

Violoncelles

Contrebasses

Detailed description of the musical score: The score is divided into four systems. The first system includes Flûtes 1-2, Hautbois 1-2, Clarinettes 1-2, and Bassons 1-2. The second system includes Trompettes 1-2, Cors 1-2, and Trombones 1-2. The third system includes Timbales 1-2. The fourth system includes Violons 1-2 (with a brace), Alto, Violoncelles, and Contrebasses. Measures 57 and 58 are mostly empty for all instruments, with only a few notes in the Violons 1-2 part. Measure 59 shows a melodic line for Violons 1-2 and a chord for Alto. Measure 60 shows a melodic line for Violons 1-2 and chords for Alto and Violoncelles. All other instruments have rests throughout the measures.

61 62 63 64

Flûtes 1-2

Hautbois 1-2

Clarinettes 1-2

Bassons 1-2

61 62 63 64

Trompettes 1-2

Cors 1-2

Trombones 1-2

61 62 63 64

Timbales 1-2

61 62 63 64

Violons 1-2

Alto

Violoncelles

Contrebasses

The image shows a page of a musical score for measures 61 through 64. The score is organized into four systems. The first system includes Flûtes 1-2, Hautbois 1-2, Clarinettes 1-2, and Bassons 1-2. The second system includes Trompettes 1-2, Cors 1-2, and Trombones 1-2. The third system includes Timbales 1-2. The fourth system includes Violons 1-2, Alto, Violoncelles, and Contrebasses. Measures 61, 62, 63, and 64 are marked at the top of each system. The woodwind and brass parts are mostly silent, indicated by a horizontal line with a small tick mark. The string parts (Violons 1-2, Alto, Violoncelles, and Contrebasses) have musical notation in measures 61, 62, and 63, with measure 64 being silent. The Violons 1-2 part features a melodic line with a slur over measures 62 and 63. The Alto part has a single note in measure 61. The Violoncelles and Contrebasses parts have a single note in measure 61.

Flûtes 1-2

Hautbois 1-2

Clarinettes 1-2

Bassons 1-2

65 66 67 68

Trompettes 1-2

Cors 1-2

Trombones 1-2

65 66 67 68

Timbales 1-2

Timbale en fa

65 66 67 68

Violons 1-2

Alto

Violoncelles

Contrebasses

69 70 71 72

Flûtes 1-2

Hautbois 1-2

Clarinettes 1-2

Bassons 1-2

69 70 71 72

Trompettes 1-2

Cors 1-2

Trombones 1-2

69 70 71 72 *tr*

Timbales 1-2

69 70 71 72

Violons 1-2

Alto

Violoncelles

Contrebasses

Detailed description of the musical score: The score is arranged in four systems. The first system includes Flutes 1-2, Oboes 1-2, Clarinets 1-2, and Bassoons 1-2, all with rests. The second system includes Trumpets 1-2, Horns 1-2, and Trombones 1-2; the Trumpets and Trombones have a half note on G4 in measure 71. The third system includes Timpani 1-2, with a roll in measure 72. The fourth system includes Violins 1-2, Alto, Violoncelles, and Contrabasses; the Violins play a half note on G4 in measure 69, the Violoncelles play a half note on G2 in measure 70, and the Contrabasses play a half note on G1 in measure 72.

73 74 75 76

Flûtes 1-2

Hautbois 1-2

Clarinettes 1-2

Bassons 1-2

73 74 75 76

Trompettes 1-2

Cors 1-2

Trombones 1-2

73 74 75 76

Timbales 1-2

73 74 75 76

Violons 1-2

Alto

Violoncelles

Contrebasses

Detailed description of the musical score: The score is arranged in four systems. The first system includes Flûtes 1-2, Hautbois 1-2, Clarinettes 1-2, and Bassons 1-2. The second system includes Trompettes 1-2, Cors 1-2, and Trombones 1-2. The third system includes Timbales 1-2. The fourth system includes Violons 1-2 (two staves), Alto, Violoncelles, and Contrebasses. Measures 73 and 75 are mostly silent for all instruments. Measure 74 shows a single note in the Basson staff. Measure 76 features a half note in the Basson staff, a half note in the Trompettes and Trombones staves, and a half note in the Violoncelles staff. The Violons 1-2 staff shows a half note in measure 73 and measure 76.

77 78 79 80

Flûtes 1-2

Hautbois 1-2

Clarinettes 1-2

Bassons 1-2

77 78 79 80

Trompettes 1-2

Cors 1-2

Trombones 1-2

77 78 79 80

Timbales 1-2

77 78 79 80

Violons 1-2

Alto

Violoncelles

Contrebasses

81 82 83 84

Flûtes 1-2

Hautbois 1-2

Clarinettes 1-2

Bassons 1-2

81 82 83 84

Trompettes 1-2

Cors 1-2

Trombones 1-2

81 82 83 84

Timbales 1-2

81 82 83 84

Violons 1-2

Alto

Violoncelles

Contrebasses

Detailed description of the musical score: The score is divided into four systems. The first system includes Flûtes 1-2, Hautbois 1-2, Clarinettes 1-2, and Bassons 1-2. The second system includes Trompettes 1-2, Cors 1-2, and Trombones 1-2. The third system includes Timbales 1-2. The fourth system includes Violons 1-2, Alto, Violoncelles, and Contrebasses. Measures 81 and 82 are mostly rests for all instruments. In measure 83, the Hautbois 1-2 plays a half note G4, the Cors 1-2 play a half note G3, and the Timbales 1-2 play a half note G2. In measure 84, the Hautbois 1-2 plays a half note G4, the Cors 1-2 play a half note G3, and the Timbales 1-2 play a half note G2. The Violons 1-2 have a melodic line starting in measure 81, moving from C4 to D4, E4, F4, G4, and then playing a chord of G4, B4, D5 in measure 83. The other string instruments (Alto, Violoncelles, Contrebasses) play rests throughout.

85 86 87 88

Flûtes 1-2

Hautbois 1-2

Clarinettes 1-2

Bassons 1-2

85 86 87 88

Trompettes 1-2

Cors 1-2

Trombones 1-2

85 *tr* 86 87 88

Timbales 1-2

85 86 87 88

Violons 1-2

Alto

Violoncelles

Contrebasses

	89	90	91	92
Flûtes 1-2				
Hautbois 1-2				
Clarinettes 1-2				
Bassons 1-2				
Trompettes 1-2				
Cors 1-2				
Trombones 1-2				
Timbales 1-2	<i>tr</i>		<i>tr</i>	
Violons 1-2				
Alto				
Violoncelles				
Contrebasses				

	93	94	95	96
Flûtes 1-2	[Musical staff with rests]			
Hautbois 1-2	[Musical staff with rests]			
Clarinettes 1-2	[Musical staff with rests]			
Bassons 1-2	[Musical staff with rests]			
<hr/>				
	93	94	95	96
Trompettes 1-2	[Musical staff with notes and rests]			
Cors 1-2	[Musical staff with notes and rests]			
Trombones 1-2	[Musical staff with notes and rests]			
<hr/>				
	93	94	95	96
Timbales 1-2	[Musical staff with notes and rests]			
<hr/>				
	93	94	95	96
Violons 1-2	[Musical staff with notes and rests]			
Alto	[Musical staff with notes and rests]			
Violoncelles	[Musical staff with notes and rests]			
Contrebasses	[Musical staff with notes and rests]			

97 98 99 100

Flûtes 1-2

Hautbois 1-2

Clarinettes 1-2

Bassons 1-2

97 98 99 100

Trompettes 1-2

Cors 1-2

Trombones 1-2

97 98 99 100

Timbales 1-2

97 98 99 100

Violons 1-2

Alto

Violoncelles

Contrebasses

Detailed description: This is a page of a musical score for measures 97 to 100. The score is arranged in systems. The first system includes Flûtes 1-2, Hautbois 1-2, Clarinettes 1-2, and Bassons 1-2. The second system includes Trompettes 1-2, Cors 1-2, and Trombones 1-2. The third system includes Timbales 1-2. The fourth system includes Violons 1-2, Alto, Violoncelles, and Contrebasses. The woodwind and brass parts have mostly rests, with some notes in measures 98 and 100. The timbales part features a rhythmic pattern with trills. The string parts are mostly rests, with some notes in measures 97 and 98.

101 102 103 104

Flûtes 1-2

Hautbois 1-2

Clarinettes 1-2

Bassons 1-2

101 102 103 104

Trompettes 1-2

Cors 1-2

Trombones 1-2

101 102 103 104

Timbales 1-2

101 102 103 104

Violons 1-2

Alto

Violoncelles

Contrebasses

Detailed description of the musical score: The score is divided into four systems. The first system (measures 101-104) includes Flutes 1-2, Oboes 1-2, Clarinets 1-2, and Bassoons 1-2, all with rests. The second system includes Trumpets 1-2 (rests), Horns 1-2 (B-flat notes), and Trombones 1-2 (B-flat notes). The third system features Timbales 1-2 with a rhythmic pattern of eighth notes and rests, marked with 'tr' (trill) and 'tr~' (trill with grace notes). The fourth system includes Violins 1-2 (melodic line), Alto (B-flat notes), Violoncelles (B-flat notes), and Contrebasses (B-flat notes). A large brace is positioned below the string staves.

105 106 107 108

Flûtes 1-2

Hautbois 1-2

Clarinettes 1-2

Bassons 1-2

105 106 107 108

Trompettes 1-2

Cors 1-2

Trombones 1-2

105 106 107 108

Timbales 1-2

105 106 107 Rallentando ♩ = 68 108

Violons 1-2

Alto

Violoncelles

Contrebasses

109 110 111 112

Flûtes 1-2

Hautbois 1-2

Clarinettes 1-2

Bassons 1-2

109 110 111 112

Trompettes 1-2

Cors 1-2

Trombones 1-2

109 110 111 112

Timbales 1-2

109 Andantino ♩ = 80 110 111 112

Violons 1-2

Alto

Violoncelles

Contrebasses

Detailed description of the musical score: The score is arranged in systems. The first system includes Flûtes 1-2 (treble clef), Hautbois 1-2 (treble clef), Clarinettes 1-2 (bass clef), and Bassons 1-2 (bass clef). The second system includes Trompettes 1-2 (treble clef), Cors 1-2 (bass clef), and Trombones 1-2 (bass clef). The third system includes Timbales 1-2 (bass clef). The fourth system includes Violons 1-2 (treble clef), Alto (alto clef), Violoncelles (bass clef), and Contrebasses (bass clef). Measures 109-112 are marked. The Flûtes part has notes in measures 109-111 and a whole note in 112. The Bassons part has notes in measures 109-111 and a quarter note in 112. The Violons part has a melodic line starting in measure 109. The other instruments have rests.

113 114 115 116

Flûtes 1-2

Hautbois 1-2

Clarinettes 1-2

Bassons 1-2

113 114 115 116

Trompettes 1-2

Cors 1-2

Trombones 1-2

113 114 115 116

Timbales 1-2

113 114 115 116

Violons 1-2

Alto

Violoncelles

Contrebasses

Detailed description of the musical score: The score is divided into four systems. The first system includes Flûtes 1-2 (treble clef, mostly rests), Hautbois 1-2 (treble clef, melodic line starting in measure 113), Clarinettes 1-2 (bass clef, mostly rests), and Bassons 1-2 (bass clef, melodic line starting in measure 113). The second system includes Trompettes 1-2 (treble clef, mostly rests), Cors 1-2 (bass clef, mostly rests), and Trombones 1-2 (bass clef, mostly rests). The third system includes Timbales 1-2 (bass clef, mostly rests). The fourth system includes Violons 1-2 (treble clef, melodic line starting in measure 113), Alto (alto clef, melodic line starting in measure 114), Violoncelles (bass clef, mostly rests), and Contrebasses (bass clef, mostly rests). Measure numbers 113, 114, 115, and 116 are indicated above each measure.

117

118

119

120 Al tempo ♩ = 100

Flûtes 1-2

Hautbois 1-2

Clarinettes 1-2

Bassons 1-2

117

118

119

120

Trompettes 1-2

Cors 1-2

Trombones 1-2

117

118

119

120

Timbales 1-2

117

118

119

120

Violons 1-2

Alto

Violoncelles

Contrebasses

121 122 123 124

Flûtes 1-2

Hautbois 1-2

Clarinettes 1-2

Bassons 1-2

121 122 123 124

Trompettes 1-2

Cors 1-2

Trombones 1-2

121 122 123 124

Timbales 1-2

121 122 123 124

Violons 1-2

Alto

Violoncelles

Contrebasses

125 126 127 128

Flûtes 1-2

Hautbois 1-2

Clarinettes 1-2

Bassons 1-2

125 126 127 128

Trompettes 1-2

Cors 1-2

Trombones 1-2

125 126 127 128

Timbales 1-2

125 126 127 128

Violons 1-2

Alto

Violoncelles

Contrebasses

Detailed description of the musical score: The score is arranged in systems. The first system includes Flûtes 1-2, Hautbois 1-2, Clarinettes 1-2, and Bassons 1-2. The second system includes Trompettes 1-2, Cors 1-2, and Trombones 1-2. The third system includes Timbales 1-2. The fourth system includes Violons 1-2 (with two staves), Alto, Violoncelles, and Contrebasses. Measures 125-127 show mostly rests for woodwinds and brass, with a rhythmic pattern in the strings. Measure 128 features a melodic entry for the Flutes and a change in the string accompaniment.

	129	130	131	132
Flûtes 1-2				
Hautbois 1-2				
Clarinettes 1-2				
Bassons 1-2				
Trompettes 1-2				
Cors 1-2				
Trombones 1-2				
Timbales 1-2				
Violons 1-2				
Alto				
Violoncelles				
Contrebasses				

133 134 135 136

Flûtes 1-2

Hautbois 1-2

Clarinettes 1-2

Bassons 1-2

133 134 135 136

Trompettes 1-2

Cors 1-2

Trombones 1-2

133 134 135 136

Timbales 1-2

133 134 135 136

Violons 1-2

Alto

Violoncelles

Contrebasses

Pizz.