



Faivre Christian

France, BISCHHEIM

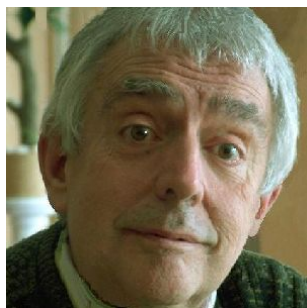
Andante moderato

A propos de l'artiste

Compositeur en tous styles

Page artiste : https://www.free-scores.com/partitions_gratuites_christian-faivre.htm

A propos de la pièce



Titre : Andante moderato
Compositeur : Christian, Faivre
Droit d'auteur : Copyright © Faivre Christian
Instrumentation : Orchestre
Style : Classique

Faivre Christian sur [free-scores.com](https://www.free-scores.com)



Cette partition ne fait pas partie du domaine public. Merci de contacter l'artiste pour toute utilisation hors du cadre privé.



- écouter l'audio
- partager votre interprétation
- commenter la partition
- contacter l'artiste

Andante moderato

Andante moderato

Christian Faivre

1 *Dolce* ♩ = 120

Flûtes 1-2

Hautbois 1-2

Clarinettes 1-2

Bassons 1-2

Trompettes 1-2

Cors 1-2

Trombones 1-2

Timbales 1-2

Violons 1-2

Alto

Violoncelles

Contrebasses

5

p

Flûtes 1-2

Hautbois 1-2

Clarinettes 1-2

Bassons 1-2

5

Trompettes 1-2

Cors 1-2

Trombones 1-2

5

Timbales 1-2

5

Violons 1-2

p

p

Alto

Violoncelles

Contrebasses

9

Flûtes 1-2

Hautbois 1-2

Clarinettes 1-2

Bassons 1-2

9

Trompettes 1-2

Cors 1-2

Trombones 1-2

9

Timbales 1-2

9

Violons 1-2

Alto

Violoncelles

Contrebasses

13

Flûtes 1-2

Hautbois 1-2

Clarinettes 1-2

Bassons 1-2

13

Trompettes 1-2

Cors 1-2

Trombones 1-2

13

Timbales 1-2

13

Violons 1-2

Alto

Violoncelles

Contrebasses

17

Flûtes 1-2

Hautbois 1-2

Clarinettes 1-2

Bassons 1-2

17

Trompettes 1-2

Cors 1-2

Trombones 1-2

17

Timbales 1-2

17

p

Violons 1-2

p

Alto

Violoncelles

Contrebasses

21

Flûtes 1-2

Hautbois 1-2

Clarinettes 1-2

Bassons 1-2

21

Trompettes 1-2

Cors 1-2

Trombones 1-2

21

Timbales 1-2

21

Violons 1-2

Alto

Violoncelles

Contrebasses

25

Flûtes 1-2

Hautbois 1-2

Clarinettes 1-2

Bassons 1-2

25

Trompettes 1-2

Cors 1-2

Trombones 1-2

25

Timbales 1-2

25

Violons 1-2

Alto

Violoncelles

Contrebasses

p

p

p

p

29 *p*

Flûtes 1-2

Hautbois 1-2

Clarinettes 1-2

Bassons 1-2

29

Trompettes 1-2

Cors 1-2

Trombones 1-2

29

Timbales 1-2

29

Violons 1-2

Alto

Violoncelles

Contrebasses

33 *p*

Flûtes 1-2

Hautbois 1-2

Clarinettes 1-2

Bassons 1-2

33

Trompettes 1-2

Cors 1-2

Trombones 1-2

33

Timbales 1-2

33

Violons 1-2 *p*

Alto

Violoncelles

Contrebasses

37 *p*

Flûtes 1-2

Hautbois 1-2

Clarinettes 1-2

Bassons 1-2

37

Trompettes 1-2

Cors 1-2

Trombones 1-2

37

Timbales 1-2

37

Violons 1-2

Alto

Cantabile

Violoncelles

Contrebasses

41

Flûtes 1-2

Hautbois 1-2

Clarinettes 1-2

Bassons 1-2

41

Trompettes 1-2

Cors 1-2

Trombones 1-2

41

Timbales 1-2

41

Violons 1-2

Alto

Violoncelles

Contrebasses

45

Flûtes 1-2

Hautbois 1-2

Clarinettes 1-2

Bassons 1-2

45

Trompettes 1-2

Cors 1-2

Trombones 1-2

45

Timbales 1-2

45

Violons 1-2

Alto

Violoncelles

Contrebasses

49

Flûtes 1-2

Hautbois 1-2

Clarinettes 1-2

Bassons 1-2

49

Trompettes 1-2

Cors 1-2

Trombones 1-2

49

Timbales 1-2

49

Violons 1-2

Alto

Violoncelles

Contrebasses

53

Flûtes 1-2

Hautbois 1-2

Clarinettes 1-2

Bassons 1-2

This section contains four staves for woodwinds. Each staff has a treble or bass clef and a key signature of one flat. Measures 53-56 are mostly empty, with a small horizontal bar on each staff in every measure, indicating that the instruments are silent.

53

Trompettes 1-2

Cors 1-2

Trombones 1-2

This section contains three staves for brass instruments. Each staff has a treble or bass clef and a key signature of one flat. Measures 53-56 are mostly empty, with a small horizontal bar on each staff in every measure, indicating that the instruments are silent.

53

Timbales 1-2

This section contains one staff for timpani with a bass clef and a key signature of one flat. Measures 53-56 are mostly empty, with a small horizontal bar on the staff in every measure, indicating that the timpani are silent.

53

Violons 1-2

Alto

Violoncelles

Contrebasses

This section contains four staves for strings. The Violins 1-2 staff has a treble clef and a key signature of one flat, with notes and dynamics (p) in measures 53-56. The Alto, Violoncelles, and Contrebasses staves have bass clefs and a key signature of one flat, and are mostly empty with a small horizontal bar in every measure, indicating they are silent.

57 *p*

Flûtes 1-2

Hautbois 1-2 *p*

Clarinettes 1-2

Bassons 1-2

57

Trompettes 1-2

Cors 1-2

Trombones 1-2

57

Timbales 1-2

57

Violons 1-2

Alto

Violoncelles

Contrebasses

61

Flûtes 1-2

Hautbois 1-2

Clarinettes 1-2

Bassons 1-2

This section contains four staves for woodwinds. Each staff has a treble or bass clef and a key signature of one flat. The notes are represented by horizontal bars on the staff lines, indicating rests for all instruments in all four measures.

61

Trompettes 1-2

Cors 1-2

Trombones 1-2

This section contains three staves for brass instruments. Each staff has a treble or bass clef and a key signature of one flat. The notes are represented by horizontal bars on the staff lines, indicating rests for all instruments in all four measures.

61

Timbales 1-2

This section contains one staff for timpani with a bass clef and a key signature of one flat. The notes are represented by horizontal bars on the staff lines, indicating rests for both timpani in all four measures.

61

Violons 1-2

Alto

Violoncelles

Contrebasses

This section contains four staves for strings. The Violins 1-2 staff has a treble clef and a key signature of one flat, with notes G4, A4, B4, and C5 in measures 61-64, each marked with a *p* dynamic. The Viola staff has a treble clef and a key signature of one flat, with notes G3, A3, B3, and C4 in measures 61-64, each marked with a *p* dynamic. The Violoncelles and Contrebasses staves have bass clefs and a key signature of one flat, with notes G2, A2, B2, and C3 in measures 61-64, each marked with a *p* dynamic. The other instruments in this section have rests.

65

Flûtes 1-2

Hautbois 1-2

Clarinettes 1-2

Bassons 1-2

This block contains four staves of music for woodwinds. Each staff has a treble or bass clef and a key signature of one flat. Measures 65-68 are mostly empty, with a few horizontal lines indicating rests.

65

Trompettes 1-2

Cors 1-2

Trombones 1-2

This block contains three staves of music for brass instruments. Each staff has a treble or bass clef and a key signature of one flat. Measures 65-68 are mostly empty, with a few horizontal lines indicating rests.

65

Timbales 1-2

This block contains one staff of music for timpani with a bass clef and a key signature of one flat. Measures 65-68 are mostly empty, with a few horizontal lines indicating rests.

65

Violons 1-2

Alto

Violoncelles

Contrebasses

This block contains four staves of music for strings. The Violins 1-2 staff has a treble clef and a key signature of one flat, with a *p* dynamic marking. The other three staves (Alto, Cellos, Double Basses) have bass clefs and a key signature of one flat. Measures 65-68 contain musical notation for the strings, including notes and rests.

69

Flûtes 1-2

Hautbois 1-2

Clarinettes 1-2

Bassons 1-2

69

Trompettes 1-2

Cors 1-2

Trombones 1-2

69

Timbales 1-2

69

Violons 1-2

Alto

Violoncelles

Contrebasses

73

Flûtes 1-2

Hautbois 1-2

Clarinettes 1-2

Bassons 1-2

73

Trompettes 1-2

Cors 1-2

Trombones 1-2

73

Timbales 1-2

73

Violons 1-2

Alto

Violoncelles

Contrebasses

77

Flûtes 1-2

Hautbois 1-2

Clarinettes 1-2

Bassons 1-2

77

Trompettes 1-2

Cors 1-2

Trombones 1-2

77

Timbales 1-2

77

Violons 1-2

Alto

Violoncelles

Contrebasses

81

Flûtes 1-2

Hautbois 1-2

Clarinettes 1-2

Bassons 1-2

81

Trompettes 1-2

Cors 1-2

Trombones 1-2

81

Timbales 1-2

81

Violons 1-2

Alto

Violoncelles

Contrebasses

85

Flûtes 1-2

Hautbois 1-2

Clarinettes 1-2

Bassons 1-2

This section contains four staves for woodwinds. Each staff has a treble or bass clef and a key signature of one flat. The staves are mostly empty, with a small horizontal bar on each staff in every measure, indicating that the instruments are silent.

85

Trompettes 1-2

Cors 1-2

Trombones 1-2

This section contains three staves for brass instruments. Each staff has a treble or bass clef and a key signature of one flat. The staves are mostly empty, with a small horizontal bar on each staff in every measure, indicating that the instruments are silent.

85

Timbales 1-2

This section contains one staff for timpani with a bass clef and a key signature of one flat. The staff is mostly empty, with a small horizontal bar in every measure, indicating that the timpani are silent.

85

Violons 1-2

Alto

Violoncelles

Contrebasses

This section contains four staves for strings. The Violins 1-2 staff has a treble clef and a key signature of one flat, with notes G4, A4, B4, and C5 in measures 85-88, each with a *p* dynamic marking. The Alto staff has a C-clef and a key signature of one flat, with notes G3, A3, B3, and C4 in measures 85-88, each with a *p* dynamic marking. The Violoncelles and Contrebasses staves have bass clefs and a key signature of one flat, and are mostly empty with a small horizontal bar in every measure.

89

Flûtes 1-2

Hautbois 1-2

Clarinettes 1-2

Bassons 1-2

89

Trompettes 1-2

Cors 1-2

Trombones 1-2

89

Timbales 1-2

89

Violons 1-2

Alto

Violoncelles

Contrebasses

93

Flûtes 1-2

Hautbois 1-2

Clarinettes 1-2

Bassons 1-2

93

Trompettes 1-2

Cors 1-2

Trombones 1-2

93

Timbales 1-2

93

Violons 1-2

Alto

Violoncelles

Contrebasses

97

Flûtes 1-2

Hautbois 1-2

Clarinettes 1-2

Bassons 1-2

97

Trompettes 1-2

Cors 1-2

Trombones 1-2

97

Timbales 1-2

97

Violons 1-2

Alto

Violoncelles

Contrebasses

101

Flûtes 1-2

Hautbois 1-2

Clarinettes 1-2

Bassons 1-2

101

Trompettes 1-2

Cors 1-2

Trombones 1-2

101

Timbales 1-2

101

Violons 1-2

Alto

Violoncelles

Contrebasses

p

Pizz.

p

p

p

105

Flûtes 1-2

Hautbois 1-2

Clarinettes 1-2

Bassons 1-2

105

Trompettes 1-2 *p*

Cors 1-2

Trombones 1-2 *p*

105

Timbales 1-2

105

Violons 1-2 *p*

Alto

Violoncelles *p*

Contrebasses *p*

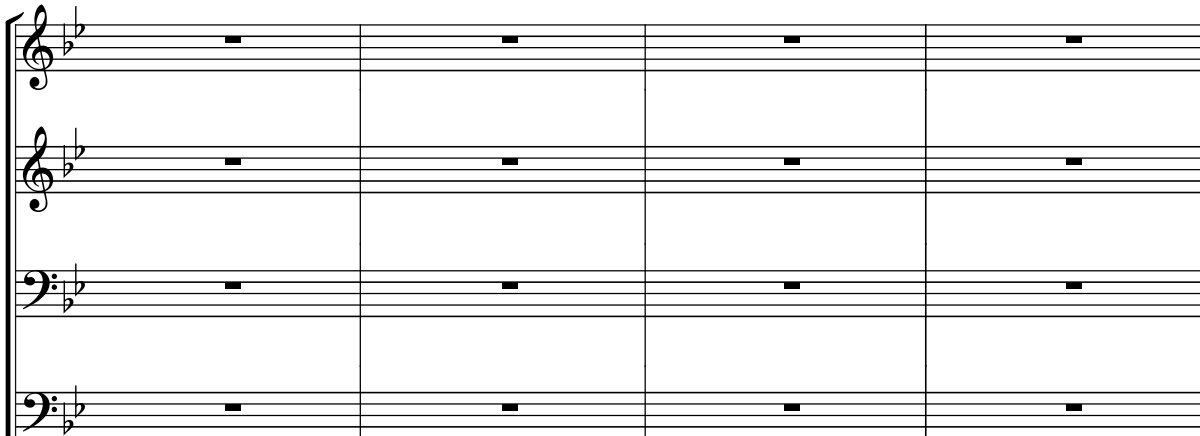
109

Flûtes 1-2

Hautbois 1-2

Clarinettes 1-2

Bassons 1-2

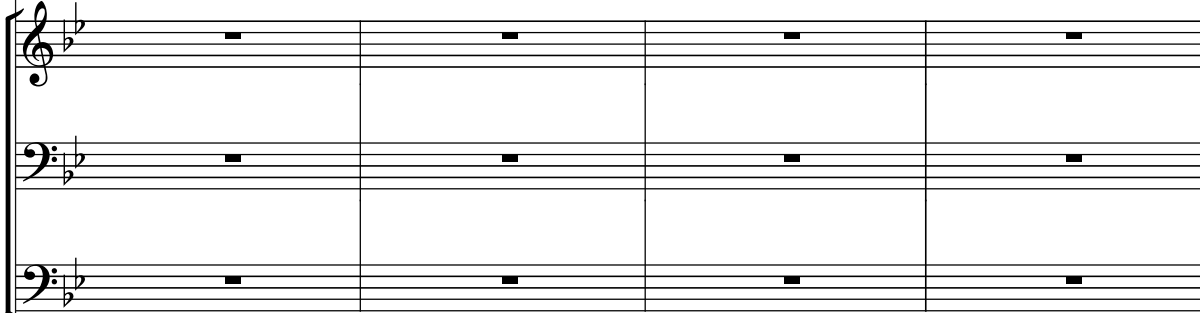


109

Trompettes 1-2

Cors 1-2

Trombones 1-2



109

Timbales 1-2



109

Violons 1-2

Alto

Violoncelles

Contrebasses



113

Flûtes 1-2

Hautbois 1-2

Clarinettes 1-2

Bassons 1-2

113

Trompettes 1-2

Cors 1-2

Trombones 1-2

113

Timbales 1-2

113

Violons 1-2

Alto

Violoncelles

Contrebasses

117

Flûtes 1-2

Hautbois 1-2

Clarinettes 1-2

Bassons 1-2

This block contains four staves of music for woodwinds. Each staff has a treble or bass clef and a key signature of two flats. The notes are mostly rests, with some notes appearing in the first and fourth measures of each staff.

117

Trompettes 1-2

Cors 1-2

Trombones 1-2

This block contains three staves of music for brass instruments. Each staff has a treble or bass clef and a key signature of two flats. The notes are mostly rests, with some notes appearing in the first and fourth measures of each staff.

117

Timbales 1-2

This block contains one staff of music for timbales. The notes are mostly rests, with some notes appearing in the first and fourth measures.

117

Violons 1-2

Alto

Violoncelles

Contrebasses

This block contains four staves of music for strings. The Violins 1-2 staff has a treble clef and a key signature of two flats, with notes and rests in measures 117-120, including a *p* dynamic marking. The other three staves (Alto, Violoncelles, Contrebasses) have bass clefs and a key signature of two flats, with notes and rests in measures 117-120.

121 *p*

Flûtes 1-2

Hautbois 1-2 *p*

Clarinettes 1-2

Bassons 1-2

121

Trompettes 1-2

Cors 1-2

Trombones 1-2

121

Timbales 1-2

121

Violons 1-2

Alto

Violoncelles

Contrebasses

125

Flûtes 1-2

Hautbois 1-2

Clarinettes 1-2

Bassons 1-2

125

Trompettes 1-2

Cors 1-2

Trombones 1-2

125

Timbales 1-2

125

Violons 1-2

Alto

Violoncelles

Contrebasses

129

Flûtes 1-2

Hautbois 1-2

Clarinettes 1-2

Bassons 1-2

129

Trompettes 1-2

Cors 1-2

Trombones 1-2

129

Timbales 1-2

129

Violons 1-2

Alto

Violoncelles

Contrebasses

133

Flûtes 1-2

Hautbois 1-2

Clarinettes 1-2

Bassons 1-2

133

Trompettes 1-2

Cors 1-2

Trombones 1-2

133

Timbales 1-2

133

Violons 1-2

Alto

Violoncelles

Contrebasses

137

Flûtes 1-2

Hautbois 1-2

Clarinettes 1-2

Bassons 1-2

This block contains four staves of music for woodwinds. Each staff has a treble or bass clef and a key signature of two flats. The notation consists of whole rests in every measure from 137 to 140.

137

Trompettes 1-2

Cors 1-2

Trombones 1-2

This block contains three staves of music for brass instruments. Each staff has a treble or bass clef and a key signature of two flats. The notation consists of whole rests in every measure from 137 to 140.

137

Timbales 1-2

This block contains one staff of music for timbales with a bass clef and a key signature of two flats. The notation consists of whole rests in every measure from 137 to 140.

137

Violons 1-2

Alto

Violoncelles

Contrebasses

This block contains four staves of music for strings. The Violins 1-2 staff has a treble clef and a key signature of two flats, with notes in measures 137 and 139, and a dynamic marking of *p*. The Alto staff has an alto clef and a key signature of two flats, with notes in measures 137 and 139. The Violoncelles and Contrebasses staves have bass clefs and a key signature of two flats, with notes in measures 137 and 139. All other staves in this block have whole rests in every measure from 137 to 140.

141

Flûtes 1-2

Hautbois 1-2

Clarinettes 1-2

Bassons 1-2

141

Trompettes 1-2

Cors 1-2

Trombones 1-2

141

Timbales 1-2

141

Violons 1-2

Alto

Violoncelles

Contrebasses

145

Flûtes 1-2

Hautbois 1-2

Clarinettes 1-2

Bassons 1-2

145

Trompettes 1-2

Cors 1-2

Trombones 1-2

145

Timbales 1-2

145

Violons 1-2

Alto

Violoncelles

Contrebasses

149

Flûtes 1-2

Hautbois 1-2

Clarinettes 1-2

Bassons 1-2

149

Trompettes 1-2

Cors 1-2

Trombones 1-2

149

Timbales 1-2

149

Violons 1-2

Alto

Violoncelles

Contrebasses

153

Flûtes 1-2

Hautbois 1-2

Clarinettes 1-2

Bassons 1-2

This block contains four staves of music for woodwinds. Each staff has a clef (treble for Flutes and Oboes, bass for Clarinets and Bassoons) and a key signature of one flat. The notation consists of a single horizontal line with a small black square on it in each of the four measures, indicating that these instruments are silent during this passage.

153

Trompettes 1-2

Cors 1-2

Trombones 1-2

This block contains three staves of music for brass instruments. Each staff has a clef (treble for Trumpets, bass for Horns and Trombones) and a key signature of one flat. The notation consists of a single horizontal line with a small black square on it in each of the four measures, indicating that these instruments are silent during this passage.

153

Timbales 1-2

This block contains one staff of music for Timbales. The staff has a bass clef and a key signature of one flat. The notation consists of a single horizontal line with a small black square on it in each of the four measures, indicating that the timbales are silent during this passage.

153

Violons 1-2

Alto

Violoncelles

Contrebasses

This block contains four staves of music for strings. The Violins 1-2 staff has a treble clef and a key signature of one flat, with notes G4, A4, Bb4, and C5 in measures 1-4, each with an accent (>) and a piano (p) dynamic marking. The Alto, Violoncelles, and Contrebasses staves have clefs (treble for Alto, bass for Violoncelles and Contrebasses) and a key signature of one flat. Each of these three staves has a single horizontal line with a small black square on it in each of the four measures, indicating that these instruments are silent during this passage.

157

Flûtes 1-2

Hautbois 1-2

Clarinettes 1-2

Bassons 1-2

157

Trompettes 1-2

Cors 1-2

Trombones 1-2

157

Timbales 1-2

157

Violons 1-2

Alto

Violoncelles

Contrebasses

161

Flûtes 1-2

Hautbois 1-2

Clarinettes 1-2

Bassons 1-2

161

Trompettes 1-2

Cors 1-2

Trombones 1-2

161

Timbales 1-2

161

Violons 1-2

Alto

Violoncelles

Contrebasses

165

Flûtes 1-2

Hautbois 1-2

Clarinettes 1-2

Bassons 1-2

165

Trompettes 1-2

Cors 1-2

Trombones 1-2

165

Timbales 1-2

165

Violons 1-2

Alto

Violoncelles

Contrebasses

p

p

p

p

p

p

p

p

169

Flûtes 1-2

Hautbois 1-2

Clarinettes 1-2

Bassons 1-2

169

Trompettes 1-2

Cors 1-2

Trombones 1-2

169

Timbales 1-2

169

Violons 1-2

Alto

Violoncelles

Contrebasses

p

p

Arco

173

Flûtes 1-2

Hautbois 1-2

Clarinettes 1-2

Bassons 1-2

173

Trompettes 1-2

Cors 1-2

Trombones 1-2

173

Timbales 1-2

173

Violons 1-2

Alto

Violoncelles

Contrebasses

177

Flûtes 1-2

Hautbois 1-2

Clarinettes 1-2

Bassons 1-2

177

Trompettes 1-2

Cors 1-2

Trombones 1-2

177

Timbales 1-2

177

Violons 1-2

Alto

Violoncelles

Contrebasses

181

Flûtes 1-2

Hautbois 1-2

Clarinettes 1-2

Bassons 1-2

This block contains four staves of music for woodwinds. Each staff has a treble or bass clef and contains a whole rest in every measure of the four-measure system.

181

Trompettes 1-2

Cors 1-2

Trombones 1-2

This block contains three staves of music for brass instruments. Each staff has a treble or bass clef and contains a whole rest in every measure of the four-measure system.

181

Timbales 1-2

This block contains one staff of music for timpani with a bass clef and a whole rest in every measure of the four-measure system.

181

Violons 1-2

Alto

Violoncelles

Contrebasses

This block contains four staves of music for strings. The Violins 1-2 staff has a treble clef and contains a half note with a fermata and a dynamic marking of *p*. The Viola staff has a treble clef and contains a half note with a fermata. The Cellos and Double Basses staves have bass clefs and contain whole rests in every measure of the four-measure system.

185 *p*

Flûtes 1-2

Hautbois 1-2 *p*

Clarinettes 1-2

Bassons 1-2

185

Trompettes 1-2

Cors 1-2

Trombones 1-2

185

Timbales 1-2

185

Violons 1-2

Alto

Violoncelles

Contrebasses

189

Flûtes 1-2

Hautbois 1-2

Clarinettes 1-2

Bassons 1-2

This block contains four staves of music for woodwinds. Each staff has a clef (treble for Flutes and Oboes, bass for Clarinets and Bassoons) and a brace on the left. The staves are empty, with only a small horizontal bar on each line in every measure, indicating that these instruments are silent during this passage.

189

Trompettes 1-2

Cors 1-2

Trombones 1-2

This block contains three staves of music for brass instruments. Each staff has a clef (treble for Trumpets, bass for Horns and Trombones) and a brace on the left. The staves are empty, with only a small horizontal bar on each line in every measure, indicating that these instruments are silent during this passage.

189

Timbales 1-2

This block contains one staff of music for Timbales. The staff has a bass clef and a brace on the left. It is empty, with only a small horizontal bar on the line in every measure, indicating that the timbales are silent during this passage.

189

Violons 1-2

Alto

Violoncelles

Contrebasses

This block contains four staves of music for strings. The Violins 1-2 staff has a treble clef and a brace on the left, with notes and a *p* dynamic marking. The Alto staff has an alto clef and a brace on the left, with notes and a *p* dynamic marking. The Violoncelles and Contrebasses staves have bass clefs and braces on the left, and are empty with only a small horizontal bar on each line in every measure.

193

Flûtes 1-2

Hautbois 1-2

Clarinettes 1-2

Bassons 1-2

193

Trompettes 1-2

Cors 1-2

Trombones 1-2

193

Timbales 1-2

193

Violons 1-2

Alto

Violoncelles

Contrebasses

197

Flûtes 1-2

Hautbois 1-2

Clarinettes 1-2

Bassons 1-2

This block contains four staves of music for woodwinds. Each staff has a clef (treble for Flutes and Oboes, bass for Clarinets and Bassoons) and a key signature of one flat. The notation consists of rests in every measure from 197 to 200.

197

Trompettes 1-2

Cors 1-2

Trombones 1-2

This block contains three staves of music for brass instruments. Each staff has a clef (treble for Trumpets and Horns, bass for Trombones) and a key signature of one flat. The notation consists of rests in every measure from 197 to 200.

197

Timbales 1-2

This block contains one staff of music for timbales with a bass clef and a key signature of one flat. The notation consists of rests in every measure from 197 to 200.

197

Violons 1-2

Alto

Violoncelles

Contrebasses

This block contains four staves of music for strings. The Violins 1-2 staff has a treble clef and a key signature of one flat, with notes in measures 197 and 200, and a dynamic marking of *p*. The Viola staff has a treble clef and a key signature of one flat, with notes in measures 197 and 200. The Violoncelles and Contrebasses staves have bass clefs and a key signature of one flat, with notes in measures 197 and 200. The Alto staff has an alto clef and a key signature of one flat, with rests in all measures.

201

Flûtes 1-2

Hautbois 1-2

Clarinettes 1-2

Bassons 1-2

This block contains four staves of music for woodwind instruments. Each staff has a brace on the left side. The staves are: Flûtes 1-2 (treble clef), Hautbois 1-2 (treble clef), Clarinettes 1-2 (bass clef), and Bassons 1-2 (bass clef). All staves show rests for measures 201, 202, 203, and 204.

201

Trompettes 1-2

Cors 1-2

Trombones 1-2

This block contains three staves of music for brass instruments. Each staff has a brace on the left side. The staves are: Trompettes 1-2 (treble clef), Cors 1-2 (bass clef), and Trombones 1-2 (bass clef). All staves show rests for measures 201, 202, 203, and 204.

201

Timbales 1-2

This block contains one staff of music for timpani. The staff has a brace on the left side and shows rests for measures 201, 202, 203, and 204.

201

Violons 1-2

Alto

Violoncelles

Contrebasses

This block contains four staves of music for string instruments. The Violons 1-2 staff is grouped with a brace and contains a melodic line in the first measure of measure 201, followed by rests. The other three staves (Alto, Violoncelles, Contrebasses) show rests for all four measures. Dynamics markings 'p' are present in the Violons 1-2 staff in measures 203 and 204.

205

Flûtes 1-2

Hautbois 1-2

Clarinettes 1-2

Bassons 1-2

This block contains four staves of music for woodwinds. Each staff has a brace on the left and contains four measures of music. In every measure, there is a whole rest on the top line of the staff, indicating that all instruments in this section are silent during this passage.

205

Trompettes 1-2

Cors 1-2

Trombones 1-2

This block contains three staves of music for brass instruments. Each staff has a brace on the left and contains four measures of music. In every measure, there is a whole rest on the top line of the staff, indicating that all instruments in this section are silent during this passage.

205

Timbales 1-2

This block contains one staff of music for timpani. The staff has a brace on the left and contains four measures of music. In every measure, there is a whole rest on the top line of the staff, indicating that the timpani is silent during this passage.

205

Violons 1-2

Alto

Violoncelles

Contrebasses

This block contains four staves of music for strings. The Violins 1-2 staff has a brace on the left and contains four measures of music with notes and rests. The other three staves (Alto, Violoncelles, and Contrebasses) have braces on the left and contain four measures of music with whole rests in every measure, indicating they are silent.

p

209

Flûtes 1-2

Hautbois 1-2

Clarinettes 1-2

Bassons 1-2

This block contains four staves of music for woodwinds. Each staff has a brace on the left and contains four measures of music. In each measure, there is a single flat note (Bb) on the staff line, with a small horizontal bar above it, indicating a rest.

209

Trompettes 1-2

Cors 1-2

Trombones 1-2

This block contains three staves of music for brass instruments. Each staff has a brace on the left and contains four measures of music. In each measure, there is a single flat note (Bb) on the staff line, with a small horizontal bar above it, indicating a rest.

209

Timbales 1-2

This block contains one staff of music for timbales. It has a brace on the left and contains four measures of music. In each measure, there is a single flat note (Bb) on the staff line, with a small horizontal bar above it, indicating a rest.

209

Violons 1-2

Alto

Violoncelles

Contrebasses

This block contains four staves of music for strings. The Violins 1-2 staff has a brace on the left and contains four measures of music. The first measure has a Bb note with a fermata. The second, third, and fourth measures have a Bb note with a fermata and a *p* dynamic marking. The Alto, Violoncelles, and Contrebasses staves have braces on the left and contain four measures of music. In each measure, there is a single flat note (Bb) on the staff line, with a small horizontal bar above it, indicating a rest.

213

Flûtes 1-2

Hautbois 1-2

Clarinettes 1-2

Bassons 1-2

213

Trompettes 1-2

Cors 1-2

Trombones 1-2

213

Timbales 1-2

213

Violons 1-2

Alto

Violoncelles

Contrebasses

217

Flûtes 1-2

Hautbois 1-2

Clarinettes 1-2

Bassons 1-2

217

Trompettes 1-2

Cors 1-2

Trombones 1-2

217

Timbales 1-2

217

Violons 1-2

Alto

Violoncelles

Contrebasses

221

Flûtes 1-2

Hautbois 1-2

Clarinettes 1-2

Bassons 1-2

221

Trompettes 1-2

Cors 1-2

Trombones 1-2

221

Timbales 1-2

221

Violons 1-2

Alto

Violoncelles

Contrebasses

225

Flûtes 1-2

Hautbois 1-2

Clarinettes 1-2

Bassons 1-2

225

Trompettes 1-2

Cors 1-2

Trombones 1-2

225

Timbales 1-2

225

Violons 1-2

Alto

Violoncelles

Contrebasses

229

Flûtes 1-2

Hautbois 1-2

Clarinettes 1-2

Bassons 1-2

229

Trompettes 1-2

Cors 1-2

Trombones 1-2

229

Timbales 1-2

229

Violons 1-2

Alto

Violoncelles

Contrebasses