



# Ralf Behrens

Allemagne, Edewecht

## Etude E major (Opus 10-3 - in Bb - low) Chopin, Frédéric

### A propos de l'artiste

Hello, my name is Ralf Behrens, born in 1958. My instruments are the guitar, the church organ, several recorders and some more. Especially for my pupils and a few small music ensembles I arrange pieces of music for studying and/or performing. Feel free to use my arrangements, but – of course – donations are welcome. Have fun.

**Page artiste :** [https://www.free-scores.com/partitions\\_gratuites\\_ralfbehrens.htm](https://www.free-scores.com/partitions_gratuites_ralfbehrens.htm)

### A propos de la pièce



<b>Titre :</b>	Etude E major [Opus 10-3 - in Bb - low]
<b>Compositeur :</b>	Chopin, Frédéric
<b>Arrangeur :</b>	Behrens, Ralf
<b>Droit d'auteur :</b>	Copyright © Ralf Behrens
<b>Editeur :</b>	Behrens, Ralf
<b>Instrumentation :</b>	Trompette et Guitare
<b>Style :</b>	Romantique

### Ralf Behrens sur [free-scores.com](https://www.free-scores.com)



Cette partition ne fait pas partie du domaine public. Merci de contacter l'artiste pour toute utilisation hors du cadre privé.

**Interdiction de diffusion sur d'autres sites Web.**



- écouter l'audio
- partager votre interprétation
- commenter la partition
- contacter l'artiste

# Opus 10-3 - Etude E major

Frederic Chopin (1810-1849) (Arr.: Ralf Behrens)

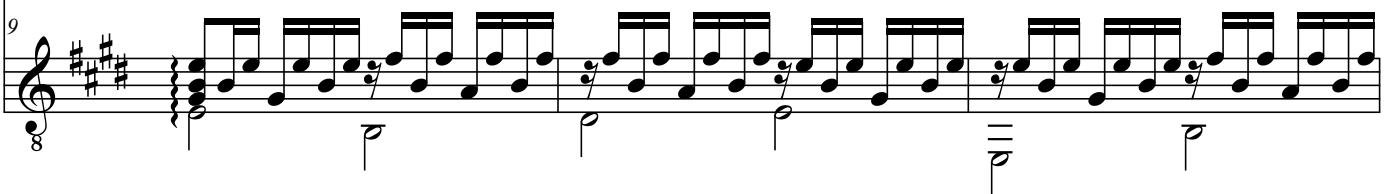
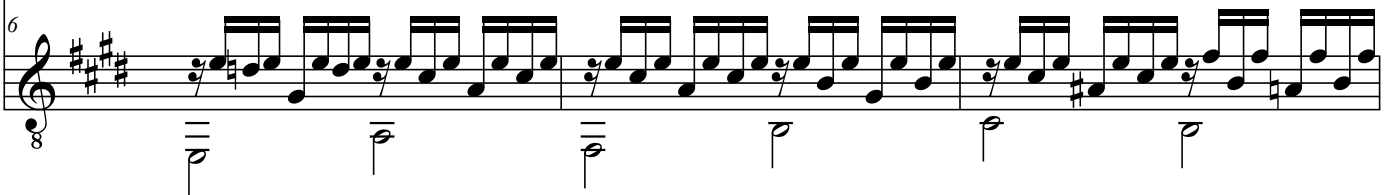
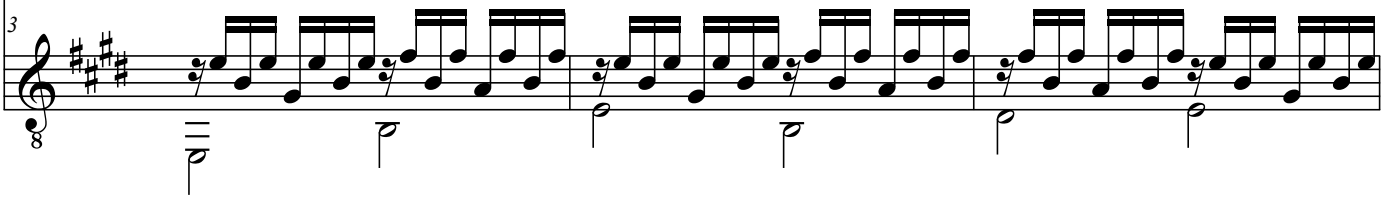
www.rabe-musik-und-mehr.de - ©2016 RaBe

♩ = c. 50

Trumpet in Bb



Guitar



12

Musical notation for measures 12-14, first system. The top staff contains a melodic line with eighth and sixteenth notes. The bottom staff contains a bass line with eighth notes and rests.

15

Musical notation for measures 15-17, second system. The top staff continues the melodic line. The bottom staff features a complex bass line with sixteenth-note patterns and accents.

18

Musical notation for measures 18-20, third system. The top staff shows a melodic phrase with a first ending bracket. The bottom staff has a bass line with sixteenth-note patterns and a first ending bracket.

21

Musical notation for measures 21-23, fourth system. The top staff includes a first ending bracket, a repeat sign, and the marking 'rit.'. The bottom staff has a bass line with sixteenth-note patterns and a first ending bracket.

24

Musical notation for measures 24-26, fifth system. The top staff features a melodic line with a first ending bracket. The bottom staff has a bass line with sixteenth-note patterns and a first ending bracket.