



# Bernard Dewagtere

France, SIN LE NOBLE

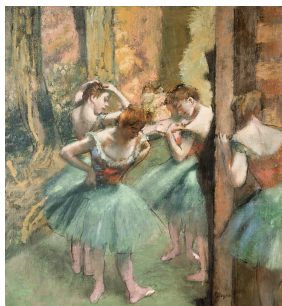
## Menuet du "Quintette à cordes en Mi" (G.275 ; Op.11 No.5) Boccherini, Luigi

### A propos de l'artiste

Docteur en musicologie, chef d'orchestre et compositeur.  
Compositions et arrangements de toutes époques, dans tous les styles ou genres musicaux et pour n'importe quelles formations instrumentales ou vocales.

**Qualification :** Docteur en Musicologie  
**Sociétaire :** SACEM - Code IPI artiste : 342990  
**Page artiste :** [https://www.free-scores.com/partitions\\_gratuites\\_bernard-dewagtere.htm](https://www.free-scores.com/partitions_gratuites_bernard-dewagtere.htm)

### A propos de la pièce



**Titre :** Menuet du "Quintette à cordes en Mi"  
[G.275 ; Op.11 No.5]  
**Compositeur :** Boccherini, Luigi  
**Arrangeur :** Dewagtere, Bernard  
**Droit d'auteur :** Copyright © Bernard Dewagtere  
**Editeur :** Dewagtere, Bernard  
**Instrumentation :** Alto et Piano (ou orgue)  
**Style :** Classique

### Bernard Dewagtere sur [free-scores.com](https://www.free-scores.com)

#### LICENCE

Cette partition nécessite une autorisation :

- pour les représentations publiques
- pour l'utilisation par les professeurs

**S'acquies de cette licence sur :**

<https://www.free-scores.com/licence?p=afRPUBWT9k>



- écouter l'audio
- partager votre interprétation
- commenter la partition
- s'acquies de la licence
- contacter l'artiste

Interdiction de diffusion sur d'autres sites Web.

# Menuet du "Quintette à cordes en Mi"

G.275 ; Op.11 No.5

Luigi Boccherini (1743-1805)

Transc. : Bernard Dewagtere


Tempo di Menuetto con un poco di moto

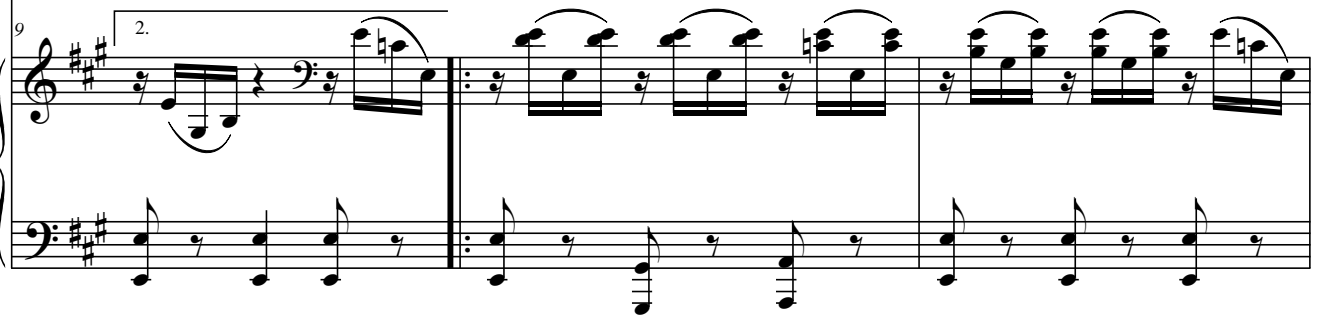
The image displays a musical score for the Minuet from the String Quintet in E major by Luigi Boccherini. The score is arranged for Alto and Piano (Pno) parts. The Alto part is written in a bass clef with a key signature of three sharps (F#, C#, G#) and a 3/4 time signature. The Piano part is written in a grand staff with a key signature of three sharps and a 3/4 time signature. The score is divided into three systems. The first system shows the beginning of the piece, with the Alto part starting on a half note G4 and the Piano part starting with a sixteenth-note accompaniment. The second system continues the piece, featuring a triplet of eighth notes in the Alto part and a sixteenth-note accompaniment in the Piano part. The third system concludes the piece, with the Alto part ending on a half note G4 and the Piano part ending with a sixteenth-note accompaniment. The score includes dynamic markings such as *mp* and *p*, and performance instructions like *tr* (trill) and *1.* (first ending). The Alto part is labeled "Alto" and the Piano part is labeled "Pno".

©2017Dewagtere


Menuet du "Quintette à cordes en Mi"

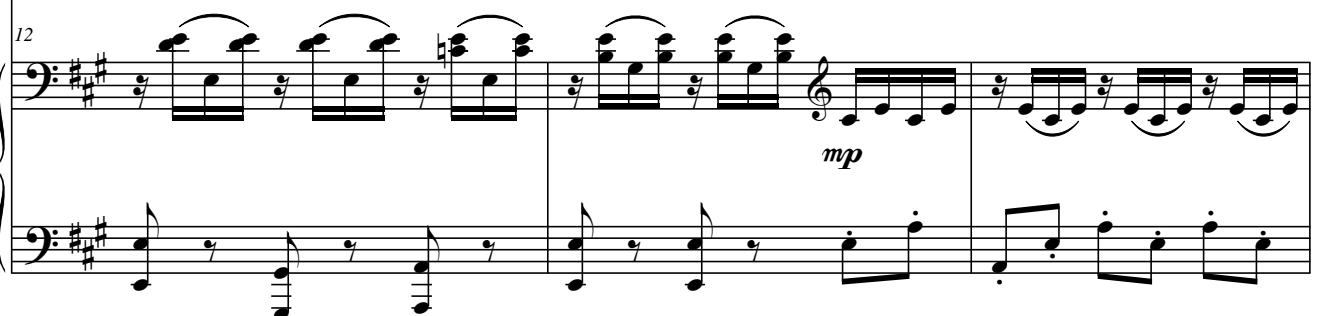
2/9

Alt. 

Pno 

12

Alt. 


Pno 

15

Alt. 

Pno 

19

Alt. 

Pno 