



Bernard Dewagtere

France, SIN LE NOBLE

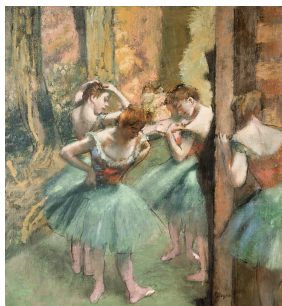
Menuet du "Quintette à cordes en Mi" (G.275 ; Op.11 No.5) Boccherini, Luigi

A propos de l'artiste

Docteur en musicologie, chef d'orchestre et compositeur.
Compositions et arrangements de toutes époques, dans tous les styles ou genres musicaux et pour n'importe quelles formations instrumentales ou vocales.

Qualification : Docteur en Musicologie
Sociétaire : SACEM - Code IPI artiste : 342990
Page artiste : https://www.free-scores.com/partitions_gratuites_bernard-dewagtere.htm

A propos de la pièce



Titre : Menuet du "Quintette à cordes en Mi"
[G.275 ; Op.11 No.5]
Compositeur : Boccherini, Luigi
Arrangeur : Dewagtere, Bernard
Droit d'auteur : Copyright © Bernard Dewagtere
Editeur : Dewagtere, Bernard
Instrumentation : Violon, Clavecin
Style : Classique

Bernard Dewagtere sur [free-scores.com](https://www.free-scores.com)

LICENCE

Cette partition nécessite une autorisation :

- pour les représentations publiques
- pour l'utilisation par les professeurs

S'acquies de cette licence sur :

<https://www.free-scores.com/licence?p=atOLKxhKps>



- écouter l'audio
- partager votre interprétation
- commenter la partition
- s'acquies de la licence
- contacter l'artiste

Interdiction de diffusion sur d'autres sites Web.

Menuet du "Quintette à cordes en Mi"

G.275 ; Op.11 No.5

Luigi Boccherini (1743-1805)

Transc. : Bernard Dewagtere

Tempo di Menuetto con un poco di moto

The image displays a musical score for the Minuet from the String Quintet in E major by Luigi Boccherini. The score is arranged for Violin (Vln.) and Clavichord (Clav.). The key signature is E major (three sharps) and the time signature is 3/4. The tempo is marked "Tempo di Menuetto con un poco di moto". The score is divided into three systems. The first system shows the beginning of the piece, with the Violin part starting on a treble clef and the Clavichord part on a grand staff. The second system continues the piece, with the Violin part starting on a treble clef and the Clavichord part on a grand staff. The third system shows the end of the piece, with the Violin part starting on a treble clef and the Clavichord part on a grand staff. The score includes dynamic markings such as *mf* and *tr*, and includes first and second endings for the final section.

Menuet du "Quintette à cordes en Mi"

The image displays a musical score for a Minuet from the "String Quintet in E" by Wolfgang Amadeus Mozart. The score is arranged in two systems, each containing a Violin (Vln.) part and a Piano (Clav.) part. The key signature is E major (three sharps: F#, C#, G#) and the time signature is 3/4. The first system covers measures 10 to 12, and the second system covers measures 13 to 15. The third system covers measures 16 to 18, and the fourth system covers measures 19 to 20. The Violin part features a melodic line with various ornaments and phrasing. The Piano part provides a rhythmic accompaniment with a steady eighth-note pattern in the right hand and a more active bass line. The score includes dynamic markings such as accents (>) and a trill (tr) in measure 19. The piece concludes with a repeat sign and two endings in measure 20.