



# Bernard Dewagtere

France, SIN LE NOBLE

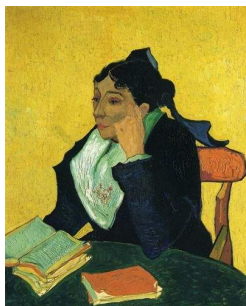
## L'Arlésienne (Suite n°2) – 6. Intermezzo Bizet, Georges

### A propos de l'artiste

Docteur en musicologie, chef d'orchestre et compositeur.  
Compositions et arrangements de toutes époques, dans tous les styles ou genres musicaux et pour n'importe quelles formations instrumentales ou vocales.

**Qualification :** Docteur en Musicologie  
**Sociétaire :** SACEM - Code IPI artiste : 342990  
**Page artiste :** [https://www.free-scores.com/partitions\\_gratuites\\_bernard-dewagtere.htm](https://www.free-scores.com/partitions_gratuites_bernard-dewagtere.htm)

### A propos de la pièce



**Titre :** L'Arlésienne (Suite n°2) – 6. Intermezzo  
**Compositeur :** Bizet, Georges  
**Arrangeur :** Dewagtere, Bernard  
**Droit d'auteur :** Copyright © Bernard Dewagtere  
**Editeur :** Dewagtere, Bernard  
**Instrumentation :** Basson, Piano  
**Style :** Romantique

### Bernard Dewagtere sur [free-scores.com](https://www.free-scores.com)

#### LICENCE

Cette partition nécessite une autorisation :  
- pour les représentations publiques  
- pour l'utilisation par les professeurs

**S'acquitter de cette licence sur :**

<https://www.free-scores.com/licence?p=atAWmsdys3>



- écouter l'audio
- partager votre interprétation
- commenter la partition
- s'acquitter de la licence
- contacter l'artiste

Interdiction de diffusion sur d'autres sites Web.

# L'Arlésienne (Suite n°2)

## 6. Intermezzo

Georges Bizet (1872)

Transc. : Bernard Dewagtere

Maestoso ♩ = 88

Basson

Piano

Measures 1-5. Bassoon part is mostly rests. Piano part starts with a melody in the right hand and accompaniment in the left hand. Dynamics include *ff* and *pp*.

Bn.

Piano

Measures 6-10. Bassoon part is mostly rests. Piano part continues the melody and accompaniment. Dynamics include *pp*, *p*, and *ff*.

Bn.

Piano

Measures 11-15. Bassoon part is mostly rests. Piano part continues the melody and accompaniment. Dynamics include *pp* and *p*. A *rit.* marking is present above the piano part.

L'Arlesienne (Suite n°2)

2  
16 Allegro moderato

Bn.

mp

sonore

p

Detailed description: This system covers measures 16 to 19. The Bn. part (bass clef) starts with a whole rest in measure 16, then plays a melodic line with a slur over measures 17-19. The piano part (treble and bass clefs) features a rhythmic accompaniment of eighth notes in the right hand and a bass line with eighth notes and rests in the left hand. Dynamics include *mp* and *p*. The tempo is *Allegro moderato*.

Bn.

20

20

Detailed description: This system covers measures 20 to 23. The Bn. part (bass clef) has a whole rest in measure 20, followed by a melodic line with a slur over measures 21-23. The piano part (treble and bass clefs) continues with the rhythmic accompaniment. Dynamics include *p*. The tempo is *Allegro moderato*.

Bn.

24

mf

f

24

ff

dim. molto

Detailed description: This system covers measures 24 to 27. The Bn. part (bass clef) has a whole rest in measure 24, followed by a melodic line with a slur over measures 25-27. The piano part (treble and bass clefs) continues with the rhythmic accompaniment. Dynamics include *mf*, *f*, *ff*, and *dim. molto*. The tempo is *Allegro moderato*.

L'Arlesienne (Suite n°2)

Bn. 28

3 *p* *cresc.*

Bn. 32

*f* *p*

Bn. 36

*sf* < *p* < *sf* < *p* < *cresc. molto*

*sf* < *p* *sf* < *p* *cresc. molto*

L'Arlésienne (Suite n°2)

4  
40

Bn.

*ff* *dim.* *p* *cresc. molto*

40

*ff* *dim.* *p* *cresc. molto*

44

Bn.

*ff* *cresc.* *rit. molto* **1° Tempo** *ff*

44

*ff* *cresc.* *rit. molto* **1° Tempo** *ff*

44

*ff* *cresc.* *ff*

49

Bn.

*dolce* *p*

49

*dolce* *p*

49

*dolce* *pp*

3

L'Arlesienne (Suite n°2)

54

Bn.

*f* *p*

58

Bn.

*p* *dolce* *pp*

62

Bn.

*beaucoup plus lent* *f* *ff*