



Bernard Dewagtere

France, SIN LE NOBLE

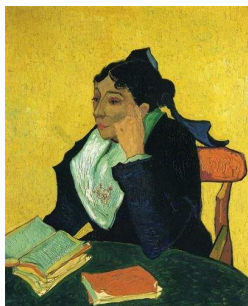
L'Arlésienne (Suite n°2) – 6. Intermezzo Bizet, Georges

A propos de l'artiste

Docteur en musicologie, chef d'orchestre et compositeur.
Compositions et arrangements de toutes époques, dans tous les styles ou genres musicaux et pour n'importe quelles formations instrumentales ou vocales.

Qualification : Docteur en Musicologie
Sociétaire : SACEM - Code IPI artiste : 342990
Page artiste : https://www.free-scores.com/partitions_gratuites_bernard-dewagtere.htm

A propos de la pièce



Titre : L'Arlésienne (Suite n°2) – 6. Intermezzo
Compositeur : Bizet, Georges
Arrangeur : Dewagtere, Bernard
Droit d'auteur : Copyright © Bernard Dewagtere
Editeur : Dewagtere, Bernard
Instrumentation : Cor anglais et piano
Style : Romantique

Bernard Dewagtere sur [free-scores.com](https://www.free-scores.com)

LICENCE

Cette partition nécessite une autorisation :
- pour les représentations publiques
- pour l'utilisation par les professeurs

S'acquitter de cette licence sur :
<https://www.free-scores.com/licence?p=aGjPhAouRT>



- écouter l'audio
- partager votre interprétation
- commenter la partition
- s'acquitter de la licence
- contacter l'artiste

Interdiction de diffusion sur d'autres sites Web.

L'Arlésienne (Suite n°2)

6. Intermezzo

Georges Bizet (1872)

Transc. : Bernard Dewagtere

Maestoso ♩ = 88

Cor anglais

Piano

Measures 1-5. The Cor anglais part is mostly rests. The Piano part features a rhythmic accompaniment with accents and dynamic markings *ff* and *pp*.

Cor. A.

Measures 6-10. The Cor. A. part is mostly rests. The Piano part features a rhythmic accompaniment with accents and dynamic markings *pp*, *p*, and *ff*.

Cor. A.

rit.

Measures 11-15. The Cor. A. part is mostly rests. The Piano part features a rhythmic accompaniment with accents and dynamic markings *pp* and *p*. A *rit.* marking is present above the piano part.

L'Arlésienne (Suite n°2)

2 **Allegro moderato**
16

Cor. A.

Musical notation for the first staff of the first system, labeled 'Cor. A.'. It shows measures 2 through 16. The music begins with a whole rest in measure 2, followed by a melodic line starting in measure 3. The dynamic marking *mp* is placed below the staff.

Musical notation for the piano accompaniment of the first system, measures 16 through 20. The right hand features a complex rhythmic pattern of chords and eighth notes, while the left hand plays a steady eighth-note accompaniment. The dynamic marking *p* is at the start, and *sonore* is written above the staff.

Cor. A.

Musical notation for the second staff of the first system, labeled 'Cor. A.'. It shows measures 20 through 24. The melodic line continues from the previous system, with a whole rest in measure 20.

Musical notation for the piano accompaniment of the second system, measures 20 through 24. The right hand continues with its rhythmic accompaniment, and the left hand maintains its eighth-note pattern.

Cor. A.

Musical notation for the third staff of the first system, labeled 'Cor. A.'. It shows measures 24 through 28. The dynamic markings *mf* and *f* are placed below the staff.

Musical notation for the piano accompaniment of the third system, measures 24 through 28. The right hand continues with its rhythmic accompaniment, and the left hand maintains its eighth-note pattern. The dynamic markings *ff* and *dim. molto* are placed below the staff.

L'Arlésienne (Suite n°2)

Cor. A.

28

3

p *cresc.*

Cor. A.

32

f *p*

Cor. A.

36

sf *p* *sf* *p* *cresc. molto*

L'Arlésienne (Suite n°2)

4
40
Cor. A.

ff *dim.* *p* *cresc. molto*

ff *dim.* *p* *cresc. molto*

44
Cor. A.

ff *cresc.* *rit. molto* **1° Tempo** *ff*

ff *cresc.* *ff*

49
Cor. A.

dolce *p*

dolce *pp*

3

Cor. A.

54

f *p*

Cor. A.

58

p *dolce* *pp*

Cor. A.

62

beaucoup plus lent

f *ff*