



# Bernard Dewagtere

France, SIN LE NOBLE

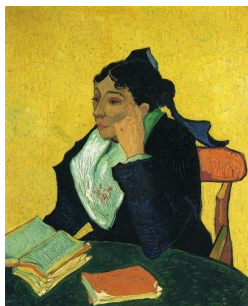
## L'Arlésienne (Suite n°2) – 6. Intermezzo Bizet, Georges

### A propos de l'artiste

Docteur en musicologie, chef d'orchestre et compositeur.  
Compositions et arrangements de toutes époques, dans tous les styles ou genres musicaux et pour n'importe quelles formations instrumentales ou vocales.

**Qualification :** Docteur en Musicologie  
**Sociétaire :** SACEM - Code IPI artiste : 342990  
**Page artiste :** [https://www.free-scores.com/partitions\\_gratuites\\_bernard-dewagtere.htm](https://www.free-scores.com/partitions_gratuites_bernard-dewagtere.htm)

### A propos de la pièce



**Titre :** L'Arlésienne (Suite n°2) – 6. Intermezzo  
**Compositeur :** Bizet, Georges  
**Arrangeur :** Dewagtere, Bernard  
**Droit d'auteur :** Copyright © Bernard Dewagtere  
**Editeur :** Dewagtere, Bernard  
**Instrumentation :** Flute et Piano  
**Style :** Romantique

### Bernard Dewagtere sur [free-scores.com](https://www.free-scores.com)

#### LICENCE

Cette partition nécessite une autorisation :  
- pour les représentations publiques  
- pour l'utilisation par les professeurs

**S'acquitter de cette licence sur :**  
<https://www.free-scores.com/licence?p=aaHqjNIUEA>



- écouter l'audio
- partager votre interprétation
- commenter la partition
- s'acquitter de la licence
- contacter l'artiste

Interdiction de diffusion sur d'autres sites Web.

# L'Arlésienne (Suite n°2)

## 6. Intermezzo

Georges Bizet (1872)

Transc. : Bernard Dewagtere

Maestoso ♩ = 88

Flûte

Piano

Measures 1-5. Flute part: mostly rests. Piano part: rhythmic accompaniment with accents. Dynamics: *ff* (measures 1-4), *pp* (measure 5).

Fl.

Measures 6-10. Flute part: mostly rests. Piano part: rhythmic accompaniment with accents. Dynamics: *pp* (measure 6), *p* (measures 7-8), *ff* (measures 9-10).

Fl.

*rit.*

Measures 11-15. Flute part: mostly rests. Piano part: rhythmic accompaniment with accents. Dynamics: *pp* (measures 11-12), *p* (measures 13-15). *rit.* marking above measure 11.

L'Arlésienne (Suite n°2)

2 **Allegro moderato**

Fl. *mp*

16 *sonore* *p*

Musical score for Flute and Piano, measures 2-16. The Flute part starts at measure 2 with a rest, then plays a melodic line. The Piano part starts at measure 16 with a piano accompaniment. Dynamics include *mp*, *sonore*, and *p*.

Fl. *f*

20

Musical score for Flute and Piano, measures 20-24. The Flute part continues with a melodic line. The Piano part continues with a piano accompaniment. Dynamics include *f*.

Fl. *mf* *f*

24 *ff* *dim. molto*

Musical score for Flute and Piano, measures 24-28. The Flute part continues with a melodic line. The Piano part continues with a piano accompaniment. Dynamics include *mf*, *f*, *ff*, and *dim. molto*.

Fl. 28 *p* *cresc.*

Fl. 32 *f* *p*

Fl. 36 *sf* *p* *sf* *p* *cresc. molto*

L'Arlésienne (Suite n°2)

40

Fl.

*ff* *dim.* *p* *cresc. molto*

40

*ff* *dim.* *p* *cresc. molto*

44

Fl.

*ff* *cresc.* *rit. molto* **1° Tempo** *ff*

44

*ff* *cresc.* *rit. molto* **1° Tempo** *ff*

44

*ff* *cresc.* *ff*

49

Fl.

*dolce* *p*

49

*dolce* *p*

49

*dolce* *pp*

3

54 Fl. *f* *p*

Musical score for Flute and Piano, measures 54-57. The flute part starts with a forte (*f*) dynamic and ends with a piano (*p*) dynamic. The piano accompaniment features chords and arpeggiated figures.

58 Fl. *p*

58 *dolce* *pp*

Musical score for Flute and Piano, measures 58-61. The flute part is marked piano (*p*). The piano accompaniment includes a section marked *dolce* and another marked *pp*.

62 Fl. *f*

62 *ff*

*beaucoup plus lent*

Musical score for Flute and Piano, measures 62-65. The flute part is marked forte (*f*). The piano accompaniment is marked fortissimo (*ff*) and includes the instruction *beaucoup plus lent*.