



# Faivre Christian

France, BISCHHEIM

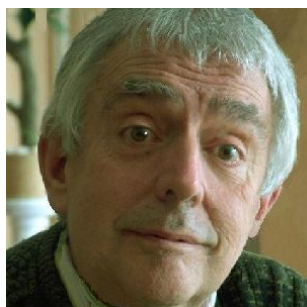
## Deux Marches militaires (WoO 18-19) Beethoven, Ludwig van

### A propos de l'artiste

Compositeur en tous styles

**Page artiste :** [https://www.free-scores.com/partitions\\_gratuites\\_christian-faivre.htm](https://www.free-scores.com/partitions_gratuites_christian-faivre.htm)

### A propos de la pièce



**Titre :** Deux Marches militaires  
[WoO 18-19]  
**Compositeur :** Beethoven, Ludwig van  
**Arrangeur :** Christian, Faivre  
**Droit d'auteur :** Copyright © Faivre Christian  
**Instrumentation :** Piano seul  
**Style :** Classique

### Faivre Christian sur [free-scores.com](https://www.free-scores.com)



Cette partition ne fait pas partie du domaine public. Merci de contacter l'artiste pour toute utilisation hors du cadre privé.



- écouter l'audio
- partager votre interprétation
- commenter la partition
- contacter l'artiste

# Deux Marches militaires

WoO 18 - 19

Ludwig van Beethoven

## 1. Allegro

Adaptation : Christian Faivre © 2017

1  $\text{♩} = 160$

Piano

6

Piano

11

Piano

15

Piano

19

Piano

*p* *f* *f*

Detailed description: This system contains measures 19 through 22. The piano part features a melody in the right hand and chords in the left hand. Measure 19 starts with a piano (*p*) dynamic. The melody has a descending eighth-note line. Measure 20 has a forte (*f*) dynamic. Measure 21 has a forte (*f*) dynamic. Measure 22 has a forte (*f*) dynamic. The left hand provides harmonic support with chords.

23

Piano

*mf* *f* *mf* *f*

Detailed description: This system contains measures 23 through 26. The piano part features a melody in the right hand and chords in the left hand. Measure 23 starts with a mezzo-forte (*mf*) dynamic. Measure 24 has a forte (*f*) dynamic. Measure 25 has a mezzo-forte (*mf*) dynamic. Measure 26 has a forte (*f*) dynamic. The left hand provides harmonic support with chords.

27

Piano

*mf* *f*

Detailed description: This system contains measures 27 through 30. The piano part features a melody in the right hand and chords in the left hand. Measure 27 starts with a mezzo-forte (*mf*) dynamic. Measure 28 has a forte (*f*) dynamic. Measure 29 has a forte (*f*) dynamic. Measure 30 has a forte (*f*) dynamic. The left hand provides harmonic support with chords.

31

Piano

*sf* *sf* *sf* *sf*

Detailed description: This system contains measures 31 through 34. The piano part features a melody in the right hand and chords in the left hand. Measure 31 starts with a sforzando (*sf*) dynamic. Measure 32 has a sforzando (*sf*) dynamic. Measure 33 has a sforzando (*sf*) dynamic. Measure 34 has a sforzando (*sf*) dynamic. The left hand provides harmonic support with chords.

35

Piano

*D.C. avec les reprises*

Detailed description: This system contains measures 35 through 38. The piano part features a melody in the right hand and chords in the left hand. Measure 35 starts with a mezzo-forte (*mf*) dynamic. Measure 36 has a mezzo-forte (*mf*) dynamic. Measure 37 has a mezzo-forte (*mf*) dynamic. Measure 38 has a mezzo-forte (*mf*) dynamic. The left hand provides harmonic support with chords.

## 2. Allegro

39 *ff* ♩ = 160

Piano

*ff* *sf*

This system contains measures 39 to 42. The music is in 4/4 time. The right hand features a melody of eighth notes, while the left hand plays a rhythmic accompaniment of eighth notes. Dynamic markings include *ff* at the beginning and *sf* in the second measure.

43 *ff*

Piano

*ff* *sf*

This system contains measures 43 to 46. The musical texture continues with eighth-note patterns in both hands. A *sf* marking appears in the second measure. The system concludes with a double bar line and repeat dots.

47

Piano

*sf* *sf*

This system contains measures 47 to 50. The right hand has a more complex melodic line with some accidentals. The left hand maintains the eighth-note accompaniment. *sf* markings are present in the third and fourth measures.

51

Piano

This system contains measures 51 to 54. The right hand features a series of chords and some melodic fragments. The left hand continues with the eighth-note accompaniment. There are accents (>) over some notes in the right hand.

55

Piano

This system contains measures 55 to 58. The right hand has a melodic line with accents (>) and some slurs. The left hand continues with the eighth-note accompaniment.

59 *sf sf sf ff sf*

Piano

63 *ff sf*

Piano

67 *p*

Piano

71 *f p*

Piano

75 *f ff* *D.C. avec reprises*

Piano