



# Gianfranco Gioia

Italie, Palermo

## Contrapunctus II from "The Art of the Fugue" BWV 1080 Bach, Johann Sebastian

### A propos de l'artiste

Né le 16 août 1971 à Palerme, il est saxophoniste, clarinettiste et compositeur. Pour contacter visite <http://www.gianfrancogioia.it>

Toutes les compositions de Gianfranco Gioia sont couvertes par un copyright et sont déposés à la Società Italiana Editori Autori (SIAE)

**Qualification :** Clarinette, saxophone

**Sociétaire :** SIAE

**Page artiste :** [https://www.free-scores.com/partitions\\_gratuites\\_gianfranco-gioia.htm](https://www.free-scores.com/partitions_gratuites_gianfranco-gioia.htm)

### A propos de la pièce



**Titre :** Contrapunctus II from "The Art of the Fugue" BWV 1080  
**Compositeur :** Bach, Johann Sebastian  
**Arrangeur :** Gioia, Gianfranco  
**Droit d'auteur :** Domaine Public  
**Instrumentation :** Quatuor de saxophones  
**Style :** Baroque

Gianfranco Gioia sur [free-scores.com](https://www.free-scores.com)



Cette partition ne fait pas partie du domaine public. Merci de contacter l'artiste pour toute utilisation hors du cadre privé.



- écouter l'audio
- partager votre interprétation
- commenter la partition
- contacter l'artiste

# Art of the Fugue

Contrapunctus II

J.S. Bach, BWV 1080  
Trascrizione di Gianfranco Gioia

Sax soprano

Sax contralto

Sax tenore

Sax baritono

7

Sax S.

Sax C.

Sax T.

Sax B.

12

Sax S.

Sax C.

Sax T.

Sax B.

Art of the Fugue

2

17

Sax S.

Sax C.

Sax T.

Sax B.

This system of music covers measures 17 through 21. It features four staves for saxophones: Soprano (Sax S.), Contralto (Sax C.), Tenor (Sax T.), and Baritone (Sax B.). The key signature is one sharp (F#). The Soprano saxophone part begins with a long note in measure 17, followed by a melodic line in measure 18, and then rests in measures 19 and 20. The Contralto saxophone part has a rhythmic eighth-note pattern in measure 17, followed by a melodic line in measure 18, and then rests in measures 19 and 20. The Tenor saxophone part has a rhythmic eighth-note pattern in measure 17, followed by a melodic line in measure 18, and then rests in measures 19 and 20. The Baritone saxophone part has a long note in measure 17, followed by a melodic line in measure 18, and then rests in measures 19 and 20.

22

Sax S.

Sax C.

Sax T.

Sax B.

This system of music covers measures 22 through 25. It features four staves for saxophones: Soprano (Sax S.), Contralto (Sax C.), Tenor (Sax T.), and Baritone (Sax B.). The key signature is one sharp (F#). The Soprano saxophone part has a rhythmic eighth-note pattern in measure 22, followed by a melodic line in measure 23, and then rests in measures 24 and 25. The Contralto saxophone part has a long note in measure 22, followed by a melodic line in measure 23, and then rests in measures 24 and 25. The Tenor saxophone part has a long note in measure 22, followed by a melodic line in measure 23, and then rests in measures 24 and 25. The Baritone saxophone part has a long note in measure 22, followed by a melodic line in measure 23, and then rests in measures 24 and 25.

26

Sax S.

Sax C.

Sax T.

Sax B.

This system of music covers measures 26 through 29. It features four staves for saxophones: Soprano (Sax S.), Contralto (Sax C.), Tenor (Sax T.), and Baritone (Sax B.). The key signature is one sharp (F#). The Soprano saxophone part has a long note in measure 26, followed by a melodic line in measure 27, and then rests in measures 28 and 29. The Contralto saxophone part has a long note in measure 26, followed by a melodic line in measure 27, and then rests in measures 28 and 29. The Tenor saxophone part has a long note in measure 26, followed by a melodic line in measure 27, and then rests in measures 28 and 29. The Baritone saxophone part has a long note in measure 26, followed by a melodic line in measure 27, and then rests in measures 28 and 29.

30

Sax S.

Sax C.

Sax T.

Sax B.

34

Sax S.

Sax C.

Sax T.

Sax B.

39

Sax S.

Sax C.

Sax T.

Sax B.

Art of the Fugue

4

43

Sax S.

Sax C.

Sax T.

Sax B.

This system of music covers measures 43 to 47. It features four staves: Saxophone Soprano (Sax S.), Saxophone Contralto (Sax C.), Saxophone Tenor (Sax T.), and Saxophone Bass (Sax B.). The key signature is one sharp (F#). The Sax S. part begins with a melodic line marked with a fermata. The Sax C. part has a more active, rhythmic line. The Sax T. part provides harmonic support with a steady eighth-note pattern. The Sax B. part is mostly silent, indicated by a whole rest.

48

Sax S.

Sax C.

Sax T.

Sax B.

This system of music covers measures 48 to 52. The Sax S. part continues its melodic line with some chromaticism. The Sax C. part has a more active, rhythmic line. The Sax T. part provides harmonic support with a steady eighth-note pattern. The Sax B. part is mostly silent, indicated by a whole rest.

53

Sax S.

Sax C.

Sax T.

Sax B.

This system of music covers measures 53 to 57. The Sax S. part continues its melodic line with some chromaticism. The Sax C. part has a more active, rhythmic line. The Sax T. part provides harmonic support with a steady eighth-note pattern. The Sax B. part is mostly silent, indicated by a whole rest.

58

Sax S.

Sax C.

Sax T.

Sax B.

63

Sax S.

Sax C.

Sax T.

Sax B.

68

Sax S.

Sax C.

Sax T.

Sax B.

Art of the Fugue

6

72

Sax S.

Sax C.

Sax T.

Sax B.

77

Sax S.

Sax C.

Sax T.

Sax B.

81

Sax S.

Sax C.

Sax T.

Sax B.

Partitura


# Art of the Fugue

Contrapunctus II

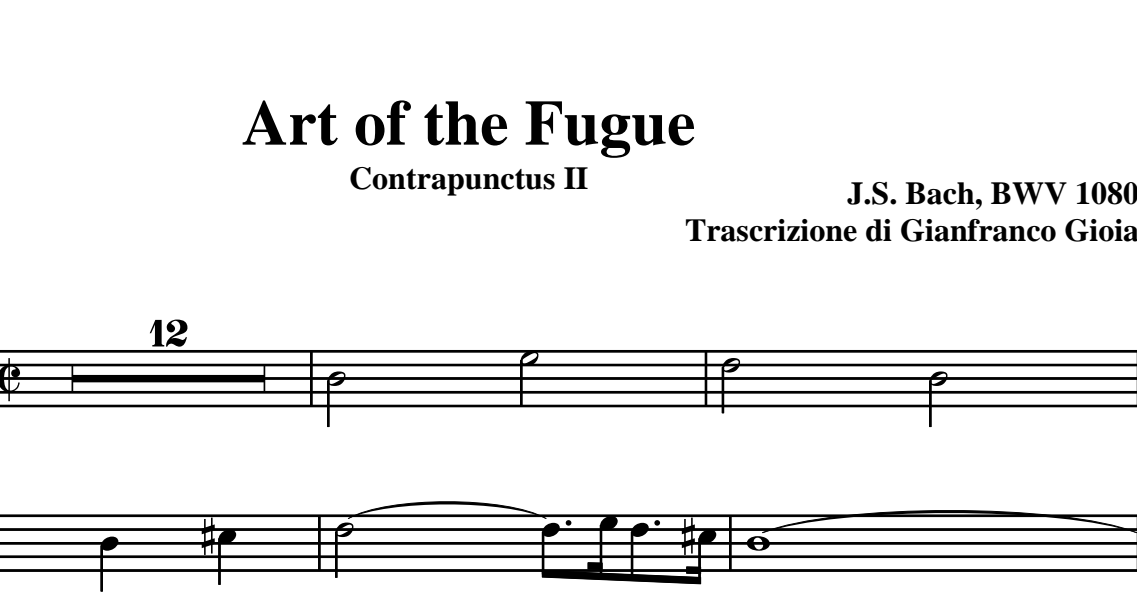
J.S. Bach, BWV 1080

Trascrizione di Gianfranco Gioia

Sax soprano



Sax S.



Sax S.



Sax S.



Sax S.



Sax S.



Sax S.



Sax S.




Sax S.



Sax S.



Sax S.





Art of the Fugue

2  
52

Sax S.

58

Sax S.

62

Sax S.

66

Sax S.

70

Sax S.

73

Sax S.

77

Sax S.

80

Sax S.

84

Sax S.

Partitura

# Art of the Fugue

Contrapunctus II

J.S. Bach, BWV 1080

Trascrizione di Gianfranco Gioia

Sax contralto

8

Sax C.

13

Sax C.

18

Sax C.

23

Sax C.

28

Sax C.

33

Sax C.

38

Sax C.

42

Sax C.

47

Sax C.

53

Sax C.

58

Art of the Fugue

2  
63

Sax C.



69

Sax C.



74

Sax C.



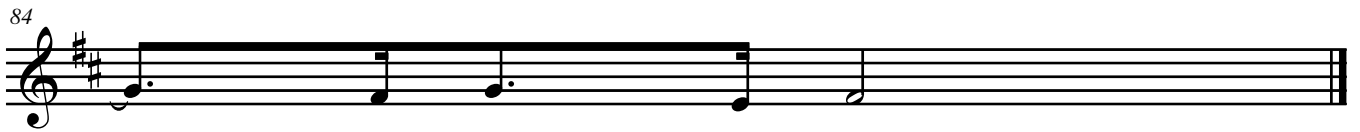
79

Sax C.



84

Sax C.



Partitura

# Art of the Fugue

Contrapunctus II

J.S. Bach, BWV 1080

Trascrizione di Gianfranco Gioia

Sax tenore



Sax T.



Sax T.



Sax T.



Sax T.



Sax T.



Sax T.



Sax T.



Sax T.



Sax T.



Sax T.



Art of the Fugue

2  
61

Sax T.

Musical staff for Saxophone Tenor, measures 61-65. The staff is in treble clef with a key signature of one sharp (F#). It contains a sequence of notes and rests, including a triplet of eighth notes in measure 64.

66

Sax T.

Musical staff for Saxophone Tenor, measures 66-72. The staff is in treble clef with a key signature of one sharp (F#). It features a double bar line in measure 66, a fermata over a half note in measure 67, and a slur over a group of notes in measure 72.

73

Sax T.

Musical staff for Saxophone Tenor, measures 73-77. The staff is in treble clef with a key signature of one sharp (F#). It contains a series of eighth and sixteenth notes, with a slur over measures 73-74 and another slur over measures 75-77.

78

Sax T.

Musical staff for Saxophone Tenor, measures 78-82. The staff is in treble clef with a key signature of one sharp (F#). It features a series of eighth and sixteenth notes, with a slur over measures 78-80 and another slur over measures 81-82.

83

Sax T.

Musical staff for Saxophone Tenor, measures 83-87. The staff is in treble clef with a key signature of one sharp (F#). It contains a series of eighth and sixteenth notes, with a slur over measures 83-84 and another slur over measures 85-86. The staff ends with a double bar line.

Partitura

# Art of the Fugue

Contrapunctus II

J.S. Bach, BWV 1080

Trascrizione di Gianfranco Gioia

Sax baritono



Musical staff for Sax baritono, measures 1-4. The staff is in treble clef with a key signature of two sharps (F# and C#) and a common time signature. It begins with a whole note G4, followed by a half note A4, a quarter note B4, and a quarter note C5. The final measure contains a half note G4 and a half note F#4.

Sax B. 5



Musical staff for Sax B., measures 5-8. Measures 5-6 contain a sixteenth-note triplet: G4, A4, B4. Measure 7 contains a sixteenth-note triplet: C5, B4, A4. Measure 8 contains a quarter note G4 and a quarter note F#4.

Sax B. 9



Musical staff for Sax B., measures 9-12. Measures 9-10 contain a sixteenth-note triplet: G4, A4, B4. Measure 11 contains a sixteenth-note triplet: C5, B4, A4. Measure 12 contains a quarter note G4 and a quarter note F#4.

Sax B. 13



Musical staff for Sax B., measures 13-17. Measures 13-14 contain a sixteenth-note triplet: G4, A4, B4. Measure 15 contains a sixteenth-note triplet: C5, B4, A4. Measure 16 contains a quarter note G4 and a quarter note F#4. Measure 17 contains a quarter note G4 and a quarter note F#4.

Sax B. 18



Musical staff for Sax B., measures 18-23. Measures 18-19 contain a sixteenth-note triplet: G4, A4, B4. Measure 20 contains a sixteenth-note triplet: C5, B4, A4. Measure 21 contains a quarter note G4 and a quarter note F#4. Measure 22 contains a quarter note G4 and a quarter note F#4. Measure 23 contains a quarter note G4 and a quarter note F#4.

Sax B. 24



Musical staff for Sax B., measures 24-28. Measures 24-25 contain a sixteenth-note triplet: G4, A4, B4. Measure 26 contains a sixteenth-note triplet: C5, B4, A4. Measure 27 contains a quarter note G4 and a quarter note F#4. Measure 28 contains a quarter note G4 and a quarter note F#4.

Sax B. 29




Musical staff for Sax B., measures 29-34. Measures 29-30 contain a whole rest. Measure 31 contains a whole note G4. Measure 32 contains a whole note A4. Measure 33 contains a whole note B4. Measure 34 contains a whole note C5.

Sax B. 35



Musical staff for Sax B., measures 35-40. Measures 35-36 contain a whole rest. Measure 37 contains a whole note G4. Measure 38 contains a whole note A4. Measure 39 contains a whole note B4. Measure 40 contains a whole note C5. A fermata is placed over measure 39.

Sax B. 41



Musical staff for Sax B., measures 41-46. Measures 41-42 contain a whole rest. Measure 43 contains a whole note G4. Measure 44 contains a whole note A4. Measure 45 contains a whole note B4. Measure 46 contains a whole note C5. A fermata is placed over measure 45.

Sax B. 53



Musical staff for Sax B., measures 53-58. Measures 53-54 contain a whole note G4. Measure 55 contains a whole note A4. Measure 56 contains a whole note B4. Measure 57 contains a whole note C5. Measure 58 contains a whole note G4.

Sax B. 59



Musical staff for Sax B., measures 59-64. Measures 59-60 contain a whole rest. Measure 61 contains a whole note G4. Measure 62 contains a whole note A4. Measure 63 contains a whole note B4. Measure 64 contains a whole note C5.

Art of the Fugue

2  
65

Sax B.

Musical staff for Saxophone B, measures 65-70. The staff is in treble clef with a key signature of two sharps (F# and C#). The music begins with a half note G4, followed by a quarter note A4, and a quarter note B4. A slur covers measures 66 and 67, containing eighth notes: G4, A4, B4, C5, B4, A4, G4. Measure 68 contains a quarter note G4, a quarter note A4, and a quarter note B4. Measure 69 contains a quarter note C5, a quarter note B4, and a quarter note A4. Measure 70 contains a quarter note G4, a quarter note F#4, and a half note G4.

70

Sax B.

Musical staff for Saxophone B, measures 70-76. The staff is in treble clef with a key signature of two sharps (F# and C#). Measure 70 contains a quarter note G4, a quarter note F#4, and a half note G4. Measure 71 contains a quarter note A4, a quarter note B4, and a quarter note C5. Measure 72 contains a quarter note B4, a quarter note A4, and a quarter note G4. Measure 73 contains a quarter note F#4, a quarter note E4, and a quarter note D4. Measure 74 contains a quarter note C4, a quarter note B3, and a quarter note A3. Measure 75 contains a quarter note G3, a quarter note F#3, and a quarter note E3. Measure 76 contains a quarter note D3, a quarter note C3, and a half note D3.

76

Sax B.

Musical staff for Saxophone B, measures 76-81. The staff is in treble clef with a key signature of two sharps (F# and C#). Measure 76 contains a quarter note D3, a quarter note C3, and a half note D3. Measure 77 contains a quarter note E3, a quarter note D3, and a quarter note C3. Measure 78 contains a quarter note B3, a quarter note A3, and a quarter note G3. Measure 79 contains a quarter note F#3, a quarter note E3, and a quarter note D3. Measure 80 contains a quarter note C3, a quarter note B3, and a quarter note A3. Measure 81 contains a quarter note G3, a quarter note F#3, and a quarter note E3.

81

Sax B.

Musical staff for Saxophone B, measures 81-86. The staff is in treble clef with a key signature of two sharps (F# and C#). Measure 81 contains a quarter note G3, a quarter note F#3, and a quarter note E3. Measure 82 contains a quarter note D3, a quarter note C3, and a quarter note B2. Measure 83 contains a quarter note A2, a quarter note G2, and a quarter note F#2. Measure 84 contains a quarter note E2, a quarter note D2, and a quarter note C2. Measure 85 contains a quarter note B1, a quarter note A1, and a quarter note G1. Measure 86 contains a quarter note F#1, a quarter note E1, and a half note F#1.