



Gustav Anderson

États-Unis, Norwalk

NEW PLANS

A propos de l'artiste

A ROSE BY ANY OTHER NAME....Hello....in order to keep my sheet music separate from my MP3 music on Freescores I, LEONARD ANDERSON, have established this second account....GUSTAV is my middle name....to hear my MP3's click on LEONARD ANDERSON under INTERPRETER

Qualification : BA, MA, Ed.D, Ph.D in music and education

Page artiste : https://www.free-scores.com/partitions_gratuites_gustavanderson.htm

A propos de la pièce



Titre : NEW PLANS

Compositeur : Anderson, Gustav

Arrangeur : Anderson, Gustav

Droit d'auteur : Gustav Anderson (c) All Rights Preserved

Editeur : Anderson, Gustav

Instrumentation : Jazz Quartet

Style : Jazz

Gustav Anderson sur [free-scores.com](https://www.free-scores.com)



- écouter l'audio
- partager votre interprétation
- commenter la partition
- contacter l'artiste

NEW PLANS

1a

G6 Abdim Am7 D13 G6 Em7 Am7 D9

5a

F#m7b5 B7b9 Em7 Am7 D13 G6 D13

G6 Abdim Am7 D13 G6 Em7 Am7 D9

F#m7b5 B7b9 Em7 Am7 D13 G6

21b

D6 A9 Am7 D13 D13

G6 Abdim Am7 D13 G6 Em7 Am7 D9

22a

F#m7b5 B7b9 Em7 Am7 D13 G6

Detailed description: This is a guitar score for the piece 'New Plans'. It is written in 4/4 time with a key signature of one sharp (F#). The score consists of ten staves of music. The first staff is labeled '1a' and contains a melodic line with a starting chord of GMaj7. The second staff is labeled '5a' and contains a melodic line with a starting chord of G6. The third staff contains a melodic line with a starting chord of F#m7b5. The fourth staff is labeled '21b' and contains a melodic line with a starting chord of B6. The fifth staff contains a melodic line with a starting chord of D6. The sixth staff is labeled '22a' and contains a melodic line with a starting chord of G6. The seventh staff contains a melodic line with a starting chord of F#m7b5. The eighth staff contains a melodic line with a starting chord of F#m7b5. The ninth staff contains a melodic line with a starting chord of F#m7b5. The tenth staff contains a melodic line with a starting chord of F#m7b5. The score includes various guitar chords such as GMaj7, E7, Am7, Ab9#11, G6, Abdim, Am7, D13, Em7, D9, F#m7b5, B7b9, C#m7, F#13, A9, and B6. The melodic line features eighth and sixteenth notes, rests, and triplets. The key signature is one sharp (F#).

G6 Abdim Am7 D13 G6 Em7 Am7 D9

5a (2)

F#m7b5 B7b9 Em7 Am7 D13 G6 D13

G6 Abdim Am7 D13 G6 Em7 Am7 D9

F#m7b5 B7b9 Em7 Am7 D13 G6

B6 C#m7 F#13 B6

21b (2)

D6 A9 Am7 D13 D13

G6 Abdim Am7 D13 G6 Em7 Am7 D9

29a (2)

F#m7b5 B7b9 Em7 Am7 D13 G6

G6 Abdim Am7 D13 G6 Em7 Am7 D9

5a (3)

F#m7b5 B7b9 Em7 Am7 D13 G6 D13

G6 Abdim Am7 D13 G6 Em7 Am7 D9

F#m7b5 B7b9 Em7 Am7 D13 G6

B6 C#m7 F#13 B6

21b (3)

D6 A9 Am7 D13 D13

2b

G6 Abdim Am7 D13 G6 Em7 Am7 D9

29a (3)

F#m7b5 B7b9 Em7 Am7 D13 G6

G6 Abdim Am7 D13 G6 Em7 Am7 D9

3 3

5a (4)

F#m7b5 B7b9 Em7 Am7 D13 G6 D13

7

G6 Abdim Am7 D13 G6 Em7 Am7 D9

3

F#m7b5 B7b9 Em7 Am7 D13 G6

3

B6 C#m7 F#13 B6

D6 A9 Am7 D13 D13

G6 Abdim Am7 D13 G6 Em7 Am7 D9

F#m7b5 B7b9 Em7 Am7 D13 G6

G6 Abdim Am7 D13 G6 Em7 Am7 D9

F#m7b5 B7b9 Em7 Am7 D13 G6 D13

G6 Abdim Am7 D13 G6 Em7 Am7 D9

F#m7b5 B7b9 Em7 Am7 D13 G6

B6 C#m7 F#13 B6

D6 A9 Am7 D13 D13

G6 Abdim Am7 D13 G6 Em7 Am7 D9

29a (5)

F#m7b5 B7b9 Em7 Am7 D13 G6

G6 Abdim Am7 D13 G6 Em7 Am7 D9

5a (6)

F#m7b5 B7b9 Em7 Am7 D13 G6 D13

G6 Abdim Am7 D13 G6 Em7 Am7 D9

F#m7b5 B7b9 Em7 Am7 D13 G6

B6 C#m7 F#13 B6

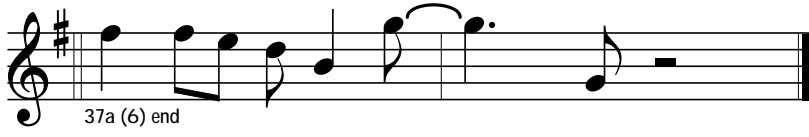
21b (6)

D6 A9 Am7 D13 D13

G6 Abdim Am7 D13 G6 Em7 Am7 D9

29a (6)

F#m7b5 B7b9 Em7 Am7 D13 G6



37a (6) end