



Gustav Anderson

États-Unis, Norwalk

MAKIS GREEK JAMBALAYA

A propos de l'artiste

A ROSE BY ANY OTHER NAME....Hello....in order to keep my sheet music separate from my MP3 music on Freescores I, LEONARD ANDERSON, have established this second account....GUSTAV is my middle name....to hear my MP3's click on LEONARD ANDERSON under INTERPRETER

Qualification : BA, MA, Ed.D, Ph.D in music and education

Page artiste : https://www.free-scores.com/partitions_gratuites_gustavanderson.htm

A propos de la pièce



Titre : MAKIS GREEK JAMBALAYA

Compositeur : Anderson, Gustav

Arrangeur : Anderson, Gustav

Droit d'auteur : Copyright © Gustav Anderson

Editeur : Anderson, Gustav

Instrumentation : Fiddle tune : Violin, Mandolin, Flute, Guitar, Banjo

Style : Country - Bluegrass

Gustav Anderson sur [free-scores.com](https://www.free-scores.com)



- écouter l'audio
- partager votre interprétation
- commenter la partition
- contacter l'artiste

MAKIS GREEK JAMBALAYA

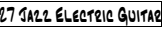
LA

C6


G7sus


C6


G7sus

MELODY  JAZZ ELECTRIC GUITAR

SOLOIST

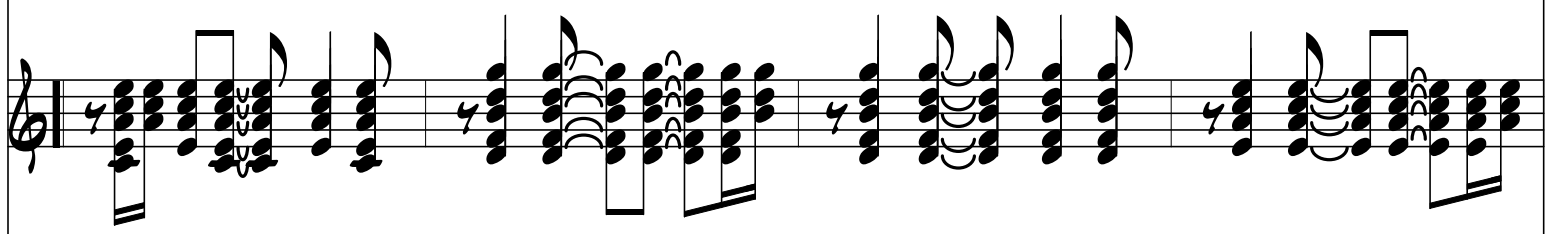
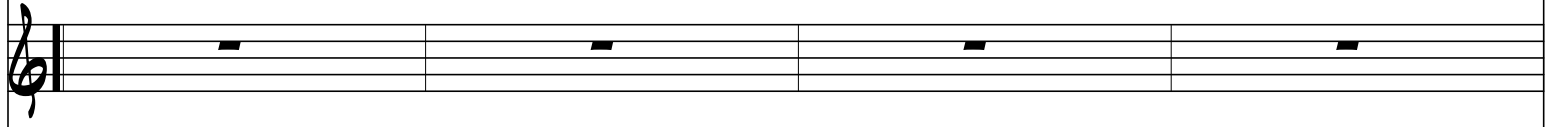
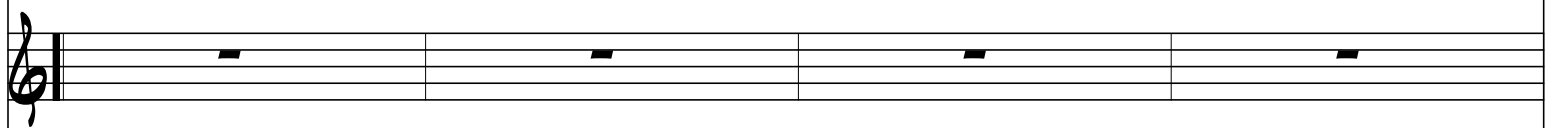
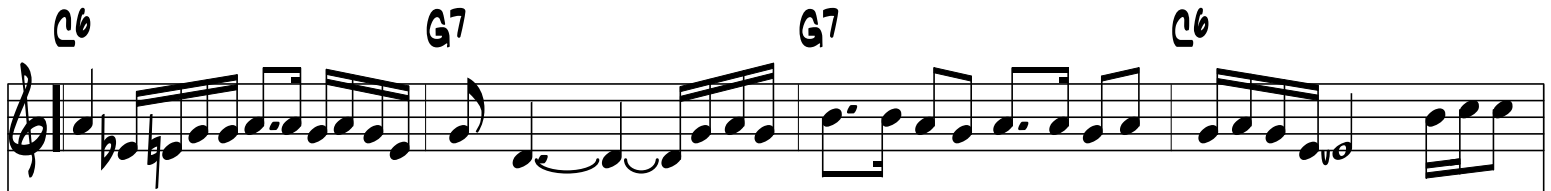
STRINGS  FIDDLE

GUITAR  NYLON STRING GUITAR

PIANO  BANCO

free-scores.com

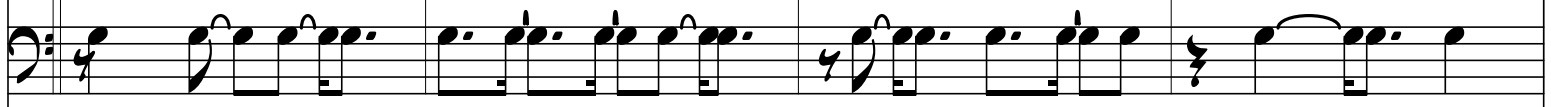
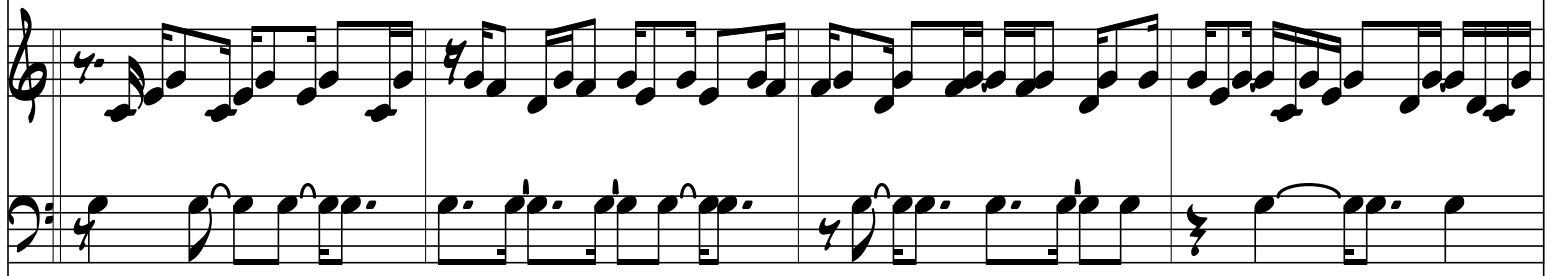
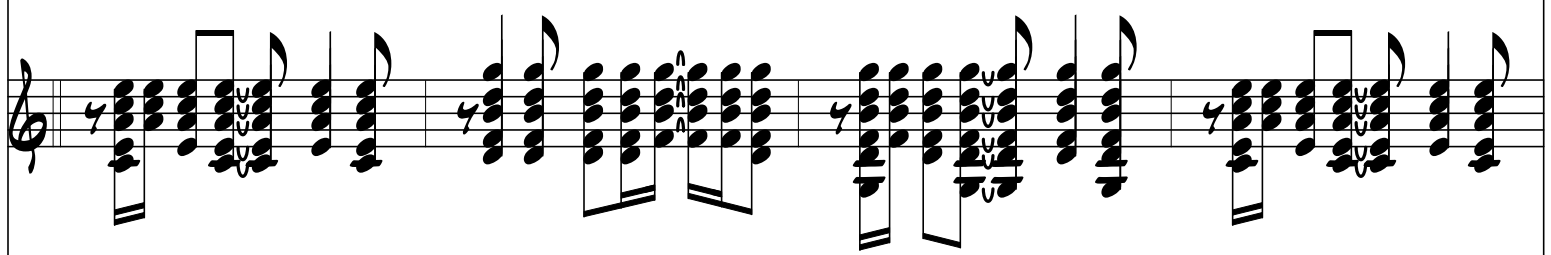
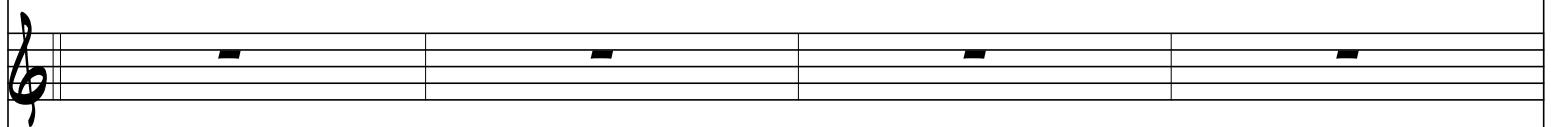
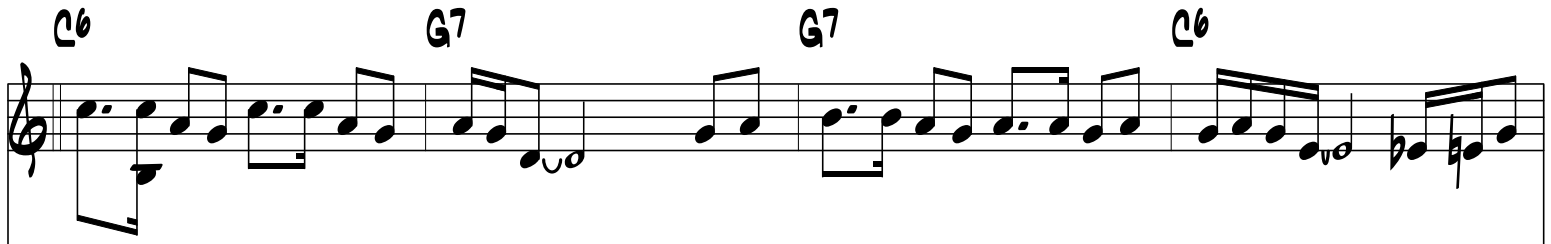
C6 G7 G7 C6



free-scores.com MAKIS GREEK JAMBALAYA - PAGE 2

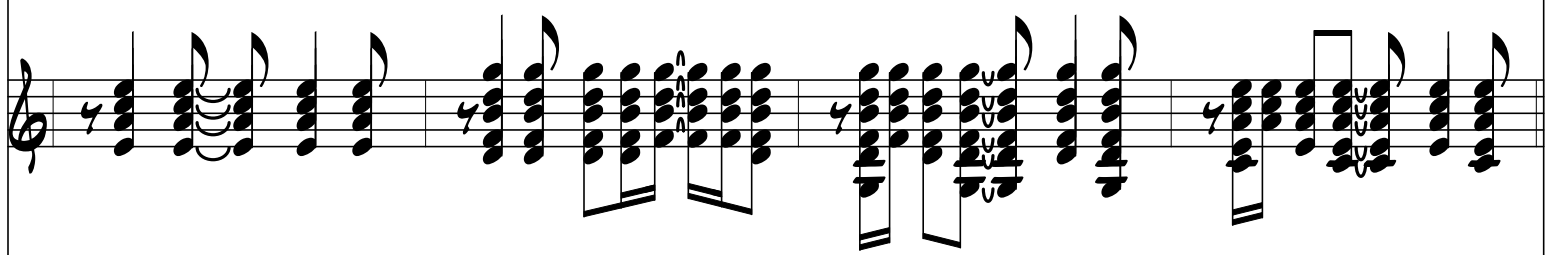
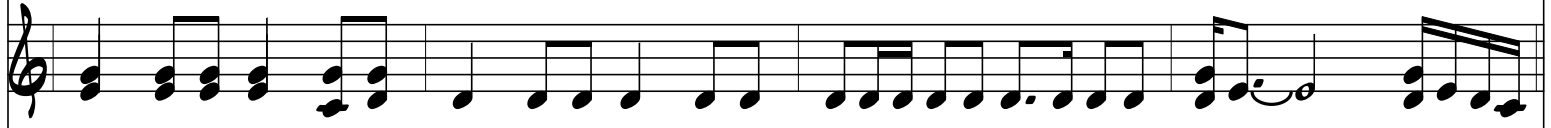
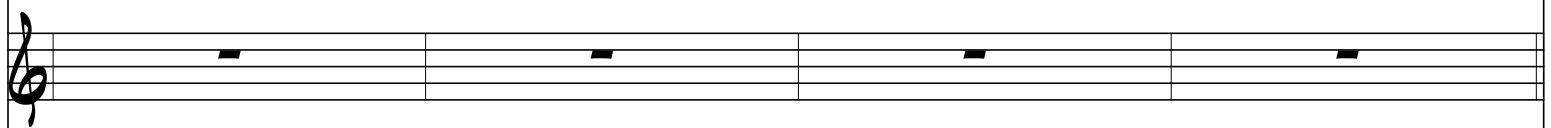
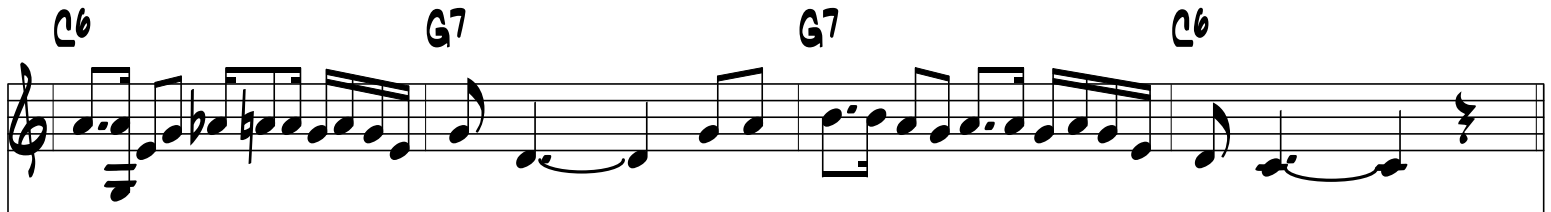
C6 G7 G7 C6

C6 G7 G7 C6



free-scores.com MAKIS GREEK TAMBALAYA - PAGE 4

C6 G7 G7 C6

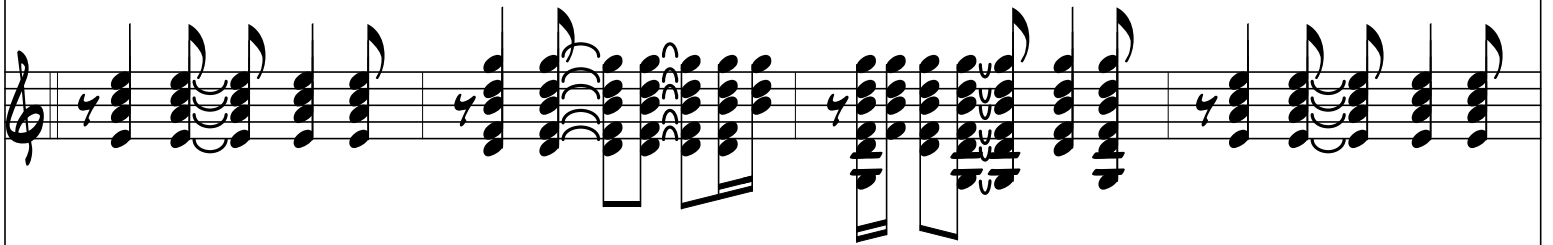
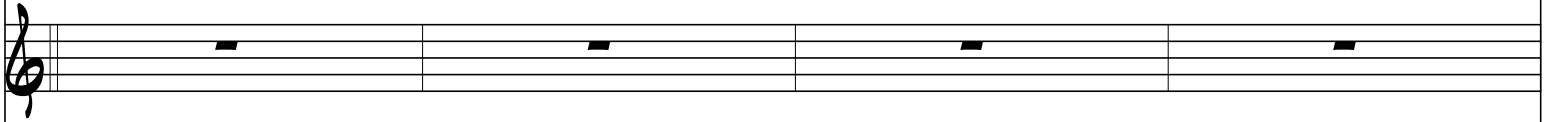
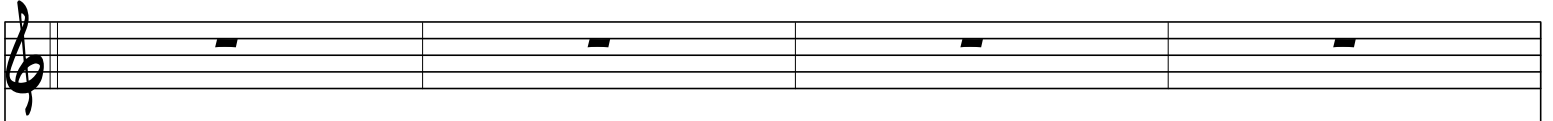


free-scores.com MAKIS GREEK TAMBALAYA - PAGE 5

C6

G7

C6



C6

G7

C6

Empty treble clef staff with four measures of rests.

Melodic line in treble clef with eighth and sixteenth notes.

Empty treble clef staff with four measures of rests.

Chordal accompaniment in treble clef with chords and eighth notes.

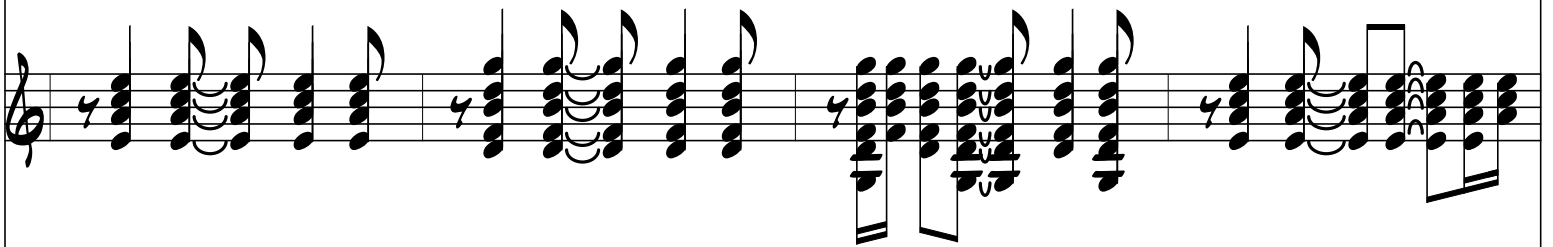
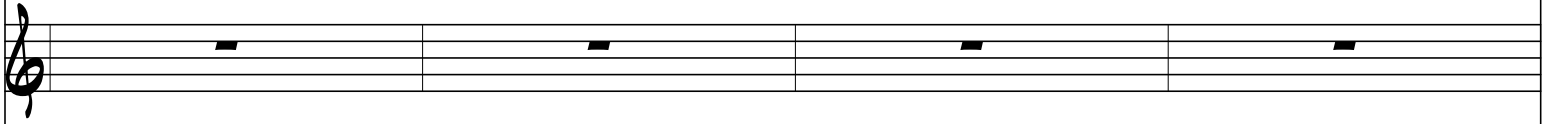
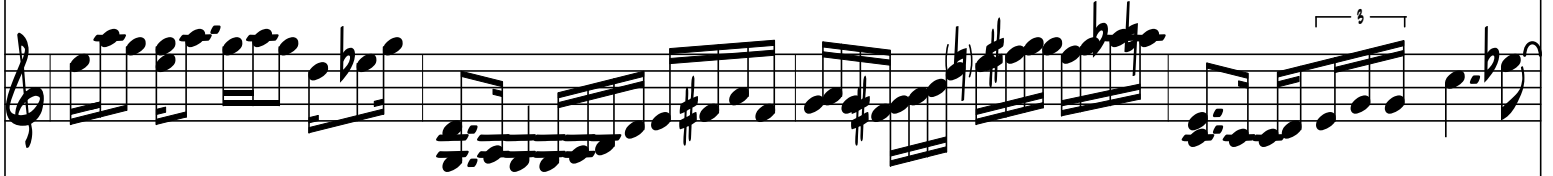
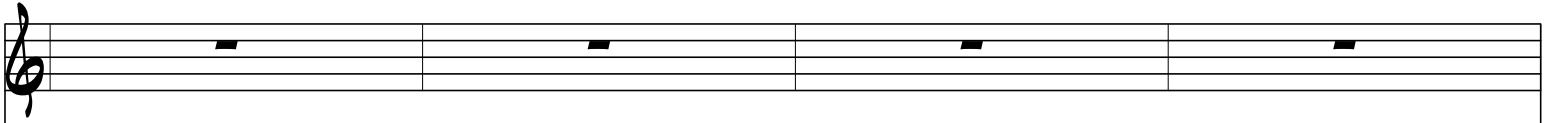
Chordal accompaniment in treble and bass clefs with chords and eighth notes.

Bass line in bass clef with quarter notes.

C6

G7

C6



C6

G7

C6

An empty treble clef staff with a key signature of one flat (Bb) and a common time signature (C).

A melodic line in treble clef, starting with a C6 chord. It features a sequence of eighth notes and sixteenth notes, including a triplet of eighth notes. The line concludes with a G7 chord.

An empty treble clef staff with a key signature of one flat (Bb) and a common time signature (C).

Harmonic accompaniment in treble clef, consisting of chords and arpeggiated figures. It includes a triplet of eighth notes in the first measure and various chord voicings throughout the section.

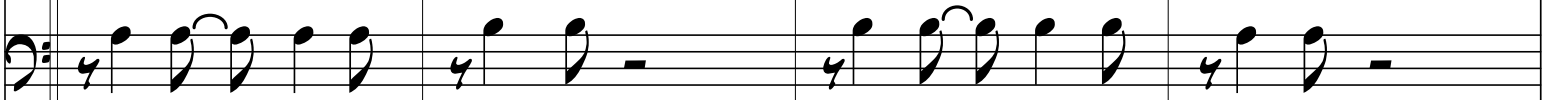
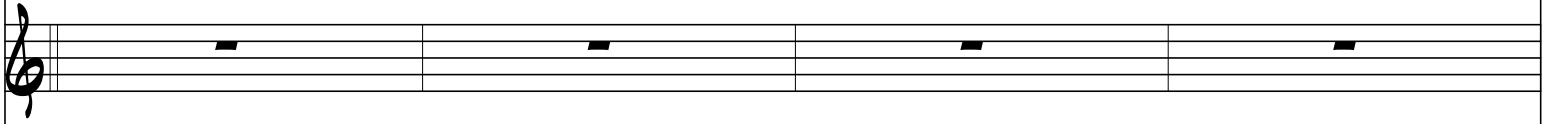
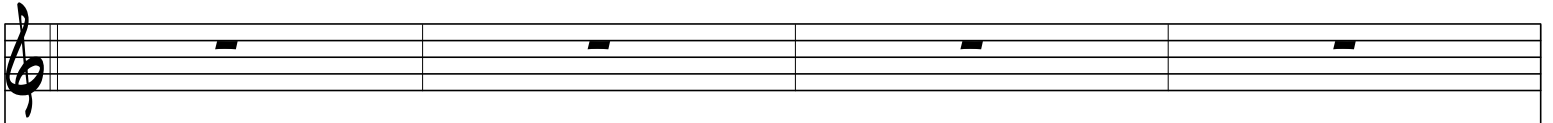
Harmonic accompaniment in treble and bass clefs. The treble clef part features chords and arpeggiated figures, while the bass clef part provides a simple bass line with eighth notes.

A bass line in bass clef, consisting of a simple sequence of eighth notes.

C6

G7

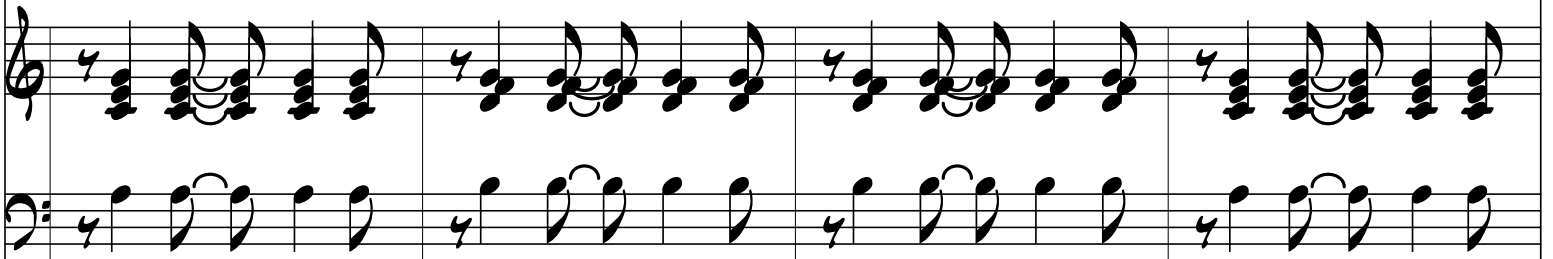
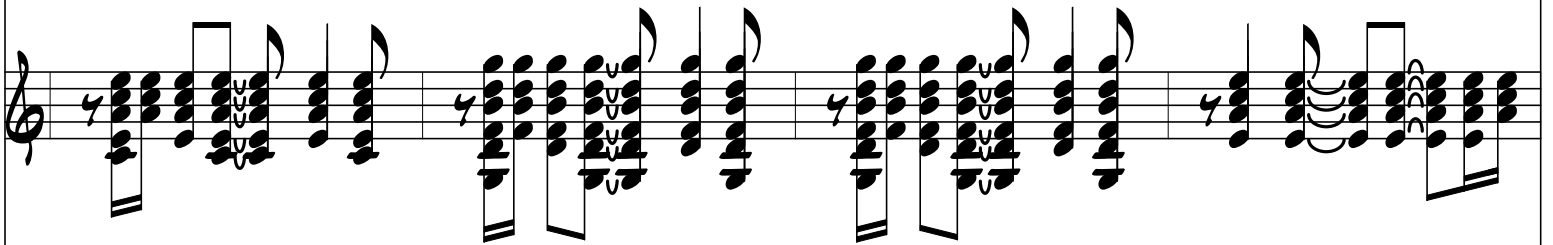
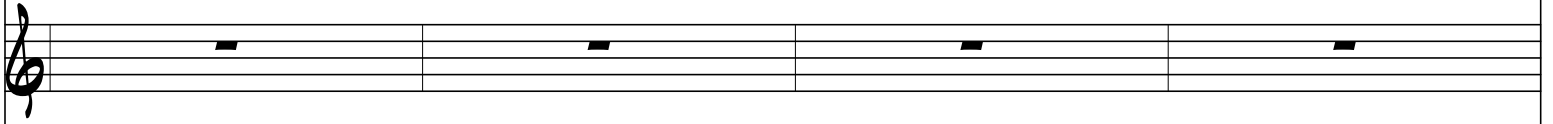
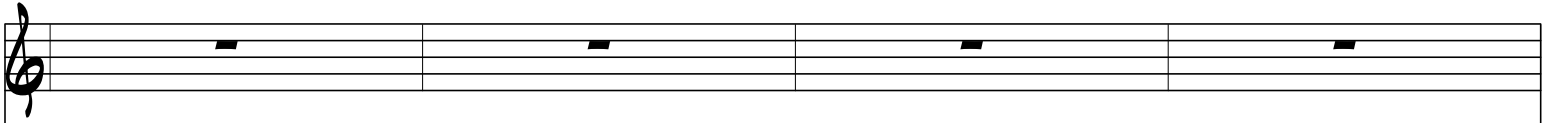
C6



C6

G7

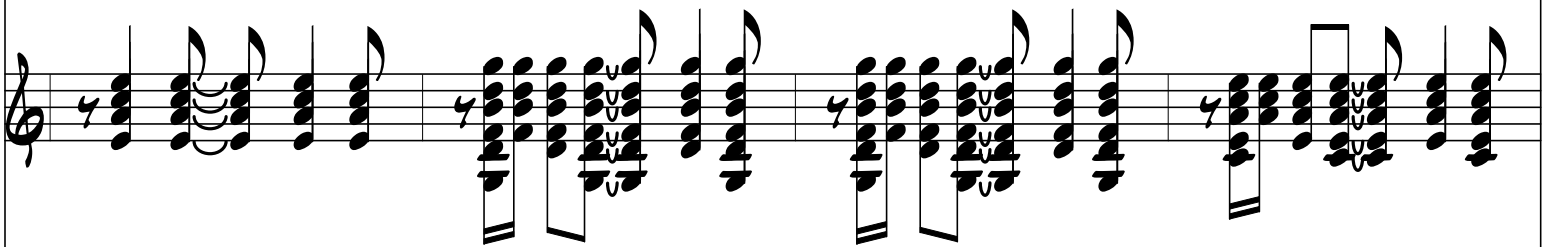
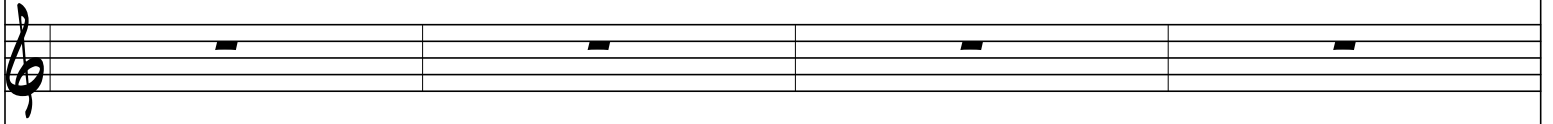
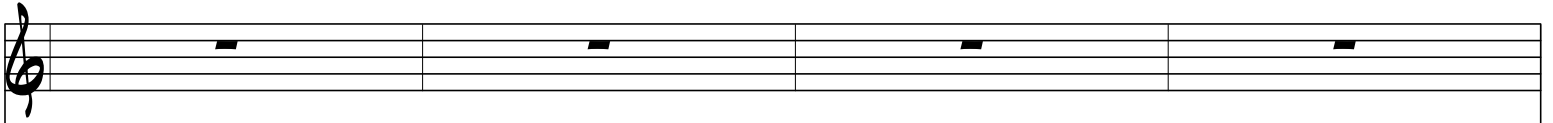
C6



C6

G7

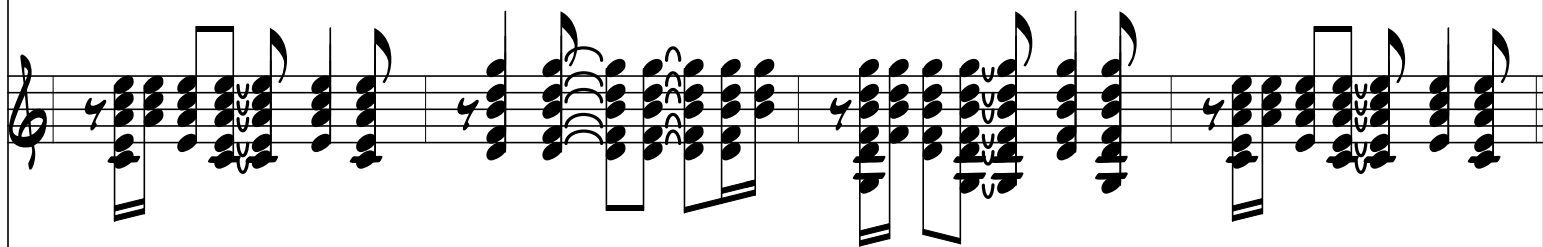
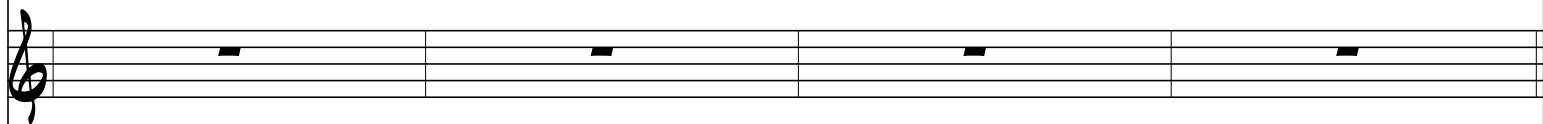
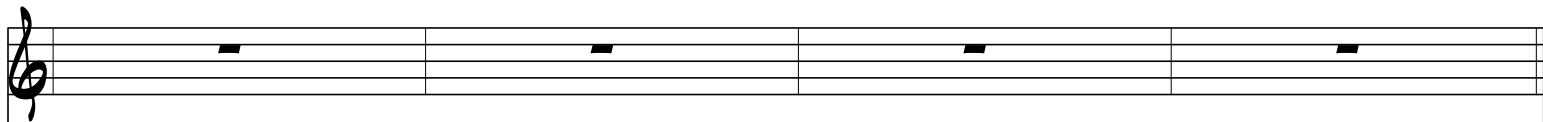
C6



C6

G7

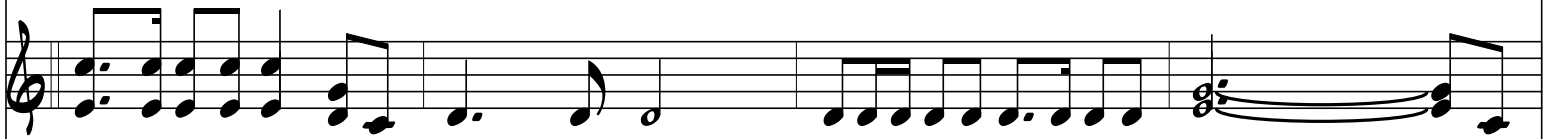
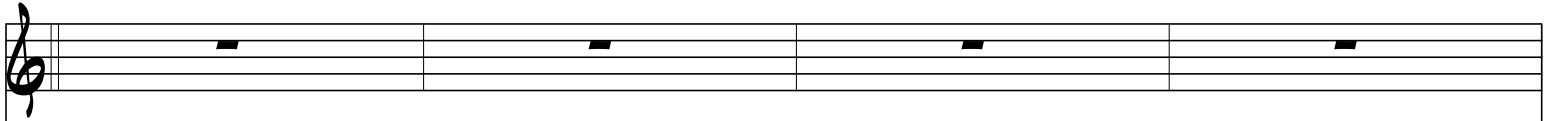
C6



C6

G7

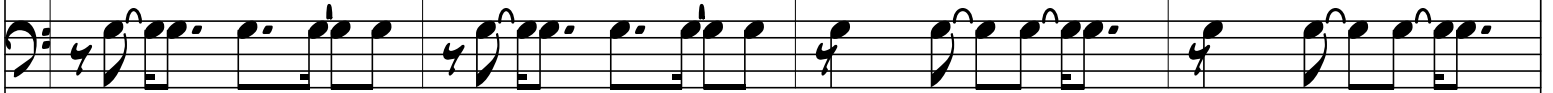
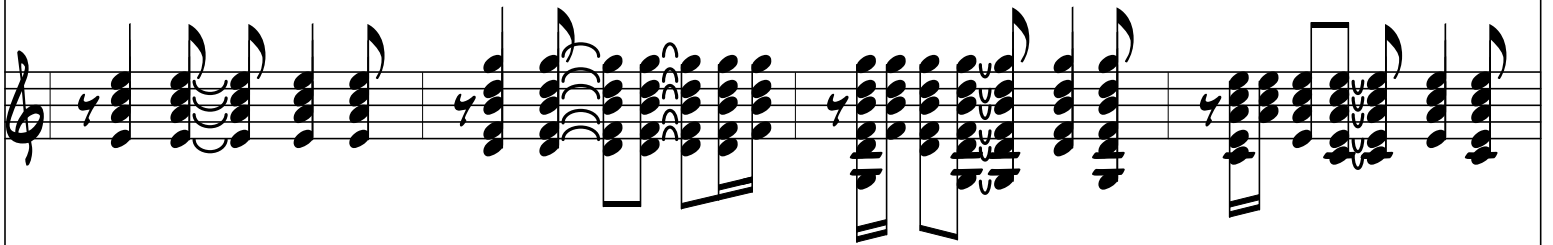
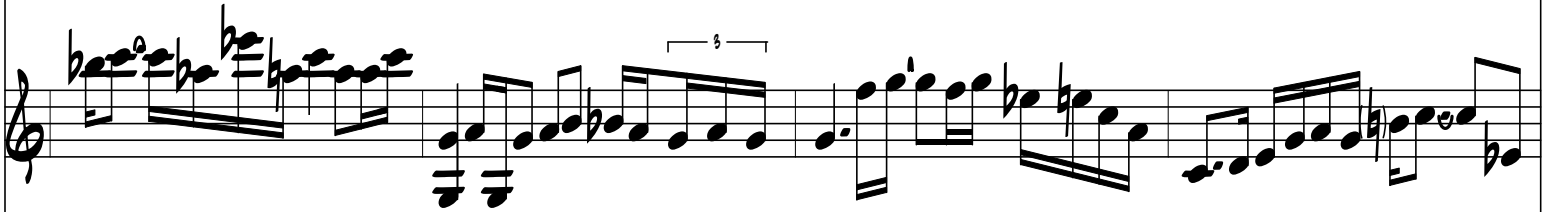
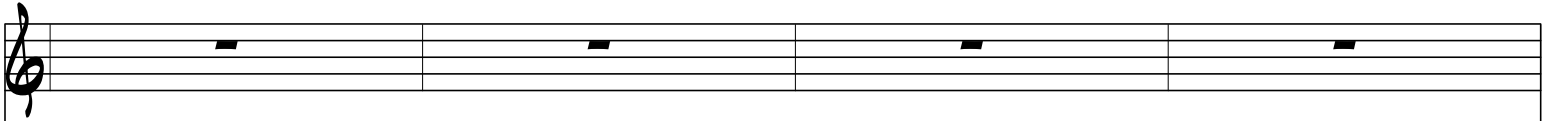
C6



C6

G7

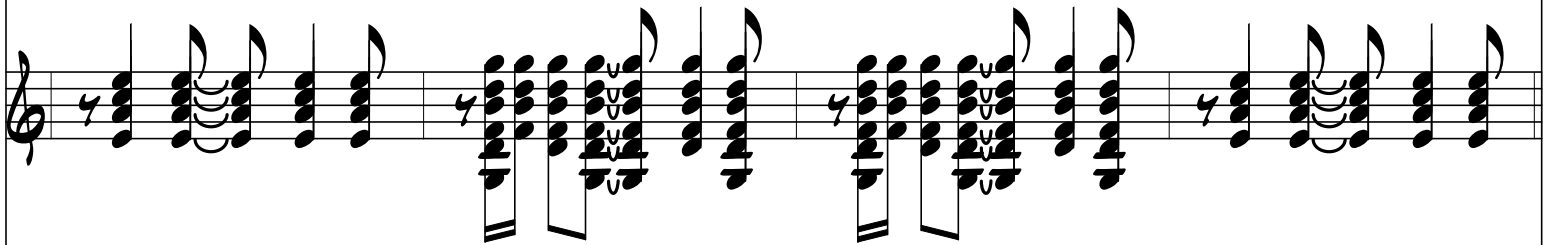
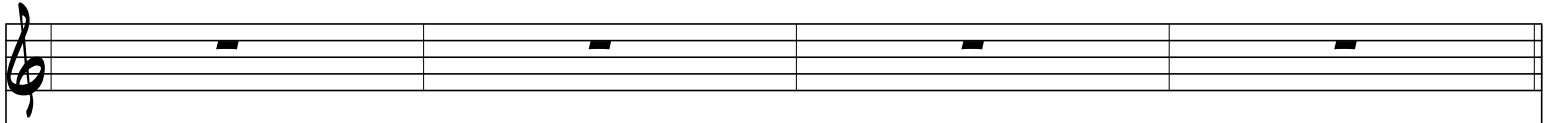
C6



C6

G7

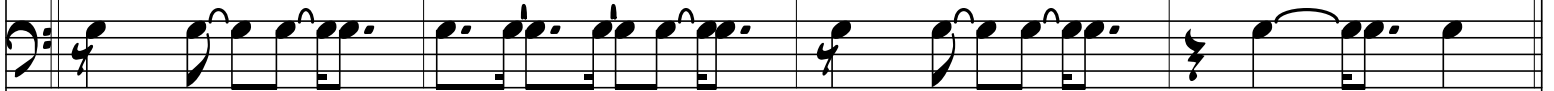
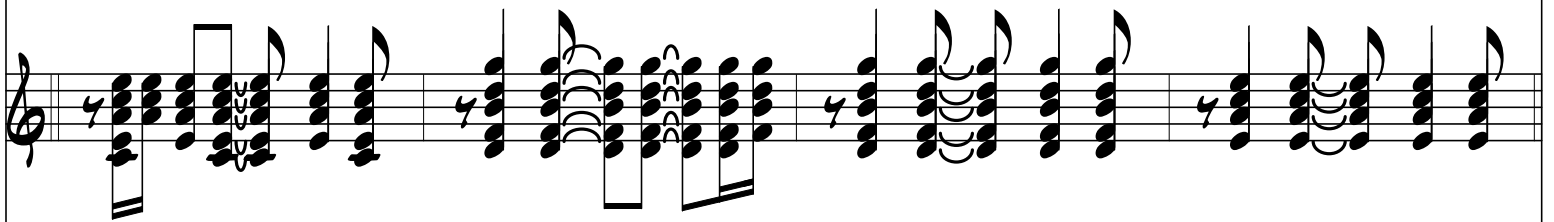
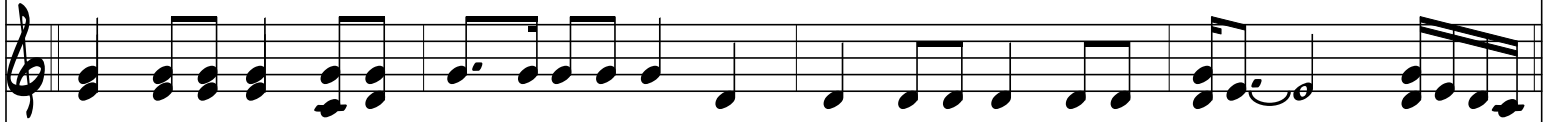
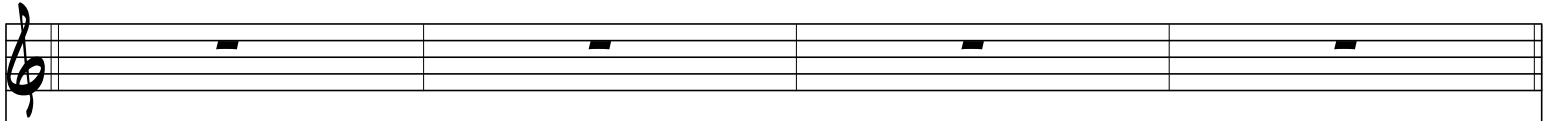
C6



C6

G7

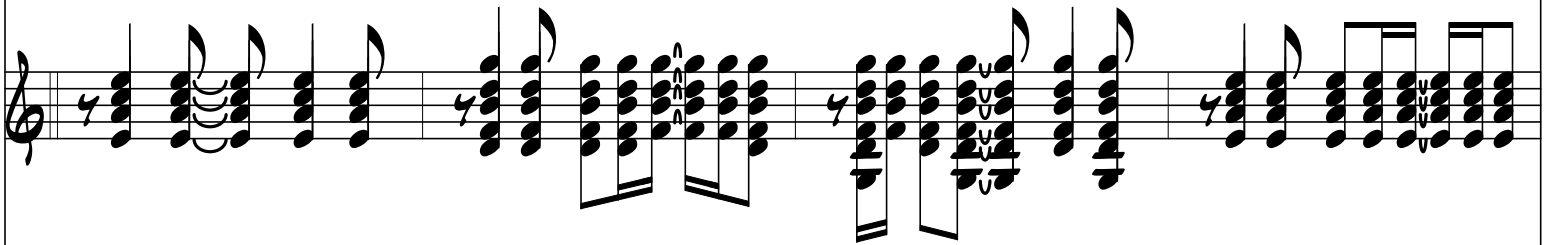
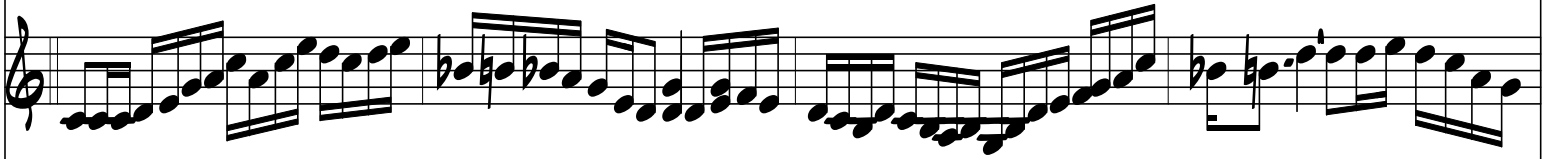
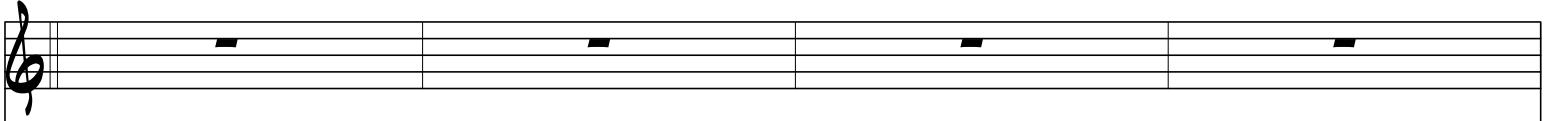
C6



C6

G7

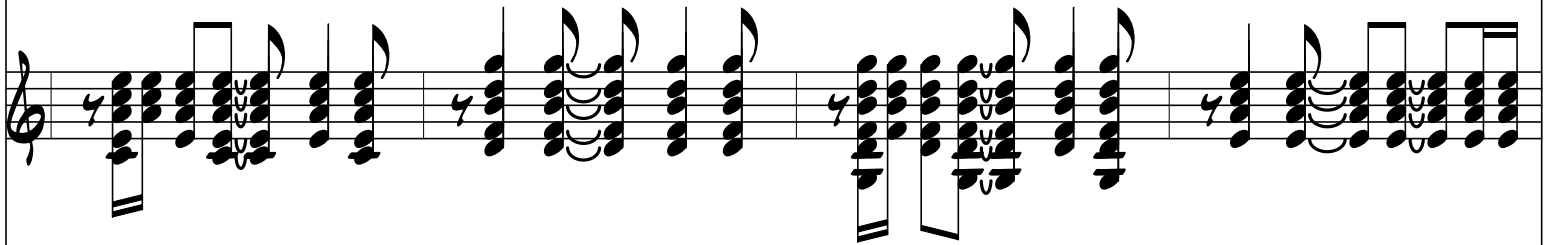
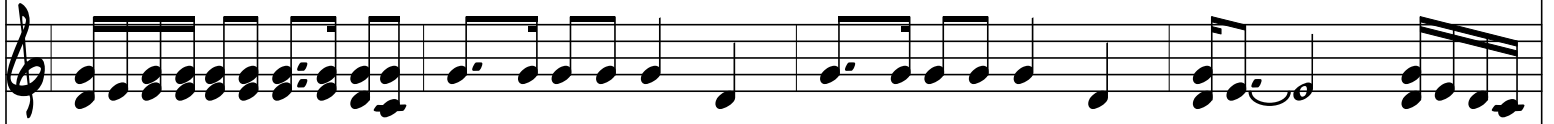
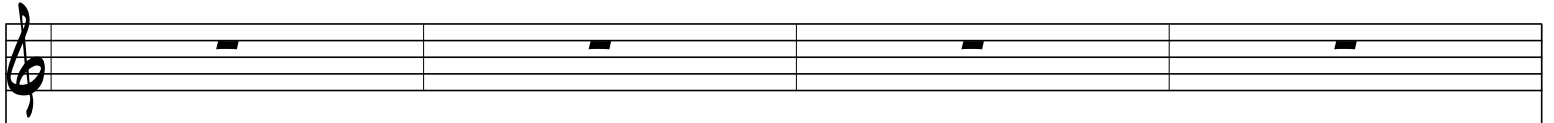
C6



C6

G7

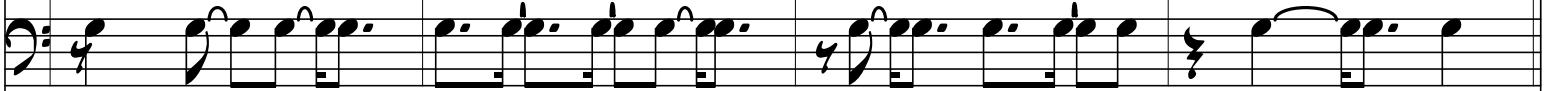
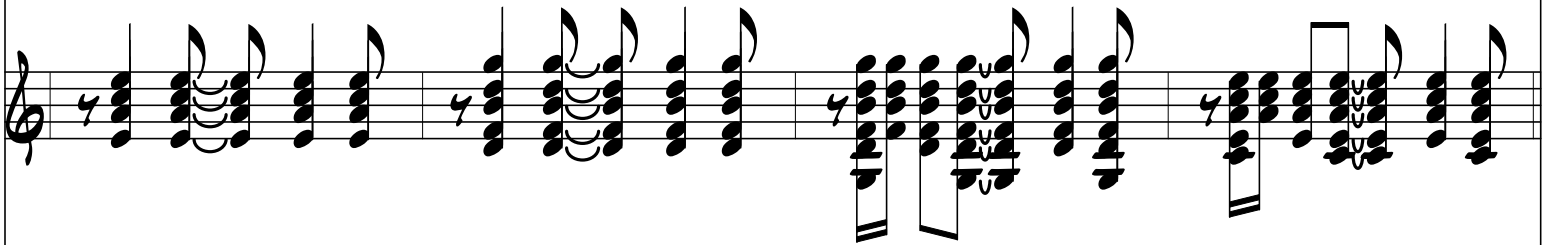
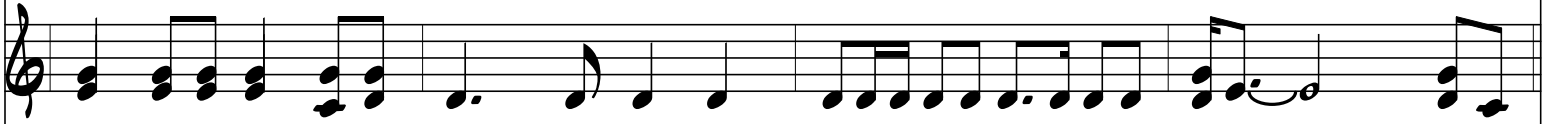
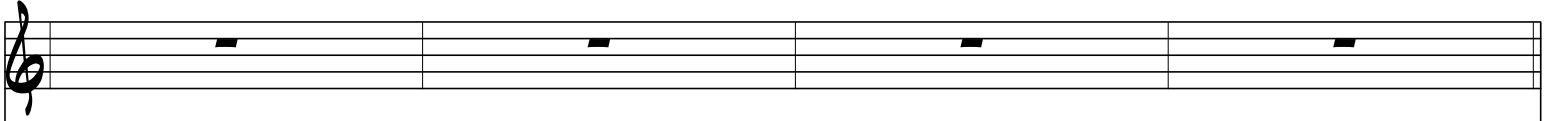
C6



C6

G7

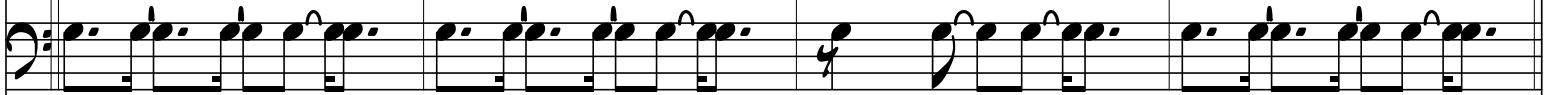
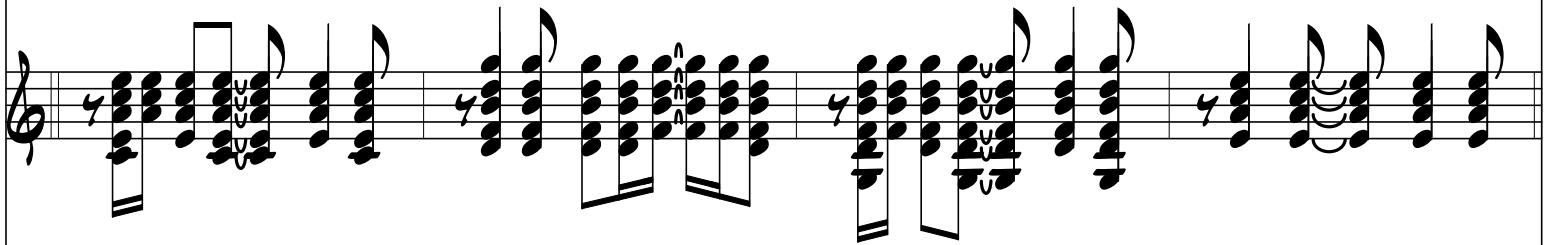
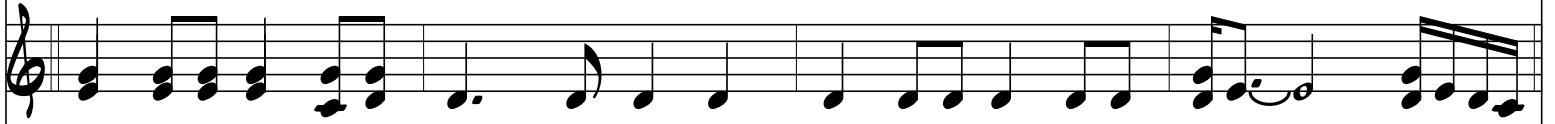
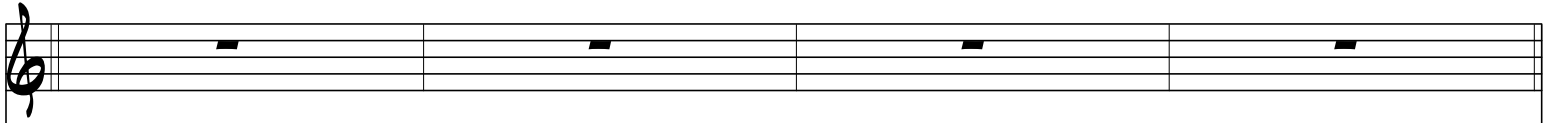
C6



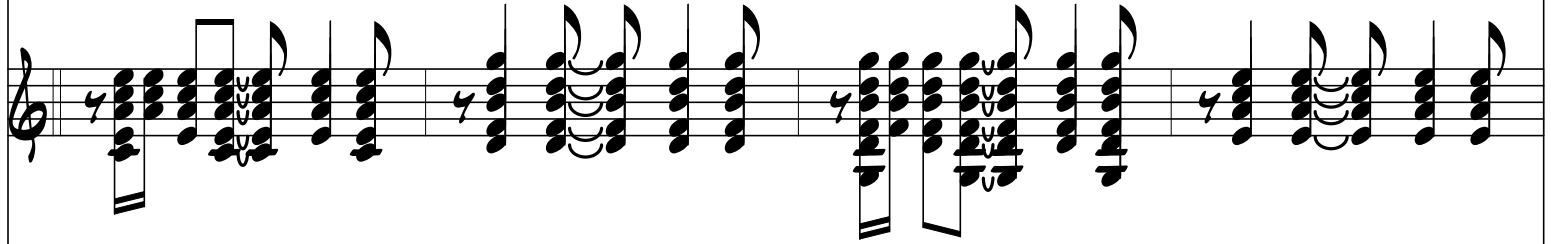
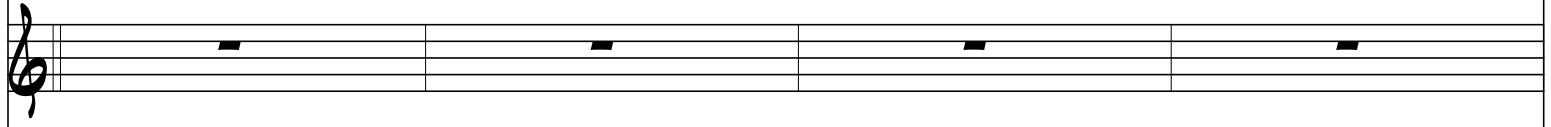
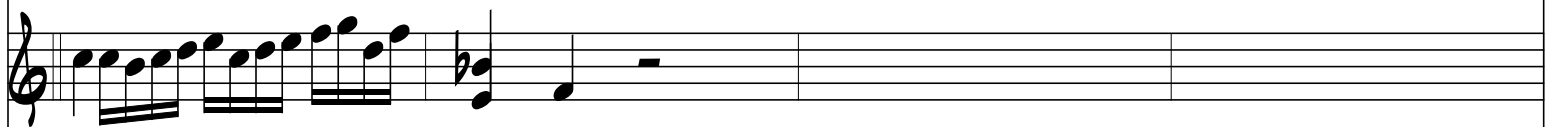
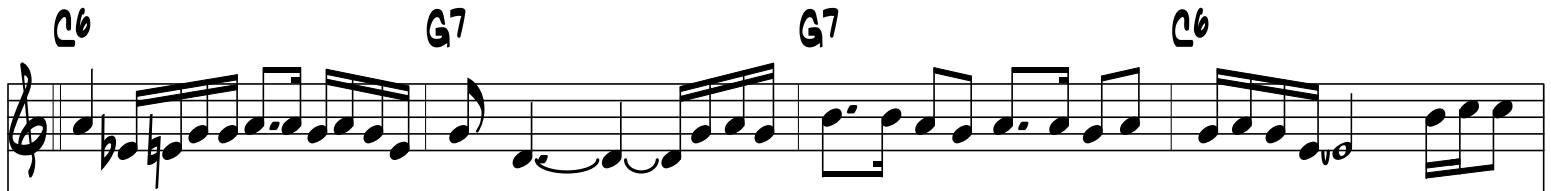
C6

G7

C6



C6 G7 G7 C6



free-scores.com MAKIS GREEK JAMBALAYA - PAGE 22

C6 G7 G7 C6

A musical staff in treble clef. It begins with a C6 chord, followed by a melodic line. The second measure has a G7 chord. The third measure has a G7 chord with a triplet of eighth notes. The fourth measure has a C6 chord. The staff ends with a few notes and a double bar line.

An empty musical staff with a treble clef.


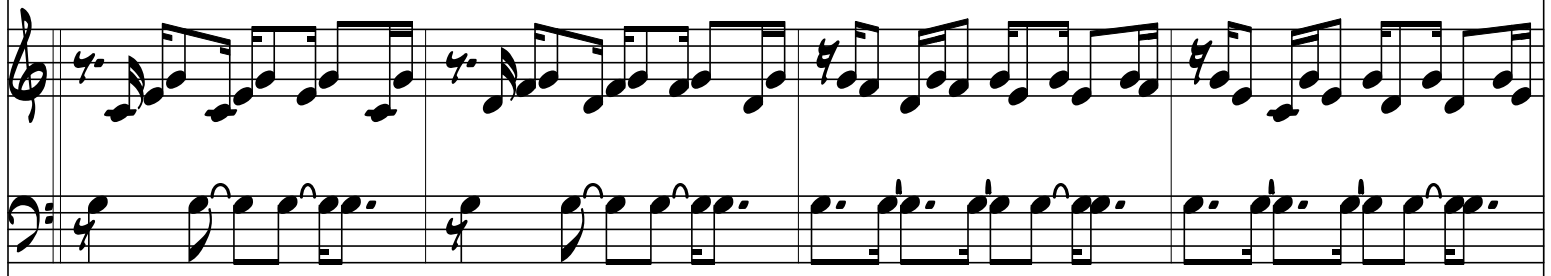
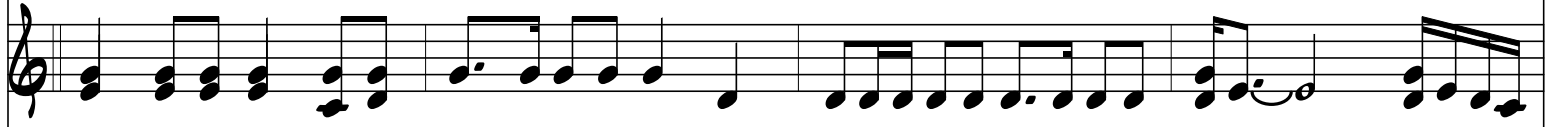
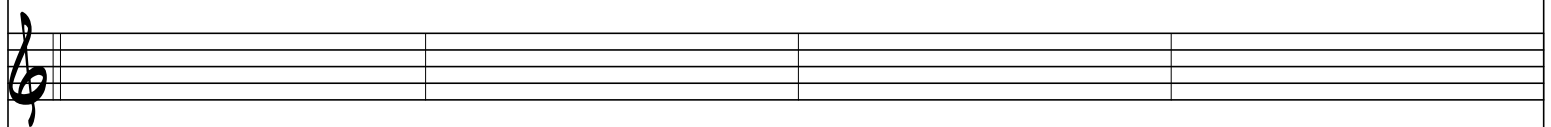
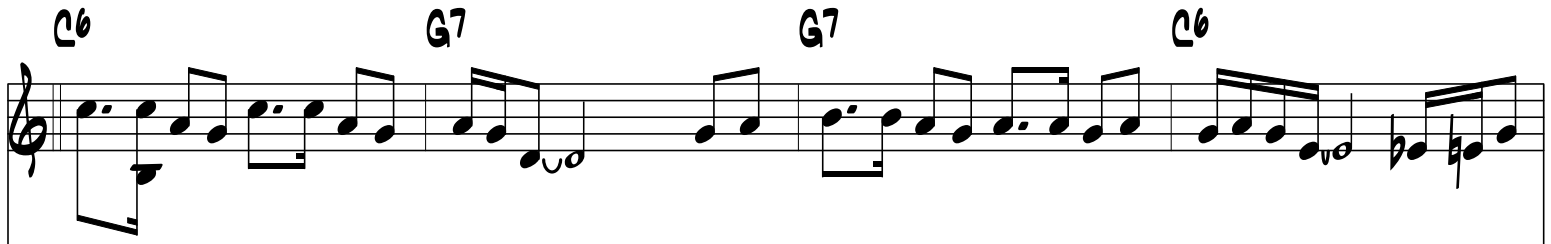
An empty musical staff with a treble clef.

A musical staff in treble clef showing complex chordal accompaniment. It features dense clusters of notes, some with a '4' time signature, and a central section with a 'C6' chord label.

Two musical staves. The top staff is in treble clef and the bottom staff is in bass clef. They show a melodic line in the treble and a bass accompaniment in the bass.

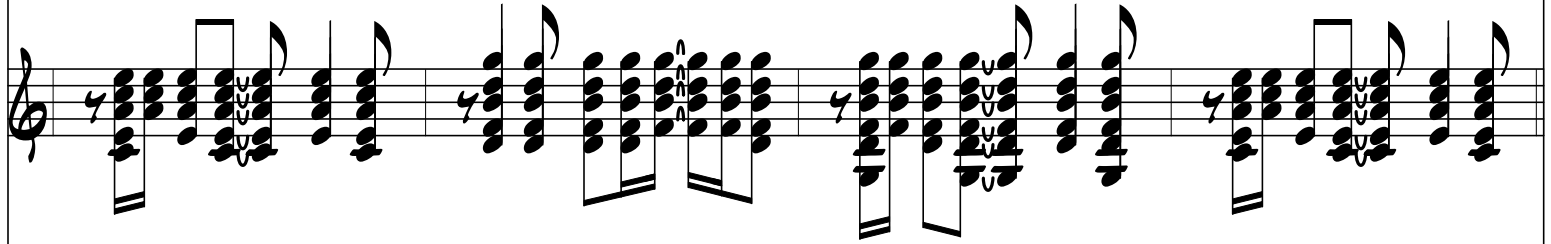
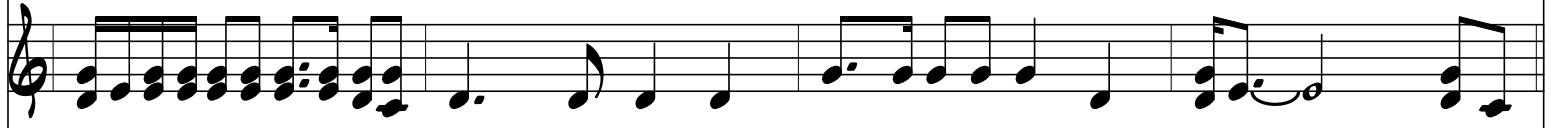
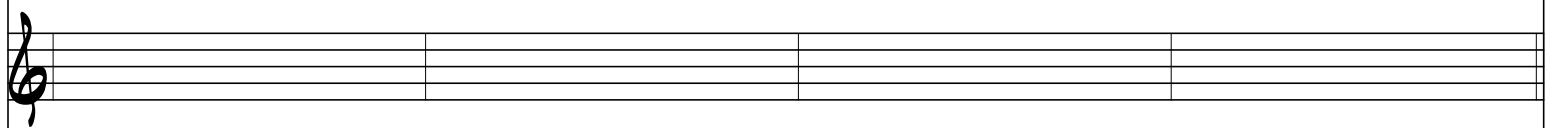
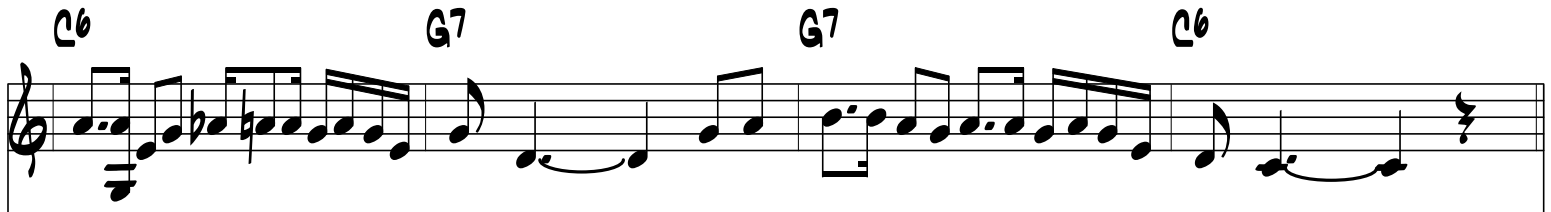
A musical staff in bass clef with a melodic line.

C6 G7 G7 C6



free-scores.com MAKIS GREEK JAMBALAYA - PAGE 24

C6 G7 G7 C6



free-scores.com MAKIS GREEK JAMBALAYA - PAGE 25

26

