



# Gustav Anderson

États-Unis, Norwalk

## BEYOND NOW

### A propos de l'artiste

A ROSE BY ANY OTHER NAME....Hello....in order to keep my sheet music separate from my MP3 music on Freescores I, LEONARD ANDERSON, have established this second account....GUSTAV is my middle name....to hear my MP3's click on LEONARD ANDERSON under INTERPRETER

**Qualification :** BA, MA, Ed.D, Ph.D in music and education

**Page artiste :** [https://www.free-scores.com/partitions\\_gratuites\\_gustavanderson.htm](https://www.free-scores.com/partitions_gratuites_gustavanderson.htm)

### A propos de la pièce



**Titre :** BEYOND NOW

**Compositeur :** Anderson, Gustav

**Droit d'auteur :** Copyright © Gustav Anderson

**Editeur :** Anderson, Gustav

**Instrumentation :** 2 Saxophones (duo)

**Style :** Pop

Gustav Anderson sur [free-scores.com](https://www.free-scores.com)



- écouter l'audio
- partager votre interprétation
- commenter la partition
- contacter l'artiste

# BEYOND NOW

WS

B

E7

E $\flat$ 7

D $\flat$ 7(#11)

G $\flat$ /C

F7(#11)  
( $\flat$ 13)

MELODY 26 ACOUSTIC GUITAR

GUITAR 1236 GUITAR, ELECTRIC, RHYTHM SMOOTH JAZZ POPPY EV16 050

B $\flat$ -7 E7 E $\flat$ 7 D $\flat$ 7(#11) G $\flat$ /C F7(#11)  
( $\flat$ 13)

B $\flat$ -7 G $\flat$ 7 B $\flat$ -7 G $\flat$ 7 B

B $\flat$ -7 G $\flat$ 9 B $\flat$ -7 G $\flat$ 9

E $\flat$ 9 E9 E $\flat$ 9 G $\flat$ 9

Bb-7

Ab-7

Ab-7

D9

Eb9

Gb9

Bb-7 Gb9 Bb-7 Bb-7 B9 B9

Bb-7 Gb9 Bb-7 Gb9

Eb9 E9 Eb9 Gb9

Bb-7 Ab-7 Ab-7 D9 Eb9 Gb9

Bb-7

Gb9

Bb-7

Bb-7 B9 B9

Bb-7

Gb9

Bb-7

Gb9

Eb9

E9

Eb9

Gb9

Bb-7

Ab-7

Ab-7

Db9

Eb9

Gb9

Bb-7

Gb9

Bb-7

Bb-7 B9 B9

B9

Bb-7

Gb9

Bb-7

Gb9

Musical staff with notes and chords: Eb9, E9, Eb9, Gb9

Musical staff with notes and chords: Bb-7, Ab-7, Ab-7, Db9, Eb9, Gb9

Musical staff with notes and chords: Bb-7, Gb9, Bb-7, Bb-7, B9, B9

Musical staff with notes and chords: Bb-7, Gb9, Bb-7, Gb9

Musical staff with notes and chords

E<sup>b</sup>9

E9

E<sup>b</sup>9

G<sup>b</sup>9

Musical staff with notes and chords. The staff contains a series of chords and melodic lines. The chords are labeled as E<sup>b</sup>9, E9, E<sup>b</sup>9, and G<sup>b</sup>9.

B<sup>b</sup>-7    A<sup>b</sup>-7    A<sup>b</sup>-7    D<sup>b</sup>9    E<sup>b</sup>9    G<sup>b</sup>9

Musical staff with notes and chords. The staff contains a series of chords and melodic lines. The chords are labeled as B<sup>b</sup>-7, G<sup>b</sup>9, B<sup>b</sup>-7, B<sup>b</sup>-7, B<sup>9</sup>, and B<sup>9</sup>.

B<sup>b</sup>-7    G<sup>b</sup>9    B<sup>b</sup>-7    B<sup>b</sup>-7    B<sup>9</sup>    B<sup>9</sup>

Musical staff with notes and chords. The staff contains a series of chords and melodic lines. The chords are labeled as B<sup>b</sup>-7, G<sup>b</sup>9, B<sup>b</sup>-7, and G<sup>b</sup>9.

B<sup>b</sup>-7    G<sup>b</sup>9    B<sup>b</sup>-7    G<sup>b</sup>9

Musical staff with notes and chords. The staff contains a series of chords and melodic lines. The chords are labeled as E<sup>b</sup>9, E9, E<sup>b</sup>9, and G<sup>b</sup>9.

E<sup>b</sup>9    E9    E<sup>b</sup>9    G<sup>b</sup>9

Musical staff with notes and chords. The staff contains a series of chords and melodic lines. The chords are labeled as E<sup>b</sup>9, E9, E<sup>b</sup>9, and G<sup>b</sup>9.

Bb-7

Ab-7

Ab-7

D9

Eb9

Gb9

Bb-7 Gb9 Bb-7 Bb-7 B9 B9

Bb-7 Gb9 Bb-7 Gb9

Eb9 E9 Eb9 Gb9

Bb-7 Ab-7 Ab-7 D9 Eb9 Gb9

Bb-7

Gb9

Bb-7

Bb-7 B9 B9

Bb-7

Gb9

Bb-7

Gb9

Eb9

E9

Eb9

Gb9

Bb-7

Ab-7

Ab-7

Db9

Eb9

Gb9

Bb-7

Gb9

Bb-7

Bb-7 B9 B9

B9



Bb-7

Gb9

Bb-7

Gb9

Musical staff with notes and rests. The notes are in a melodic line, starting with a quarter note, followed by a half note, and then a series of eighth notes. There are several rests throughout the staff.

Eb9 E9 Eb9 Gb9

Musical staff with notes and rests. The notes are in a melodic line, starting with a quarter note, followed by a half note, and then a series of eighth notes. There are several rests throughout the staff.

Bb-7 Ab-7 Ab-7 Db9 Eb9 Gb9

Musical staff with notes and rests. The notes are in a melodic line, starting with a quarter note, followed by a half note, and then a series of eighth notes. There are several rests throughout the staff.

Bb-7 Gb9 Bb-7 Bb-7 B9 B9

Musical staff with notes and rests. The notes are in a melodic line, starting with a quarter note, followed by a half note, and then a series of eighth notes. There are several rests throughout the staff.

Bb-7 Gb9 Bb-7 Gb9

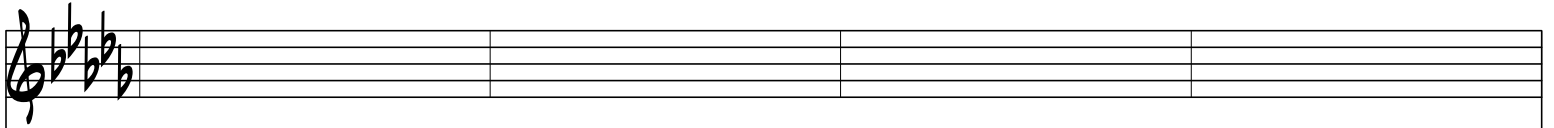
Musical staff with notes and rests. The notes are in a melodic line, starting with a quarter note, followed by a half note, and then a series of eighth notes. There are several rests throughout the staff.

E $\flat$ 9

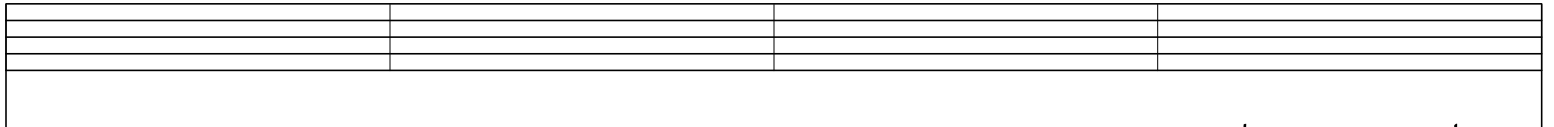
E9

E $\flat$ 9

G $\flat$ 9



B $\flat$ -7      A $\flat$ -7      A $\flat$ -7      D $\flat$ 9      E $\flat$ 9      G $\flat$ 9



B $\flat$ -7      G $\flat$ 9      B $\flat$ -7      B $\flat$ -7      B9      B9

