



Butnariu Alexandru Claudiu

Arrangeur, Compositeur

Roumanie, Bucharest

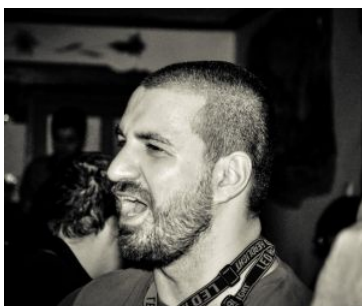
A propos de l'artiste

Alexandru Claudiu Butnariu is a romanian composer born in 1986. He writes light music or musical works for concert band or other musical ensembles.

Sociétaire : UCMR-ADA - Code IPI artiste : 00769 17 22 07

Page artiste : https://www.free-scores.com/partitions_gratuites_alexandrubutnariu.htm

A propos de la pièce



Titre : Floarea de Lotus (the Lotus Flower)
Compositeur : Alexandru Claudiu, Butnariu
Arrangeur : Alexandru Claudiu, Butnariu
Droit d'auteur : Public Domain
Editeur : Alexandru Claudiu, Butnariu
Instrumentation : Fanfare
Style : Valse

Butnariu Alexandru Claudiu sur [free-scores.com](https://www.free-scores.com)



Cette partition ne fait pas partie du domaine public. Merci de contacter l'artiste pour toute utilisation hors du cadre privé.

Interdiction de diffusion sur d'autres sites Web.



- écouter l'audio
- partager votre interprétation
- commenter la partition
- contacter l'artiste

FLOAREA DE LOTUS

Vals de concert

Alexandru Butnariu

Moderato (♩ = 95)

rit. a tempo

Piccolo

Flute

Oboe

Bassoon

Clarinet in Eb

Clarinet in Bb 1

Clarinet in Bb 2

Clarinet in Bb 3

Clarinet in Bb 4

Alto Sax

Tenor Sax

Baritone Sax

Horn in F 1

Horn in F 2

Horn in F 3

Horn in F 4

Trumpet in Bb 1

Trumpet in Bb 2

Trumpet in Bb 3

Trumpet in Bb 4

Trombone 1

Trombone 2

Trombone 3

Bass Trombone

Timpani

Glockenspiel

Tubular Bells

Marimba

Cymbals

Triangle

Snare Drum

Bass Drum

Gong

String Bass

Flugelhorn 1

Flugelhorn 2

Baritone (T.C.)

Euphonium

Tuba 1

Tuba 2

l'istesso tempo

Picc.

Fl.

Ob.

Bsn.

E♭ Cl.

B♭ Cl. 1

B♭ Cl. 2

B♭ Cl. 3

B♭ Cl. 4

A. Sx.

T. Sx.

B. Sx.

Hn. 1

Hn. 2

Hn. 3

Hn. 4

B♭ Tpt. 1

B♭ Tpt. 2

B♭ Tpt. 3

B♭ Tpt. 4

Tbn. 1

Tbn. 2

Tbn. 3

B. Tbn.

Timp.

Cym.

Bs.

Flghn. 1

Flghn. 2

Bar.

Euph.

Tuba 1

Tuba 2

accel. poco a poco

accel. molto

The score is a full orchestral score for 'FLOAREA DE LOTUS'. It features a variety of instruments including woodwinds (Piccolo, Flute, Oboe, Bassoon, Clarinets 1-4, Saxophones Alto, Tenor, Baritone), brass (Horns 1-4, Trumpets 1-4, Trombones 1-3, Tuba 1-2), and percussion (Tympani, Cymbals, Triangle, Snare Drum, Bass Drum, Bass). The score is divided into measures 33 through 48. The tempo markings are *accel. poco a poco* from measure 33 to 43, and *accel. molto* from measure 44 to 48. Dynamics include *pp*, *p*, *mp*, *mf*, *f*, and *ff*. Crescendo markings (*cresc.*) are used throughout. Performance instructions like 'let ring' and 'simile' are present for the triangle and snare drum. The score is written in a key signature of one sharp (F#) and a 2/4 time signature.

Presto (♩ = 200)

poco rit.

Picc.

Fl.

Ob.

Bsn.

E♭ Cl.

B♭ Cl. 1

B♭ Cl. 2

B♭ Cl. 3

B♭ Cl. 4

A. Sx.

T. Sx.

B. Sx.

Hn. 1

Hn. 2

Hn. 3

Hn. 4

B♭ Tpt. 1

B♭ Tpt. 2

B♭ Tpt. 3

B♭ Tpt. 4

Tbn. 1

Tbn. 2

Tbn. 3

B. Tbn.

Timp.

Glk.

T.B.

Cym.

Tr.

S. Dr.

B. Dr.

Bs.

Flghn. 1

Flghn. 2

Bar.

Euph.

Tuba 1

Tuba 2

49 50 51 52 53 54 free-scores.com 58 59 60 61 62 63 64

meno mosso

accel. poco a poco

molto rit.

The score is a full orchestral arrangement for 'FLOAREA DE LOTUS'. It features a variety of instruments including woodwinds (Piccolo, Flute, Oboe, Bassoon, Clarinets, Saxophones), brass (Horns, Trumpets, Trombones, Tuba), percussion (Timpani, Glockenspiel, Cymbals, Snare Drum, Bass Drum, Gong, Bass), and strings (Flute Harmonica, Baritone, Euphonium, Tuba). The score is divided into measures 65 through 80. The tempo markings are *meno mosso*, *accel. poco a poco*, and *molto rit.*. The score includes dynamic markings such as *pp*, *mp*, and *mf*, and articulation markings like *tr* and *acc.*. The score is written in a key signature of one sharp (F#) and a 2/4 time signature.

a tempo (♩ = 95) *rit.* *più mosso* (♩ = 105)

Picc.
Fl.
Ob.
Bsn.
E♭ Cl.
B♭ Cl. 1
B♭ Cl. 2
B♭ Cl. 3
B♭ Cl. 4
A. Sx.
T. Sx.
B. Sx.
Hn. 1
Hn. 2
Hn. 3
Hn. 4
B♭ Tpt. 1
B♭ Tpt. 2
B♭ Tpt. 3
B♭ Tpt. 4
Tbn. 1
Tbn. 2
Tbn. 3
B. Tbn.
Timp.
Glk.
T.B.
Mrb.
Cym.
Tr.
S. Dr.
B. Dr.
Gong
Bs.
Flghn. 1
Flghn. 2
Bar.
Euph.
Tuba 1
Tuba 2

poco rit.

The score is arranged in a standard orchestral format with the following parts from top to bottom:

- Picc.
- Fl.
- Ob.
- Bsn.
- E♭ Cl.
- B♭ Cl. 1
- B♭ Cl. 2
- B♭ Cl. 3
- B♭ Cl. 4
- A. Sx. (with instruction: *Oboe Solo (tacet)*)
- T. Sx. (with instruction: *Bsn. Solo (tacet)*)
- B. Sx.
- Hn. 1
- Hn. 2
- Hn. 3
- Hn. 4
- B♭ Tpt. 1
- B♭ Tpt. 2
- B♭ Tpt. 3
- B♭ Tpt. 4
- Tbn. 1
- Tbn. 2
- Tbn. 3
- B. Tbn.
- Timp.
- Mrb. (with instruction: *dolce*)
- Bs.
- Flghn. 1
- Flghn. 2
- Bar.
- Euph.
- Tuba 1
- Tuba 2

accel. poco a poco

accel. molto

The score is arranged in a standard orchestral layout. The woodwind section includes Piccolo, Flute, Oboe, Bassoon, and four Clarinets (Bb, Bb, Bb, Bb). The reed section consists of Alto, Tenor, and Bass Saxophones. The brass section includes four Horns (1-4), four Trumpets (Bb, Bb, Bb, Bb), three Trombones (1-3), and two Tubas. The percussion section features Timpani, Mridangam, Cymbals, Snare Drum, and Bass Drum. The string section includes Bass. The score is marked with dynamic levels such as *mp*, *f*, *pp*, and *sf*, and includes performance instructions like *stacc.* and *rit.*. The tempo changes from *accel. poco a poco* to *accel. molto* across the page.

Presto (♩ = 200)

poco rit.

meno mosso

accel. poco a poco

molto rit.

Picc.
Fl.
Ob.
Bsn.
E♭ Cl.
B♭ Cl. 1
B♭ Cl. 2
B♭ Cl. 3
B♭ Cl. 4
A. Sx.
T. Sx.
B. Sx.
Hn. 1
Hn. 2
Hn. 3
Hn. 4
B♭ Tpt. 1
B♭ Tpt. 2
B♭ Tpt. 3
B♭ Tpt. 4
Tbn. 1
Tbn. 2
Tbn. 3
B. Tbn.
Timp.
Glk.
T.B.
Cym.
Tr.
S. Dr.
B. Dr.
Bs.
Flghn. 1
Flghn. 2
Bar.
Euph.
Tuba 1
Tuba 2

a tempo (♩ = 95)

rit. a tempo

rall.

molto rall.

The score is a full orchestral and chamber ensemble arrangement. It features a variety of instruments: woodwinds (Piccolo, Flute, Oboe, Bassoon, Clarinets 1-4, Saxophones Alto, Tenor, Baritone), brass (Horns 1-4, Trumpets 1-4, Trombones 1-3, Bass Trombone), percussion (Timpani, Glockenspiel, Tuba, Mridangam, Cymbals, Gong, Bass), and strings (Flageolins 1-2, Baritone, Euphonium, Tubas 1-2). The score is divided into measures, with measure numbers 161 through 176 indicated at the bottom. Performance instructions include 'a tempo' (♩ = 95), 'rit.', 'a tempo', 'rall.', and 'molto rall.'. Dynamic markings such as *mf*, *f*, and *sf* are used throughout. The score includes various musical notations like slurs, ties, and articulation marks.