



# Liana Alexandra

Roumanie, Bucarest

## SONATE POUR PIANO

### A propos de l'artiste

<http://romania-on-line.net/whoswho/AlexandraLiana.htm>

**Qualification :** PROFESSEUR DOCTEUR EN COMPOSITION ET MUSICOLOGIE

**Sociétaire :** GEMA - Code IPI artiste : I-000402252-8

**Page artiste :** [https://www.free-scores.com/partitions\\_gratuites\\_lianaalexandra.htm](https://www.free-scores.com/partitions_gratuites_lianaalexandra.htm)

### A propos de la pièce



**Titre :** SONATE POUR PIANO

**Compositeur :** Alexandra, Liana

**Droit d'auteur :** Copyright © Liana Alexandra

**Editeur :** Alexandra, Liana

**Instrumentation :** Piano seul

**Style :** Contemporain

Liana Alexandra sur [free-scores.com](https://www.free-scores.com)



- écouter l'audio
- partager votre interprétation
- commenter la partition
- contacter l'artiste

SONATA FOR PIANO  
(1993)

LIANA ALEXANDRA

$\text{♩} \approx 66 \text{MM}$

*energico*  
*f*  
*f sempre*  
*f sempre*  
*f*

*f*  
*f*  
*f*  
G. P.  
4"

*mf sempre*  
*mf*  
*mf*  
*f*  
*mf*  
*mf*  
*mf*  
*f*  
*mf*  
*f*  
*mf*  
*mf*  
*mf*  
*mf*  
*mf*  
*f*

Copyright © Liana Alexandra  
ISMN 000.72.96.94.37  
000.72.96.95.35

Handwritten musical notation for the first system. It consists of two staves: a piano staff on top and a bass staff on the bottom. The piano staff contains several chords, some with accidentals (flats and sharps). The bass staff contains a melodic line with a triplet of eighth notes. A dynamic marking of *mf* is present. A section is marked "G.P." with a double bar line and a "2" below it, indicating a repeat. The system ends with a fermata over a chord.

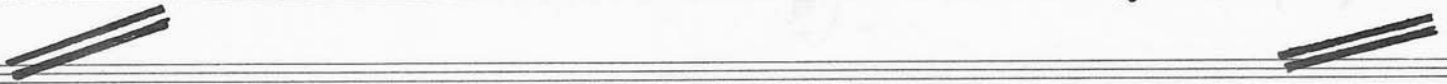
Handwritten musical notation for the second system. It continues the piano and bass parts from the first system. The piano staff features chords and rests. The bass staff has a melodic line with a triplet of eighth notes. Dynamic markings include *f* and *ff*. The system concludes with a fermata over a chord.

Handwritten musical notation for the third system. The piano staff shows chords and rests. The bass staff has a melodic line with a triplet of eighth notes. Dynamic markings include *f* and *mf*. The system ends with a fermata over a chord.

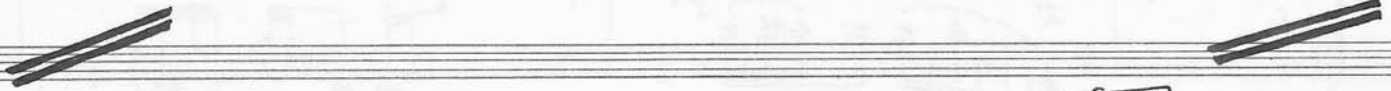
Handwritten musical notation for the fourth system. It begins with a section marked "G.P." with a double bar line and a "2" below it. The piano staff contains chords and rests. The bass staff has a melodic line with a triplet of eighth notes. Dynamic markings include *mf* and *ff*. The system ends with a fermata over a chord.

Handwritten musical notation for the fifth system. The piano staff features chords and rests. The bass staff has a melodic line with a triplet of eighth notes. Dynamic markings include *f* and *mf*. The system concludes with a fermata over a chord.

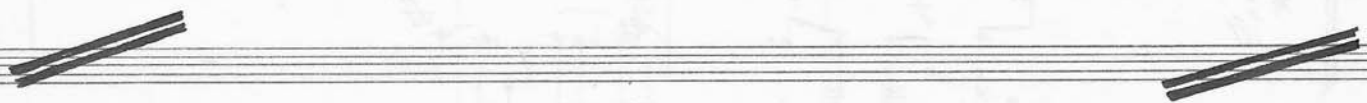
Handwritten musical notation for the first system. It consists of two staves: a treble staff and a bass staff. The treble staff begins with a treble clef and a key signature of one sharp (F#). The first measure contains a whole note chord with a dynamic marking of *f*. The second measure contains a quarter note followed by a quarter rest, with a dynamic marking of *f*. The third measure contains a quarter note followed by a quarter rest, with a dynamic marking of *f*. The fourth measure contains a quarter note followed by a quarter rest, with a dynamic marking of *f*. The fifth measure contains a quarter note followed by a quarter rest, with a dynamic marking of *f*. The sixth measure contains a quarter note followed by a quarter rest, with a dynamic marking of *f*. The seventh measure contains a quarter note followed by a quarter rest, with a dynamic marking of *f*. The eighth measure contains a quarter note followed by a quarter rest, with a dynamic marking of *f*. The ninth measure contains a quarter note followed by a quarter rest, with a dynamic marking of *f*. The tenth measure contains a quarter note followed by a quarter rest, with a dynamic marking of *f*. The eleventh measure contains a quarter note followed by a quarter rest, with a dynamic marking of *f*. The twelfth measure contains a quarter note followed by a quarter rest, with a dynamic marking of *f*. The system ends with a double bar line. Above the first measure, there is a handwritten annotation "G.P. 3'''".



Handwritten musical notation for the second system. It consists of two staves: a treble staff and a bass staff. The treble staff begins with a treble clef and a key signature of one sharp (F#). The first measure contains a whole note chord with a dynamic marking of *f*. The second measure contains a whole note chord with a dynamic marking of *f*. The third measure contains a whole note chord with a dynamic marking of *f*. The fourth measure contains a whole note chord with a dynamic marking of *f*. The fifth measure contains a whole note chord with a dynamic marking of *f*. The sixth measure contains a whole note chord with a dynamic marking of *f*. The seventh measure contains a whole note chord with a dynamic marking of *f*. The eighth measure contains a whole note chord with a dynamic marking of *f*. The ninth measure contains a whole note chord with a dynamic marking of *f*. The tenth measure contains a whole note chord with a dynamic marking of *f*. The eleventh measure contains a whole note chord with a dynamic marking of *f*. The twelfth measure contains a whole note chord with a dynamic marking of *f*. The system ends with a double bar line.



Handwritten musical notation for the third system. It consists of two staves: a treble staff and a bass staff. The treble staff begins with a treble clef and a key signature of one sharp (F#). The first measure contains a whole note chord with a dynamic marking of *f*. The second measure contains a whole note chord with a dynamic marking of *f*. The third measure contains a whole note chord with a dynamic marking of *f*. The fourth measure contains a whole note chord with a dynamic marking of *f*. The fifth measure contains a whole note chord with a dynamic marking of *f*. The sixth measure contains a whole note chord with a dynamic marking of *f*. The seventh measure contains a whole note chord with a dynamic marking of *f*. The eighth measure contains a whole note chord with a dynamic marking of *f*. The ninth measure contains a whole note chord with a dynamic marking of *f*. The tenth measure contains a whole note chord with a dynamic marking of *f*. The eleventh measure contains a whole note chord with a dynamic marking of *f*. The twelfth measure contains a whole note chord with a dynamic marking of *f*. The system ends with a double bar line. Above the fifth measure, there is a handwritten annotation "G.P. 4'''".



Handwritten musical notation for the fourth system. It consists of two staves: a treble staff and a bass staff. The treble staff begins with a treble clef and a key signature of one sharp (F#). The first measure contains a whole note chord with a dynamic marking of *mf*. The second measure contains a whole note chord with a dynamic marking of *mf*. The third measure contains a whole note chord with a dynamic marking of *mf*. The fourth measure contains a whole note chord with a dynamic marking of *mf*. The fifth measure contains a whole note chord with a dynamic marking of *mf*. The sixth measure contains a whole note chord with a dynamic marking of *mf*. The seventh measure contains a whole note chord with a dynamic marking of *mf*. The eighth measure contains a whole note chord with a dynamic marking of *mf*. The ninth measure contains a whole note chord with a dynamic marking of *mf*. The tenth measure contains a whole note chord with a dynamic marking of *mf*. The eleventh measure contains a whole note chord with a dynamic marking of *mf*. The twelfth measure contains a whole note chord with a dynamic marking of *mf*. The system ends with a double bar line.

Copyright © Liana Alexandra  
ISMN 000.72.96.94.37  
000.72.96.95.35

Handwritten musical notation for the first system, measures 1-4. It features a treble and bass staff with various notes, rests, and dynamic markings like 'mp' and 'f'. A slur with the number '5' is present in the first measure, and another slur with '3' is in the second measure. The fourth measure contains a long, complex melodic line with a slur and the number '24' above it.

Handwritten musical notation for the second system, measures 5-8. It features a treble and bass staff with various notes, rests, and dynamic markings like 'f', 'p', and 'mp'. A slur with the number '5' is present in the fifth measure, and another slur with '6' is in the sixth measure. The eighth measure contains a slur with the number '5' and a 'p' dynamic marking.

Handwritten musical notation for the third system, measures 9-12. It features a treble and bass staff with various notes, rests, and dynamic markings like 'mp', 'f', and 'p'. A slur with the number '7' is present in the ninth measure, and another slur with '7' is in the tenth measure. The twelfth measure contains a slur with 'p' and 'mp' dynamic markings.

Handwritten musical notation for the fourth system, measures 13-16. It features a treble and bass staff with various notes, rests, and dynamic markings like 'f' and 'p'. A slur with the number '5' is present in the thirteenth measure, and another slur with '5' is in the fourteenth measure.

Handwritten musical score system 1. It consists of two staves. The upper staff has a treble clef and contains several measures of music with notes, rests, and dynamic markings such as *f* and *mp*. A handwritten '-5' is written above the first measure. The lower staff has a bass clef and contains corresponding notes and rests. The system is separated from the next by a double bar line.

Handwritten musical score system 2. It consists of two staves. The upper staff has a treble clef and contains several measures of music with notes, rests, and dynamic markings such as *mp* and *f*. The lower staff has a bass clef and contains corresponding notes and rests. The system is separated from the next by a double bar line.

Handwritten musical score system 3. It consists of two staves. The upper staff has a treble clef and contains several measures of music with notes, rests, and dynamic markings such as *f*. The lower staff has a bass clef and contains corresponding notes and rests. The system is separated from the next by a double bar line.

Handwritten musical score system 4. It consists of two staves. The upper staff has a treble clef and contains several measures of music with notes, rests, and dynamic markings such as *mp* and *f*. The lower staff has a bass clef and contains corresponding notes and rests. The system is separated from the next by a double bar line.

Copyright © Liana Alexandra  
ISMN 000 72.96.94.37  
000.72.96.95.35

Handwritten musical notation for the first system. It consists of two staves: a treble clef staff on top and a bass clef staff on the bottom. The treble staff begins with a 7th chord, followed by a 3rd chord, and then a series of notes with a slur. The bass staff has a whole note chord, followed by a series of notes with a slur. Dynamic markings include *mf*, *p*, and *mp*. A '-6-' is written above the first measure.

Handwritten musical notation for the second system. It consists of two staves: a treble clef staff on top and a bass clef staff on the bottom. The treble staff has a 5th chord, followed by a 3rd chord, and then a series of notes with a slur. The bass staff has a 6th chord, followed by a series of notes with a slur. Dynamic markings include *mf*, *f*, and *mp*.

Handwritten musical notation for the third system. It consists of two staves: a treble clef staff on top and a bass clef staff on the bottom. The treble staff has a 7th chord, followed by a series of notes with a slur, and then a 5th chord. The bass staff has a 6th chord, followed by a series of notes with a slur. Dynamic markings include *mf* and *f*.

Handwritten musical notation for the fourth system. It consists of two staves: a treble clef staff on top and a bass clef staff on the bottom. The treble staff has a 3rd chord, followed by a series of notes with a slur, and then a 5th chord. The bass staff has a 6th chord, followed by a series of notes with a slur. Dynamic markings include *f* and *mf*.

Handwritten musical notation for the first system. It consists of two staves: a treble staff and a bass staff. The treble staff begins with a treble clef, a key signature of one sharp (F#), and a 3/4 time signature. It contains a triplet of eighth notes (F#, G, A) followed by a quarter rest, then a quarter note (B), and another quarter rest. The bass staff starts with a bass clef and a key signature of one sharp (F#). It contains a quarter note (F#), a quarter rest, a quarter note (G), and a quarter rest. Dynamic markings include *mp* (mezzo-piano) and *mf* (mezzo-forte). The system concludes with a double bar line.

Handwritten musical notation for the second system. It consists of two staves. The treble staff features a series of sixteenth-note patterns, often beamed together in groups of six, with dynamic markings of *mp*. The bass staff contains a series of chords and rests, with some notes beamed together. The system concludes with a double bar line.

Handwritten musical notation for the third system. It consists of two staves. The treble staff continues the sixteenth-note patterns from the previous system, with dynamic markings of *mp*. The bass staff contains chords and rests. The system concludes with a double bar line.

Handwritten musical notation for the fourth system. It consists of two staves. The treble staff has a more complex rhythmic pattern with sixteenth notes and rests, marked with *mf*. The bass staff contains chords and rests. The system concludes with a double bar line.

Handwritten musical notation for the fifth system. It consists of two staves. The first measure of the treble staff is marked with a large '8' above it. The treble staff continues with sixteenth-note patterns, marked with *f* (forte). The bass staff contains chords and rests. The system concludes with a double bar line.



Handwritten musical notation for the first system. The top staff is in treble clef and contains a complex melodic line with sixteenth notes, slurs, and fingerings (6, 5). The bottom staff is in bass clef and contains a bass line with chords and slurs. A measure number '18' is written above the second measure of the top staff. Dynamics include *f*.

Handwritten musical notation for the second system. The top staff is in treble clef and the bottom staff is in bass clef. The system includes a section labeled "G. P. 3''". Dynamics include *mf* and *up*.

Handwritten musical notation for the third system. The top staff is in treble clef and the bottom staff is in bass clef. A section is marked with *ff*. The notation includes slurs and complex rhythmic patterns.

Handwritten musical notation for the fourth system. The top staff is in treble clef and the bottom staff is in bass clef. A section is marked with *f sempre*. The notation includes slurs and complex rhythmic patterns.

Handwritten musical notation for the fifth system. The top staff is in treble clef and the bottom staff is in bass clef. A section is marked with *f sempre*. The notation includes slurs and complex rhythmic patterns.

-9-

Handwritten musical notation for the first system. The treble staff contains a melodic line with notes and rests, including a triplet of eighth notes. The bass staff provides a harmonic accompaniment with eighth and sixteenth notes. The dynamic marking *f sempre* is present. Fingering numbers 3, 6, 6, and 5 are indicated below the treble staff.

Handwritten musical notation for the second system. It begins with a repeat sign. The treble staff has notes and rests with dynamic marking *f sempre*. The bass staff has notes and rests. Fingering numbers 6, 5, and 5 are indicated below the treble staff.

Handwritten musical notation for the third system. The treble staff features a melodic line with notes and rests, including a triplet. The bass staff has notes and rests. The dynamic marking *mf sempre* is present. Fingering numbers 6, 6, 6, and 6 are indicated below the treble staff.

Handwritten musical notation for the fourth system. The treble staff has notes and rests with dynamic marking *f sempre*. The bass staff has notes and rests. Fingering numbers 3, 6, 3, and 6 are indicated below the treble staff.

Handwritten musical notation for the fifth system. The treble staff has notes and rests with dynamic marking *f sempre*. The bass staff has notes and rests. Fingering numbers 3, 3, and 6 are indicated below the treble staff.

Handwritten musical notation for the first system, featuring a treble and bass clef. The music includes a dynamic marking of *mp* and contains several triplet markings (3) and a 3-6 marking. The notation is enclosed in a large bracket.

Handwritten musical notation for the second system, featuring a treble and bass clef. The music includes a dynamic marking of *mp* and contains several triplet markings (3) and a 5 marking. The notation is enclosed in a large bracket.

CADENZA - MODERATO

*Poco rubato molto cantabile*

Handwritten musical notation for the Cadenza section, featuring a treble and bass clef. The music includes a dynamic marking of *mp* and contains several triplet markings (3) and a 5 marking. The notation is enclosed in a large bracket.

Handwritten musical notation for the third system, featuring a treble and bass clef. The music includes a dynamic marking of *pp* and contains several triplet markings (3) and a 3 marking. The tempo marking *dolce lento* is present above the staff.

Handwritten musical notation for the fourth system, featuring a treble and bass clef. The music includes a dynamic marking of *mp* and contains several triplet markings (3) and a 3 marking. The tempo marking *poco a poco accel.* is present above the staff.

a tempo (Moderato)

Handwritten musical notation for the first system. It consists of two staves: a treble clef staff and a bass clef staff. The treble staff begins with a 'sub. mf' dynamic marking. The music includes various note values, rests, and articulation marks. A '5' is written above the first measure of the treble staff, and a '6' is written above the first measure of the second system. The key signature has one flat (B-flat).



Handwritten musical notation for the second system. It consists of two staves: a treble clef staff and a bass clef staff. The music continues with various note values and rests. A '6' is written above the first measure of the treble staff. The key signature has one flat (B-flat).

sed.



dolce lento

Handwritten musical notation for the third system. It consists of two staves: a treble clef staff and a bass clef staff. The music includes various note values, rests, and articulation marks. A 'sub p' dynamic marking is present in the first measure of the bass staff. A '3' is written above the first measure of the treble staff. The key signature has one flat (B-flat).



poco a poco accel.

Handwritten musical notation for the fourth system. It consists of two staves: a treble clef staff and a bass clef staff. The music includes various note values, rests, and articulation marks. A 'ff' dynamic marking is present in the first measure of the bass staff. A '3' is written above the first measure of the treble staff. The key signature has one flat (B-flat).



Allegro

Handwritten musical notation for the fifth system. It consists of two staves: a treble clef staff and a bass clef staff. The music includes various note values, rests, and articulation marks. A 'mf' dynamic marking is present in the first measure of the treble staff. A '3' is written above the first measure of the treble staff. The key signature has one flat (B-flat).

Handwritten musical notation for the first system. It consists of two staves: a treble staff and a bass staff. The treble staff begins with a treble clef, a key signature of one sharp (F#), and a 4/4 time signature. It contains several measures of music, including a half note, a quarter note, and a half note with a fermata. The bass staff begins with a bass clef and contains several measures of music, including a half note, a quarter note, and a half note with a fermata. Dynamic markings include 'f' (forte) and 'ff' (fortissimo). There are also some handwritten annotations like '6' and '8' above notes.

Handwritten musical notation for the second system. It consists of two staves: a treble staff and a bass staff. The treble staff begins with a treble clef and contains several measures of music, including a half note, a quarter note, and a half note with a fermata. The bass staff begins with a bass clef and contains several measures of music, including a half note, a quarter note, and a half note with a fermata. Dynamic markings include 'ff' (fortissimo) and 'subp.' (subito piano). There are also some handwritten annotations like '6' and '8' above notes.

Handwritten musical notation for the third system. It consists of two staves: a treble staff and a bass staff. The treble staff begins with a treble clef and contains several measures of music, including a half note, a quarter note, and a half note with a fermata. The bass staff begins with a bass clef and contains several measures of music, including a half note, a quarter note, and a half note with a fermata. Dynamic markings include 'mp' (mezzo-piano). There are also some handwritten annotations like '3' above notes.

Handwritten musical notation for the fourth system. It consists of two staves: a treble staff and a bass staff. The treble staff begins with a treble clef and contains several measures of music, including a half note, a quarter note, and a half note with a fermata. The bass staff begins with a bass clef and contains several measures of music, including a half note, a quarter note, and a half note with a fermata. Dynamic markings include 'mp' (mezzo-piano). There are also some handwritten annotations like '3' above notes.

Handwritten musical notation for the fifth system. It consists of two staves: a treble staff and a bass staff. The treble staff begins with a treble clef and contains several measures of music, including a half note, a quarter note, and a half note with a fermata. The bass staff begins with a bass clef and contains several measures of music, including a half note, a quarter note, and a half note with a fermata. Dynamic markings include 'mf sempre' (mezzo-forte sempre). There are also some handwritten annotations like '3' above notes.

Handwritten musical notation for the first system. It consists of two staves: a treble clef staff and a bass clef staff. The treble staff contains several notes, some with accidentals (sharps and flats), and rests. The bass staff contains a triplet of eighth notes, followed by other rhythmic patterns. Dynamic markings include 'f' and 'ff'. There are also some handwritten annotations above the notes.

A Tempo (♩ ≈ 66MM)

Handwritten musical notation for the second system. It features two staves. The first staff has a treble clef and contains several notes with accidentals. The second staff has a bass clef and contains notes with accidentals. A dynamic marking 'ff sempre' is present. There are also some handwritten annotations and symbols.

Handwritten musical notation for the third system. It features two staves. The first staff has a treble clef and contains notes with accidentals. The second staff has a bass clef and contains notes with accidentals. A dynamic marking 'subff' is present. There are also some handwritten annotations and symbols.

Handwritten musical notation for the fourth system. It features two staves. The first staff has a treble clef and contains notes with accidentals. The second staff has a bass clef and contains notes with accidentals. A dynamic marking 'f' is present. There are also some handwritten annotations and symbols.

Handwritten musical score for the first system. It consists of two staves: a piano staff on top and a bass staff on the bottom. The piano staff contains several chords, some with accidentals (sharps and naturals). The bass staff contains chords and some melodic lines. Dynamics include *f* (forte) and *sub p dolce* (subito piano dolce). There are also some handwritten annotations like "y" and "ff".

Handwritten musical score for the second system. It consists of two staves: a piano staff on top and a bass staff on the bottom. The piano staff contains chords and some melodic lines. The bass staff contains chords and some melodic lines. Dynamics include *sub ff* (subitissimo fortissimo) and *mf* (mezzo-forte). There are also some handwritten annotations like "y" and "ff".

Handwritten musical score for the third system. It consists of two staves: a piano staff on top and a bass staff on the bottom. The piano staff contains chords and some melodic lines. The bass staff contains chords and some melodic lines. Dynamics include *f* (forte) and *mf* (mezzo-forte). There are also some handwritten annotations like "y" and "ff".

Handwritten musical score for the fourth system. It consists of two staves: a piano staff on top and a bass staff on the bottom. The piano staff contains a melodic line with many accidentals and dynamics like *mp* (mezzo-piano) and *mf* (mezzo-forte). The bass staff contains chords and some melodic lines. There is a handwritten annotation "G. P." (Grand Piano) and a dynamic marking *f* (forte) below the piano staff.

Handwritten musical score for the fifth system. It consists of two staves: a piano staff on top and a bass staff on the bottom. The piano staff contains a melodic line with many accidentals and dynamics like *mp* (mezzo-piano) and *mf* (mezzo-forte). The bass staff contains chords and some melodic lines.

Handwritten musical notation for the first system. The treble clef staff contains sixteenth-note runs with fingerings '6' and '6'. The bass clef staff has a whole note chord with a 'mf' dynamic marking.

Handwritten musical notation for the second system. The treble clef staff contains eighth-note chords with fingerings '3', '6', '3', and '3'. The bass clef staff contains eighth-note chords with a '5' fingering and a 'mp' dynamic marking.

Handwritten musical notation for the third system. The treble clef staff contains eighth-note chords with fingerings '3', '3', '3', and '3'. The bass clef staff contains eighth-note chords with a '5' fingering and a 'mp' dynamic marking.

Handwritten musical notation for the fourth system. The treble clef staff contains eighth-note chords with fingerings '3', '3', '3', and '3'. The bass clef staff contains eighth-note chords with a '3' fingering and a 'mp' dynamic marking.

Handwritten musical notation for the fifth system. The treble clef staff contains eighth-note chords with fingerings '3', '3', '3', and '3'. The bass clef staff contains eighth-note chords with a '3' fingering and a 'pp dolce' dynamic marking.



Handwritten musical notation for the first system. It consists of a treble clef staff and a bass clef staff. The treble staff contains a melodic line with several triplet markings (indicated by a '3' over a bracket) and dynamic markings of *mp*. The bass staff provides a harmonic accompaniment with notes and rests. The system concludes with a double bar line and a final treble clef staff.



Handwritten musical notation for the second system. The treble staff features a continuous sixteenth-note pattern with a '6' above it, and dynamic markings of *mp* and *pp*. The bass staff has a few notes and rests. The system ends with a double bar line and a final treble clef staff.



Handwritten musical notation for the third system. The treble staff continues with sixteenth-note patterns, marked with a '6' and *mp*. The bass staff has notes and rests. The system concludes with a double bar line and a final treble clef staff.



Handwritten musical notation for the fourth system. The treble staff has a melodic line with a *dolce* marking and a triplet of eighth notes. The bass staff has notes and rests. The system ends with a double bar line and a final treble clef staff.



Handwritten musical notation for the fifth system. The treble staff has a melodic line with a triplet of eighth notes and a *mp* marking. The bass staff has notes and rests. The system concludes with a double bar line and a final treble clef staff.

Handwritten musical notation for measures 17-18. The top staff contains a melodic line with triplets and slurs, marked with dynamics *mf* and *mp*. The bottom staff contains a bass line with triplets and slurs, marked with dynamics *mf* and *mp*. The key signature has one sharp (F#).

Handwritten musical notation for measures 19-20. The top staff contains a melodic line with sixteenth-note patterns, marked with dynamics *mp sempre*. The bottom staff contains a bass line with chords and slurs, marked with dynamics *mp sempre*. The key signature has one sharp (F#).

Handwritten musical notation for measures 21-22. The top staff contains a melodic line with sixteenth-note patterns, marked with dynamics *mp sempre*. The bottom staff contains a bass line with chords and slurs, marked with dynamics *mp sempre*. The key signature has one sharp (F#).

Handwritten musical notation for measures 23-24. The top staff contains a melodic line with sixteenth-note patterns, marked with dynamics *mp sempre*. The bottom staff contains a bass line with chords and slurs, marked with dynamics *mp sempre*. The key signature has one sharp (F#).

Handwritten musical notation for measures 25-26. The top staff contains a melodic line with sixteenth-note patterns, marked with dynamics *mp sempre*. The bottom staff contains a bass line with chords and slurs, marked with dynamics *mp sempre*. The key signature has one sharp (F#).

Musical notation for the first system, featuring a bass clef and a grand staff. It includes sixteenth-note runs in the right hand and chords in the left hand. Dynamics include mp and pp.

CADENZA

Musical notation for the cadenza section, consisting of two systems. It features treble and bass clefs with various musical notations including slurs, dynamics (mp sempre, pp, bp), and pedal markings.

Musical notation for the second system of the cadenza, continuing the treble and bass clef notation with slurs, dynamics (mp sempre, mp), and pedal markings.

Musical notation for the third system of the cadenza, starting with the tempo marking "Presto". It includes sixteenth-note runs, slurs, dynamics (mp sempre, fff), and pedal markings.

Musical notation for the first system, featuring piano and bass staves with sixteenth-note runs and slurs.

Handwritten performance instructions for the first system:

- 8- - - - -
- ff* *l.v.*
- ff* *l.v.*
- ff*
- ped.

RUBATO

ACCELL...

Musical notation for the second system, including 'RUBATO' and 'ACCELL...' markings, with piano and bass staves.

*mp sempre*

rall...

Allegro

Musical notation for the third system, including 'mp sempre', 'rall...', and 'Allegro' markings, with piano and bass staves.

Allegro

Allegro

Musical notation for the fourth system, including 'Allegro' markings, piano and bass staves, and dynamic markings like 'mf', 'f', and 'fff'.

Handwritten musical notation for the first system, featuring treble and bass staves. The bass staff includes a sixteenth-note pattern with a '6' below it. The treble staff has a fermata and a dynamic marking of *ff*. The tempo marking is *Moderato* ( $\text{♩} \approx 66 \text{ MM}$ ).

Handwritten musical notation for the second system. It includes a treble staff with a fermata and a dynamic marking of *ff*. The bass staff has a sixteenth-note pattern with a '6' below it. The tempo marking is *Tempo giusto* ( $\text{♩} \approx 60 \text{ MM}$ ). The section concludes with a *rall...* marking.

Handwritten musical notation for the third system. The treble staff features a melodic line with a *Rubato* marking and a *rall...* marking. The bass staff has a sixteenth-note pattern with a '6' below it. The dynamic marking is *mf sempre*.

Handwritten musical notation for the fourth system. The treble staff starts with an *Allegro* tempo marking and a dynamic marking of *ff*. It then transitions to *(molto rubato) (Moderato)* and ends with a *rall...* marking. The bass staff has a sixteenth-note pattern with a '6' below it.

Handwritten musical notation for the fifth system. The treble staff has a melodic line with a dynamic marking of *mp*. The bass staff has a sixteenth-note pattern with a '6' below it. The tempo marking is *Allegro*. The system ends with a dynamic marking of *ff* and a '6' below it.

giusto mp mf

Rubato giusto Presto

Presto possibile

Rall molto

Musical notation for the first system, featuring a treble and bass staff. The treble staff contains a melodic line with eighth and sixteenth notes. The bass staff contains a sustained accompaniment with chords and a long pedal point. The tempo marking "Rall molto" is written above the treble staff.

Energico

6

Musical notation for the second system. It includes dynamic markings such as "mp" and "mp sempre", and a "ped." marking. A bracketed section of six chords is labeled "Energico" and "6". The notation includes a treble staff with a melodic line and a bass staff with chords and a long pedal point.

Presto possibile - ripetere ad libitum

Musical notation for the third system. The tempo marking "Presto possibile - ripetere ad libitum" is written above the treble staff. The treble staff contains a melodic line with eighth notes. The bass staff features a long, sustained pedal point with chords.

Rall...

Musical notation for the fourth system. It includes dynamic markings such as "pp" and "mp". The treble staff has a melodic line with some accidentals. The bass staff has a long pedal point with chords. A "ped." marking is present at the end of the system.

Molto rubato e molto calmo

Musical notation for the fifth system. It includes dynamic markings such as "pp sempre" and "ped.". The treble staff has a melodic line with a triplet of eighth notes. The bass staff has a long pedal point with chords.

*molto cantabile*

-23-



mp mf

8-.....  
[ ] l.v. 2  
mp [ ] p.v. 2  
mp

Rall...  
mf mp

p.v. al niente  
mp mp