



Liana Alexandra

Roumanie, Bucarest

Opera "In The Labyrinth" ? 7

A propos de l'artiste

<http://romania-on-line.net/whoswho/AlexandraLiana.htm>

Qualification : PROFESSEUR DOCTEUR EN COMPOSITION ET MUSICOLOGIE

Sociétaire : GEMA - Code IPI artiste : I-000402252-8

Page artiste : https://www.free-scores.com/partitions_gratuites_lianaalexandra.htm

A propos de la pièce



Titre : Opera "In The Labyrinth" ? 7
Compositeur : Alexandra, Liana
Droit d'auteur : Copyright © Liana Alexandra
Editeur : Alexandra, Liana
Instrumentation : Voix et Orchestre
Style : Opera

Liana Alexandra sur [free-scores.com](https://www.free-scores.com)



- écouter l'audio
- partager votre interprétation
- commenter la partition
- contacter l'artiste

ÎN LABIRINT

de

Liana Alexandra

dupa romanul "Tronaj" de

George Arion

Actul II

35 pag x 2

$35 \times 2 = 70 \times 2 = 140$

Perio. I

- 4 timpani
- 2 t-toms
- 9 cassa
- tamb. picc.
- piatto
- 3 wood-bl

Perio. II

- xylofono
- triangolo
- piatto
- tamb. basso
- gong
- 3 kugel-bl.
- maracas
- 2 bangers
- vibrafono

ACT IV II
273-

Nr. 10

1 $\frac{4}{4}$ (♩ = 66 bpm)

ob
cl
Fg
Cor
I Horn
II Bongo
vln I
vln II
vla
vlc
cb

5 6

ob
cl
Fg
Cor
I Horn
II Bongo
vln I
vln II
vla
vlc
cb

Handwritten musical score for measures 7, 8, and 9. The score includes staves for Oboe (ob), Clarinet (cl), Flute (Flg), Cor, Horn I (I Horn), Horn II (II Horn), Violin I (vln I), Violin II (vln II), Viola (vla), Violoncello (vcl), and Contrabass (cb). The music features complex rhythmic patterns with many sixteenth notes and dynamic markings such as *f*, *mf*, and *mp*. Measure numbers 7, 8, and 9 are clearly marked above the staves.

Handwritten musical score for measures 10, 11, and 12. The score includes staves for Oboe (ob), Clarinet (cl), Flute (Flg), Cor, Horn I (I Horn), Horn II (II Horn), Violin I (vln I), Violin II (vln II), Viola (vla), Violoncello (vcl), and Contrabass (cb). The music continues with complex rhythmic patterns and dynamic markings like *f*, *mf*, and *mp*. Measure numbers 10, 11, and 12 are clearly marked above the staves.

13

14

HARA:

15

CUM AMICĂ A TOST O MORȚĂ?

ob
cl
Fg
Coi
II Horn
II Basso
vln I
vln II
vla
vlc
Cb

16

17

18

MARINAR. I | AH AJUNS LA CASUTA DE CARE SI-A ALES O SUZANA. CASUTA CU HUNDARUL
OPT. AM CIOCANIT LA USA. NICI UN RASPUNS. AH BATUT ATUNCI MAI TARE. ACELASI REZULTAT.

ob
cl
Fg
Coi
II Horn
II Basso
vln I
vln II
vla
vlc
Cb

19

20

21

MI-AM LIS: HE CE-O FI, SI-AM MASAT DE CIAMPA, USA SA DESCHIS: ZAVORUL DE
PE DINĂUNTRU NU ERA PUS. AM ZĂRIT-O ÎNȚINSĂ PE PAT, ÎNBRĂCĂTĂ CU ACELEAȘI

Fl
ob
cl
fg
cor
Trio
trb

II
Horn
Tamp.
Ed.
bongo

Aspx

vlr I
vlr II
vla
vle
cb

22 HAINA CU CARE VENISE PE INSULA. MI-AM ENCHIDUIET CA E OROBITA SI JOARME.
 23
 24
 AM SCUTURAT-O UȘOR PE UMĂR. ATUNCI CAPUL S-A LĂSAT ÎNTR-O PARTE SI AM

Handwritten musical score for orchestra and vocal soloist. The score is divided into three measures corresponding to the lyrics above. The instruments listed on the left are:

- Fl (Flute)
- Ob (Oboe)
- Cl (Clarinet)
- Fg (Fagot)
- Cor (Corn)
- Top (Trompete)
- Tbo (Tromboni)
- I [I-tom]
- I [I-tom]
- II [I-tom]
- III [I-tom]
- Aspa (Soloist)
- vln I (Violin I)
- vln II (Violin II)
- vla (Viola)
- vcl (Violoncelo)
- cb (Contrabas)

The score includes various musical notations such as notes, rests, dynamics (e.g., *f*, *mf*), and articulation marks. The vocal line (Aspa) is written in a separate staff with lyrics. The orchestral parts are arranged in a standard symphonic layout.

25 26 27

VĂPUT PE GET O URMA ORIBILĂ. CRED C-A MURIT PE LOC. ÎNGROZITOR...
O FATA ATIT DE TÎNĂRA ȘI DE FRUMOASĂ. POATE N-A MURIT ÎNCA... SĂ

Fl
Ob
Cl
Fg
Cor
Tpt
Ttb

II Horn
Trumpet
Tuba

Apa

vlr I
vlr II
vla
vcl
cb

MERGEM SA SALVAM. VINERANU DIN PACATE NU MAI E NICI O SANSA.
STOLERCIUC: ACESTA-I BLESTEMUL ZEITFI. VEDETI, BRATELE ACELEA PE CARE VI LE-AM

Handwritten musical score for a symphony orchestra. The score is written on multiple staves, including woodwinds, brass, strings, and percussion. The instruments listed on the left are:

- Fl (Flute)
- Ob (Oboe)
- Cl (Clarinet)
- Fg (Fagot)
- Cor (Corn)
- Trp (Trumpet)
- Trb (Trombone)
- I Horn (First Horn)
- II Horn (Second Horn)
- III Horn (Third Horn)
- Drums (Drum)
- Cymbals (Cymbal)
- Bass Drum (Bass Drum)
- Appl (Applaud)
- Violin I (Violin I)
- Violin II (Violin II)
- Vla (Viola)
- Vcl (Violoncello)
- Cb (Contrabass)

The score includes various musical notations such as notes, rests, and dynamic markings (e.g., *f*, *mf*, *af*). There are also some handwritten annotations and corrections in the score.

31 ARĂTAT AU APARTINUT UNEI STATUI DE O MARE VALOARE, EA REPREZENTA MAI MULT CA
SIGUR O ZEITĂ SAU PE CINEVA IMPORTANT ÎN LUMEA GRECILOR, ELE AU FOST

Handwritten musical score for a symphony orchestra. The score is divided into three measures corresponding to the lyrics above. The instruments listed on the left are:

- Fl (Flute)
- ob (Oboe)
- cl (Clarinet)
- Fg (Fagot)
- Cor (Corn)
- Trp (Trumpet)
- Tbn (Tuba)
- I Trom (I Trombone)
- II Trom (II Trombone)
- Org (Organ)
- Str I (Violin I)
- Str II (Violin II)
- Viola
- Vcl (Violoncello)
- Cb (Contrabass)

The score includes various musical notations such as clefs, key signatures, dynamics (e.g., *f*, *mf*, *mp*), and articulation marks. The lyrics are written in Romanian. The page number -280- is at the top center.

~~35~~ 35 36

ORI FURATE, ORI RUPTE IN TIMPUL CATACLISMELOR DE PE INSULA. LEGENDA SPUNE
CA DACA CINEVA DA DE ELE MAI INAINTE CA INSA SI ZEITA SA SI LE GASSEASCA,

ob
cl
Fg
Cor
Tnp

II tom
- temple
bl.
bongo

Arpa
piano

ob I
ob II
vla
vc
cb

37 38 39
ASUPRA ACUTIA SE ABATE O MARE PRIMEJDE. LA TA DESCOPERIREA MEA
A ADUS O ASEMENEA NENOROCIRE OASPETILOR MEI.

ob. *mf*

cl. *mf*

Fg. *mf*

Cor. *mf*

Trp. *f*

Flon. *f*

trump. *f*

truba. *f*

Apca. *f*

claro. *f*

vl. I *mf*

vl. II *mf*

vl. *mf*

vl. c. *mf*

cb. *mf*

70 71 72
HARINAR 2 : AICI E VOABA DE UN CRIMINAL ORANIAN SI CET SE POATE DE REAL.

Handwritten musical score for a symphony orchestra. The score is divided into three measures, numbered 70, 71, and 72. The instruments listed on the left are: Flute (fl), Clarinet (cl), Bassoon (Fg), Cor (Cor), Trumpet (Tup), Trombone (Tbn), Tuba (Tuba), Arpa (Arpa), Violin I (vln I), Violin II (vln II), Viola (vla), Violoncello (vcl), and Contrabasso (cb). The score includes various musical notations such as notes, rests, dynamics (mf, f), and articulation marks. The vocal line at the top contains the lyrics: "HARINAR 2 : AICI E VOABA DE UN CRIMINAL ORANIAN SI CET SE POATE DE REAL." The score is written in a standard musical notation style with a key signature of one sharp (F#) and a common time signature (C).

13 ANDREI DOAMNELOR SI DOMNILOR INCEPE DANSELE 14 284 15 MIARA AI SHERBANI?!

Handwritten musical score for measures 13-15. The score includes staves for woodwinds (oboe, clarinet, flute, cor), percussion (tambourine, bongo), and strings (violin I, violin II, viola, violoncello, double bass). The woodwinds play rhythmic patterns of eighth and sixteenth notes. The strings play sustained chords and simple melodic lines.

16 ACUM TE-AI GASIT SA 17 BATAI TACTUL DE VALS? 18

Handwritten musical score for measures 16-18. The score includes staves for woodwinds (oboe, clarinet, flute, cor), percussion (tambourine, bongo), and strings (violin I, violin II, viola, violoncello, double bass). The woodwinds play rhythmic patterns with dynamic markings like *mf* and *mp*. The strings play sustained chords and simple melodic lines.

50 51
[Andrei] : LINGA PINEI E ABEZANIE MAI STRĂDUCEȘTE-ȘI CA ORIGINE.

ob
cl
Fg
Cor
II timp
vln I
vln II
vla
vlc
cb

52 53 54

ob
cl
Fg
Cor
II timp
vln I
vln II
vla
vlc
cb

Alacca

7/8 Praelud. (d. = 1.)

286-

I Flto

Handwritten musical score for the first system, measures 1-5. The score includes staves for Flute I, Violin I, Violin II, Viola, Violoncello, and Contrabasso. The Flute I part features a melodic line with dynamics *pp* and *sfz*. The string parts provide harmonic support with various dynamics including *p*, *pp*, and *mp*. Measure numbers 1 through 5 are indicated above the Flute I staff.

Fl
Cl
Fg
Cor

Handwritten musical score for the second system, measures 6-9. This system includes staves for Flute, Clarinet, Bassoon, and Cor Anglais. The Flute part has dynamics *mp* and *f*. The Clarinet and Bassoon parts feature sustained notes with dynamics *mp* and *f*. The Cor Anglais part has a dynamic of *mp*. Measure numbers 6 through 9 are indicated above the Flute staff.

I Flto
Hrnp
Hrnb
Bass

Handwritten musical score for the third system, measures 10-13. This system includes staves for Flute I, Flute II, Viola, Violoncello, and Contrabasso. The Flute I part has dynamics *mp* and *p*. The Flute II part has a dynamic of *mp*. The Viola, Violoncello, and Contrabasso parts have dynamics of *mp*. Measure numbers 10 through 13 are indicated above the Flute I staff.

10 11 13 *molto poco rall...* *rall...*

cl
Trp
I Fltto
II Fltto
Fagotto
Corno I
Corno II
Vcllo I
Vcllo II
Vcllo III
Cb

A Tempo 15 16 17

Fl
ob
cl
Fg
Cor
Trp
Tob
I Fltto
II Fltto
Fagotto
Corno I
Corno II
Vcllo I
Vcllo II
Vcllo III
Cb

A Tempo

Handwritten musical score for measures 26-29. The score includes parts for Flute (Fl), Oboe (Ob), Clarinet (Cl), Bassoon (Fg), Cor Anglais (Cor), Trumpet (Tup), Trombone (Tbn), Percussion (I Tamb., II Baco), Piccolo (piccolo), Violin I (vln I), Violin II (vln II), Viola (vla), Violoncello (vcl), and Contrabasso (cb). The music features various dynamics such as *f*, *ff*, *mf*, and *pp*, along with articulation marks like accents and slurs. Measure numbers 26, 27, 28, and 29 are clearly marked at the top of the staves.

Handwritten musical score for measures 30-33. This section includes parts for Percussion (I Ptho, II Trianglo), Violin I (vln I), Violin II (vln II), Viola (vla), Violoncello (vcl), and Contrabasso (cb). The music is characterized by dynamic markings such as *p*, *mp*, and *pp*, and includes specific performance instructions like *arco* and *pizz*. Measure numbers 30, 31, 32, and 33 are indicated at the top of the staves.

-290- Poco rall...

34 35 36 37

Fl
Fp
E pto
trngl
Hamb
basso
vln I
vln II
vln
vlc
cb

38 39 40 41

ob
cl
E pto
trngl
Hamb
basso
vln I
vln II
vln
vlc
cb

Handwritten musical score for a symphony orchestra, measures 13, 14, and 15. The score includes parts for Flute (Fl), Oboe (ob), Clarinet (cl), Bassoon (Fg), Cor Anglais (Cor), Trumpet (Trp), Trombone (Tb), Percussion (Perc), Violin I (vln I), Violin II (vln II), Viola (vla), Violoncello (vcl), and Double Bass (cb). Dynamics range from piano (p) to fortissimo (f). The score is written in a major key with a key signature of one sharp (F#).

Instrument	Measure 13	Measure 14	Measure 15
Fl	$\#p$	$\#p$ mf	$\#p$ f
ob	$\#p$	$\#p$ mf	$\#p$ mf
cl	$\#p$	$\#p$ mf	$\#p$ mf
Fg	$\#p$	$\#p$ mf	$\#p$ mf
Cor	$\#p$ f	$\#p$ mf	$\#p$ f
Trp	$\#p$ f	$\#p$ mf	$\#p$ mf
Tb	$\#p$ f	$\#p$ mf	$\#p$ mf
Perc	$\#p$	$\#p$	$\#p$
vln I	$\#p$ f	$\#p$ mf	$\#p$ f
vln II	$\#p$ f	$\#p$ mf	$\#p$ f
vla	$\#p$ f	$\#p$ mf	$\#p$ f
vcl	$\#p$ f	$\#p$ mf	$\#p$ f
cb	$\#p$ f	$\#p$ mf	$\#p$ f

46 47 48 49

Corn
Trumpet
Tuba
I [9. casse]
II [tamb. baco]
Vln I
Vln II
Vla
Vcl
Cb

50 51 52 53

I [alto]
II [trayelo]
Vln I
Vln II
Vla
Vcl
Cb

Handwritten musical score for strings and percussion. The score is divided into three measures, numbered 55, 56, and 57. The instruments listed on the left are:

- Fg (Flute)
- Cor (Cor Anglais)
- tb (Tuba)
- Fg cello (Flute/Cello)
- piccolo
- vlr I (Violin I)
- vlr II (Violin II)
- vla (Viola)
- vcl (Violoncello)
- cb (Contrabasso)

Dynamic markings include *mp*, *p*, and *pp*. The word "Allegro" is written at the bottom right of the score.

Handwritten musical score for woodwinds and strings. The score is divided into three measures, numbered 1, 2, and 3. The instruments listed on the left are:

- ob (Oboe)
- cl (Clarinet)
- Fg (Flute)
- Cor (Cor Anglais)
- I 2 flauto (2 Flutes)
- II 2 clarineti (2 Clarinets)
- vlr I (Violin I)
- vlr II (Violin II)
- vla (Viola)
- vcl (Violoncello)
- cb (Contrabasso)

Lyrics in Italian are written above the woodwind staves:

1. **NARRAZIONE 1**
 EN DEFINITIV, CINE SE ATTA ACUM SI INSUIVI?

2. **STOLERCIUC**
 NUMAI NOI, CEI

3. **STOLERCIUC**
 NUMAI NOI, CEI

Dynamic markings include *mf*, *mp*, and *mf*. The word "Allegro" is written at the bottom right of the score.

4 **VINEREAŢII** 5 **294** 6

DE PAŢĂ. JESI HUMANI UNUL DINTRE NOI PUTEA S-O CHIOARE PE

7 **MARIMAR 1** 8 9

SOZANA. PROTESTEZ! CUM VĂ PUTEŢI DEDUCE CĂ MĂ CĂRĂŢII?

10 **VIVEREMU!** 295

MI PIERI MU CĂNĂȚ ȘI PE NIMEREII. **ANDREI** *DAȚI MI VOIE, DARO PE LAȘULĂ MĂI L CINEVA.* 12

13 **BOLBOCEA!** ANDREI

ȘIȘUR, SUZANA. DAR EA A FOST ASASINATĂ. *MĂI L VORBA DE SUZANA. MĂI L*

16 UN BĂRBAȚ PE ÎNSULĂ, UN NECONȘCUT ÎMBRĂCAT 18 ÎNTR-O SĂRIȚĂ DE PĂȘ.

Handwritten musical score for measures 16-18. The score includes staves for Flute (ob), Clarinet (cl), Trumpet (Fg), Horn (Cor), I Horn, II Horn, Trombone (vln I), Trombone (vln II), Viola (vla), Violoncello (vcl), and Double Bass (cb). The music is in a key with one sharp (F#) and a 2/4 time signature. Dynamics include mp, f, and sf. The lyrics are written above the staves.

19 HARA 20 ZERTĂȚI-L VĂ ROG, SĂ ARE FEBRĂ. ANDREI 21 SĂ HĂMĂ FEBRĂ, .. SĂ AM, SĂ AM

Handwritten musical score for measures 19-21. The score includes staves for Flute (ob), Clarinet (cl), Trumpet (Fg), Horn (Cor), I Horn, II Horn, Trombone (vln I), Trombone (vln II), Viola (vla), Violoncello (vcl), and Double Bass (cb). The music is in a key with one sharp (F#) and a 2/4 time signature. Dynamics include f and sf. The lyrics are written above the staves.

HADE NICI O IMPORTANȚĂ. PE VASUL CU CARE AM VENIT SA AFLAM SI UN BARBOS
FOARTE CURIOS ZHBRACAT. EU UNUL AM CREDEAM CA FACE PARTE DIN MEMBRII ECHIPAJULUI,
IAR CEI DOI MARCHARI S-AM PROMITUT CA INDIVIDU E CU NOI.

ob

cl

Fg

Cor

I [Horn]

II [Bongo]

I vln I

II vln II

vla

vcl

cb

25 **ARIANA**

26

27

IAR CE SA CARTE UN NECHINOSUT PE INSULA ?

ob

cl

Fg

Cor

I [Horn]

II [Bongo]

vln I

vln II

vla

vcl

cb

28

ce să i fi făcut cinta fara? ²⁹ **SPOLERĂC!** | și unde ³⁰ poate fi ascuț?

ob
cl
Fg
Cor
I + tom
II bongo
vln I
vln II
vla
vlc
cb

31

BILBOCET!

32

33

unde să fie? A fugit, n-avea grijă! PUN UN PĂRĂU : BARLA NU MAI

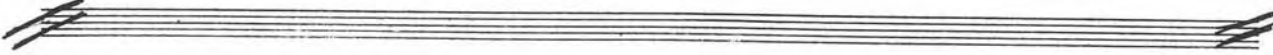
vln I
vln II
vla
vlc
cb
I + tom
II bongo

Presto (♩. = ♩)

I/ptto

2 3 4 5

p *mp* *p* *mp* *p*



Fl
cl
Fg
Cor

7 8 9

mf *f* *mf* *f* *mf* *f*

I/ptto
trapezolo
II/taub
pice

mf *f* *mf* *f*

vlr I
vlr II
vla
vle
cb

mf *f* *mf* *f*

Handwritten musical score for measures 11, 12, and 13. The score includes parts for Clarinet (Cl), Flute (Flp), Oboe (I/Otto), Percussion (triangle, tambourine, bass drum), Violin I (vln I), Violin II (vln II), Viola (vla), Violoncello (vlc), and Contrabass (cb). Measure 11 is marked with a double bar line. Measure 12 is marked "poco rall..." and measure 13 is marked "Accl...". Dynamics include *p*, *mf*, *mp*, and *f*. The percussion part shows rhythmic patterns with triangle, tambourine, and bass drum.

Handwritten musical score for measures 7, 8, and 9. The score includes parts for Flute (Fl), Clarinet (Cl), Flute (Flp), Oboe (Obo), Oboe (I/Otto), Percussion (triangle, tambourine, bass drum), Violin I (vln I), Violin II (vln II), Viola (vla), Violoncello (vlc), and Contrabass (cb). Measures 7, 8, and 9 are marked with measure numbers and dynamic markings such as *mf*, *f*, *pp*, *p*, *mp*, and *mpo*. The percussion part shows rhythmic patterns with triangle, tambourine, and bass drum.

302 *And.*

10 *And.* 11 *And.* 12 *And. rall.* 13 *And.*

Cl *And.*

Trp *And.*

I Flto *And.*

II Flto *And.*

Flauto *And.*

Flauto *And.*

ob *And.*

cb *And.*

vi I *And.*

vi II *And.*

vi III *And.*

vc *And.*

cb *And.*

14 *And.* 15 *And.* 16 *And.* 17 *And.*

Fl *And.*

ob *And.*

Cl *And.*

Trp *And.*

Cor *And.*

Trp *And.*

Trb *And.*

I Flto *And.*

II Flto *And.*

Flauto *And.*

Flauto *And.*

ob *And.*

cb *And.*

vi I *And.*

vi II *And.*

vi III *And.*

vc *And.*

cb *And.*

Handwritten musical score for measures 19 through 25. The score is written for a large ensemble including Flute (Fl), Oboe (ob), Clarinet (cl), Saxophone (Sax), Trumpet (Tpt), Trombone (Tbn), Percussion (Perc), Piano (pno), and Double Bass (db). The notation includes various musical symbols such as notes, rests, dynamics (p, mp, mf, f), and articulation marks. Measure 19 is marked with '19', measure 20 with '20', and measure 21 with '21'. Measure 22 is marked with '22', measure 23 with '23', and measure 24 with '24 Poco rall.'. Measure 25 is marked with '25'. The score is written in a single system with multiple staves for each instrument.

Handwritten musical score for measures 26-29. The score includes parts for Flute (Fl), Oboe (Ob), Clarinet (Cl), Bassoon (Fg), Cor Anglais (Cor), Trumpet (Trp), Trombone (Tbn), II Harp (II Hrp), III Tambourine (III Tamb), Cello (Cb), and Double Bass (Cb). The tempo is marked *Allegro*. Measure numbers 26, 27, 28, and 29 are indicated at the top of the staves. The music features various dynamics such as *f* and *ff*, and includes articulation marks like accents and slurs. The key signature changes from one flat to two flats between measures 27 and 28.

Handwritten musical score for measures 30-33. The score includes parts for II Flute (II Flto), II Clarinet (II Clar), Violin I (vln I), Violin II (vln II), Viola (vla), and Cello (Cb). Measure numbers 30, 31, 32, and 33 are indicated at the top of the staves. The tempo is marked *Allegro*. The music features dynamics such as *mp*, *p*, and *pp*, and includes articulation marks like accents and slurs. The key signature changes from two flats to one flat between measures 32 and 33.

Handwritten musical score for measures 34-37. The score includes staves for Flute (Fl), Trumpet (Trp), I Horn (I [ptto]), II Horn (II [traypla, tamb. basco]), Violin I (vln I), Violin II (vln II), Viola (vln), Violoncello (vln), and Contrabass (cb). Measure numbers 34, 35, 36, and 37 are indicated above the staves. The music features various notes, rests, and dynamic markings.

Handwritten musical score for measures 38-41. The score includes staves for Oboe (ob), Clarinet (cl), I Horn (I [ptto]), II Horn (II [traypla, tamb. basco]), Violin I (vln I), Violin II (vln II), Viola (vln), Violoncello (vln), and Contrabass (cb). Measure numbers 38, 39, 40, and 41 are indicated above the staves. The music features various notes, rests, and dynamic markings.

Handwritten musical score for a symphony orchestra, measures 122-125. The score includes parts for Flute (Fl), Oboe (ob), Clarinet (cl), Bassoon (Fg), Horn (Gr), Trumpet (Trp), Trombone (Tb), Percussion (Perc), Violin I (vln I), Violin II (vln II), Viola (vln), Violoncello (vcl), and Contrabass (cb). The music is in a key with one sharp (F#) and a common time signature. Dynamics range from piano (p) to fortissimo (f). The score is divided into four measures, with measure numbers 122, 123, 124, and 125 indicated at the top of each column. The percussion part includes Cymbals (Cym), Snare (Sn), and Bass Drum (Bd). The string parts include Violin I, Violin II, Viola, Violoncello, and Contrabass. The woodwind parts include Flute, Oboe, Clarinet, and Bassoon. The brass parts include Horn, Trumpet, and Trombone. The score is written in a standard musical notation with stems, beams, and various dynamic markings.

Handwritten musical score for measures 46-49. The score includes parts for:

- Cornet (Cot)
- Trumpet (Trp)
- Trombone (T/b)
- I. Clarinet (Cl)
- II. Clarinet (Cl)
- III. Bassoon (Fag)
- IV. Bassoon (Fag)
- Oboe I (ob I)
- Oboe II (ob II)
- Violin I (vln I)
- Violin II (vln II)
- Viola (vcl)
- Cello (vcl)
- Double Bass (cb)

Measures 46, 47, 48, and 49 are marked at the top of the system. Dynamics include *mf*, *mp*, *up*, *p*, and *f*. The notation features various note values, rests, and slurs.

Handwritten musical score for measures 50-53. The score includes parts for:

- I. Trombone (T/b)
- II. Trombone (T/b)
- Oboe I (ob I)
- Oboe II (ob II)
- Violin I (vln I)
- Violin II (vln II)
- Viola (vcl)
- Cello (vcl)
- Double Bass (cb)

Measures 50, 51, 52, and 53 are marked at the top of the system. Dynamics include *mp*, *up*, *p*, and *f*. The notation features various note values, rests, and slurs.

54 55 56 57

Trp
Cor
tb
Tg. cello
piano
vln I
vln II
vla
vlc
cb

Nr. 11

Fl *mp sempre*

Ob *mp sempre*

Cl *mp sempre*

Fg *mp sempre*

Cor

Top

Tob

piano *mp sempre*

Tpt tom *mp*

Xyl *mp*

vln I *mp*

vln II *mp*

vla *mp*

vlc *mp*

cb *mp*

- 3/4

This is a handwritten musical score for a symphony orchestra, consisting of 15 staves. The score is divided into three measures, with the first measure containing a rehearsal mark '6' and the second measure containing a rehearsal mark '7'. The third measure is marked with a key signature change to one sharp (F#) and a time signature of 3/4. The instruments and their parts are as follows:

- Flute (Fl):** Part 1 and 2, both starting in the third measure.
- Oboe (Ob):** Part 1 and 2, both starting in the third measure.
- Clarinet (Cl):** Part 1 and 2, both starting in the second measure.
- Bassoon (Fg):** Part 1 and 2, both starting in the second measure.
- Cor Anglais (Cor):** Part 1 and 2, both starting in the first measure.
- Trumpet (Tpt):** Part 1 and 2, both starting in the first measure.
- Trombone (Ttb):** Part 1 and 2, both starting in the first measure.
- Piano (piano):** Part 1 and 2, both starting in the first measure.
- Timpani (Ttom):** Part 1 and 2, both starting in the first measure.
- Violin (vln):** Part I and II, both starting in the third measure.
- Viola (vla):** Part I and II, both starting in the third measure.
- Cello (vlc):** Part I and II, both starting in the third measure.
- Double Bass (cb):** Part I and II, both starting in the third measure.

The score includes various musical notations such as notes, rests, accidentals (sharps), and dynamic markings like *mp* (mezzo-piano) and *mf* (mezzo-forte). The woodwind and string parts show melodic lines, while the piano part features chordal textures and arpeggiated figures.

Fl
ob
cl
Fg
Cor
Tpt
Ttb
piano
Vln I
Vln II
Vcl
Cb

Handwritten musical score for a symphony orchestra. The score is written on multiple staves, with measures 15 and 16 indicated at the top. The instruments listed on the left are:

- Fl (Flute)
- Ob (Oboe)
- Cl (Clarinet)
- Fg (Fagott/Bassoon)
- Cor (Corni)
- Trp (Trumpets)
- Tb (Trombones)
- frans (French Horns)
- I [3+ tom (Tom-toms)
- II [xyl (Xylophone)
- vl I (Violin I)
- vl II (Violin II)
- vla (Viola)
- vb (Violoncello)
- cb (Contrabasso)

The score includes various musical notations such as notes, rests, and dynamic markings like *mp* and *pp*. The key signature is one sharp (F#).

Handwritten musical score for orchestra, measures 18-20. The score is written on multiple staves for various instruments. The measures are numbered 18, 19, and 20 at the top. The instruments listed on the left are: Fl (Flute), ob (Oboe), cl (Clarinet), Fg (Fagott/Bassoon), Cor (Corni), Trp (Trumpets), Tsb (Tromboni), Piano (Piano), II Trom (Tromba II), II Tyl (Tromba I), Vla I (Violini I), Vla II (Violini II), Vla (Viola), and Cb (Violoncello). The notation includes notes, rests, and dynamic markings such as *8_p* and *8_f*. The key signature has one sharp (F#).

Handwritten musical score for a full orchestra. The score is divided into four measures, numbered 21, 22, 23, and 24 at the top. The instruments listed on the left are: Fl (Flute), Ob (Oboe), Cl (Clarinet), Fg (Fagott/Bassoon), Cor (Corni), Trp (Trumpets), Tbn (Trombones), Piano (Piano), Str (Strings), Vln I (Violin I), Vln II (Violin II), Vla (Viola), Vcl (Violoncello), and Cb (Contrabasso). The notation includes various notes, rests, and dynamic markings such as *mp* (mezzo-piano) and *mf* (mezzo-forte). The score is written on multiple staves for each instrument, with some staves showing rests in certain measures.

Handwritten musical score for measures 25, 26, 27, and 28. The score includes parts for Flute (Fl), Oboe (Ob), Clarinet (Cl), Bassoon (Fg), Cor Anglais (Cor), Trumpet (Trp), Trombone (Tb), Piano (piano), I & II Horns (I & II horns), I & II Trumpets (I & II trpts), I & II Violins (I & II vln), I & II Violas (I & II vla), I & II Cellos (I & II vcl), and I & II Double Basses (I & II cb).

Measure 25: Flute, Oboe, Clarinet, Bassoon, and Horns are silent. Cor, Trp, and Tb play a half note with a trill and a dynamic marking of *p*. Piano plays a half note with a trill and a dynamic marking of *mp*. I & II Horns play a half note with a trill and a dynamic marking of *p*. I & II Trpts play a half note with a trill and a dynamic marking of *p*. I & II Vlns play a half note with a trill and a dynamic marking of *p*. I & II Vlas play a half note with a trill and a dynamic marking of *p*. I & II Vcls play a half note with a trill and a dynamic marking of *p*. I & II Cbs play a half note with a trill and a dynamic marking of *p*.

Measure 26: Flute, Oboe, Clarinet, Bassoon, and Horns are silent. Cor, Trp, and Tb play a half note with a trill and a dynamic marking of *mp*. Piano plays a half note with a trill and a dynamic marking of *mf*. I & II Horns play a half note with a trill and a dynamic marking of *mp*. I & II Trpts play a half note with a trill and a dynamic marking of *mp*. I & II Vlns play a half note with a trill and a dynamic marking of *mp*. I & II Vlas play a half note with a trill and a dynamic marking of *mp*. I & II Vcls play a half note with a trill and a dynamic marking of *mp*. I & II Cbs play a half note with a trill and a dynamic marking of *mp*.

Measure 27: Flute, Oboe, Clarinet, Bassoon, and Horns are silent. Cor, Trp, and Tb play a half note with a trill and a dynamic marking of *p*. Piano plays a half note with a trill and a dynamic marking of *mp*. I & II Horns play a half note with a trill and a dynamic marking of *p*. I & II Trpts play a half note with a trill and a dynamic marking of *p*. I & II Vlns play a half note with a trill and a dynamic marking of *p*. I & II Vlas play a half note with a trill and a dynamic marking of *p*. I & II Vcls play a half note with a trill and a dynamic marking of *p*. I & II Cbs play a half note with a trill and a dynamic marking of *p*.

Measure 28: Flute, Oboe, Clarinet, Bassoon, and Horns are silent. Cor, Trp, and Tb play a half note with a trill and a dynamic marking of *mp*. Piano plays a half note with a trill and a dynamic marking of *mf*. I & II Horns play a half note with a trill and a dynamic marking of *mp*. I & II Trpts play a half note with a trill and a dynamic marking of *mp*. I & II Vlns play a half note with a trill and a dynamic marking of *mp*. I & II Vlas play a half note with a trill and a dynamic marking of *mp*. I & II Vcls play a half note with a trill and a dynamic marking of *mp*. I & II Cbs play a half note with a trill and a dynamic marking of *mp*.

Handwritten musical score for a symphony orchestra, measures 29-32. The score includes parts for Flute (Fl), Oboe (ob), Clarinet (cl), Bassoon (Fg), Cor Anglais (Cor), Trumpet (Trp), Trombone (Tb), Piano (piano), I [3rd Tom], II [kettlo], Violin I (vln I), Violin II (vln II), Viola (vla), Violoncello (vcl), and Contrabass (cb). The score is written in 4/4 time and features dynamic markings such as *p*, *mp*, and *mf*. The key signature changes from one sharp (F#) to two sharps (F# and C#) between measures 31 and 32. The piano part includes a trill in measure 29 and a fermata in measure 30. The woodwind parts have various rhythmic patterns and articulations. The strings play sustained chords with dynamic swells.

Handwritten musical score for a symphony orchestra. The score is divided into measures 34, 35, and 36. The instruments listed on the left are:

- Fl (Flute)
- ob (Oboe)
- cl (Clarinet)
- Fg (Fagott/Bassoon)
- Cor (Corni)
- Top (Trombe)
- Tb (Trombe)
- primo (Violini I)
- II (Violini II)
- III (Violini III)
- vi (Viola)
- vcl (Violoncello)
- cb (Contrabbasso)

The score includes various musical notations such as notes, rests, and dynamic markings. The dynamic marking *mp sempre* is written in the lower woodwind and string sections. The page number 311 is written at the top center.

Handwritten musical score for measures 37-40. The score is arranged in a standard orchestral layout with the following parts from top to bottom:

- Flute (Fl)
- Oboe (Ob)
- Clarinet (Cl)
- Trumpet (Tr)
- Cornet (Co)
- Trumpet (Tp)
- Trombone (Tb)
- Piano (piano)
- First Violin (Ist Viol)
- Second Violin (II Viol)
- Violoncello (Vcl)
- Double Bass (Cb)

Measures 37, 38, 39, and 40 are clearly marked. The notation includes various rhythmic values, accidentals (sharps and naturals), and rests. The piano part shows a complex texture with multiple voices. The string parts are mostly sustained notes or simple rhythmic patterns. The percussion parts (Co, Tp, Tb) show rhythmic accompaniment with notes and rests.

Handwritten musical score for measures 12, 13, and 14. The score includes parts for Flute (Fl), Oboe (ob), Clarinet (cl), Bassoon (Fg), Cor Anglais (Cor), Trumpet (Trp), Trombone (Tb), Piano (Piano), II Flute (II Flto), II Oboe (II Obo), Violin I (vln I), Violin II (vln II), Viola (vle), Violoncello (vcl), and Contrabass (cb). The score features dynamic markings such as *p*, *mp*, and *tr* (trills). The piano part includes a trill and a tremolo. The strings (vln I, vln II, vle, vcl, cb) are marked with *mf* and *p*. The woodwinds (Cor, Trp, Tb) also feature *p* and *mp* markings. The score is written in a standard musical notation with a treble clef and a key signature of one flat.

Handwritten musical score for measures 45, 46, 47, and 48. The score includes parts for Flute (Fl), Oboe (ob), Clarinet (cl), Bassoon (Fg), Horns (Gr), Trumpets (Trp), Trombones (Trb), Piano (piano), Violins I (VI), Violins II (VII), Viola (vla), Violoncello (vcl), and Contrabass (Cb). The score features dynamic markings (p, mp, mf, f) and articulation (accents, slurs). The piano part includes a complex chordal texture with slurs and dynamics. The string parts (VI, VII, vla, vcl, Cb) include a section marked 'ord.' (ordine) with specific rhythmic patterns and dynamics.