

# Three fugues for the season of Easter Op.21

## Fuga I. Christus ist erstanden

Transcribed by Glenn Crooks

J.G. Albrechtsberger

Maestoso

7

12

16

21

25

30

System 1 (Measures 30-33): The piece is in B-flat major (two flats). Measure 30 features a treble staff with a half note B-flat and a whole note F, and a bass staff with a whole note B-flat. Measure 31 has a treble staff with a half note B-flat and a whole note G, and a bass staff with a half note B-flat and a whole note F. Measure 32 has a treble staff with a half note B-flat and a whole note A, and a bass staff with a half note B-flat and a whole note G. Measure 33 has a treble staff with a half note B-flat and a whole note B, and a bass staff with a half note B-flat and a whole note A.

34

System 2 (Measures 34-37): Measure 34 has a treble staff with a half note B-flat and a whole note C, and a bass staff with a half note B-flat and a whole note B. Measure 35 has a treble staff with a half note B-flat and a whole note D, and a bass staff with a half note B-flat and a whole note C. Measure 36 has a treble staff with a half note B-flat and a whole note E, and a bass staff with a half note B-flat and a whole note D. Measure 37 has a treble staff with a half note B-flat and a whole note F, and a bass staff with a half note B-flat and a whole note E.

38

System 3 (Measures 38-41): Measure 38 has a treble staff with a half note B-flat and a whole note G, and a bass staff with a half note B-flat and a whole note F. Measure 39 has a treble staff with a half note B-flat and a whole note A, and a bass staff with a half note B-flat and a whole note G. Measure 40 has a treble staff with a half note B-flat and a whole note B, and a bass staff with a half note B-flat and a whole note A. Measure 41 has a treble staff with a half note B-flat and a whole note C, and a bass staff with a half note B-flat and a whole note B.

42

System 4 (Measures 42-45): Measure 42 has a treble staff with a half note B-flat and a whole note D, and a bass staff with a half note B-flat and a whole note C. Measure 43 has a treble staff with a half note B-flat and a whole note E, and a bass staff with a half note B-flat and a whole note D. Measure 44 has a treble staff with a half note B-flat and a whole note F, and a bass staff with a half note B-flat and a whole note E. Measure 45 has a treble staff with a half note B-flat and a whole note G, and a bass staff with a half note B-flat and a whole note F.

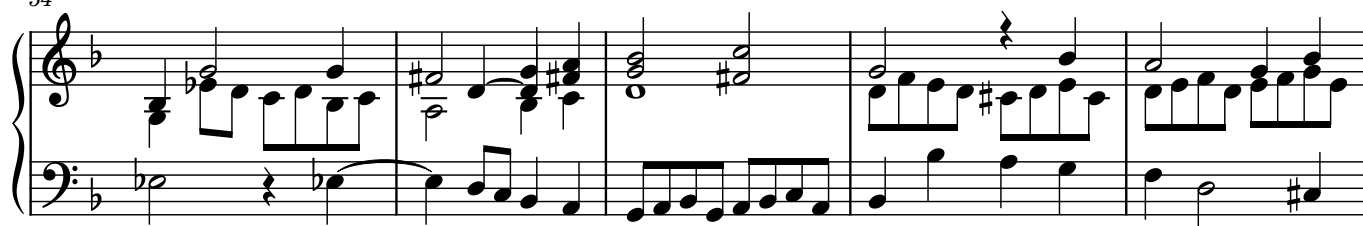
46

System 5 (Measures 46-49): Measure 46 has a treble staff with a half note B-flat and a whole note A, and a bass staff with a half note B-flat and a whole note G. Measure 47 has a treble staff with a half note B-flat and a whole note B, and a bass staff with a half note B-flat and a whole note A. Measure 48 has a treble staff with a half note B-flat and a whole note C, and a bass staff with a half note B-flat and a whole note B. Measure 49 has a treble staff with a half note B-flat and a whole note D, and a bass staff with a half note B-flat and a whole note C.

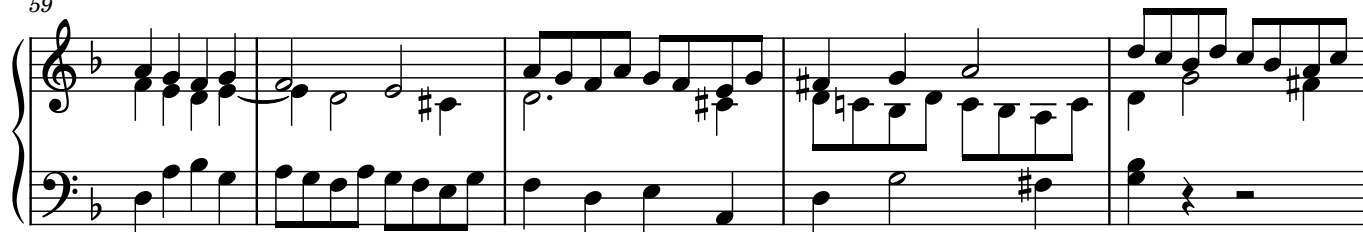
50

System 6 (Measures 50-53): Measure 50 has a treble staff with a half note B-flat and a whole note E, and a bass staff with a half note B-flat and a whole note D. Measure 51 has a treble staff with a half note B-flat and a whole note F, and a bass staff with a half note B-flat and a whole note E. Measure 52 has a treble staff with a half note B-flat and a whole note G, and a bass staff with a half note B-flat and a whole note F. Measure 53 has a treble staff with a half note B-flat and a whole note A, and a bass staff with a half note B-flat and a whole note G.

54



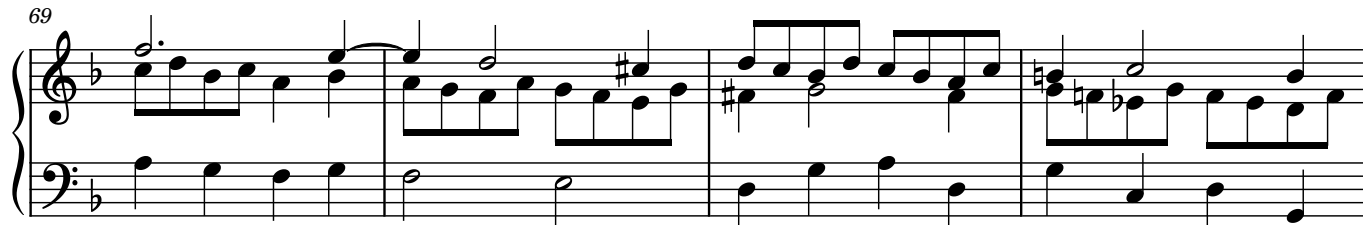
59



64



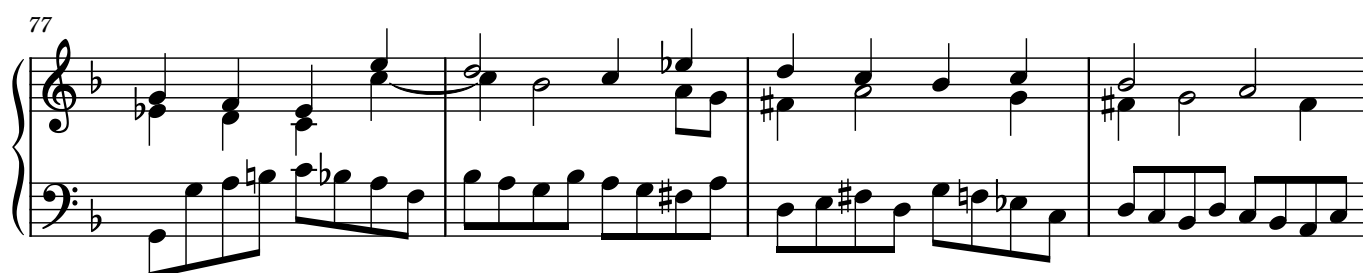
69



73



77



81

Measures 81-85 of a piano piece. The key signature has one flat (B-flat). The melody in the right hand features eighth-note runs and chords, while the left hand provides a steady accompaniment of eighth notes.

86

Measures 86-91. The right hand continues with melodic lines, including some sixteenth-note passages. The left hand maintains a consistent eighth-note accompaniment.

92

Measures 92-96. The right hand has a more active melody with eighth-note runs. The left hand's accompaniment remains steady.

97

Measures 97-101. The right hand features a melodic line with some grace notes. The left hand continues with eighth-note accompaniment.

102

Measures 102-105. The right hand has a melodic line with some grace notes. The left hand continues with eighth-note accompaniment.

106

Measures 106-109. The right hand features a melodic line with a trill (tr) in measure 108. The left hand continues with eighth-note accompaniment.