



# Guy Bergeron

Canada, Québec

## Basin Street blues (jazz combo) Williams, Spencer

### About the artist

Guy Bergeron was born the 13th of October 1964 in Loretteville, Province of Quebec, Canada. He graduated in music: in 1990, 3rd cycle in composition at the Conservatoire de musique of Quebec; in 1986, collegial grade (DEC) in pop music, Cegep of Drummondville, and in 1984, collegial grade (DEC) in music, Cegep of Ste-Foy, with guitar as first instrument. He was also a student in jazz interpretation from 1992 until 1994 at the University of Montreal (electric guitar) and he studied computer-assisted music at the Musitechnic School in Montreal. He plays the guitar (classical, electric, acoustic, synthesizer), the banjo, the mandolin and the bass. He's been earning his living with music for more than 25 years, as a professional musician, a composer, an arranger and also as a studio engineer as he manages his own studio.

**Qualification:** Diplome d'étude collégial en musique.  
3e cycle en composition au conservatoire de musique de Québec.

**Associate:** SOCAN - IPI code of the artist : 206325403

**Artist page :** <https://www.free-scores.com/Download-PDF-Sheet-Music-guy-bergeron.htm>

### About the piece



**Title:** Basin Street blues [jazz combo]  
**Composer:** Williams, Spencer  
**Arranger:** Bergeron, Guy  
**Copyright:** Copyright © Guy Bergeron  
**Publisher:** Bergeron, Guy  
**Instrumentation:** Trumpet, 2 saxophones, piano, bass, drums  
**Style:** Jazz

### Guy Bergeron on [free-scores.com](https://www.free-scores.com)

#### LICENSE

This sheet music requires an authorization

- for public performances
- for use by teachers

**Buy this license at :**

<https://www.free-scores.com/licence-partition-uk.php?partition=70289>



- listen to the audio
- share your interpretation
- comment
- pay the licence
- contact the artist

Prohibited distribution on other website.

SCORE

# BASIN STREET BLUES

SPENCER WILLIAMS (1889 - 1965)

ARR.: GUY BERGERON

MEDIUM SWING

$\text{♩} = 112$

TRUMPET IN B $\flat$

ALTO SAX.

TENOR SAX.

PIANO

BASS GUITAR

DRUM SET

$B^{\flat}$  C $_{\text{MIN}}7$  C $^{\sharp}$ DIM  $B^{\flat}/D$   $B^{\flat\flat}$

B $\flat$  TPT.

A. SAX.

T. SAX.

PNO.

BASS

D. S.

$B^{\flat}$   $B^{\flat}7/D$   $E^{\flat}6$  E DIM  $B^{\flat}/F$   $B^{\flat\flat}$   $B^{\flat}$  C $_{\text{MIN}}7$  C $^{\sharp}$ DIM  $B^{\flat}/D$

guyt@rebergeron@videotron.ca

BASIN STREET BLUES

B♭ TPT. 11

A. SX. 11

T. SX. 11

PNO. 11

BASS 11

D. S. 11

*B<sup>b</sup> B<sup>b</sup> B<sup>b7</sup>/D E<sup>b6</sup> E<sup>DIM</sup> B<sup>b</sup>/F*

*B<sup>b</sup> B<sup>b</sup> B<sup>b7</sup>/D E<sup>b6</sup> E<sup>DIM</sup> B<sup>b</sup>/F*

(A)

B♭ TPT. 16

A. SX. 16

T. SX. 16

PNO. 16

BASS 16

D. S. 16

*mf mp mp mp*

*B<sup>b6</sup> B<sup>b</sup> D<sup>7</sup> G<sup>7</sup> A<sup>b6</sup> G<sup>7</sup> C<sup>9</sup>*

*B<sup>b6</sup> B<sup>b</sup> D<sup>7</sup> G<sup>7</sup> A<sup>b6</sup> G<sup>7</sup> C<sup>9</sup>*

LIGHT SWING

*mp*

BASIN STREET BLUES

22

B. TPT.

A. SX.

T. SX.

PNO.

BASS

D. S.

22

F<sup>7</sup> B<sup>b</sup>/D D<sup>b</sup>DIM C<sup>MIN</sup><sup>7</sup> F<sup>7</sup> B<sup>b</sup> D<sup>7</sup> G<sup>7</sup>

F<sup>7</sup> B<sup>b</sup>/D D<sup>b</sup>DIM C<sup>MIN</sup><sup>7</sup> F<sup>7</sup> B<sup>b</sup> D<sup>7</sup> G<sup>7</sup>

22

28

B. TPT.

A. SX.

T. SX.

PNO.

BASS

D. S.

28

RIT. (LAST TIME ONLY) FINE

SOLOS SECTION

C

G

C

A<sup>b6</sup> G<sup>7</sup> C<sup>9</sup> F<sup>7</sup> B<sup>b</sup> E<sup>b9</sup> B<sup>b</sup> F<sup>7</sup> B<sup>b</sup>

A<sup>b6</sup> G<sup>7</sup> C<sup>9</sup> F<sup>7</sup> B<sup>b</sup> E<sup>b9</sup> B<sup>b</sup> F<sup>7</sup> B<sup>b</sup>

FINE

FINE

FINE

FINE

28

**4** **BASIN STREET BLUES**

E<sup>7</sup> A<sup>7</sup> B<sup>b6</sup> A<sup>7</sup> D<sup>9</sup> G<sup>7</sup> C/E E<sup>bDIM</sup> D<sup>MIN7</sup> G<sup>7</sup>

B<sup>b</sup> TPT.

A. SX.

T. SX.

PNO.

BASS

D. S.

34

C E<sup>7</sup> A<sup>7</sup> B<sup>b6</sup> A<sup>7</sup> D<sup>9</sup> G<sup>7</sup> C A<sup>7</sup>

B<sup>b</sup> TPT.

A. SX.

T. SX.

PNO.

BASS

D. S.

41

BASIN STREET BLUES

1. **D<sub>MIN</sub>7** **G<sup>7</sup>** 2. **D<sub>MIN</sub>7** **G<sup>7</sup>** **D.S. AL FINE**

B♭ Tpt. 48

A. Sax. 48

T. Sax. 48

PNO. 48 **C<sub>MIN</sub>7** **F<sup>7</sup>** **C<sub>MIN</sub>7** **F<sup>7</sup>** *mf*

BASS 48 **C<sub>MIN</sub>7** **F<sup>7</sup>** **C<sub>MIN</sub>7** **F<sup>7</sup>**

D. S. 48

TRUMPET IN B $\flat$

# BASIN STREET BLUES

SPENCER WILLIAMS (1889 - 1965)

ARR.: GUY BERGERON

MEDIUM SWING

$\text{♩} = 112$

5

9

13

(A)

21

25

29

*f*

*mf*

RIT. (LAST TIME ONLY) FINE

[guytarelbergeron@videotron.ca](mailto:guytarelbergeron@videotron.ca)

SOLOS SECTION

33

C E<sup>7</sup> A<sup>7</sup> B<sup>b6</sup> A<sup>7</sup>

37

D<sup>9</sup> G<sup>7</sup> C/E E<sup>bDIM</sup> D<sup>MIN7</sup> G<sup>7</sup>

41

C E<sup>7</sup> A<sup>7</sup> B<sup>b6</sup> A<sup>7</sup>

45

D<sup>9</sup> G<sup>7</sup> C A<sup>7</sup> 1 D<sup>MIN7</sup> G<sup>7</sup> 2 D<sup>MIN7</sup> G<sup>7</sup> D.S. AL FINE

*mf*



ALTO SAX.

# BASIN STREET BLUES

SPENCER WILLIAMS (1889 - 1965)

ARR.: GUY BERGERON

MEDIUM SWING

♩ = 112

Trumpet in Bb



(A)

guytarelbergeron@videotron.ca

SOLOS SECTION

33

G B<sup>7</sup> E<sup>7</sup> F<sup>6</sup> E<sup>7</sup>

37

A<sup>9</sup> D<sup>7</sup> G/B B<sup>b</sup><sub>DIM</sub> A<sup>MIN</sup><sup>7</sup> D<sup>7</sup>

41

G B<sup>7</sup> E<sup>7</sup> F<sup>6</sup> E<sup>7</sup>

45

A<sup>9</sup> D<sup>7</sup> G E<sup>7</sup> 1. 2. A<sup>MIN</sup><sup>7</sup> D<sup>7</sup> D.S. AL FINE

TENOR SAX.

# BASIN STREET BLUES

SPENCER WILLIAMS (1889 - 1965)

ARR.: GUY BERGERON

MEDIUM SWING

♩ = 112

Tru<sup>mp</sup>et in B<sup>b</sup>

*f*

1

5

9

13

(A)

*mp*

21

25

29

RIT. (LAST TIME ONLY) FINE

*guyt@videotron.ca*

SOLOS SECTION

C E<sup>7</sup> A<sup>7</sup> B<sup>b6</sup> A<sup>7</sup>

33

D<sup>9</sup> G<sup>7</sup> C/E E<sup>bDIM</sup> D<sup>MIN7</sup> G<sup>7</sup>

37

C E<sup>7</sup> A<sup>7</sup> B<sup>b6</sup> A<sup>7</sup>

41

D<sup>9</sup> G<sup>7</sup> C A<sup>7</sup> 1. 2. D<sup>MIN7</sup> G<sup>7</sup> D.S. AL FINE

45

PIANO

# BASIN STREET BLUES

SPENCER WILLIAMS (1889 - 1965)

ARR.: GUY BERGERON

MEDIUM SWING

♩ = 112

Trumpet in Bb

B<sup>b</sup> C<sup>MIN</sup>7 C<sup>#</sup>DIM B<sup>b</sup>/D

B<sup>b</sup>6

B<sup>b</sup> B<sup>b</sup>7/D E<sup>b</sup>6 E<sup>DIM</sup> B<sup>b</sup>/F B<sup>b</sup>6

B<sup>b</sup> C<sup>MIN</sup>7 C<sup>#</sup>DIM B<sup>b</sup>/D B<sup>b</sup>

B<sup>b</sup> B<sup>b</sup>7/D E<sup>b</sup>6 E<sup>DIM</sup> B<sup>b</sup>/F B<sup>b</sup>6

(A) B<sup>b</sup> D<sup>7</sup> G<sup>7</sup> A<sup>b</sup>6 G<sup>7</sup>

C<sup>9</sup> F<sup>7</sup> B<sup>b</sup>/D D<sup>b</sup>DIM C<sup>MIN</sup>7 F<sup>7</sup>

B<sup>b</sup> D<sup>7</sup> G<sup>7</sup> A<sup>b</sup>6 G<sup>7</sup>

C<sup>9</sup> F<sup>7</sup> B<sup>b</sup> E<sup>b</sup>9 B<sup>b</sup> FINE F<sup>7</sup>

guytarelbergeron@videotron.ca

SOLOS SECTION

33

B<sup>b</sup> D<sup>7</sup> G<sup>7</sup> A<sup>b6</sup> G<sup>7</sup>

37

C<sup>9</sup> F<sup>7</sup> B<sup>b</sup>/D D<sup>b</sup>DIM CMIN<sup>7</sup> F<sup>7</sup>

41

B<sup>b</sup> D<sup>7</sup> G<sup>7</sup> A<sup>b6</sup> G<sup>7</sup>

45

C<sup>9</sup> F<sup>7</sup> B<sup>b</sup> G<sup>7</sup> 1. CMIN<sup>7</sup> F<sup>7</sup> 2. CMIN<sup>7</sup> F<sup>7</sup> D.S. AL FINE

BASS GUITAR

# BASIN STREET BLUES

SPENCER WILLIAMS (1889 - 1965)

ARR.: GUY BERGERON

MEDIUM SWING

♩ = 112

Trumpet in Bb

*f*  $B^b$   $C^{MIN7}$   $C^{\#DIM}$   $B^b/D$   $B^{b6}$

$B^b$   $B^{b7}/D$   $E^{b6}$   $E^{DIM}$   $B^b/F$   $B^{b6}$

5

$B^b$   $C^{MIN7}$   $C^{\#DIM}$   $B^b/D$   $B^b$

9

$B^b$   $B^{b7}/D$   $E^{b6}$   $E^{DIM}$   $B^b/F$   $B^{b6}$

13

**A**  $B^b$   $D^7$   $G^7$   $A^{b6}$   $G^7$

*mp*

$C^9$   $F^7$   $B^b/D$   $D^{bDIM}$   $C^{MIN7}$   $F^7$

21

$B^b$   $D^7$   $G^7$   $A^{b6}$   $G^7$

25

$C^9$   $F^7$   $B^b$   $E^{b9}$   $B^b$   $F^7$

RIT. (LAST TIME ONLY)

FINE

29

SOLOS SECTION

33

B<sup>b</sup> D<sup>7</sup> G<sup>7</sup> A<sup>b6</sup> G<sup>7</sup>

37

C<sup>9</sup> F<sup>7</sup> B<sup>b</sup>/D D<sup>b</sup>DIM C<sup>MIN</sup>7 F<sup>7</sup>

41

B<sup>b</sup> D<sup>7</sup> G<sup>7</sup> A<sup>b6</sup> G<sup>7</sup>

45

C<sup>9</sup> F<sup>7</sup> B<sup>b</sup> G<sup>7</sup> 1. C<sup>MIN</sup>7 F<sup>7</sup> 2. C<sup>MIN</sup>7 F<sup>7</sup> D.S. AL FINE



DRUM SET

# BASIN STREET BLUES

SPENCER WILLIAMS (1889 - 1965)

ARR.: GUY BERGERON

MEDIUM SWING

♩ = 112

Trumpet in Bb

First staff of music for Trumpet in Bb, measures 1-4. It begins with a treble clef and a 4/4 time signature. The first measure contains a quarter rest. The second measure has a half rest. The third measure contains a quarter note G4, a quarter note A4, and a quarter note Bb4. The fourth measure contains a quarter note G4, a quarter note A4, and a quarter note Bb4. A dynamic marking of *f* is above the first measure. A triplet of eighth notes (G4, A4, Bb4) is marked in the fourth measure.

Second staff of music for Trumpet in Bb, measures 5-8. Measure 5 starts with a half rest. Measures 6-8 contain eighth and quarter notes with various dynamics and articulations.

Third staff of music for Trumpet in Bb, measures 9-12. Measure 9 starts with a half rest. Measures 10-12 contain eighth and quarter notes, including a triplet of eighth notes in measure 12.

Fourth staff of music for Trumpet in Bb, measures 13-16. Measure 13 starts with a half rest. Measures 14-16 contain eighth and quarter notes with various dynamics and articulations.

(A)

LIGHT SWING

Fifth staff of music, drum set part, measures 17-20. It consists of a continuous eighth-note pattern (pedal point) across four measures.

*mp*

Sixth staff of music, drum set part, measures 21-24. It consists of a continuous eighth-note pattern (pedal point) across four measures.

Seventh staff of music, drum set part, measures 25-28. It consists of a continuous eighth-note pattern (pedal point) across four measures.

25

RIT. (LAST TIME ONLY)

FINE

Eighth staff of music, drum set part, measures 29-32. It consists of a continuous eighth-note pattern (pedal point) across four measures, ending with a diamond symbol in the final measure.

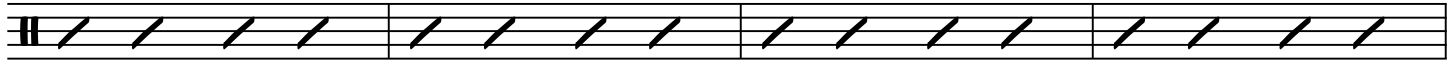
29

[guytorebergeron@videotron.ca](mailto:guytorebergeron@videotron.ca)

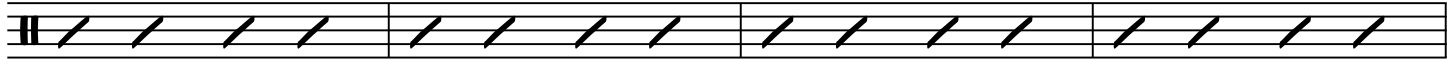
SOLOS SECTION



33



37



41

|  |    |    |
|--|----|----|
|  | 1. | 2. |
|--|----|----|

D.S. AL FINE

45