



# Sadayuki Umezawa

## About the artist

**Artist page :** [www.free-scores.com/Download-PDF-Sheet-Music-sadayuki-umezawa.htm](http://www.free-scores.com/Download-PDF-Sheet-Music-sadayuki-umezawa.htm)

## About the piece

<b>Title:</b>	Fughetta in C minor
<b>Composer:</b>	Umezawa, Sadayuki
<b>Copyright:</b>	Copyright © Sadayuki Umezawa
<b>Style:</b>	Classical
<b>Comment:</b>	I have trouble writing a good episode, and hope to learn it in time. The piece may be suited to play on the piano or on the organ. We are celebrating Miku's Birthday today! "Happy Birthday, Miku!"

Sadayuki Umezawa on [free-scores.com](http://free-scores.com)



This work is not Public Domain. You must contact the artist for any use outside the private area.



- listen to the audio
- share your interpretation
- comment
- contact the artist

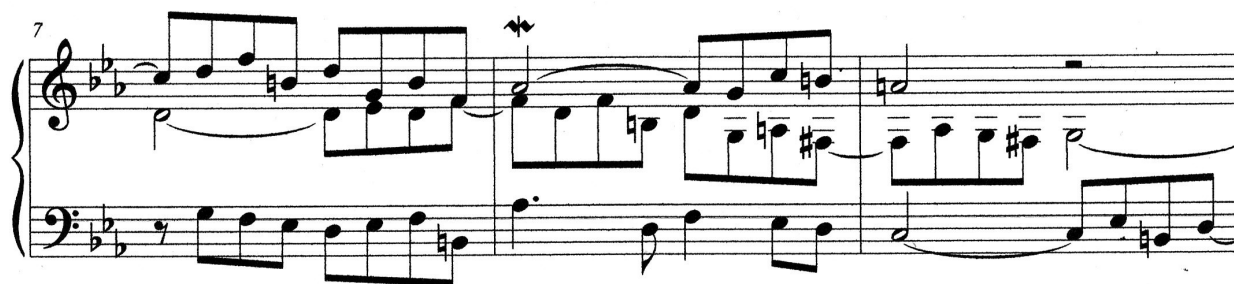
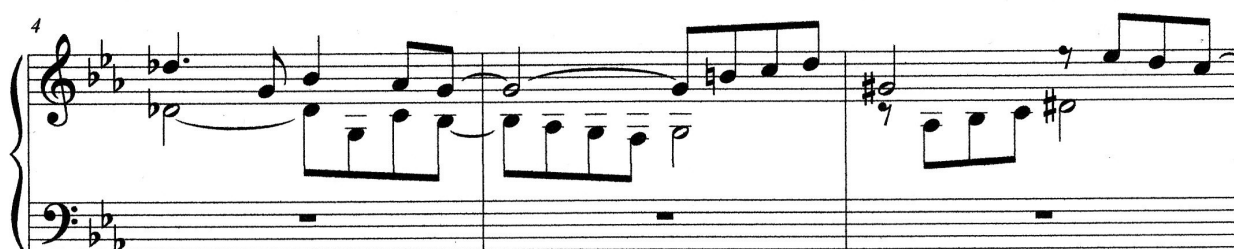


# Fughetta in C minor

Score

For H. Miku

Sadayuki Umezawa



Sadayuki Umezawa 2015 (c) All rights reserved



13

16

19

22

25

The image displays a musical score for a piece titled 'Fughetta in C minor'. The score is written for piano and is organized into five systems, each containing two staves (treble and bass clef). The key signature is C minor, indicated by two flats (Bb and Eb). The time signature is not explicitly shown but is implied to be common time (C). The score begins at measure 13 and ends at measure 25. The notation includes various musical symbols such as notes, rests, accidentals (sharps, flats, naturals), and dynamic markings (e.g., 'f' for fortissimo). The first system (measures 13-15) shows a complex interplay between the two staves. The second system (measures 16-18) features a more active treble staff with frequent sixteenth-note runs. The third system (measures 19-21) has a more melodic treble staff with some sustained notes. The fourth system (measures 22-24) returns to a more rhythmic and active texture. The fifth system (measures 25) concludes the excerpt with a final cadence.



Fughetta in C minor

3

28

The musical score for measures 28-31 of the Fughetta in C minor is presented in a grand staff. The key signature has three flats (B-flat, E-flat, A-flat). Measure 28 begins with a treble clef staff containing a dotted quarter note on G4, followed by eighth notes on A4, B-flat4, and A4, and a half note on G4. The bass clef staff has a whole rest. Measure 29 features a treble clef staff with a half note on G4, a quarter note on F4, and a half note on E4. The bass clef staff contains a half note on C3, a quarter note on D3, and a half note on E3. Measure 30 shows a treble clef staff with a half note on G4, a quarter note on F4, and a half note on E4. The bass clef staff has a whole rest. Measure 31 concludes with a treble clef staff containing a half note on G4, a quarter note on F4, and a half note on E4. The bass clef staff contains a half note on C3, a quarter note on D3, and a half note on E3. The piece ends with a double bar line.