



# Bernard Dewagtere

France, SIN LE NOBLE

## The Coventry Carol Traditional

### About the artist

Doctor in musicology, conductor and composer.

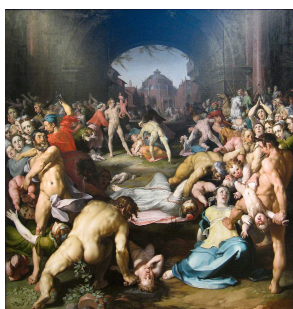
Compositions and arrangements from all eras, in all styles or musical genres and for any instrument or vocal training.

**Qualification:** PhD Musicology

**Associate:** SACEM - IPI code of the artist : 342990

**Artist page :** <https://www.free-scores.com/Download-PDF-Sheet-Music-bernard-dewagtere.htm>

### About the piece



**Title:** The Coventry Carol  
**Composer:** Traditional  
**Arranger:** Dewagtere, Bernard  
**Copyright:** Copyright © Bernard Dewagtere  
**Publisher:** Dewagtere, Bernard  
**Instrumentation:** Baritone saxophone and piano  
**Style:** Christmas - Carols

### Bernard Dewagtere on [free-scores.com](https://www.free-scores.com)

#### LICENSE

This sheet music requires an authorization  
- for public performances  
- for use by teachers

**Buy this license at :**

<https://www.free-scores.com//license?p=aAFIWfZhHC>



- listen to the audio
- share your interpretation
- comment
- pay the licence
- contact the artist

Prohibited distribution on other website.

# The Coventry Carol

Lullay, Thou little tiny Child

Old English Carol (16th Century)

Arr. : Bernard Dewagtere

Saxophone Baryton

Piano

*pp*

This system contains the first six measures of the piece. The Saxophone Baryton part is in treble clef with a key signature of one sharp (F#) and a 3/4 time signature. It consists of six measures of whole rests. The Piano part is in bass clef with a key signature of two flats (Bb, Eb) and a 3/4 time signature. It features a melody in the right hand and a bass line in the left hand. The first measure is marked with a piano-piano (*pp*) dynamic. The piano part ends with a repeat sign at the end of the sixth measure.

Sax. Bar.

Pno

This system contains measures 7 through 12. The Saxophone Baritone part is in treble clef with a key signature of one sharp (F#) and a 3/4 time signature. It consists of six measures of whole rests. The Piano part is in bass clef with a key signature of two flats (Bb, Eb) and a 3/4 time signature. It continues the melody from the previous system. Measures 7 and 8 have a fermata over the first two notes. The piano part ends with a repeat sign at the end of the twelfth measure.

Sax. Bar.

Pno

*p*

This system contains measures 13 through 18. The Saxophone Baritone part is in treble clef with a key signature of one sharp (F#) and a 3/4 time signature. It consists of six measures of whole rests. The Piano part is in bass clef with a key signature of two flats (Bb, Eb) and a 3/4 time signature. It continues the melody from the previous system. Measures 13 and 14 have a fermata over the first two notes. The piano part ends with a repeat sign at the end of the eighteenth measure.

The Coventry Carol

2  
19

Sax. Bar.

Pno

25

Sax. Bar.

Pno

31

*mp*

Sax. Bar.

Pno

*mp*

37

Sax. Bar.

Pno

The Coventry Carol

Sax. Bar. 43 *mf*

Pno 43 *mf*

Sax. Bar. 49

Pno 49

Sax. Bar. 55

Pno 55

Sax. Bar. 61 *f*

Pno 61 *f*

The Coventry Carol

4  
67

Sax. Bar.

Pno

73

Sax. Bar.

Pno

79

Sax. Bar.

Pno

85

Sax. Bar.

Pno

*rit.*