



# Bernard Dewagtere

France, SIN LE NOBLE

## The Coventry Carol (Lullay, Thou little tiny Child) Traditional

### About the artist

Doctor in musicology, conductor and composer.

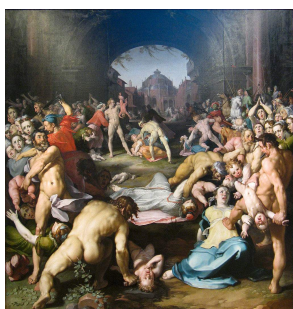
Compositions and arrangements from all eras, in all styles or musical genres and for any instrument or vocal training.

**Qualification:** PhD Musicology

**Associate:** SACEM - IPI code of the artist : 342990

**Artist page :** <https://www.free-scores.com/Download-PDF-Sheet-Music-bernard-dewagtere.htm>

### About the piece



**Title:** The Coventry Carol [Lullay, Thou little tiny Child]

**Composer:** Traditional

**Arranger:** Dewagtere, Bernard

**Copyright:** Copyright © Bernard Dewagtere

**Publisher:** Dewagtere, Bernard

**Instrumentation:** Bass Clarinet and Piano

**Style:** Christmas - Carols

### Bernard Dewagtere on [free-scores.com](https://www.free-scores.com)

#### LICENSE

This sheet music requires an authorization  
- for public performances  
- for use by teachers

**Buy this license at :**

<https://www.free-scores.com//license?p=aUCABeezws>



- listen to the audio
- share your interpretation
- comment
- pay the licence
- contact the artist

Prohibited distribution on other website.

# The Coventry Carol

Lullay, Thou little tiny Child

Old English Carol (16th Century)

Arr. : Bernard Dewagtere

Clarinet Basse

Piano

pp

This system contains the first six measures of the piece. The Clarinet Basse part is a single staff with a treble clef and a 3/4 time signature, showing rests for all six measures. The Piano part consists of two staves (treble and bass clefs) with a 3/4 time signature and a key signature of two flats. The piano part begins with a *pp* dynamic marking. The right hand plays chords, and the left hand plays a simple bass line.

Cl. B.

Pno

This system contains measures 7 through 12. The Clarinet Basse part (Cl. B.) has a treble clef and shows rests for measures 7-11, followed by a whole note in measure 12. The Piano part (Pno) has two staves. The right hand features a melodic line with some grace notes and a key signature change to one flat in measure 12. The left hand provides harmonic support with chords and a bass line.

Cl. B.

Pno

This system contains measures 13 through 18. The Clarinet Basse part (Cl. B.) has a treble clef and shows rests for measures 13-15, followed by a melodic line in measures 16-18 starting with a *p* dynamic. The Piano part (Pno) has two staves. The right hand continues the melodic line with a *p* dynamic in measure 16, while the left hand provides a steady bass line.

The Coventry Carol

Cl. B. <sup>2</sup>/<sub>19</sub>

Pno

19

Detailed description: This system covers measures 19 to 24. The Clarinet B part (top staff) begins with a sharp sign above the first measure. The piano accompaniment (bottom two staves) features a complex texture with many beamed sixteenth notes in the right hand and a steady bass line in the left hand. A fermata is placed over the final measure of the piano part.

Cl. B. <sup>25</sup>

Pno

25

Detailed description: This system covers measures 25 to 30. The Clarinet B part continues with a melodic line. The piano accompaniment shows a change in texture, with more sustained chords and some grace notes in the right hand. A fermata is present at the end of the piano part.

Cl. B. <sup>31</sup> *mp*

Pno *mp*

31

Detailed description: This system covers measures 31 to 36. The Clarinet B part has a melodic line with a sharp sign above the first measure. The piano accompaniment is marked *mp* and consists of a steady bass line and chords in the right hand.

Cl. B. <sup>37</sup>

Pno

37

Detailed description: This system covers measures 37 to 42. The Clarinet B part has a melodic line with a sharp sign above the first measure. The piano accompaniment features a complex texture with many beamed sixteenth notes in the right hand and a steady bass line in the left hand. A fermata is placed over the final measure of the piano part.

The Coventry Carol

43 *mf*

Cl. B.

Pno

49

Cl. B.

Pno

55

Cl. B.

Pno

61 *f*

Cl. B.

Pno

The Coventry Carol

4  
67

Cl. B.

Pno

73

Cl. B.

Pno

79

Cl. B.

Pno

85

Cl. B.

Pno

*rit.*