



Bernard Dewagtere

France, SIN LE NOBLE

The Coventry Carol (Lullay, Thou little tiny Child) Traditional

About the artist

Doctor in musicology, conductor and composer.

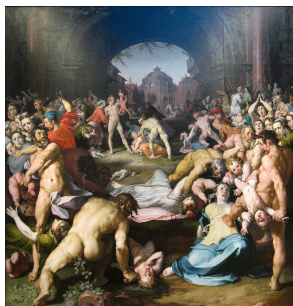
Compositions and arrangements from all eras, in all styles or musical genres and for any instrument or vocal training.

Qualification: PhD Musicology

Associate: SACEM - IPI code of the artist : 342990

Artist page : <https://www.free-scores.com/Download-PDF-Sheet-Music-bernard-dewagtere.htm>

About the piece



Title: The Coventry Carol [Lullay, Thou little tiny Child]

Composer: Traditional

Arranger: Dewagtere, Bernard

Copyright: Copyright © Bernard Dewagtere

Publisher: Dewagtere, Bernard

Instrumentation: Vibraphone or Marimba or Xylophone, piano or organ

Style: Christmas - Carols

Bernard Dewagtere on [free-scores.com](https://www.free-scores.com)

LICENSE

This sheet music requires an authorization
- for public performances
- for use by teachers

Buy this license at :

<https://www.free-scores.com//license?p=aafhG0eH0m>



- listen to the audio
- share your interpretation
- comment
- pay the licence
- contact the artist

Prohibited distribution on other website.

The Coventry Carol

Lullay, Thou little tiny Child

Old English Carol (16th Century)

Arr. : Bernard Dewagtere

Vibraphone

Piano

pp

This system contains the first six measures of the piece. The Vibraphone part consists of six whole rests. The Piano part is in 3/4 time with a key signature of two flats. The right hand plays chords, and the left hand plays a simple bass line. The dynamic marking is *pp*.

Vib.

Pno

This system contains measures 7 through 12. The Vibraphone part has six whole rests. The Piano part continues with chords and a bass line. The dynamic marking is *pp*.

Vib.

Pno

13

p

This system contains measures 13 through 18. The Vibraphone part has six whole rests. The Piano part continues with chords and a bass line. The dynamic marking is *p*.

The Coventry Carol

2
19

Vib.

Pno

25

Vib.

Pno

31

Vib.

Pno

mp

37

Vib.

Pno

The Coventry Carol

43 *mf*

Vib.

Pno

mf

This system contains measures 43 through 48. The vibraphone part (top staff) features a melodic line with eighth and sixteenth notes, starting with a *mf* dynamic. The piano accompaniment (bottom two staves) consists of chords in the right hand and a bass line in the left hand. A *mf* dynamic is also indicated for the piano part.

49

Vib.

Pno

This system contains measures 49 through 54. The vibraphone part continues with a melodic line, featuring a long note in measure 52. The piano accompaniment provides harmonic support with chords and a steady bass line.

55

Vib.

Pno

This system contains measures 55 through 60. The vibraphone part has a melodic line with some grace notes. The piano accompaniment features a more active bass line with eighth notes.

61 *f*

Vib.

Pno

f

This system contains measures 61 through 66. The vibraphone part features a melodic line with a *f* dynamic. The piano accompaniment also features a *f* dynamic and includes a *rit.* (ritardando) marking in measure 65.

The Coventry Carol

4
67

Vib.

Pno

73

Vib.

Pno

pp

79

Vib.

Pno

85

Vib.

Pno

rit.