



Bernard Dewagtere

France, SIN LE NOBLE

The Coventry Carol (Lullay, Thou little tiny Child) Traditional

About the artist

Doctor in musicology, conductor and composer.

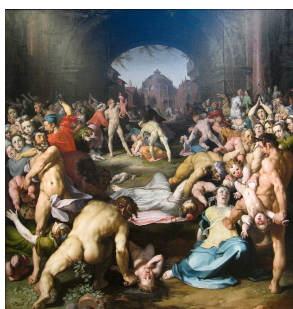
Compositions and arrangements from all eras, in all styles or musical genres and for any instrument or vocal training.

Qualification: PhD Musicology

Associate: SACEM - IPI code of the artist : 342990

Artist page : <https://www.free-scores.com/Download-PDF-Sheet-Music-bernard-dewagtere.htm>

About the piece



Title: The Coventry Carol [Lullay, Thou little tiny Child]

Composer: Traditional

Arranger: Dewagtere, Bernard

Copyright: Copyright © Bernard Dewagtere

Publisher: Dewagtere, Bernard

Instrumentation: Choir SATB, piano or organ

Style: Christmas - Carols

Bernard Dewagtere on [free-scores.com](https://www.free-scores.com)

LICENSE

This sheet music requires an authorization
- for public performances
- for use by teachers

Buy this license at :

<https://www.free-scores.com//license?p=azkvPcCXBX>



- listen to the audio
- share your interpretation
- comment
- pay the licence
- contact the artist

Prohibited distribution on other website.

The Coventry Carol

Lullay, Thou little tiny Child

Old English Carol (16th Century)

Arr. : Bernard Dewagtere

Piano

pp

Measures 1-6 of the piano introduction. The music is in 3/4 time, B-flat major, and begins with a piano (*pp*) dynamic. The right hand features chords and single notes, while the left hand plays a simple bass line.

Pno

Measures 7-12 of the piano accompaniment. The right hand has a melodic line with some grace notes, and the left hand provides harmonic support with chords and moving lines.

S.

Measures 13-18 of the soprano vocal line. The lyrics are: "Lul - lay, Thou lit - tle ti - ny". The music is in 3/4 time and begins with a piano (*p*) dynamic. The vocal line is simple and clear.

Lul - lay, Thou lit - tle ti - ny

Pno

Measures 13-18 of the piano accompaniment. The right hand has a melodic line with grace notes, and the left hand provides harmonic support with chords and moving lines.

S.

Measures 19-24 of the soprano vocal line. The lyrics are: "Child, Bye - bye, lul - loo, lul - lay. Lul - lay, Thou". The music is in 3/4 time and begins with a piano (*p*) dynamic. The vocal line is simple and clear.

Child, Bye - bye, lul - loo, lul - lay. Lul - lay, Thou

Pno

Measures 19-24 of the piano accompaniment. The right hand has a melodic line with grace notes, and the left hand provides harmonic support with chords and moving lines.

The Coventry Carol

2
25

S. lay, Thou ti - ny Child, Bye - bye, lul - loo, lul - lay.

Pno

31 *mp*

S. O sis - ters, too, how may we do For to pre - serve this

A. O sis - ters, too, how may we do For to pre - serve this

Pno *mp*

37

S. day? — This poor Young - ling for whom we sing,

A. day? — This poor Young - ling for whom we — sing,

Pno

The Coventry Carol

43 *mf*

S. Bye - bye, lul - loo, lul - lay. He - rood the King in his ra -

A. Bye - bye, lul - loo, lul - lay. He - rood the King in his ra -

T. He - rood the King in his ra -

B. He - rood the King in his ra -

Pno *mf*

49

S. cing char - ged he hath this day _____ His men of

A. cing char - ged he hath this day _____ His men of

T. cing char - ged he hath this day _____ His men of

B. cing char - ged he hath this day _____ His men of

Pno

The Coventry Carol

4
55

S. 

A. 

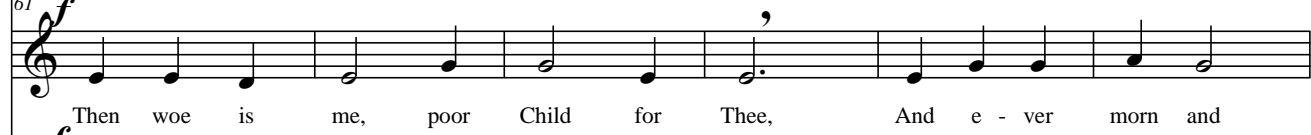
T. 

B. 

Pno 

61 *f*

S. 

A. 

T. 

B. 

Pno 

The Coventry Carol

67

S. day, _____ For Thy par - ting nor say nor sing,

A. day, _____ For Thy par - ting nor say nor _____ sing,

T. day, _____ For Thy par - ting nor say _____ nor sing,

B. day, _____ For Thy par - ting nor say _____ nor sing,

Pno

73

S. Bye - bye, lul - loo, lul - lay.

A. Bye - bye, lul - loo, lul - lay.

T. Bye - bye, lul - loo, lul - lay.

B. Bye - bye, lul - loo, - lul - - lay.

Pno

The image displays two systems of piano accompaniment for the Coventry Carol. The first system, starting at measure 79, features a treble clef with a key signature of two flats and a common time signature. The right hand plays a series of chords and single notes, while the left hand provides a steady bass line. The second system, starting at measure 85, includes a 'rit.' (ritardando) marking above the staff. The right hand continues with melodic lines and chords, and the left hand maintains the bass accompaniment. The score concludes with a double bar line and repeat dots.

The "Coventry Carol" is an English Christmas carol dating from the 16th century. The carol was traditionally performed in Coventry in England as part of a mystery play called The Pageant of the Shearmen and Tailors.

The play depicts the Christmas story from chapter two in the Gospel of Matthew: the carol itself refers to the Massacre of the Innocents, in which Herod ordered all male infants under the age of two in Bethlehem to be killed, and takes the form of a lullaby sung by mothers of the doomed children. (Wikipedia)