



Bernard Dewagtere

France, SIN LE NOBLE

Michael Row the Boat Ashore Traditional

About the artist

Doctor in musicology, conductor and composer.

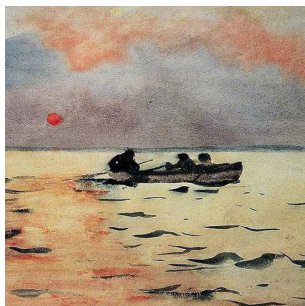
Compositions and arrangements from all eras, in all styles or musical genres and for any instrument or vocal training.

Qualification: PhD Musicology

Associate: SACEM - IPI code of the artist : 342990

Artist page : <https://www.free-scores.com/Download-PDF-Sheet-Music-bernard-dewagtere.htm>

About the piece



Title: Michael Row the Boat Ashore
Composer: Traditional
Arranger: Dewagtere, Bernard
Copyright: Copyright © Bernard Dewagtere
Publisher: Dewagtere, Bernard
Instrumentation: Voice Soprano and piano
Style: Gospel

Bernard Dewagtere on [free-scores.com](https://www.free-scores.com)

LICENSE

This sheet music requires an authorization
- for public performances
- for use by teachers

Buy this license at :

<https://www.free-scores.com//license?p=aFAhkyJYyF>



- listen to the audio
- share your interpretation
- comment
- pay the licence
- contact the artist

Prohibited distribution on other website.

Michael row the boat ashore, hallelujah.

Afro-American spiritual (1867)

Arr. : Bernard Dewagtere

$\text{♩} = 72$

Soprano

Mi - chael

Piano

Detailed description: This system shows the first four measures of the piece. The Soprano part begins with a whole rest in measures 1-3, followed by a half note G4 in measure 4. The Piano accompaniment features a steady bass line in the left hand and a more active treble line with chords and eighth notes in the right hand. The key signature has two flats (B-flat and E-flat), and the time signature is 4/4.

S

row the boat ash - ore, Hal - le - lu jah! Mi - chael -

Pno

Detailed description: This system covers measures 5 through 8. The Soprano part has a melodic line with lyrics: "row the boat ash - ore, Hal - le - lu jah! Mi - chael -". The Piano accompaniment continues with a similar rhythmic pattern, providing harmonic support for the vocal line.

S

boat a gos - pel boat, Hal - le - lu jah! Mi - chael

Pno

Detailed description: This system covers measures 9 through 12. The Soprano part continues with lyrics: "boat a gos - pel boat, Hal - le - lu jah! Mi - chael". The Piano accompaniment maintains the established harmonic and rhythmic structure.

S

boat the boat ash - ore, Hal - le - lu jah! Then you

Pno

Detailed description: This system covers measures 13 through 16. The Soprano part has lyrics: "boat the boat ash - ore, Hal - le - lu jah! Then you". The Piano accompaniment concludes the system with the same accompaniment style.

Michael row the boat ashore, hallelujah.

2
17

S

17

hear the trum - pet blow, _____ Hal - le - lu _____ jah! _____ Then you

Pno

21

S

21

hear the trum - pet sound, _____ Hal - le - lu _____ jah! _____ Trum pet

Pno

25

S

25

sound the word a - round, _____ Hal - le - lu _____ jah! _____ Trum - pet

Pno

29

S

29

sound the ju - bi - lee, _____ Hal - le - lu _____ jah! _____ Trum - pet

Pno

Michael row the boat ashore, hallelujah.

33

S

33 sound for you and me, _____ Hal - le - lu _____ jah! _____ Mi - chael

Pno

37

S

37 row the boat ash - ore, _____ Hal - le - lu _____ jah! _____ Mi - chael boat a gos - pel boat, _____

Pno

42

S

42 _____ Hal - le - lu _____ jah! _____ Mi - chael boat the boat ash - ore, _____ Hal - le -

Pno

47

rit.

S

47 lu _____ jah! _____ Then you hear the trum - pet blow, _____ Hal - le - lu _____ jah! _____

Pno