



# Richard Kearns

Ireland, Ballybofey

## Good King Wenceslas Traditional

### About the artist

Due to loss of use of hands I will be unable to transpose, arrange or otherwise modify my music in here. Further compositions will be very very slow in appearing here.....Thanks for all the support.

Teachers and students may use my music and arrangements to study and practice without further adieu.....All public performances must seek permission first.

THANKS FOR THE DONATIONS.

They keep me going.

**Artist page :** <https://www.free-scores.com/Download-PDF-Sheet-Music-guiriel.htm>

### About the piece



**Title:** Good King Wenceslas  
**Composer:** Traditional  
**Arranger:** Kearns, Richard  
**Copyright:** Richard Kearns © All rights reserved  
**Publisher:** Kearns, Richard  
**Instrumentation:** Woodwind quintet : Flute, Clarinet, Oboe, Horn, Bassoon  
**Style:** Christmas - Carols

### Richard Kearns on [free-scores.com](https://www.free-scores.com)



This work is not Public Domain. You must contact the artist for any use outside the private area.



- listen to the audio
- share your interpretation
- comment
- contact the artist

# Good King Wenceslas

Traditional.

Arranged Richard Kearns  
Copyright © 2009 Richard Kearns

1

1: Flute

2: Oboe

3: B-flat Clarinet

4: French Horn

5: Bassoon

Detailed description: This system contains measures 1 through 4 of the piece. The music is in 4/4 time and D major. The flute (1) plays the melody, starting with a quarter rest in measure 1. The oboe (2) and B-flat clarinet (3) have whole rests throughout. The French horn (4) and bassoon (5) play a rhythmic accompaniment of eighth notes.

5

1: Flute

2: Oboe

3: B-flat Clarinet

4: French Horn

5: Bassoon

Detailed description: This system contains measures 5 through 8. The flute (1) continues the melody. The oboe (2) and B-flat clarinet (3) remain silent. The French horn (4) and bassoon (5) continue their accompaniment. The bassoon part has a sharp sign above the second measure.

9

1: Flute

2: Oboe

3: B-flat Clarinet

4: French Horn

5: Bassoon

13

1: Flute

2: Oboe

3: B-flat Clarinet

4: French Horn

5: Bassoon

17

1: Flute

Musical staff for Flute 1, measures 17-20. The staff contains a sequence of eighth and quarter notes, including a sharp sign on the eighth note in measure 19.

2: Oboe

Musical staff for Oboe 2, measures 17-20. The staff contains eighth and quarter notes in measures 17 and 18, followed by rests in measures 19 and 20.

3: B-flat Clarinet

Musical staff for B-flat Clarinet 3, measures 17-20. The staff contains a sequence of quarter and eighth notes, including a sharp sign on the eighth note in measure 18.

4: French Horn

Musical staff for French Horn 4, measures 17-20. The staff contains quarter notes in measures 17 and 18, followed by rests in measures 19 and 20.

5: Bassoon

Musical staff for Bassoon 5, measures 17-20. The staff contains rests in measures 17 and 18, followed by quarter notes in measures 19 and 20.

21

1: Flute

Musical staff for Flute 1, measures 21-24. The staff contains a long melodic line with a slur over measures 21-22 and a thick black bar under measures 23-24.

2: Oboe

Musical staff for Oboe 2, measures 21-24. The staff contains rests in all four measures.

3: B-flat Clarinet

Musical staff for B-flat Clarinet 3, measures 21-24. The staff contains rests in all four measures.

4: French Horn

Musical staff for French Horn 4, measures 21-24. The staff contains quarter notes in measures 21 and 22, followed by rests in measures 23 and 24.

5: Bassoon

Musical staff for Bassoon 5, measures 21-24. The staff contains quarter notes in measures 21 and 22, followed by a thick black bar under measures 23-24.

5:  
Bassoon

22

1: Flute

2: Oboe

3: B-flat Clarinet

4: French Horn

5: Bassoon

26

1: Flute

2: Oboe

3: B-flat Clarinet

4: French Horn

5: Bassoon

27

1: Flute

Musical staff for Flute 1, measure 27. The staff is in treble clef with a key signature of one sharp (F#). The melody begins with a half note G4, followed by a quarter note A4, a quarter note B4, and a quarter note C5. A fermata is placed over the G4. The staff then continues with a quarter rest, a quarter note D5, and a quarter note E5.

2: Oboe

Musical staff for Oboe 2, measure 27. The staff is in treble clef with a key signature of one sharp (F#). It contains a whole rest.

3: B-flat Clarinet

Musical staff for B-flat Clarinet 3, measure 27. The staff is in treble clef with a key signature of two sharps (F# and C#). It contains a whole rest.

4: French Horn

Musical staff for French Horn 4, measure 27. The staff is in treble clef with a key signature of one sharp (F#). The melody begins with a quarter note G4, followed by a quarter rest, a quarter note A4, a quarter note B4, and a quarter note C5. A fermata is placed over the G4. The staff then continues with a quarter note D5, a quarter note E5, a quarter note F#5, and a quarter note G5.

5: Bassoon

Musical staff for Bassoon 5, measure 27. The staff is in bass clef with a key signature of one sharp (F#). It contains a whole rest.

28

1: Flute

Musical staff for Flute 1, measure 28. The staff is in treble clef with a key signature of one sharp (F#). The melody begins with a half note G4, followed by a quarter note A4, a quarter note B4, and a quarter note C5. A fermata is placed over the G4. The staff then continues with a quarter note D5, a quarter note E5, a quarter note F#5, and a quarter note G5.

2: Oboe

Musical staff for Oboe 2, measure 28. The staff is in treble clef with a key signature of one sharp (F#). It contains a whole rest.

3: B-flat Clarinet

Musical staff for B-flat Clarinet 3, measure 28. The staff is in treble clef with a key signature of two sharps (F# and C#). The melody begins with a quarter note G4, followed by a quarter note A4, a quarter note B4, and a quarter note C5. A fermata is placed over the G4. The staff then continues with a quarter note D5, a quarter note E5, a quarter note F#5, and a quarter note G5.

4: French Horn

Musical staff for French Horn 4, measure 28. The staff is in treble clef with a key signature of one sharp (F#). The melody begins with a quarter note G4, followed by a quarter note A4, a quarter note B4, and a quarter note C5. A fermata is placed over the G4. The staff then continues with a quarter note D5, a quarter note E5, a quarter note F#5, and a quarter note G5.

5: Bassoon

Musical staff for Bassoon 5, measure 28. The staff is in bass clef with a key signature of one sharp (F#). The melody begins with a quarter note G3, followed by a quarter note A3, a quarter note B3, and a quarter note C4. A fermata is placed over the G3. The staff then continues with a quarter note D4, a quarter note E4, a quarter note F#4, and a quarter note G4.

5:  
Bassoon

32

1: Flute

2: Oboe

3: B-flat Clarinet

4: French Horn

5: Bassoon

35

1: Flute

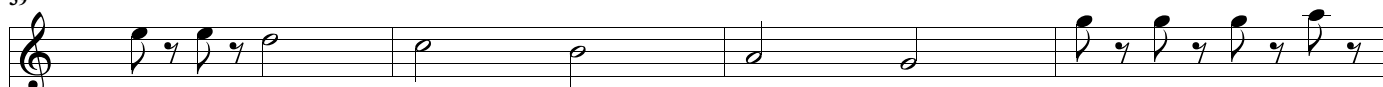
2: Oboe

3: B-flat Clarinet

4: French Horn

5: Bassoon

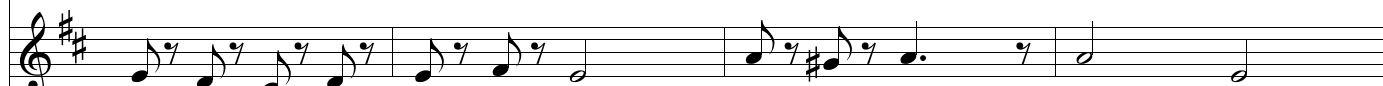
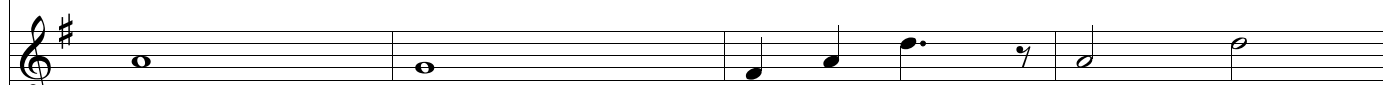
39



1: Flute



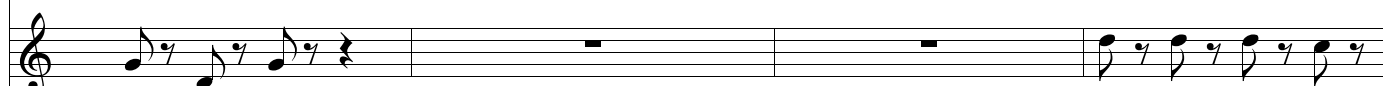
2: Oboe

3: B-flat  
Clarinet4: French  
Horn5:  
Bassoon

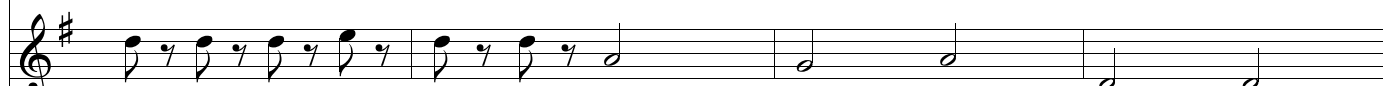
43



1: Flute



2: Oboe

3: B-flat  
Clarinet4: French  
Horn5:  
Bassoon



47

1: Flute

1: Flute

2: Oboe

2: Oboe

3: B-flat Clarinet

3: B-flat Clarinet

4: French Horn

4: French Horn

5: Bassoon

5: Bassoon

50

1: Flute

1: Flute

2: Oboe

2: Oboe

3: B-flat Clarinet

3: B-flat Clarinet

4: French Horn

4: French Horn

5: Bassoon

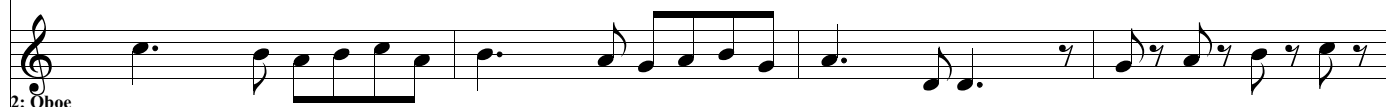
5: Bassoon

51



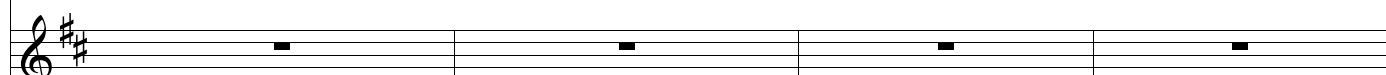
1: Flute

Musical staff for Flute 1, measures 51-54. The staff contains a melodic line with eighth and sixteenth notes, including accidentals (sharps and naturals).




2: Oboe

Musical staff for Oboe 2, measures 51-54. The staff contains a melodic line with eighth and sixteenth notes, including accidentals (sharps and naturals).



3: B-flat Clarinet

Musical staff for B-flat Clarinet 3, measures 51-54. The staff contains whole rests for all four measures.



4: French Horn

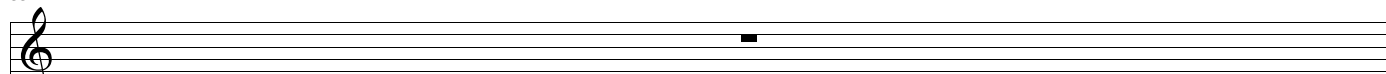
Musical staff for French Horn 4, measures 51-54. The staff contains a simple harmonic accompaniment with quarter notes and rests.



5: Bassoon

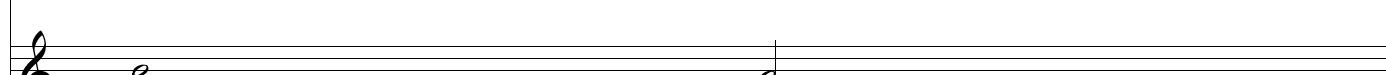
Musical staff for Bassoon 5, measures 51-54. The staff contains a melodic line with eighth and sixteenth notes, including accidentals (sharps and naturals).

55



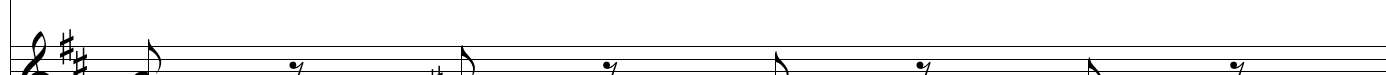
1: Flute

Musical staff for Flute 1, measures 55-58. The staff contains whole rests for all four measures.



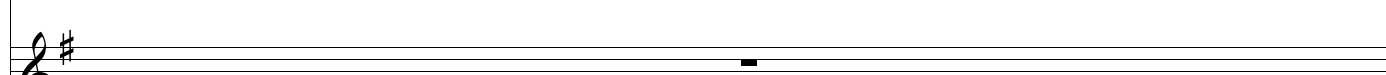
2: Oboe

Musical staff for Oboe 2, measures 55-58. The staff contains a simple harmonic accompaniment with quarter notes and rests.



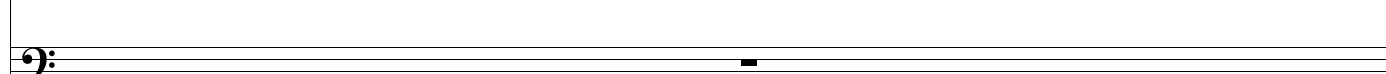
3: B-flat Clarinet

Musical staff for B-flat Clarinet 3, measures 55-58. The staff contains a melodic line with quarter notes and rests, including accidentals (sharps and naturals).



4: French Horn

Musical staff for French Horn 4, measures 55-58. The staff contains whole rests for all four measures.



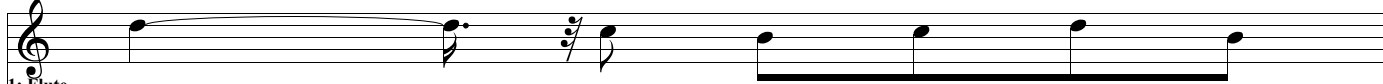
5: Bassoon

Musical staff for Bassoon 5, measures 55-58. The staff contains whole rests for all four measures.

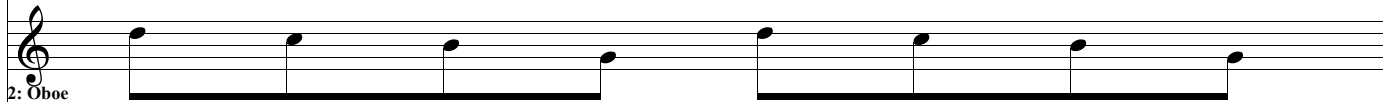
5:  
Bassoon

56

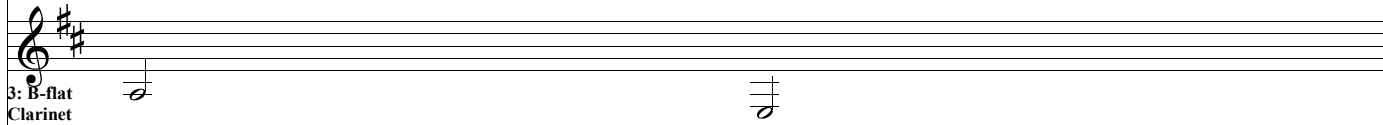
1: Flute



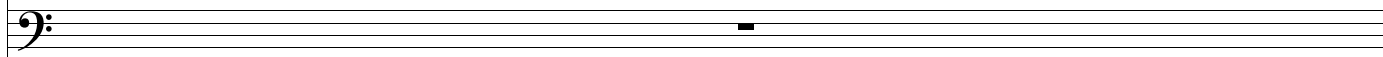
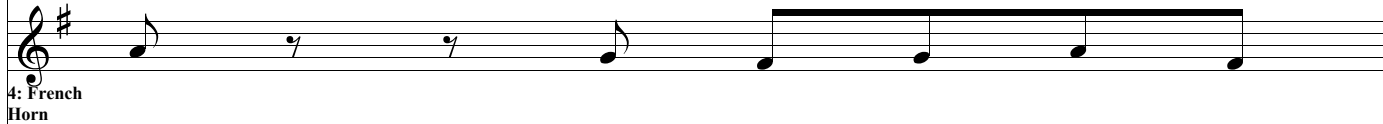
2: Oboe



3: B-flat Clarinet



4: French Horn



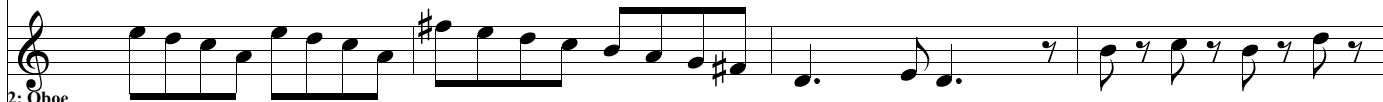
5:  
Bassoon

57

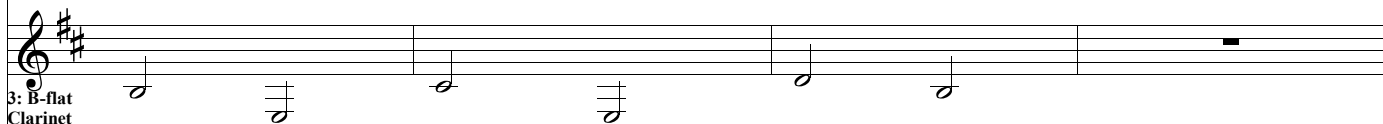
1: Flute



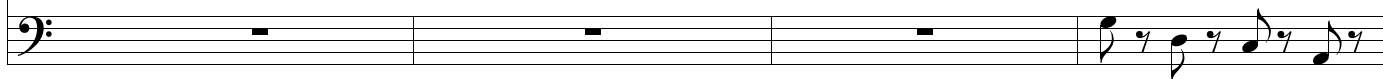
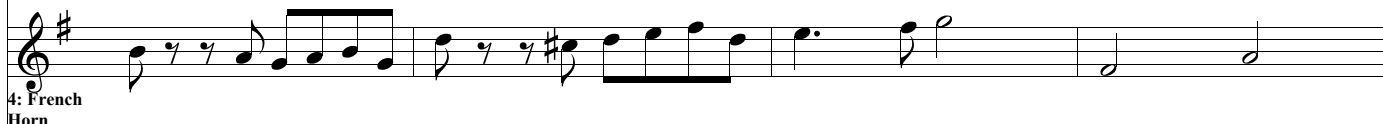
2: Oboe



3: B-flat Clarinet

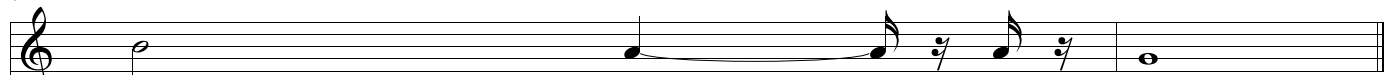


4: French Horn



5:  
Bassoon

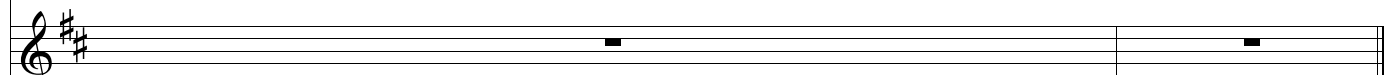
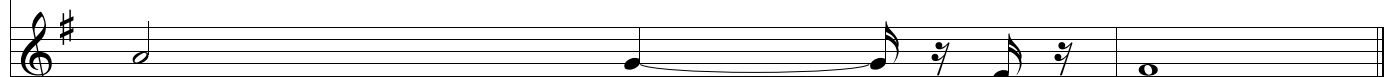
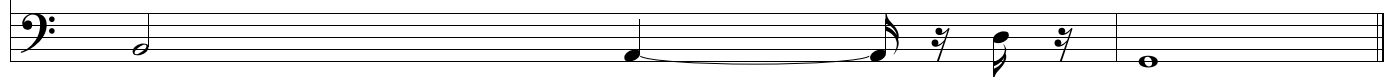
61



1: Flute



2: Oboe

3: B-flat  
Clarinet4: French  
Horn5:  
Bassoon