



WIEN, mein SINN!

WALZER

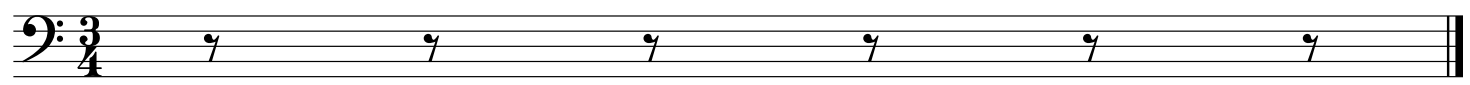
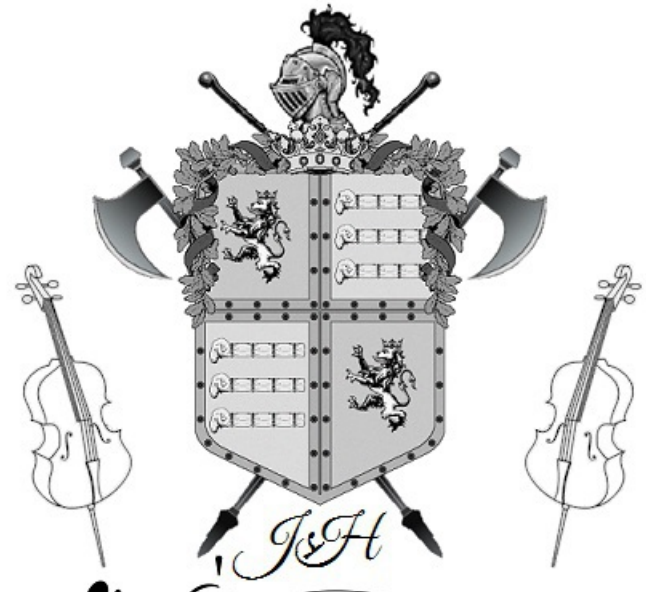
für das

SOLO CELLO

JOHANN STRAUSS.



192. Werk



mein Sinn

Introduction

Walzer

Strauss

First staff of music, measures 1-4. Bass clef, key signature of one sharp (F#), 3/4 time signature. The melody consists of eighth and quarter notes with various articulations like accents and slurs.

Andantino

Second staff of music, measures 5-8. Bass clef, key signature of one sharp (F#). The tempo is marked Andantino. The melody continues with quarter and eighth notes, including slurs and accents.

Third staff of music, measures 9-11. Bass clef, key signature of one sharp (F#). The melody features a mix of quarter and eighth notes with slurs and accents.

Fourth staff of music, measures 12-14. Bass clef, key signature of one sharp (F#). The melody includes quarter notes and rests, with some notes beamed together.

Fifth staff of music, measures 15-18. Bass clef, key signature of one sharp (F#). The melody features eighth notes with slurs and accents, and some notes with a wavy line above them.

Sixth staff of music, measures 19-22. Bass clef, key signature of one sharp (F#). The melody concludes with eighth notes, slurs, and accents, ending with a double bar line.

mein Sinn

Walzer

Walzer 1

Strauss

1

5

9

13

Fine

17

22

27

31

36

D.S.

mein Sinn

Walzer 2

Strauss

First musical staff (measures 1-5). Bass clef, key signature of one sharp (F#), 3/4 time signature. The staff begins with a repeat sign. It contains various rhythmic patterns including eighth and sixteenth notes, with some notes marked with accents (>) and wavy hairpins (∞).

Second musical staff (measures 6-10). Continuation of the piece with similar rhythmic motifs and phrasing. Measure 6 is marked with a '6' at the beginning.

Third musical staff (measures 11-15). Continuation of the piece with similar rhythmic motifs and phrasing. Measure 11 is marked with an '11' at the beginning.

Fourth musical staff (measures 16-20). Continuation of the piece with similar rhythmic motifs and phrasing. Measure 16 is marked with a '16' at the beginning.

Fifth musical staff (measures 21-25). Continuation of the piece with similar rhythmic motifs and phrasing. Measure 21 is marked with a '21' at the beginning.

Sixth musical staff (measures 26-30). Continuation of the piece with similar rhythmic motifs and phrasing. Measure 26 is marked with a '26' at the beginning.

Seventh musical staff (measures 31-35). Continuation of the piece with similar rhythmic motifs and phrasing. Measure 31 is marked with a '31' at the beginning.

Eighth musical staff (measures 36-40). Continuation of the piece with similar rhythmic motifs and phrasing. Measure 36 is marked with a '36' at the beginning.

mein Sinn

Walzer 3

Strauss

First measure of the piece, bass clef, 3/4 time signature. It begins with a repeat sign and a first ending bracket.

Measures 6-8. Measure 7 contains a trill and a fermata over the final note.

Measures 11-13. Measure 12 contains a trill and a fermata over the final note.

Measures 16-18. Measure 17 contains a trill and a fermata over the final note. The staff ends with a double bar line and a repeat sign.

Fine

Measures 21-25. The key signature changes to D major. Measure 25 features a fermata over the final note.

Measures 26-30. Measures 29 and 30 have accents (>) over the notes. Measure 30 features a fermata over the final note.

Measures 31-35. The key signature changes to D minor. Measure 35 features a fermata over the final note.

Measures 36-40. The key signature changes to D major. The staff ends with a double bar line and a repeat sign.

D.S.

mein Sinn

Walzer 4

Strauss

First musical staff, measures 1-5. Bass clef, key signature of one sharp (F#), 3/4 time signature. The melody begins with a quarter rest, followed by a dotted quarter note G2, an eighth note G2, and a quarter note G2. The next measure contains a quarter note G2, an eighth note A2, and a quarter note A2. The third measure has a quarter note G2, an eighth note G2, and a quarter note G2. The fourth measure features a quarter note G2, an eighth note A2, and a quarter note A2. The fifth measure consists of a quarter note G2, an eighth note G2, and a quarter note G2.

Second musical staff, measures 6-10. Measure 6: quarter note G2, eighth note A2, quarter note A2. Measure 7: quarter note G2, eighth note G2, quarter note G2. Measure 8: quarter note G2, eighth note A2, quarter note A2. Measure 9: quarter note G2, eighth note G2, quarter note G2. Measure 10: quarter note G2, eighth note A2, quarter note A2.

Third musical staff, measures 11-15. Measure 11: quarter note G2, eighth note A2, quarter note A2. Measure 12: quarter note G2, eighth note G2, quarter note G2. Measure 13: quarter note G2, eighth note A2, quarter note A2. Measure 14: quarter note G2, eighth note G2, quarter note G2. Measure 15: quarter note G2, eighth note A2, quarter note A2.

Fourth musical staff, measures 16-20. Measure 16: quarter note G2, eighth note A2, quarter note A2. Measure 17: quarter note G2, eighth note G2, quarter note G2. Measure 18: quarter note G2, eighth note A2, quarter note A2. Measure 19: quarter note G2, eighth note G2, quarter note G2. Measure 20: quarter note G2, eighth note A2, quarter note A2.

Fifth musical staff, measures 21-24. Measure 21: quarter note G2, eighth note A2, quarter note A2. Measure 22: quarter note G2, eighth note G2, quarter note G2. Measure 23: quarter note G2, eighth note A2, quarter note A2. Measure 24: quarter note G2, eighth note G2, quarter note G2.

Sixth musical staff, measures 25-29. Measure 25: quarter note G2, eighth note A2, quarter note A2. Measure 26: quarter note G2, eighth note G2, quarter note G2. Measure 27: quarter note G2, eighth note A2, quarter note A2. Measure 28: quarter note G2, eighth note G2, quarter note G2. Measure 29: quarter note G2, eighth note A2, quarter note A2.

Seventh musical staff, measures 30-33. Measure 30: quarter note G2, eighth note A2, quarter note A2. Measure 31: quarter note G2, eighth note G2, quarter note G2. Measure 32: quarter note G2, eighth note A2, quarter note A2. Measure 33: quarter note G2, eighth note G2, quarter note G2.

Eighth musical staff, measures 34-37. Measure 34: quarter note G2, eighth note A2, quarter note A2. Measure 35: quarter note G2, eighth note G2, quarter note G2. Measure 36: quarter note G2, eighth note A2, quarter note A2. Measure 37: quarter note G2, eighth note G2, quarter note G2.

Ninth musical staff, measures 38-41. Measure 38: quarter note G2, eighth note A2, quarter note A2. Measure 39: quarter note G2, eighth note G2, quarter note G2. Measure 40: quarter note G2, eighth note A2, quarter note A2. Measure 41: quarter note G2, eighth note G2, quarter note G2.

mein Sinn

Walzer 5

Strauss

1

6

10

14

19

24

29

34

mein Sinn

Coda

Strauss

First staff of music, measures 1-5. Bass clef, key signature of one sharp (F#), 3/4 time signature. Notes: G2, A2, B2, C3, D3, E3, F#3, G3, A3, B3, C4, D4, E4, F#4, G4, A4, B4, C5. Dynamics: > above measure 4, > above measure 5.

Second staff of music, measures 6-10. Bass clef, key signature of one sharp (F#), 3/4 time signature. Notes: G2, A2, B2, C3, D3, E3, F#3, G3, A3, B3, C4, D4, E4, F#4, G4, A4, B4, C5. Dynamics: > above measure 7, > above measure 9.

Third staff of music, measures 11-15. Bass clef, key signature of one sharp (F#), 3/4 time signature. Notes: G2, A2, B2, C3, D3, E3, F#3, G3, A3, B3, C4, D4, E4, F#4, G4, A4, B4, C5. Dynamics: > above measure 12, > above measure 14.

Fourth staff of music, measures 16-20. Bass clef, key signature of one sharp (F#), 3/4 time signature. Notes: G2, A2, B2, C3, D3, E3, F#3, G3, A3, B3, C4, D4, E4, F#4, G4, A4, B4, C5. Dynamics: > above measure 17, > above measure 19.

Fifth staff of music, measures 21-25. Bass clef, key signature of one sharp (F#), 3/4 time signature. Notes: G2, A2, B2, C3, D3, E3, F#3, G3, A3, B3, C4, D4, E4, F#4, G4, A4, B4, C5. Dynamics: > above measure 22, > above measure 24.

Sixth staff of music, measures 26-30. Bass clef, key signature of one sharp (F#), 3/4 time signature. Notes: G2, A2, B2, C3, D3, E3, F#3, G3, A3, B3, C4, D4, E4, F#4, G4, A4, B4, C5. Dynamics: > above measure 27, > above measure 29.

Seventh staff of music, measures 31-35. Bass clef, key signature of one sharp (F#), 3/4 time signature. Notes: G2, A2, B2, C3, D3, E3, F#3, G3, A3, B3, C4, D4, E4, F#4, G4, A4, B4, C5. Dynamics: > above measure 32, > above measure 34.

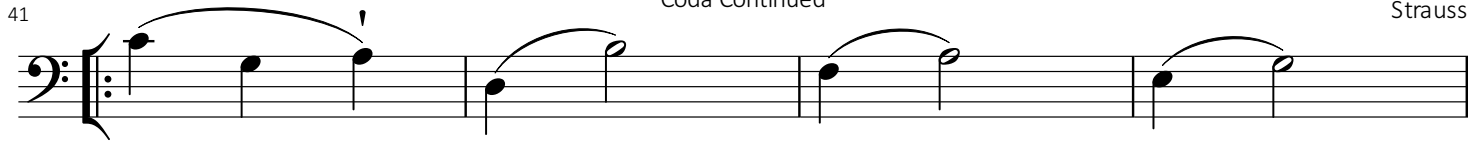
Eighth staff of music, measures 36-40. Bass clef, key signature of one sharp (F#), 3/4 time signature. Notes: G2, A2, B2, C3, D3, E3, F#3, G3, A3, B3, C4, D4, E4, F#4, G4, A4, B4, C5. Dynamics: > above measure 37, > above measure 39.

mein Sinn

Coda Continued

Strauss

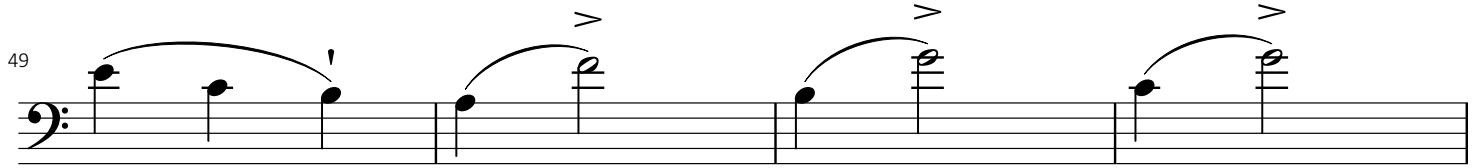
41



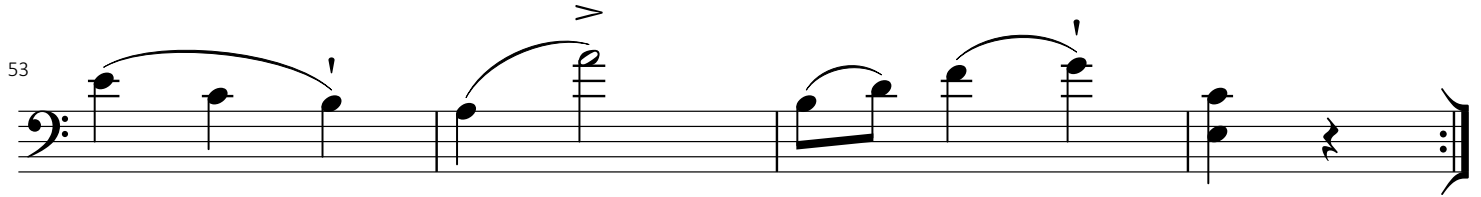
45



49



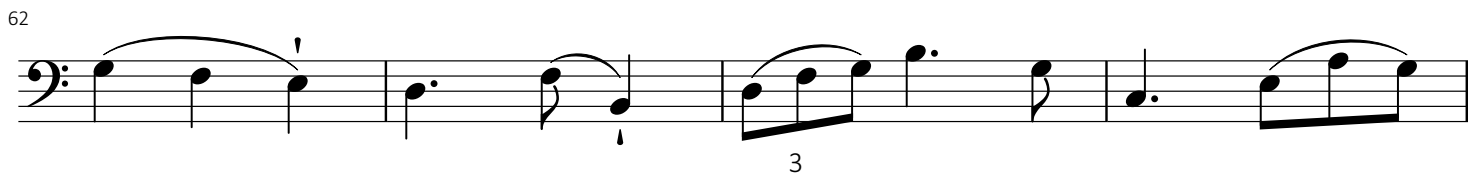
53



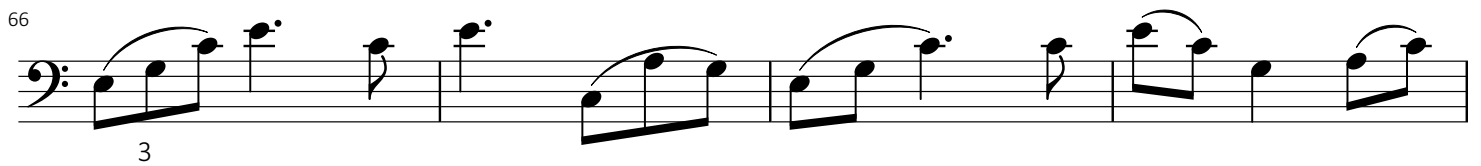
57



62



66



70

