



DIE PUBLICISTEN

Op. 321

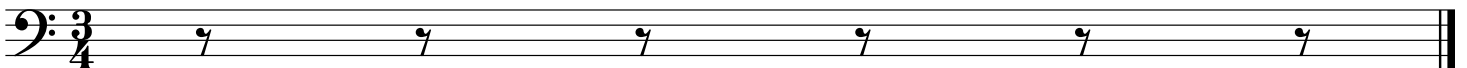
WALZER
für das
Solo Cello

von

JOHANN STRAUSS II



J & H



Allegro animato

Die Publicisten

Introduction

Strauss

6

11

17

20

23

28

33

37

40

44

Die Publicisten

Walzer

Walzer 1

Strauss

First musical staff, measures 1-5. Bass clef, key signature of two sharps (F# and C#), 3/4 time signature. The melody begins with a quarter note G2, followed by quarter notes A2, B2, and C3, then a half note D3. The next measure contains a quarter note E3, a quarter note F#3, and a quarter note G3. The third measure has a quarter note A3, a quarter note B3, and a quarter note C4. The fourth measure features a quarter note D4, a quarter note E4, and a quarter note F#4. The fifth measure consists of a quarter note G4, a quarter note A4, and a quarter note B4.

Second musical staff, measures 6-10. Measures 6-7 continue the previous melody. Measure 8 has a quarter note C5, a quarter note B4, and a quarter note A4. Measure 9 has a quarter note G4, a quarter note F#4, and a quarter note E4. Measure 10 has a quarter note D4, a quarter note C4, and a quarter note B3.

Third musical staff, measures 11-15. Measures 11-12 continue the previous melody. Measure 13 has a quarter note A3, a quarter note G3, and a quarter note F#3. Measure 14 has a quarter note E3, a quarter note D3, and a quarter note C3. Measure 15 has a quarter note B2, a quarter note A2, and a quarter note G2.

Fourth musical staff, measures 16-20. Measures 16-17 continue the previous melody. Measure 18 has a quarter note F#2, a quarter note E2, and a quarter note D2. Measure 19 has a quarter note C2, a quarter note B1, and a quarter note A1. Measure 20 has a quarter note G1, a quarter note F#1, and a quarter note E1.

Fifth musical staff, measures 21-24. Measures 21-22 continue the previous melody. Measure 23 has a quarter note D2, a quarter note C2, and a quarter note B1. Measure 24 has a quarter note A1, a quarter note G1, and a quarter note F#1.

Sixth musical staff, measures 25-28. Measures 25-26 continue the previous melody. Measure 27 has a quarter note E1, a quarter note D1, and a quarter note C1. Measure 28 has a quarter note B0, a quarter note A0, and a quarter note G0.

Seventh musical staff, measures 29-32. Measures 29-30 continue the previous melody. Measure 31 has a quarter note F#0, a quarter note E0, and a quarter note D0. Measure 32 has a quarter note C0, a quarter note B0, and a quarter note A0.

Eighth musical staff, measures 33-37. Measures 33-34 continue the previous melody. Measure 35 has a quarter note G0, a quarter note F#0, and a quarter note E0. Measure 36 has a quarter note D0, a quarter note C0, and a quarter note B0. Measure 37 has a quarter note A0, a quarter note G0, and a quarter note F#0.

Ninth musical staff, measures 38-42. Measures 38-39 continue the previous melody. Measure 40 has a quarter note E0, a quarter note D0, and a quarter note C0. Measure 41 has a quarter note B0, a quarter note A0, and a quarter note G0. Measure 42 has a quarter note F#0, a quarter note E0, and a quarter note D0.

Tenth musical staff, measures 43-47. Measures 43-44 continue the previous melody. Measure 45 has a quarter note C0, a quarter note B0, and a quarter note A0. Measure 46 has a quarter note G0, a quarter note F#0, and a quarter note E0. Measure 47 has a quarter note D0, a quarter note C0, and a quarter note B0.

Eleventh musical staff, measures 48-52. Measures 48-49 continue the previous melody. Measure 50 has a quarter note A0, a quarter note G0, and a quarter note F#0. Measure 51 has a quarter note E0, a quarter note D0, and a quarter note C0. Measure 52 has a quarter note B0, a quarter note A0, and a quarter note G0.

Twelfth musical staff, measures 53-57. Measures 53-54 continue the previous melody. Measure 55 has a quarter note F#0, a quarter note E0, and a quarter note D0. Measure 56 has a quarter note C0, a quarter note B0, and a quarter note A0. Measure 57 has a quarter note G0, a quarter note F#0, and a quarter note E0.

Die Publicisten

Walzer 2

Strauss

5

10

14

19

23

28

33

37

42

46

50

Die Publicisten

Strauss

Eingang

Walzer 3

Measures 1-4 of the piece. The key signature has one flat (B-flat) and the time signature is 3/4. The notation features a bass clef, a 7-measure rest at the start, and a melodic line with eighth and quarter notes, including a sharp sign in the second measure.

5 Walzer

Measures 5-8. The melody continues with eighth and quarter notes, featuring a sharp sign in the sixth measure and a fermata over the eighth measure.

9

Measures 9-12. The melody continues with eighth and quarter notes, featuring a sharp sign in the tenth measure and a fermata over the twelfth measure.

13

Measures 13-16. The melody continues with eighth and quarter notes, featuring a sharp sign in the fourteenth measure and a fermata over the sixteenth measure.

17

Measures 17-20, first ending. The melody continues with eighth and quarter notes, featuring a sharp sign in the nineteenth measure. A first ending bracket spans measures 17-20.

21

Measures 21-24. The melody continues with eighth and quarter notes, featuring a sharp sign in the twenty-third measure and a fermata over the twenty-fourth measure.

25

Measures 25-28, second ending. The melody continues with eighth and quarter notes, featuring a sharp sign in the twenty-seventh measure. A second ending bracket spans measures 25-28.

29

Measures 29-33. The melody continues with eighth and quarter notes, featuring a sharp sign in the thirty-second measure and a fermata over the thirty-third measure.

34

Measures 34-38. The melody continues with eighth and quarter notes, featuring a sharp sign in the thirty-sixth measure and a fermata over the thirty-eighth measure.

39

Measures 39-43, first ending. The melody continues with eighth and quarter notes, featuring a sharp sign in the forty-second measure. A first ending bracket spans measures 39-43.

44

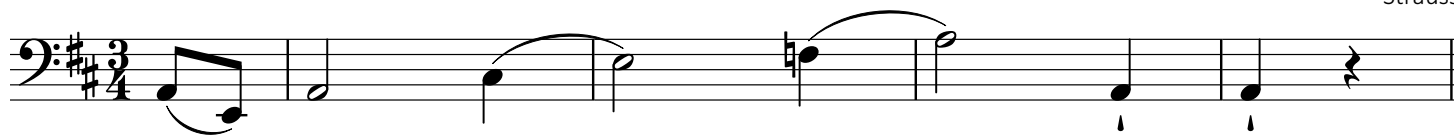
Measures 44-47, second ending. The melody continues with eighth and quarter notes, featuring a sharp sign in the forty-sixth measure. A second ending bracket spans measures 44-47.

Die Publicisten

Eingang

Walzer 4

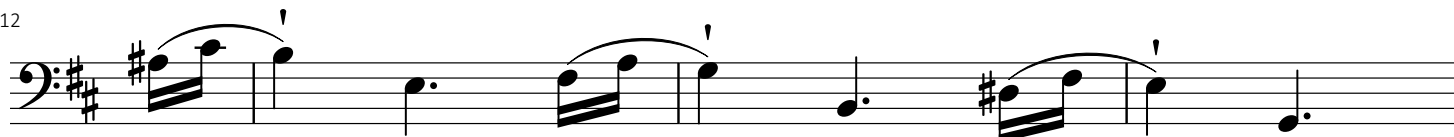
Strauss



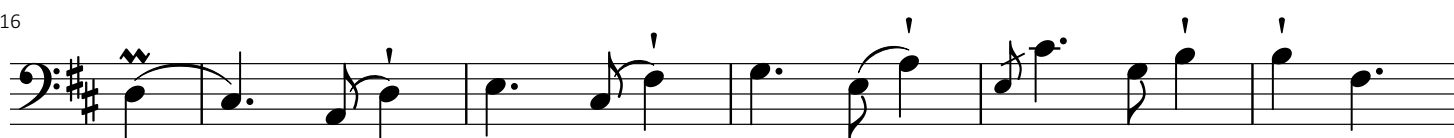
6 Walzer



12



16



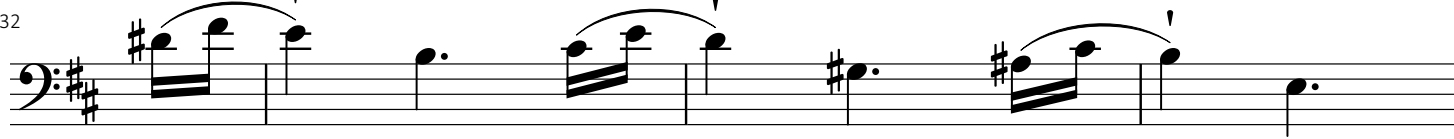
22



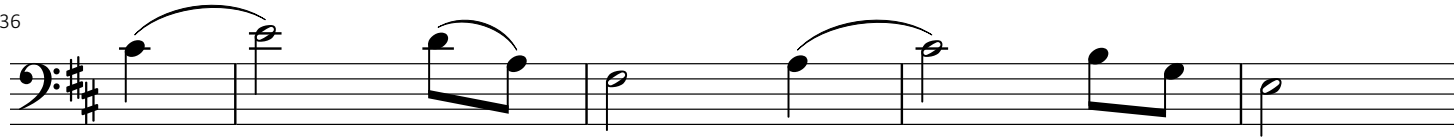
26



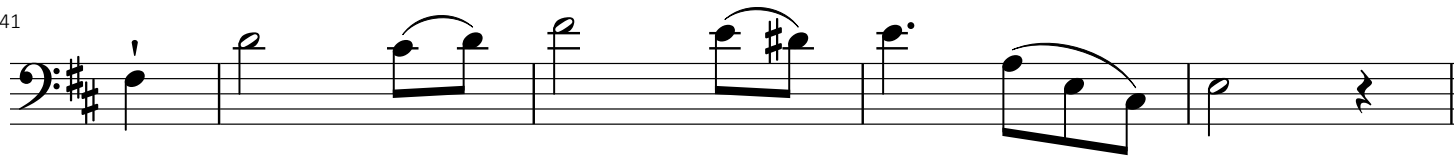
32



36



41



Die Publicisten

Walzer 4 Continued

Strauss

First musical staff, measures 1-5. Bass clef, key signature of two sharps (F# and C#). The melody consists of eighth and quarter notes with various articulations like slurs and accents.

6

Second musical staff, measures 6-10. Continuation of the melody from the first staff.

10

Third musical staff, measures 11-13. Continuation of the melody.

14

Fourth musical staff, measures 14-17. Continuation of the melody.

18

Fifth musical staff, measures 18-21. Continuation of the melody.

22

Sixth musical staff, measures 22-25. Continuation of the melody.

26

Seventh musical staff, measures 26-29. Continuation of the melody.

30

Eighth musical staff, measures 30-33. Continuation of the melody, ending with a double bar line.

Die Publicisten

Eingang

Walzer 5

Strauss

5

9

13

17

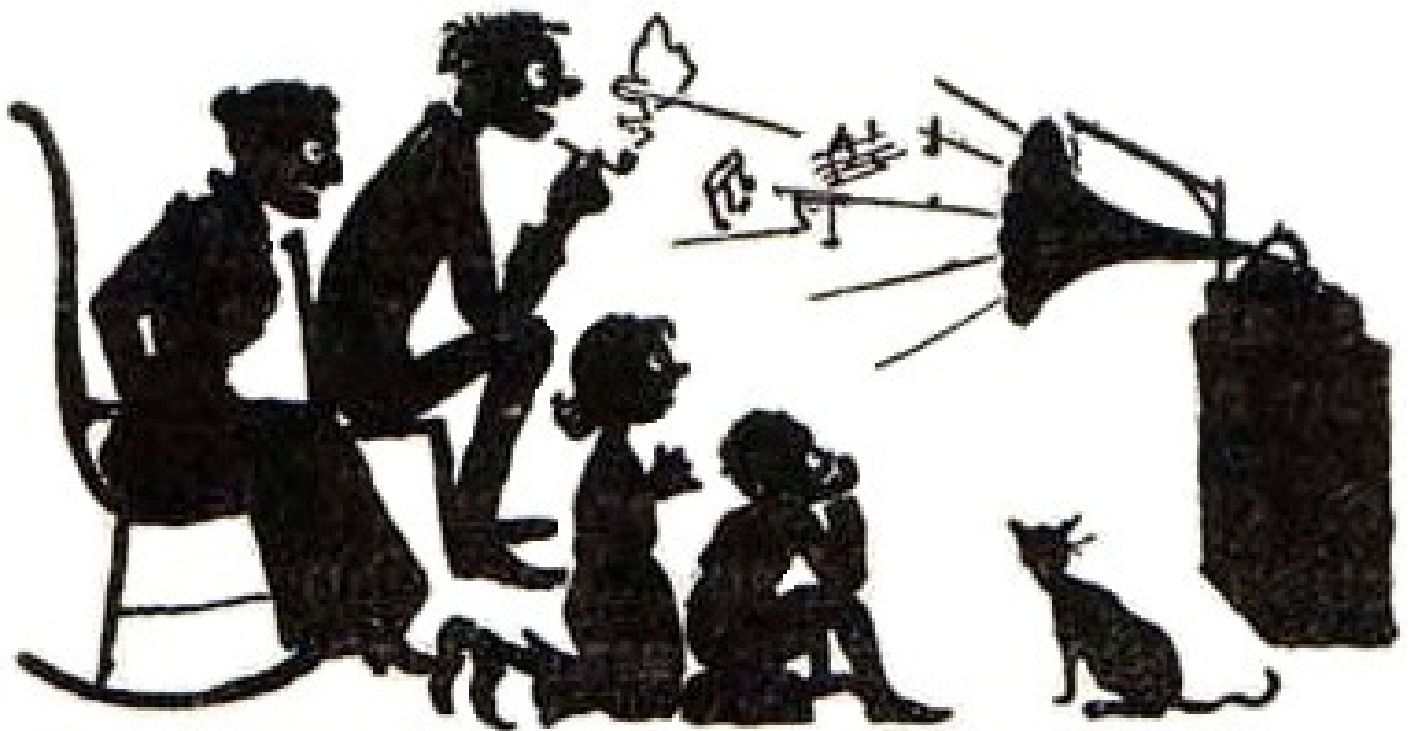
21

26

31

36

*Stay Tuned
While Our Performer
Prepares for the Finale*



We Hope You Have Enjoyed The Show.

*Now on With The Show,
This Is It!*

Die Publicisten

Eingang

Coda

Strauss

Measures 1-5 of the 'Eingang' section. The music is in bass clef, 3/4 time, and G major. It features a series of eighth notes with accents, grouped by slurs. Measure 5 ends with a double bar line and a repeat sign.

Measures 6-9 of the 'Walzer' section. The music continues in bass clef, 3/4 time, and G major. It features a series of eighth notes with accents, grouped by slurs. Measure 9 ends with a double bar line and a repeat sign.

Measures 10-13 of the 'Walzer' section. The music continues in bass clef, 3/4 time, and G major. It features a series of eighth notes with accents, grouped by slurs. Measure 13 ends with a double bar line and a repeat sign.

Measures 14-17 of the 'Walzer' section. The music continues in bass clef, 3/4 time, and G major. It features a series of eighth notes with accents, grouped by slurs. Measure 17 ends with a double bar line and a repeat sign.

Measures 18-21 of the 'Walzer' section. The music continues in bass clef, 3/4 time, and G major. It features a series of eighth notes with accents, grouped by slurs. Measure 21 ends with a double bar line and a repeat sign.

Measures 22-26 of the 'Walzer' section. The music continues in bass clef, 3/4 time, and G major. It features a series of eighth notes with accents, grouped by slurs. Measure 26 ends with a double bar line and a repeat sign.

Measures 27-30 of the 'Walzer' section. The music continues in bass clef, 3/4 time, and G major. It features a series of eighth notes with accents, grouped by slurs. Measure 30 ends with a double bar line and a repeat sign.

Measures 31-35 of the 'Walzer' section. The music continues in bass clef, 3/4 time, and G major. It features a series of eighth notes with accents, grouped by slurs. Measure 35 ends with a double bar line and a repeat sign.

Measures 36-40 of the 'Walzer' section. The music continues in bass clef, 3/4 time, and G major. It features a series of eighth notes with accents, grouped by slurs. Measure 40 ends with a double bar line and a repeat sign.

Measures 41-44 of the 'Walzer' section. The music continues in bass clef, 3/4 time, and G major. It features a series of eighth notes with accents, grouped by slurs. Measure 44 ends with a double bar line and a repeat sign.

Measures 45-48 of the 'Walzer' section. The music continues in bass clef, 3/4 time, and G major. It features a series of eighth notes with accents, grouped by slurs. Measure 48 ends with a double bar line and a repeat sign.

Measures 49-52 of the 'Walzer' section. The music continues in bass clef, 3/4 time, and G major. It features a series of eighth notes with accents, grouped by slurs. Measure 52 ends with a double bar line and a repeat sign.

Measures 53-56 of the 'Walzer' section. The music continues in bass clef, 3/4 time, and G major. It features a series of eighth notes with accents, grouped by slurs. Measure 56 ends with a double bar line and a repeat sign.

