



# Ralf Behrens

Germany, Edewecht

## Poco Allegro (Opus 4-4-2 - Version 2) Stanley, John

### About the artist

Hello, my name is Ralf Behrens, born in 1958. My instruments are the guitar, the church organ, several recorders and some more. Especially for my pupils and a few small music ensembles I arrange pieces of music for studying and/or performing. Feel free to use my arrangements, but – of course – donations are welcome. Have fun.

**Artist page :** <https://www.free-scores.com/Download-PDF-Sheet-Music-ralfbehrens.htm>

### About the piece



<b>Title:</b>	Poco Allegro [Opus 4-4-2 - Version 2]
<b>Composer:</b>	Stanley, John
<b>Arranger:</b>	Behrens, Ralf
<b>Copyright:</b>	Copyright © Ralf Behrens
<b>Publisher:</b>	Behrens, Ralf
<b>Instrumentation:</b>	Viola, Guitar
<b>Style:</b>	Classical

### Ralf Behrens on [free-scores.com](https://www.free-scores.com)



This work is not Public Domain. You must contact the artist for any use outside the private area.

**Prohibited distribution on other website.**



- listen to the audio
- share your interpretation
- comment
- contact the artist

# Opus 4-4-2 Poco Allegro

Version 2

John Stanley (1712-1786) (Arr.: Ralf Behrens)

www.ra-be-musik-und-mehr.de - ©2017 RaBe

♩ = c. 90

Viola

Guitar

Musical notation for the first system, measures 1-4. The Viola part is in bass clef, 3/4 time, with a key signature of one flat. The Guitar part is in treble clef, 3/4 time, with a key signature of one flat. The guitar part features a bass line with a 6th fret marker.

5

5

Musical notation for the second system, measures 5-8. Both parts continue with similar rhythmic patterns.

9

9

Musical notation for the third system, measures 9-12. The Viola part shows more complex rhythmic figures.

13

13

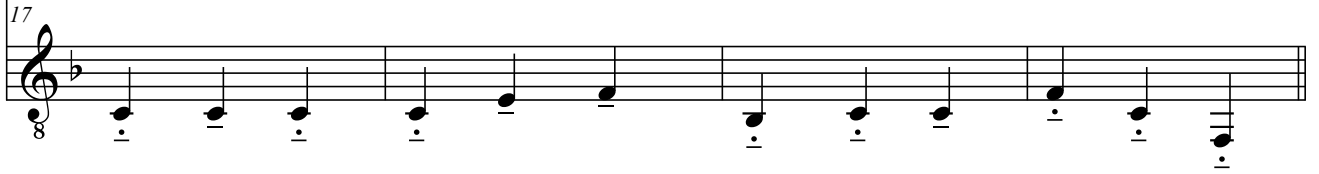
Musical notation for the fourth system, measures 13-16. The Viola part concludes with a final cadence.

17



Musical notation for the bass staff, measures 17-20. The key signature has one flat (B-flat). The melody starts on a dotted quarter note G2, followed by quarter notes A2, B2, and C3. Measure 18 has a dotted quarter note D3, quarter notes E3 and F3, and a dotted quarter note G3. Measure 19 has quarter notes A3 and B3, eighth notes C4 and D4, quarter notes E4 and F4, and a dotted quarter note G4. Measure 20 has quarter notes A4 and B4, eighth notes C5 and D5, quarter notes E5 and F5, and a dotted quarter note G5.

17



Musical notation for the treble staff, measures 17-20. The key signature has one flat (B-flat). The accompaniment consists of quarter notes: G2, A2, B2, C3, D3, E3, F3, G3, A3, B3, C4, D4, E4, F4, G4, A4, B4, C5, D5, E5, F5, G5.

21



Musical notation for the bass staff, measures 21-24. The key signature has one flat (B-flat). The melody starts on a dotted quarter note G2, followed by quarter notes A2, B2, and C3. Measure 22 has a dotted quarter note D3, quarter notes E3 and F3, and a dotted quarter note G3. Measure 23 has quarter notes A3 and B3, eighth notes C4 and D4, quarter notes E4 and F4, and a dotted quarter note G4. Measure 24 has quarter notes A4 and B4, eighth notes C5 and D5, quarter notes E5 and F5, and a dotted quarter note G5.

21



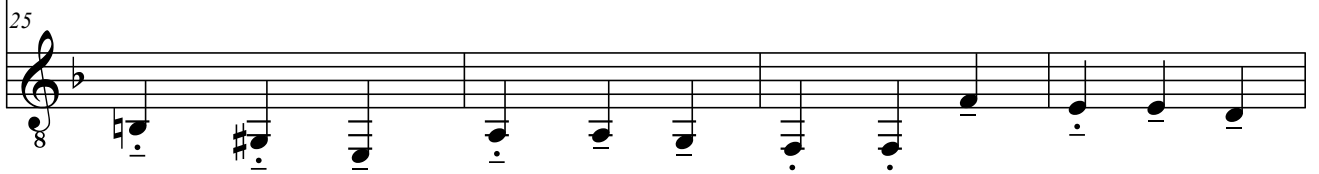
Musical notation for the treble staff, measures 21-24. The key signature has one flat (B-flat). The accompaniment consists of quarter notes: G2, A2, B2, C3, D3, E3, F3, G3, A3, B3, C4, D4, E4, F4, G4, A4, B4, C5, D5, E5, F5, G5.

25



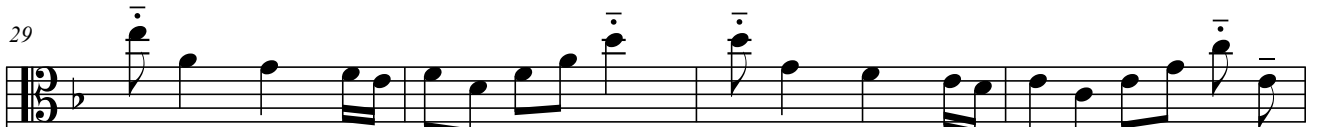
Musical notation for the bass staff, measures 25-28. The key signature has one flat (B-flat). The melody starts on a dotted quarter note G2, followed by quarter notes A2, B2, and C3. Measure 26 has a dotted quarter note D3, quarter notes E3 and F3, and a dotted quarter note G3. Measure 27 has quarter notes A3 and B3, eighth notes C4 and D4, quarter notes E4 and F4, and a dotted quarter note G4. Measure 28 has quarter notes A4 and B4, eighth notes C5 and D5, quarter notes E5 and F5, and a dotted quarter note G5.

25



Musical notation for the treble staff, measures 25-28. The key signature has one flat (B-flat). The accompaniment consists of quarter notes: G2, A2, B2, C3, D3, E3, F3, G3, A3, B3, C4, D4, E4, F4, G4, A4, B4, C5, D5, E5, F5, G5.

29



Musical notation for the bass staff, measures 29-32. The key signature has one flat (B-flat). The melody starts on a dotted quarter note G2, followed by quarter notes A2, B2, and C3. Measure 30 has a dotted quarter note D3, quarter notes E3 and F3, and a dotted quarter note G3. Measure 31 has quarter notes A3 and B3, eighth notes C4 and D4, quarter notes E4 and F4, and a dotted quarter note G4. Measure 32 has quarter notes A4 and B4, eighth notes C5 and D5, quarter notes E5 and F5, and a dotted quarter note G5.

29



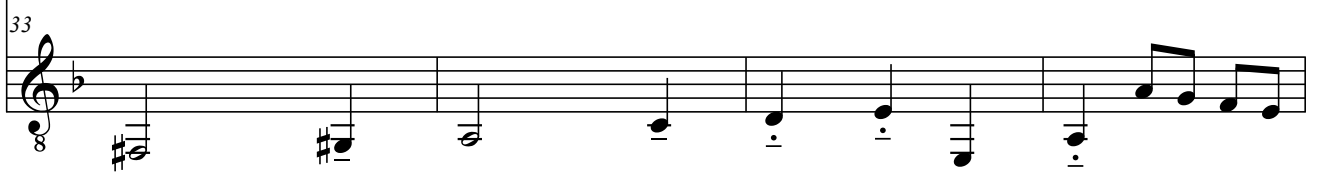
Musical notation for the treble staff, measures 29-32. The key signature has one flat (B-flat). The accompaniment consists of quarter notes: G2, A2, B2, C3, D3, E3, F3, G3, A3, B3, C4, D4, E4, F4, G4, A4, B4, C5, D5, E5, F5, G5.

33



Musical notation for the bass staff, measures 33-36. The key signature has one flat (B-flat). The melody starts on a dotted quarter note G2, followed by quarter notes A2, B2, and C3. Measure 34 has a dotted quarter note D3, quarter notes E3 and F3, and a dotted quarter note G3. Measure 35 has quarter notes A3 and B3, eighth notes C4 and D4, quarter notes E4 and F4, and a dotted quarter note G4. Measure 36 has quarter notes A4 and B4, eighth notes C5 and D5, quarter notes E5 and F5, and a dotted quarter note G5.

33

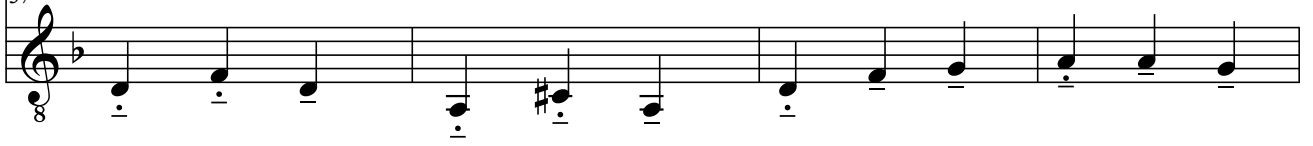


Musical notation for the treble staff, measures 33-36. The key signature has one flat (B-flat). The accompaniment consists of quarter notes: G2, A2, B2, C3, D3, E3, F3, G3, A3, B3, C4, D4, E4, F4, G4, A4, B4, C5, D5, E5, F5, G5.

37



37



41



41



45



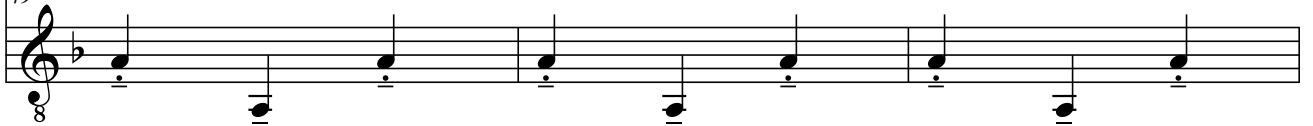
45



49



49



52



*rit.*

52

