

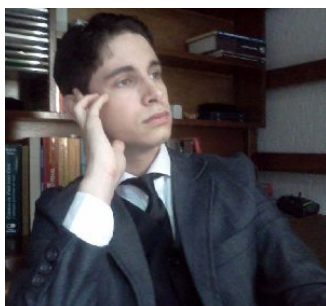


Raul Barcelo Souza

Composer

Brazil, São Paulo

About the piece



Title: The hard way to get the moon
Composer: Souza, Raul Barcelo
Licence: Raul Souza © All rights reserved
Publisher: Souza, Raul Barcelo
Instrumentation: Piano, Violin, Cello
Style: Contemporary

Raul Barcelo Souza on [free-scores.com](http://www.free-scores.com)

<http://www.free-scores.com/Download-PDF-Sheet-Music-raul-barcelo.htm>

- Contact the artist
- Write feedback comments
- Share your MP3 recording
- Web page access with QR Code :



This work is not Public Domain. You must contact the artist for any use outside the private area.

The Hard Way to Get The Moon

Souza, R.B.

Moderate ♩ = 120

1

Piano

Piano

Cello

Strings

Detailed description: This system contains the first four measures of the piece. The Piano part features a melodic line with a fermata over the first measure and a complex harmonic accompaniment. The second Piano part provides a rhythmic accompaniment with eighth notes and rests. The Cello and Strings parts are currently silent, indicated by a whole rest in each staff.

5

Piano

Piano

Cello

Strings

Detailed description: This system contains measures 5 through 8. The Piano part continues with its melodic and harmonic development. The second Piano part continues with its rhythmic accompaniment. The Cello and Strings parts remain silent, each marked with a whole rest.

9

Piano

Piano

Cello

Strings

Detailed description: This system contains measures 9 through 12. The Piano part continues with its melodic and harmonic development. The second Piano part continues with its rhythmic accompaniment. The Cello and Strings parts remain silent, each marked with a whole rest.

13

Piano

Piano

Cello

Strings

This system contains measures 13 through 16. The Piano part features a melodic line with a key signature of two sharps (F# and C#) and a common time signature. The accompaniment consists of chords and moving bass lines. The Cello and Strings parts are marked with a '13' and contain rests for all four measures.

17

Piano

Piano

Cello

Strings

This system contains measures 17 through 20. The Piano part continues the melodic and harmonic development. The Cello and Strings parts are marked with a '17' and contain rests for all four measures.

21

Piano

Piano

Cello

Strings

This system contains measures 21 through 24. The Piano part continues the melodic and harmonic development. The Cello and Strings parts are marked with a '21' and contain rests for all four measures.

25

Piano

25

Piano

25

Cello

25

Strings

Detailed description: This system contains measures 25 through 29. The Piano part features a melodic line with eighth and sixteenth notes, often accompanied by chords. The Cello and Strings parts are mostly silent, indicated by a horizontal bar across the staves.

30

Piano

30

Piano

30

Cello

30

Strings

Detailed description: This system contains measures 30 through 34. The Piano part continues with its melodic line. The Cello part has some activity, with notes appearing in measures 32, 33, and 34. The Strings part remains silent.

34

Piano

35

Piano

35

Cello

35

Strings

Detailed description: This system contains measures 35 through 39. The Piano part continues with its melodic line. The Cello part has some activity, with notes appearing in measures 36, 37, 38, and 39. The Strings part remains silent.

Piano 39

Piano 39

Cello 39

Strings 39

Piano 43

Piano 43

Cello 43

Strings 43

Piano 47

Piano 47

Cello 47

Strings 47

51

Piano

Piano

Cello

Strings

54

Piano

Piano

Cello

Strings

58

Piano

Piano

Cello

Strings

63

Piano

Piano

Cello

Strings

69

Piano

Piano

Cello

Strings

75

Piano

Piano

Cello

Strings

79
Piano
Piano
Cello
Strings

84
Piano
Piano
Cello
Strings

90
Piano
Piano
Cello
Strings

96
Piano
Piano
Cello
Strings

102 **p**

Piano

102

Piano

102

Cello

102

Strings

The image shows a musical score for three instruments: Piano, Cello, and Strings. The score is written on three staves. The first staff is for the Piano, the second for the Cello, and the third for the Strings. The measure number 102 is written at the beginning of each staff. The Piano part has a dynamic marking of **p** (piano) above the first measure. The Cello part has a dynamic marking of **p** above the first measure. The Strings part has a dynamic marking of **p** above the first measure. The score is written in a standard musical notation style with a treble clef for the Piano and Cello, and a bass clef for the Strings. The notes are mostly whole notes and half notes, with some rests. The Piano part has a few notes in the first measure, followed by a rest. The Cello part has a few notes in the first measure, followed by a rest. The Strings part has a few notes in the first measure, followed by a rest. The score is written in a standard musical notation style with a treble clef for the Piano and Cello, and a bass clef for the Strings. The notes are mostly whole notes and half notes, with some rests. The Piano part has a few notes in the first measure, followed by a rest. The Cello part has a few notes in the first measure, followed by a rest. The Strings part has a few notes in the first measure, followed by a rest.