

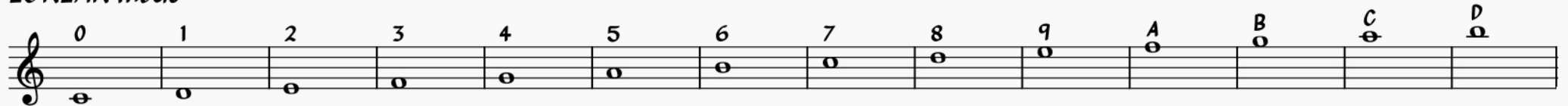
Foundmusic in Pi, base 14

A Looking-glass Canon

created with the first fifteen digits mapped into IONIAN mode

3.1DA75 CDA81 3754

IONIAN mode



♩ = 118 *Original melody* ... and its Reflection D Sheldon

A musical score in 2/4 time. The top staff is the original melody, and the bottom staff is its reflection. The melody starts with a treble clef and a 2/4 time signature. The notes are: 3 (F), 1 (D), A (F), 7 (C), 5 (A), C (A), D (B), A (F), 8 (D), 1 (D), 3 (F), 7 (C), 5 (A), 4 (G). The reflection is a mirror image of the original melody.

R and O exactly together

A musical score in 2/4 time, starting at measure 17. The top staff is the original melody, and the bottom staff is its reflection. The notes are: 3 (F), 1 (D), A (F), 7 (C), 5 (A), C (A), D (B), A (F), 8 (D), 1 (D), 3 (F), 7 (C), 5 (A), 4 (G). The reflection is a mirror image of the original melody.

O and O 2bars displaced

A musical score in 2/4 time, starting at measure 25. The top staff is the original melody, and the bottom staff is its reflection. The notes are: 3 (F), 1 (D), A (F), 7 (C), 5 (A), C (A), D (B), A (F), 8 (D), 1 (D), 3 (F), 7 (C), 5 (A), 4 (G). The reflection is a mirror image of the original melody, displaced by two bars.

2

R and R 2bars displaced

35

O and O+ 2bars displaced

45

R and R+ 2bars displaced

55

and finally...

65

3 1 D A 7 5 C D A 8 1 3 7 5 4