



# MICHAEL MAGATAGAN

United States (USA), SierraVista

## "Ellens Gesang II" for Flute & Strings (D.838 Op.52 No. 2) Schubert, Franz Peter

### About the artist

Im a software engineer. Basically, Im computer geek who loves to solve problems. I have been developing software for the last 25+ years but have recently rekindled my love of music. Many of my scores are posted with individual parts and matching play-along however, this is not always practical. If you would like individual parts to any of my scores or other specific tailoring, please contact me directly and I will try to accommodate your specific needs.

**Artist page :** <https://www.free-scores.com/Download-PDF-Sheet-Music-magataganm.htm>

### About the piece

|                         |  |
|-------------------------|--|
| <b>Title:</b>           | "Ellens Gesang II" for Flute & Strings [D.838 Op.52 No. 2]   |
| <b>Composer:</b>        | Schubert, Franz Peter  |
| <b>Arranger:</b>        | MAGATAGAN, MICHAEL   |
| <b>Copyright:</b>       | Public Domain  |
| <b>Publisher:</b>       | MAGATAGAN, MICHAEL   |
| <b>Instrumentation:</b> | Flute and String Quartet   |
| <b>Style:</b>           | Classical  |
| <b>Comment:</b>         | Franz Peter Schubert (1797 – 1828) was an Austrian composer of the late Classical and early Romantic eras. Despite his short life, Schubert left behind a vast oeuvre, including more than 600 secular vocal works (mainly lieder), seven complete symphonies, sacred music, operas, incidental music, and a large body of piano and chamber music. His major works include the art song "Erlkönig", the Piano Trout Quintet in A major, the ... (more online) |

MICHAEL MAGATAGAN on [free-scores.com](https://www.free-scores.com)



- listen to the audio
- share your interpretation
- comment
- contact the artist



# "Ellen's Gesang II"

(Ellen's Second Song)

Franz Schubert (D.838 Op.52 No. 2) 1825

Interpretation for Flute & Strings by Mike Magatagan 2023

**Etwas geschwind. (♩ = 120)**

The score is arranged for Flute and a string quartet (Violin I, Violin II, Viola, Cello). It is in the key of E-flat major (three flats) and 2/4 time. The tempo is marked 'Etwas geschwind.' with a quarter note equal to 120 beats per minute. The piece is divided into three systems of staves. The first system (measures 1-7) features the Flute and strings. The second system (measures 8-14) continues the Flute and strings. The third system (measures 15-21) continues the Flute and strings. Dynamics include *mf* (mezzo-forte), *dim.* (diminuendo), and *mp* (mezzo-piano). The score includes various musical notations such as slurs, accents, and hairpins.

20

Fl  
V1  
V2  
Va  
Vc

25

Fl  
V1  
V2  
Va  
Vc

*cresc.*  
*cresc.*

31

Fl  
V1  
V2  
Va  
Vc

*dim.*  
*dim.*  
*dim.*  
*dim.*  
*mp*  
*mp*  
*mp*  
*mp*

38

Fl  
V1  
V2  
Va  
Vc

42

Fl  
V1  
V2  
Va  
Vc

48

Fl  
V1  
V2  
Va  
Vc

55

Fl

V1

V2

Va

Vc

*mp*

*mp*

60

Fl

V1

V2

Va

Vc

*cresc.*

*f*

*mf*

*mf*

*mf*

*mf*

65

Fl

V1

V2

Va

Vc

*mf*

*mp*

*mp*

*mp*

*mp*

68

Fl  
V1  
V2  
Va  
Vc

72

Fl  
V1  
V2  
Va  
Vc

76

*rit.*

Fl  
V1  
V2  
Va  
Vc

*dim.*  
*dim.*  
*dim.*  
*dim.*  
*p*  
*p*  
*p*  
*p*

Flute

# "Ellen's Gesang II"

(Ellen's Second Song)

Franz Schubert (D.838 Op.52 No. 2) 1825

Interpretation for Flute & Strings by Mike Magatagan 2023

Etwas geschwind. (♩ = 120)

2

*mf*

8

17

25

5

38

47

5

55

*cresc.* *f*

64

*mf*

72

*rit.*

2

Violin 1

# "Ellen's Gesang II"

(Ellen's Second Song)

Franz Schubert (D.838 Op.52 No. 2) 1825

Interpretation for Flute & Strings by Mike Magatagan 2023

Etwas geschwind. (♩ = 120)

2

*mf*

*dim.*

*mp*

8

*mp*

*mp*

17

*mp*

25

*dim.*

*mp*

34

41

49

55

*mp*

*mf*

64

*mp*

72

*rit.*

*dim.*

*p*



Violin 2

# "Ellen's Gesang II"

(Ellen's Second Song)

Franz Schubert (D.838 Op.52 No. 2) 1825

Interpretation for Flute & Strings by Mike Magatagan 2023

Etwas geschwind. (♩ = 120)

2

*mf* *dim.* *mp*

8 *mp*

12

17 *mp*

20

22

26 *cresc.*

29 *dim.*

33 *mp*

37

40

42



46



50



55



59



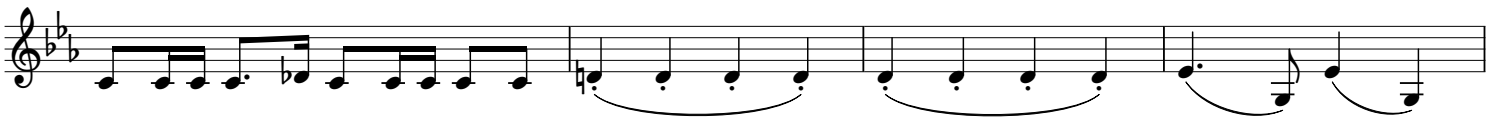
64



67



69



73



*rit.*

77



Viola

# "Ellen's Gesang II"

(Ellen's Second Song)

Franz Schubert (D.838 Op.52 No. 2) 1825

Interpretation for Flute & Strings by Mike Magatagan 2023

Etwas geschwind. (♩ = 120)

8

mf dim. mp

17

mp

23

mp

32

cresc. dim.

40

(dim.) mp

46

mp

55

mf

64

mp

71

rit. dim. p

Cello

# "Ellen's Gesang II"

(Ellen's Second Song)

Franz Schubert (D.838 Op.52 No. 2) 1825

Interpretation for Flute & Strings by Mike Magatagan 2023

Etwas geschwind. (♩ = 120)

2

*mf* *dim.* *mp*

Measures 1-7: The piece begins with a double bar line and a fermata. Measure 1 contains a whole note G2. Measure 2 starts with a half note G2, followed by eighth notes A2, B2, and C3. Measures 3-5 continue with eighth notes: D3, E3, F3, G3, A3, B3, C4, D4, E4, F4, G4, A4, B4, C5. Measure 6 has a half note G4, and measure 7 has a whole note G4. Dynamics: *mf* with a hairpin starting at measure 2 and ending at measure 7, *dim.* at the end of measure 7, and *mp* at the start of measure 8.

8

*mp*

Measures 8-16: Measure 8 has a half rest, followed by a half note G2. Measures 9-10 have eighth notes: A2, B2, C3, D3, E3, F3, G3, A3, B3, C4, D4, E4, F4, G4, A4, B4, C5. Measure 11 has a half note G4. Measure 12 has a half rest, followed by a half note G2. Measures 13-16 continue with eighth notes: A2, B2, C3, D3, E3, F3, G3, A3, B3, C4, D4, E4, F4, G4, A4, B4, C5. Dynamics: *mp* at the start of measure 8.

17

Measures 17-25: Measure 17 has a half note G2. Measures 18-20 have eighth notes: A2, B2, C3, D3, E3, F3, G3, A3, B3, C4, D4, E4, F4, G4, A4, B4, C5. Measure 21 has a half note G4. Measure 22 has a half rest, followed by a half note G2. Measures 23-25 continue with eighth notes: A2, B2, C3, D3, E3, F3, G3, A3, B3, C4, D4, E4, F4, G4, A4, B4, C5. Dynamics: *mp* at the start of measure 17.

26

*dim.* *mp*

Measures 26-33: Measure 26 has a half note G2. Measure 27 has a half rest, followed by a half note G2. Measure 28 has a half note G2. Measures 29-31 have eighth notes: A2, B2, C3, D3, E3, F3, G3, A3, B3, C4, D4, E4, F4, G4, A4, B4, C5. Measure 32 has a half note G4. Measure 33 has a whole note G4. Dynamics: *dim.* at the start of measure 29, and *mp* at the start of measure 34.

34

Measures 34-39: Measure 34 has a half rest, followed by a half note G2. Measures 35-36 have eighth notes: A2, B2, C3, D3, E3, F3, G3, A3, B3, C4, D4, E4, F4, G4, A4, B4, C5. Measure 37 has a half note G4. Measure 38 has a half rest, followed by a half note G2. Measure 39 has a half note G2. Dynamics: *mp* at the start of measure 34.

40

Measures 40-47: Measure 40 has a half note G2. Measures 41-42 have eighth notes: A2, B2, C3, D3, E3, F3, G3, A3, B3, C4, D4, E4, F4, G4, A4, B4, C5. Measure 43 has a half note G4. Measure 44 has a half rest, followed by a half note G2. Measures 45-47 continue with eighth notes: A2, B2, C3, D3, E3, F3, G3, A3, B3, C4, D4, E4, F4, G4, A4, B4, C5. Dynamics: *mp* at the start of measure 40.

48

Measures 48-54: Measure 48 has a half note G2. Measure 49 has a half rest, followed by a half note G2. Measures 50-51 have eighth notes: A2, B2, C3, D3, E3, F3, G3, A3, B3, C4, D4, E4, F4, G4, A4, B4, C5. Measure 52 has a half note G4. Measure 53 has a half rest, followed by a half note G2. Measure 54 has a whole note G4. Dynamics: *mp* at the start of measure 48.

55

*mf*

Measures 55-63: Measure 55 has a half rest, followed by a half note G2. Measures 56-57 have eighth notes: A2, B2, C3, D3, E3, F3, G3, A3, B3, C4, D4, E4, F4, G4, A4, B4, C5. Measure 58 has a half note G4. Measure 59 has a half rest, followed by a half note G2. Measures 60-63 continue with eighth notes: A2, B2, C3, D3, E3, F3, G3, A3, B3, C4, D4, E4, F4, G4, A4, B4, C5. Dynamics: *mf* at the start of measure 55.

64

*mp* *rit.*

Measures 64-71: Measure 64 has a half note G2. Measures 65-66 have eighth notes: A2, B2, C3, D3, E3, F3, G3, A3, B3, C4, D4, E4, F4, G4, A4, B4, C5. Measure 67 has a half note G4. Measure 68 has a half rest, followed by a half note G2. Measures 69-71 continue with eighth notes: A2, B2, C3, D3, E3, F3, G3, A3, B3, C4, D4, E4, F4, G4, A4, B4, C5. Dynamics: *mp* at the start of measure 64, and *rit.* at the start of measure 72.

72

*dim.*

Measures 72-79: Measure 72 has a half note G2. Measure 73 has a half rest, followed by a half note G2. Measure 74 has a half note G2. Measures 75-77 have eighth notes: A2, B2, C3, D3, E3, F3, G3, A3, B3, C4, D4, E4, F4, G4, A4, B4, C5. Measure 78 has a half note G4. Measure 79 has a whole note G4. Dynamics: *dim.* at the start of measure 75.