



# Mike Magatagan

United States (USA), SierraVista

## Magnificat in C Major for Woodwind Quartet Scarlatti, Domenico

### About the artist

I'm a software engineer. Basically, I'm computer geek who loves to solve problems. I have been developing software for the last 25+ years but have recently rekindled my love of music.

Many of my scores are posted with individual parts and matching play-along however, this is not always practical. If you would like individual parts to any of my scores or other specific tailoring, please contact me directly and I will try to accommodate your specific needs.

**Artist page :** <https://www.free-scores.com/Download-PDF-Sheet-Music-magataganm.htm>

### About the piece



<b>Title:</b>	Magnificat in C Major for Woodwind Quartet
<b>Composer:</b>	Scarlatti, Domenico
<b>Arranger:</b>	Magatagan, Mike
<b>Copyright:</b>	Public Domain
<b>Publisher:</b>	Magatagan, Mike
<b>Instrumentation:</b>	Flute, Oboe, French Horn & Bassoon
<b>Style:</b>	Baroque
<b>Comment:</b>	Giuseppe Domenico Scarlatti, also known as Domingo Scarlatti (1685 – 1757), was an Italian composer. He is primarily known as a Baroque composer chronologically, although he was influential in the development of the Classical style. He is the renowned father Alessandro Scarlatti, he composed in various musical forms, although today he is known mainly for his keyboard sonatas. He spent much of his life in the service of the Spanish court (online)

Mike Magatagan on [free-scores.com](https://www.free-scores.com)



- listen to the audio
- share your interpretation
- comment
- contact the artist



# "Magnificat" in C Major

Domenico Scarlatti (1685–1757)

Interpretation for Woodwind Quartet by Mike Magatagan 2023

**I. Magnificat** (♩ = 100)

Flute *mf*

Oboe *mf*

Horn in F *mf*

Bassoon *mf*

9

Fl

Ob

Fh

Ba

16

Fl

Ob

Fh

Ba

22

Fl  
Ob  
Fh  
Ba

29

Fl  
Ob  
Fh  
Ba

36

Fl  
Ob  
Fh  
Ba

44

Fl  
Ob  
Fh  
Ba

This system contains measures 44 through 49. The Flute part (Fl) begins with a melodic line of eighth notes, moving from G4 to A4, B4, C5, and then descending. The Oboe part (Ob) has rests in measures 44-45 and then enters in measure 46 with a melodic line. The F horn part (Fh) plays a rhythmic pattern of eighth notes. The Bassoon part (Ba) plays a melodic line with eighth notes and some slurs.

50

Fl  
Ob  
Fh  
Ba

This system contains measures 50 through 55. The Flute part (Fl) continues its melodic line. The Oboe part (Ob) has a melodic line with some slurs. The F horn part (Fh) continues its rhythmic pattern. The Bassoon part (Ba) continues its melodic line.

56 *rit.* *tr* *a Tempo*

Fl  
Ob  
Fh  
Ba

This system contains measures 56 through 61. Measure 56 includes performance markings: *rit.* (ritardando), *tr* (trill), and *a Tempo* (return to tempo). The Flute part (Fl) has a trill on G4. The Oboe part (Ob) has a trill on G4. The F horn part (Fh) has a trill on G4. The Bassoon part (Ba) has a trill on G4.

64

Fl  
Ob  
Fh  
Ba

This system of music covers measures 64 through 71. It features four staves: Flute (Fl), Oboe (Ob), Fagotto (Fh), and Bassoon (Ba). The Flute part begins with a melodic line of eighth and sixteenth notes. The Oboe part has a more active role with eighth notes and some slurs. The Fagotto part is mostly rests with some chordal accompaniment. The Bassoon part provides a steady bass line with eighth notes and some slurs.

72

Fl  
Ob  
Fh  
Ba

This system of music covers measures 72 through 79. The Flute part is mostly rests, with some notes appearing in the later measures. The Oboe part continues with a melodic line of eighth notes. The Fagotto part has a melodic line with some slurs and accidentals. The Bassoon part has a melodic line with slurs and some accidentals.

80

Fl  
Ob  
Fh  
Ba

This system of music covers measures 80 through 87. The Flute part has a melodic line with slurs and some accidentals. The Oboe part has a melodic line with slurs and some accidentals. The Fagotto part has a melodic line with slurs and some accidentals. The Bassoon part has a melodic line with slurs and some accidentals.

87

Fl  
Ob  
Fh  
Ba

This system of music covers measures 87 to 94. It features four staves: Flute (Fl), Oboe (Ob), Fagot (Fh), and Bassoon (Ba). The Flute part begins with a melodic line in measure 87, while the Oboe, Fagot, and Bassoon parts have rests. In measure 88, the Oboe and Bassoon parts enter with a rhythmic accompaniment. The Fagot part also enters in measure 88. The music continues with various rhythmic patterns and rests across the remaining measures.

95

Fl  
Ob  
Fh  
Ba

This system of music covers measures 95 to 101. The Flute part continues its melodic line, often with slurs. The Oboe part has rests in measures 95 and 96, then enters in measure 97. The Fagot and Bassoon parts continue their accompaniment. The music concludes with a final note in measure 101.

102

Fl  
Ob  
Fh  
Ba

This system of music covers measures 102 to 105. The Flute part has rests in measures 102 and 103, then enters in measure 104. The Oboe part has rests in measures 102 and 103, then enters in measure 104. The Fagot and Bassoon parts continue their accompaniment. The music concludes with a final note in measure 105.

108 *rit.*

Fl  
Ob  
Fh  
Ba

**II. Fecit potentiam** (♩ = 120)

Flute  
Oboe  
Horn in F  
Bassoon

*mf*

8

Fl  
Ob  
Fh  
Ba

15

Fl  
Ob  
Fh  
Ba

This system contains measures 15 through 20. The Flute (Fl) part begins with a whole rest in measure 15, followed by a half note G4 with a sharp sign, and a half note F4. In measure 16, it has a whole rest. In measure 17, it plays a quarter note G4, quarter note A4, quarter note B4, and quarter note C5. In measure 18, it plays a half note G4-A4-B4-C5. In measure 19, it plays a half note G4-A4-B4-C5. In measure 20, it plays a half note G4, quarter note F4, and quarter note E4. The Oboe (Ob) part has whole rests in measures 15, 16, 17, and 18. In measure 19, it plays a half note G4 with a sharp sign, and a half note F4. In measure 20, it plays a quarter note G4, quarter note A4, and quarter note B4. The Flute (Fh) part has whole rests in measures 15 and 16. In measure 17, it plays a quarter note G4 with a sharp sign, quarter note A4, quarter note B4, and quarter note C5. In measure 18, it plays a half note G4-A4-B4-C5. In measure 19, it plays a half note G4-A4-B4-C5. In measure 20, it plays a quarter note G4, quarter note F4, and quarter note E4. The Bassoon (Ba) part has whole rests in measures 15, 16, 17, and 18. In measure 19, it plays a half note G4 with a sharp sign, and a half note F4. In measure 20, it plays a quarter note G4, quarter note A4, and quarter note B4.

21

Fl  
Ob  
Fh  
Ba

This system contains measures 21 through 26. The Flute (Fl) part plays a quarter note G4, quarter note A4, quarter note B4, and quarter note C5 in measure 21. In measure 22, it plays a quarter note G4, quarter note A4, quarter note B4, and quarter note C5. In measure 23, it plays a quarter note G4, quarter note A4, quarter note B4, and quarter note C5. In measure 24, it plays a half note G4-A4-B4-C5. In measure 25, it plays a half note G4 with a sharp sign, quarter note A4, quarter note B4, and quarter note C5. In measure 26, it plays a half note G4, quarter note F4, and quarter note E4. The Oboe (Ob) part has a half note G4 with a sharp sign in measure 21. In measure 22, it plays a quarter note G4, quarter note A4, quarter note B4, and quarter note C5. In measure 23, it plays a half note G4, quarter note A4, quarter note B4, and quarter note C5. In measure 24, it plays a half note G4 with a sharp sign, quarter note A4, quarter note B4, and quarter note C5. In measure 25, it plays a half note G4 with a sharp sign, quarter note A4, quarter note B4, and quarter note C5. In measure 26, it plays a quarter note G4, quarter note A4, and quarter note B4. The Flute (Fh) part has a quarter note G4 with a sharp sign in measure 21. In measure 22, it plays a quarter note G4, quarter note A4, quarter note B4, and quarter note C5. In measure 23, it plays a quarter note G4, quarter note A4, quarter note B4, and quarter note C5. In measure 24, it plays a quarter note G4 with a sharp sign, quarter note A4, quarter note B4, and quarter note C5. In measure 25, it plays a quarter note G4 with a sharp sign, quarter note A4, quarter note B4, and quarter note C5. In measure 26, it plays a quarter note G4, quarter note F4, and quarter note E4. The Bassoon (Ba) part has a quarter note G4, quarter note A4, quarter note B4, and quarter note C5 in measure 21. In measure 22, it plays a quarter note G4, quarter note A4, quarter note B4, and quarter note C5. In measure 23, it plays a quarter note G4, quarter note A4, quarter note B4, and quarter note C5. In measure 24, it plays a half note G4-A4-B4-C5. In measure 25, it plays a half note G4 with a sharp sign, quarter note A4, quarter note B4, and quarter note C5. In measure 26, it has a whole rest.

28

Fl  
Ob  
Fh  
Ba

This system contains measures 28 through 33. The Flute (Fl) part plays a quarter note G4, quarter note A4, quarter note B4, and quarter note C5 in measure 28. In measure 29, it plays a quarter note G4, quarter note A4, quarter note B4, and quarter note C5. In measure 30, it plays a quarter note G4, quarter note A4, quarter note B4, and quarter note C5. In measure 31, it plays a half note G4-A4-B4-C5. In measure 32, it plays a half note G4, quarter note F4, and quarter note E4. In measure 33, it plays a quarter note G4 with a sharp sign, quarter note A4, quarter note B4, and quarter note C5. The Oboe (Ob) part has a quarter note G4, quarter note A4, quarter note B4, and quarter note C5 in measure 28. In measure 29, it plays a quarter note G4, quarter note A4, quarter note B4, and quarter note C5. In measure 30, it plays a quarter note G4, quarter note A4, quarter note B4, and quarter note C5. In measure 31, it plays a half note G4 with a sharp sign, quarter note A4, quarter note B4, and quarter note C5. In measure 32, it plays a half note G4 with a sharp sign, quarter note A4, quarter note B4, and quarter note C5. In measure 33, it has a whole rest. The Flute (Fh) part has whole rests in measures 28, 29, 30, 31, 32, and 33. The Bassoon (Ba) part has whole rests in measures 28, 29, 30, 31, and 32. In measure 33, it plays a quarter note G4 with a sharp sign, quarter note A4, quarter note B4, and quarter note C5.



37 *rit.*

Fl  
Ob  
Fh  
Ba

**III. Esurientes implevit bonis (♩ = 110)**

Flute *mf*  
Oboe *mf*  
Horn in F *mf*  
Bassoon *mf*

9

Fl  
Ob  
Fh  
Ba

18

Fl  
Ob  
Fh  
Ba

25

Fl  
Ob  
Fh  
Ba

32

Fl  
Ob  
Fh  
Ba

40

Fl  
Ob  
Fh  
Ba

This system of music covers measures 40 through 47. It features four staves: Flute (Fl), Oboe (Ob), Fagotto (Fh), and Bassoon (Ba). The Flute part is the most active, with a melodic line that includes many slurs and ties. The Oboe part provides a steady accompaniment with eighth and sixteenth notes. The Fagotto and Bassoon parts are more rhythmic, often playing chords or single notes with rests.

48

Fl  
Ob  
Fh  
Ba

This system of music covers measures 48 through 54. The Flute part continues its melodic development with various ornaments and slurs. The Oboe part maintains its accompaniment role. The Fagotto and Bassoon parts show some rhythmic variation, with the Bassoon part featuring a melodic line in the later measures of this system.

55

Fl  
Ob  
Fh  
Ba

This system of music covers measures 55 through 61. The Flute part has a more active role with many slurs and ties. The Oboe part continues its accompaniment. The Fagotto and Bassoon parts have a more rhythmic and chordal texture, with the Bassoon part featuring a melodic line in the later measures of this system.

62

Fl  
Ob  
Fh  
Ba

This system contains measures 62 through 69. The Flute part features a melodic line with eighth and sixteenth notes, including a trill in measure 69. The Oboe part has a similar melodic line with some rests. The Flute Harmonica part provides harmonic support with eighth notes and rests. The Bassoon part has a bass line with eighth notes and rests.

70

Fl  
Ob  
Fh  
Ba

*rit.* **a Tempo**

This system contains measures 70 through 77. It begins with a *rit.* (ritardando) marking and ends with an **a Tempo** marking. The Flute part has a melodic line with a trill in measure 77. The Oboe part has a melodic line with some rests. The Flute Harmonica part provides harmonic support with eighth notes and rests. The Bassoon part has a bass line with eighth notes and rests.

78

Fl  
Ob  
Fh  
Ba

*tr*

This system contains measures 78 through 85. The Flute part has a melodic line with a trill in measure 85. The Oboe part has a melodic line with some rests. The Flute Harmonica part provides harmonic support with eighth notes and rests. The Bassoon part has a bass line with eighth notes and rests.

86

Fl  
Ob  
Fh  
Ba

Detailed description: This system contains measures 86 through 92. The Flute part (Fl) starts with a melodic line of eighth notes (G4, A4, Bb4, C5, Bb4, A4) followed by a half note G4. The Oboe (Ob) has a similar line but with a Bb4 instead of a B4. The Horn in F# (Fh) plays a half note G4, then a quarter note A4, and a half note Bb4. The Bassoon (Ba) plays a half note G3, then a quarter note A3, and a half note Bb3. There are various rests and phrasing slurs throughout the system.

93

Fl  
Ob  
Fh  
Ba

*rit.*

Detailed description: This system contains measures 93 through 98. The Flute (Fl) part features a melodic line with a trill on G4 in measure 95. The Oboe (Ob) and Bassoon (Ba) parts have more active lines with eighth and sixteenth notes. The Horn in F# (Fh) has a steady eighth-note accompaniment. A 'rit.' (ritardando) marking is placed above the Flute staff in measure 95. The system concludes with fermatas on the final notes of all instruments.

**IV. Gloria Patri et Filio** (♩ = 54)

Flute  
Oboe  
Horn in F  
Bassoon

*mf*

Detailed description: This system contains the first four measures of the section 'IV. Gloria Patri et Filio'. The tempo is marked as quarter note = 54. The dynamic is mezzo-forte (mf). The Flute, Oboe, and Bassoon parts have similar melodic lines, while the Horn in F part has a more rhythmic accompaniment. The key signature has one sharp (F#) and the time signature is common time (C).

5 *rit.*

Fl  
Ob  
Fh  
Ba

**V. Sicut erat in principio** (♩ = 120)

Flute  
Oboe  
Horn in F  
Bassoon

9

Fl  
Ob  
Fh  
Ba

16

Fl  
Ob  
Fh  
Ba

22

Fl  
Ob  
Fh  
Ba

27

Fl  
Ob  
Fh  
Ba

32

Fl  
Ob  
Fh  
Ba

This system contains measures 32 through 35. The Flute part begins with a half rest, followed by a melodic line starting on G4. The Oboe plays a steady eighth-note accompaniment. The F horn has a half rest in measure 32, then enters with a melodic line. The Bassoon provides a bass line with a half rest in measure 32, then a melodic line starting on G2.

37

Fl  
Ob  
Fh  
Ba

This system contains measures 37 through 40. The Flute part has a half rest in measure 37, then enters with a melodic line. The Oboe continues with eighth-note accompaniment. The F horn has a half rest in measure 37, then enters with a melodic line. The Bassoon continues with a bass line.

42

Fl  
Ob  
Fh  
Ba

This system contains measures 42 through 45. The Flute part has a half rest in measure 42, then enters with a melodic line. The Oboe continues with eighth-note accompaniment. The F horn has a half rest in measure 42, then enters with a melodic line. The Bassoon continues with a bass line.



48

Fl  
Ob  
Fh  
Ba

This system contains measures 48 through 52. The Flute (Fl) part begins with a melodic line of eighth notes, transitioning to a half-note melody. The Oboe (Ob) part follows a similar pattern, with a rest in measure 51. The F horn (Fh) part has rests in measures 48 and 49, then enters with a half-note melody. The Bassoon (Ba) part provides a steady accompaniment of eighth notes.

53

Fl  
Ob  
Fh  
Ba

This system contains measures 53 through 57. The Flute (Fl) part continues with a melodic line of half notes. The Oboe (Ob) part has a melodic line of eighth notes. The F horn (Fh) part has a melodic line of eighth notes. The Bassoon (Ba) part continues with a steady accompaniment of eighth notes.

58

*rit.*

Fl  
Ob  
Fh  
Ba

This system contains measures 58 through 62. The Flute (Fl) part features a melodic line of half notes with a trill in measure 61. The Oboe (Ob) part has a melodic line of eighth notes. The F horn (Fh) part has a melodic line of eighth notes. The Bassoon (Ba) part continues with a steady accompaniment of eighth notes. The system concludes with a double bar line.

# "Magnificat" in C Major

Flute

Domenico Scarlatti (1685–1757)

I. Magnificat (♩ = 100)

Interpretation for Woodwind Quartet by Mike Magatagan 2023

*mf*

12

24

35

46

*rit.* *tr* *a Tempo*

55

65

6

80

89

98

2

108

*rit.*

II. Fecit potentiam (♩ = 120)

Musical score for the second movement, "Fecit potentiam", in C major, 4/4 time, tempo 120. The score consists of five staves of music. The first staff begins with a dynamic marking of *mf* and a first ending bracket. The second staff starts at measure 11. The third staff starts at measure 21. The fourth staff starts at measure 30. The fifth staff starts at measure 39 and includes a *rit.* marking and a first ending bracket.

III. Esurientes implevit bonis (♩ = 110)

Musical score for the third movement, "Esurientes implevit bonis", in C major, 4/4 time, tempo 110. The score consists of six staves of music. The first staff begins with a dynamic marking of *mf*. The second staff starts at measure 12. The third staff starts at measure 24 and includes a first ending bracket with a "5" above it. The fourth staff starts at measure 39. The fifth staff starts at measure 49. The sixth staff starts at measure 59 and includes a *rit.* marking and an *a Tempo* marking. The seventh staff starts at measure 80 and includes a *tr* marking.

90

*rit.*



**IV. Gloria Patri et Filio** (♩ = 54)

*rit.*



**V. Sicut erat in principio** (♩ = 120)



10



18



28



37



43



53

*rit.*



# "Magnificat" in C Major

Oboe

Domenico Scarlatti (1685–1757)

I. Magnificat (♩ = 100)

Interpretation for Woodwind Quartet by Mike Magatagan 2023

*mf*

12

24

34

47

*rit.* **a Tempo**

55

66

76

85

97

106

II. Fecit potentiam ( $\text{♩} = 120$ )

*mf*

10

20

28

40

III. Esurientes implevit bonis ( $\text{♩} = 110$ )

*mf*

11

24

39

48

59

72

82

*a Tempo*

93

*rit.*



**IV. Gloria Patri et Filio** (♩ = 54)



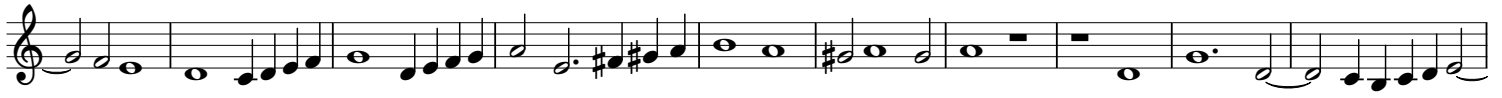
**V. Sicut erat in principio** (♩ = 120)



11



21



31



39



48



58

*rit.*



Horn in F

# "Magnificat" in C Major

Domenico Scarlatti (1685–1757)

I. Magnificat (♩ = 100)

Interpretation for Woodwind Quartet by Mike Magatagan 2023

6

*mf*

13

19

2

28

3

40

48

*rit.* **a Tempo**

55

64

73

4

85

5

98

107



II. Fecit potentiam (♩ = 120)

Musical score for II. Fecit potentiam, measures 1-40. The score is in G major and 3/4 time. It begins with a *mf* dynamic. The melody consists of eighth and quarter notes, with some rests. A fermata is placed over measures 23-24, with the number 10 written above it. The piece concludes with a final note and a fermata.

III. Esurientes implevit bonis (♩ = 110)

Musical score for III. Esurientes implevit bonis, measures 1-78. The score is in G major and 3/4 time. It begins with a *mf* dynamic. The melody features a mix of eighth, quarter, and half notes. There are several fermatas: one over measures 10-11, one over measures 21-22 with the number 7 above it, one over measures 36-37 with the number 5 above it, one over measures 49-50 with the number 2 above it, and one over measures 68-69. The piece ends with a final note and a fermata. The tempo marking *a Tempo* appears at the end of the score.

90

*rit.*



**IV. Gloria Patri et Filio (♩ = 54)**



**V. Sicut erat in principio (♩ = 120)**



9



19



26



35



42



51



58

*rit.*



Bassoon

# "Magnificat" in C Major

Domenico Scarlatti (1685–1757)

## I. Magnificat (♩ = 100)

Interpretation for Woodwind Quartet by Mike Magatagan 2023

7

*mf*

19

30

5

44

*rit.* **a Tempo**

53

2

67

4

80

88

6

103

## II. Fecit potentiam (♩ = 120)

*mf*

13

23

6

40



III. Esurientes implevit bonis (♩ = 110)



*mf*

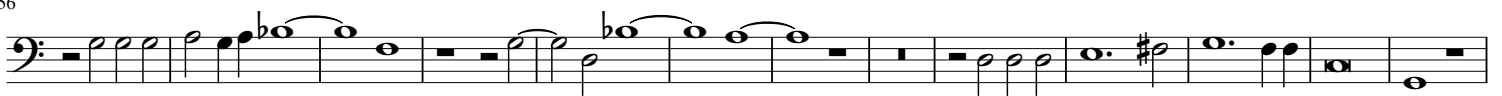
19



42

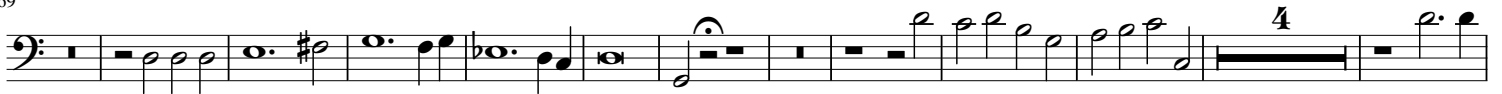


56



69

*a Tempo*



85

*rit.*



IV. Gloria Patri et Filio (♩ = 54)



*mf*

V. Sicut erat in principio (♩ = 120)



26



37



48



56

*rit.*

