



Bernard Dewagtere

France, SIN LE NOBLE

Gymnopédie 1 (3 Gymnopédies) Satie, Erik

About the artist

Doctor in musicology, conductor and composer.

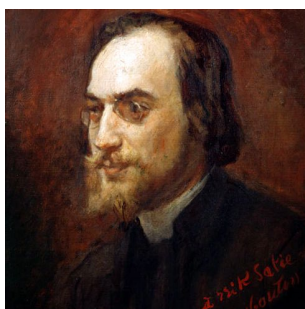
Compositions and arrangements from all eras, in all styles or musical genres and for any instrument or vocal training.

Qualification: PhD Musicology

Associate: SACEM - IPI code of the artist : 342990

Artist page : <https://www.free-scores.com/Download-PDF-Sheet-Music-bernard-dewagtere.htm>

About the piece



Title: Gymnopédie 1 [3 Gymnopédies]
Composer: Satie, Erik
Arranger: Dewagtere, Bernard
Copyright: Copyright © Dewagtere, Bernard
Instrumentation: Clarinet, piano and/or guitar or organ
Style: Romantic
Comment:

Bernard Dewagtere on [free-scores.com](https://www.free-scores.com)

LICENSE

This sheet music requires an authorization
- for public performances
- for use by teachers

Buy this license at :

<https://www.free-scores.com/licence-partition-uk.php?partition=53068>



- listen to the audio
- share your interpretation
- comment
- pay the licence
- contact the artist

Prohibited distribution on other website.

Gymnopédie n°2

à Mademoiselle Jeanne de Bret

Erik Satie (1888)

Transc. : Bernard Dewagtere

Lent et douloureux ♩ = 66

Clarinete en Sib

Clarinet in B-flat part: Treble clef, key signature of three sharps (F#, C#, G#), 3/4 time. Measures 1-8. Dynamics: *pp*. A long slur covers measures 5-8. Chord diagrams are provided below the staff.

Piano part: Treble and Bass clefs, key signature of three sharps, 3/4 time. Measures 1-8. Dynamics: *pp*. The bass line consists of quarter notes: G2, F#2, G2, F#2, G2, F#2, G2, F#2.

Chord diagrams for Clarinet in B-flat:
GM7, DM7, GM7, DM7, GM7, DM7, GM7, DM7

Cl. (Sib)

Clarinet in B-flat part: Treble clef, key signature of three sharps, 3/4 time. Measures 9-17. Dynamics: *f* in measure 9, *pp* in measure 10. A long slur covers measures 10-17. Chord diagrams are provided below the staff.

Piano part: Treble and Bass clefs, key signature of three sharps, 3/4 time. Measures 9-17. Dynamics: *f*. The bass line continues with quarter notes: G2, F#2, G2, F#2, G2, F#2, G2, F#2, G2, F#2, G2, F#2.

Chord diagrams for Clarinet in B-flat:
GM7, DM7, GM7, DM7, GM7, DM7, GM7, DM7, F#m

Cl. (Sib)

Clarinet in B-flat part: Treble clef, key signature of three sharps, 3/4 time. Measures 18-25. Dynamics: *p*. A long slur covers measures 18-25. Chord diagrams are provided below the staff.

Piano part: Treble and Bass clefs, key signature of three sharps, 3/4 time. Measures 18-25. Dynamics: *p*. The bass line continues with quarter notes: G2, F#2, G2, F#2, G2, F#2, G2, F#2, G2, F#2, G2, F#2.

Chord diagrams for Clarinet in B-flat:
B m, E m, D m, A m, E m/D (7fr.), A m/D (5fr.), F#dim/D (4fr.)

Gymnopédie n°2

Cl. (Sib)

27

F/D 8fr. A m/D 5fr. E m/D 7fr. A m/D 5fr. F#dim/D 4fr. E m F#m/D B m A/E

Pno

Cl. (Sib)

36

F#m/E B m7/E m7 A m7 D G M7 D M7 G M7 D M7 G M7

Pno

pp

Cl. (Sib)

45

D M7 G M7 D M7 G M7 D M7 G M7 D M7 G M7 D M7

Pno

f *pp*

Gymnopédie n°2

54

Cl. (Sib)

G M7 D M7 F#m B m E m D m A m E m/D

54

Pno

p

3

63

Cl. (Sib)

E m/D A m/D F#dim/D F/D A m/D E m/D A m/D F#dim/D E m

63

Pno

72

Cl. (Sib)

D m/E F/E A m/E F/E B m7/EE m7 A m7 D

72

Pno