



# Niksa Lendic

Arranger, Interpreter, Publisher

Croatia

## About the artist

Publisher and organist, from Split (Croatia)

**Artist page :** <http://www.free-scores.com/Download-PDF-Sheet-Music-nlendic.htm>

## About the piece



**Title:** La chanson du bébé  
**Composer:** Rossini, Gioacchino  
**Arranger:** Lendic, Niksa  
**Copyright:** Copyright © LENDIC NIKSA  
**Publisher:** Lendic, Niksa  
**Style:** Opera

## Niksa Lendic on [free-scores.com](http://free-scores.com)



This work is not Public Domain. You must contact the artist for any use outside the private area.



- listen to the audio
- share your interpretation
- comment
- contact the artist

# LA CHANSON DU BEBE

Gioachino Rossini

**Allegretto**

Piano

*pp*

8

*p* *cresc.* *ff* *pp*

15

Mezzo soprano

*p*  
Ma man, le gros Bé - bé t'ap-pel-le il a bo - bo: tu

*pp* *sf* *pp*

22

*p*  
dis que je suis beau quand je veux bien fai-re do - do. Je veux de con-fu - tu-res, c'est du

*sf*

28

bon na - nan; les gro-se il les sont mu-res don-ne m'en j'en veux ma man. Je

34 **poco rit.***a tempo*

veux du bon na - nan, j'ai du bo-bo ma-man. At - chi, at - chi, at -

40

*mf*

chi, at - chi! Pa - pa, ma man, ca - ca

46

At - chi!

52

*f**con semplicita**pp*

At- chi!

Be - be vou - drai la

*con semplicita*

58



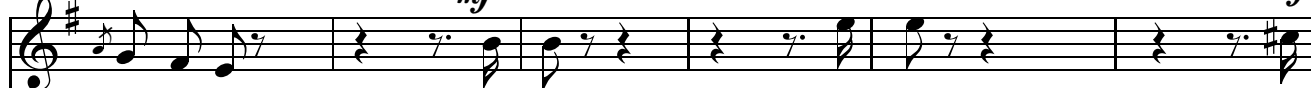
chan - son du sa-peur dans "Bar - be bleue" un air qui fait bien peur. Ma

64



man, ta voix si dou-ce en chan-tant ca, en - fon - ce - rait Schnei-der et

71

*mf**p**mf*

Thé-ré-sa.

At- chi,

at - chi,

at

77

chi, at - chi! Pi - pi, ma

83

man, pa - pa, ca - ca. Ma bon-ne en me ber

rit. . . *f* *a tempo*

rit. . . *pp* *a tempo*

89

cant m'ap-pel-le son bi - jou, un dia-ble un sa-pa - jou si j'ai-memieux fai-re jou

95

jou. Quand je ne suis pas sa-ge on me-pro - met le fouet!... Moi je fais du ta-

101

**poco rit.**

pa-ge le mo-yen re-us-sit bien. Je veux du bon na-nan, j'ai du bo-bo ma-

**poco rit.**

107

**a tempo**

man. At-chi, at-chi, at-chi, at-chi! Pa-pa, ma man,

**a tempo**

114

**mf**

ca - ca. \_\_\_\_\_ At-chi!

120

**f****pp**

At-chi! Pi pi, \_\_\_\_\_ ma-man, \_\_\_\_\_ pa-pa, \_\_\_\_\_

126

ca- ca, pi pi, ma man, pa pa, ca ca, pi-pi, pi

*f*

*cresc.*

*f*

Detailed description: This system contains measures 126 through 131. The vocal line features a rhythmic pattern of eighth notes with lyrics: "ca- ca, pi pi, ma man, pa pa, ca ca, pi-pi, pi". The piano accompaniment consists of chords with eighth-note patterns. Dynamics include *f* at the start and *cresc.* leading to *f* at the end.

132

pi ma-man ma man pa pa pa - pa ca ca ca - ca

*ff*

*ff*

Detailed description: This system contains measures 132 through 137. The vocal line continues with lyrics: "pi ma-man ma man pa pa pa - pa ca ca ca - ca". The piano accompaniment features a more complex rhythmic pattern with accents. Dynamics are marked *ff* throughout.

138

Detailed description: This system contains measures 138 through 141. It shows the piano accompaniment for these measures, featuring a rhythmic pattern of eighth notes with accents in both the treble and bass staves.

142

*f*

*fff*

*8va-1*

*Ped.*

*\**

Detailed description: This system contains measures 142 through 145. The piano accompaniment features a rhythmic pattern of eighth notes with accents. Dynamics include *f* and *fff*. A dynamic marking *8va-1* is present above the final measure. Pedal markings *Ped.* and *\** are at the bottom.