



Bruno Vérol

France, Mende

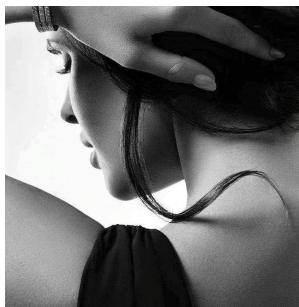
NOCTURNE (Op.36)

About the artist

Bruno Vérol, musician non professional French, organist is the author of various parts for organ, piano, orchestra, voice and organ, he is pupil of Philippe Cuny (Titular of the organ of St Amans de Rodez), continues his instrumental studies at the departmental school of Lozere (EDML). Also raises in musical composition with Polyphonies (remote School of writing and musical composition)
He lives now in Mende, in Languedoc Roussillon (France).

Artist page : <https://www.free-scores.com/Download-PDF-Sheet-Music-alchimiste.htm>

About the piece



Title: NOCTURNE [Op.36]
Composer: Vérol, Bruno
Copyright: Copyright © Bruno Vérol
Publisher: Vérol, Bruno
Instrumentation: Piano solo
Style: Romantic

Bruno Vérol on [free-scores.com](https://www.free-scores.com)



This work is not Public Domain. You must contact the artist for any use outside the private area.

Prohibited distribution on other website.



- listen to the audio
- share your interpretation
- comment
- contact the artist

NOCTURNE

en sol mineur



Musique : Bruno VEROL

@ 2013 - Tout droit réservé - Reproduction interdite

Bruno VEROL

NOCTURNE

Op. 36

Pour piano

NOCTURNE en sol mineur

Bruno VEROL Op. 36

Lento

Piano

p sostenuto

Ped. * Ped. * Ped. *

4 3 1 3 3 3

Ped. *

7 Ped. *

10 6 3 6 3

© 2013 - by Bruno Vérol and Uborn Verollini Editions
Tout droit Réservé - Reproduction interdite

UV-7913036

13

Ped. * Ped. * Ped. * Ped. * Ped. * Ped. *

16

f Ped. *

19

Ped. * Ped. * Ped. * Ped. *

22

Ped. * Ped. *

25

Ped. * Ped. *

28

6 3 3 3 3

Ped. * Ped. * Ped. * Ped. *

31

3 3 6 3 3

f Ped. *

34

3 3 3 3

leggiero Ped. * Ped. * Ped. *

37

3 3 3 3

dim. Ped. * Ped. * Ped. *

41

p Ped. * Ped. * Ped. *

45

p

This system contains measures 45 through 48. The left hand plays a series of chords in the bass clef, while the right hand plays a melodic line in the treble clef. A piano (*p*) dynamic marking is present at the beginning of the system. A long slur covers the entire system.

49

This system contains measures 49 through 52. The left hand continues with chords, and the right hand has a more active melodic line. A piano (*p*) dynamic marking is present at the beginning of the system. A long slur covers the entire system.

53

This system contains measures 53 through 56. The left hand continues with chords, and the right hand has a more active melodic line. A piano (*p*) dynamic marking is present at the beginning of the system. A long slur covers the entire system.

57

p

This system contains measures 57 through 60. The left hand continues with chords, and the right hand has a more active melodic line. A piano (*p*) dynamic marking is present at the beginning of the system. A long slur covers the entire system.

61

This system contains measures 61 through 64. The left hand continues with chords, and the right hand has a more active melodic line. A piano (*p*) dynamic marking is present at the beginning of the system. A long slur covers the entire system.

65

p *pp* *p*

Ped. *

69

p

Ped. * Ped. * Ped. * Ped. *

72

p

Ped. * Ped. *

75

p

Ped. *

78

dim.

Ped. Ped. * Ped. * Ped. *

81

leg. * *leg.* *

83

leg. * *leg.* *

86

leg. * *leg.* *

89

leg. * *leg.* *

pp

leg. *