



Bernard Dewagtere

France, SIN LE NOBLE

Flight of the Bumblebee Rimsky-Korsakov, Nikolai

About the artist

Doctor in musicology, conductor and composer.

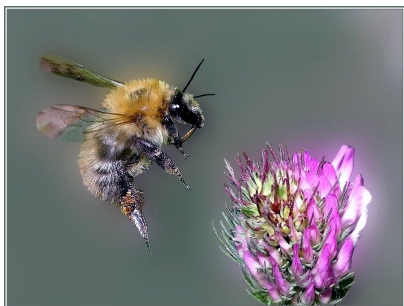
Compositions and arrangements from all eras, in all styles or musical genres and for any instrument or vocal training.

Qualification: PhD Musicology

Associate: SACEM - IPI code of the artist : 342990

Artist page : <https://www.free-scores.com/Download-PDF-Sheet-Music-bernard-dewagtere.htm>

About the piece



Title: Flight of the Bumblebee

Composer: Rimsky-Korsakov, Nikolai

Arranger: Dewagtere, Bernard

Copyright: Copyright © Dewagtere, Bernard

Instrumentation: Accordeon, piano and/or organ

Style: Romantic

Comment: "Flight of the Bumblebee" is an orchestral interlude written by Nikolai Rimsky-Korsakov for his opera ?The Tale of Tsar Saltan?, composed in 1899?1900. The piece closes Act III, Tableau 1, during which the magic Swan-Bird changes Prince Gvidon Saltanovich (the Tsar's son) into an insect so that he can fly away to visit his father (who does not know that he is alive).

Bernard Dewagtere on [free-scores.com](https://www.free-scores.com)

LICENSE

This sheet music requires an authorization
- for public performances
- for use by teachers

Buy this license at :

<https://www.free-scores.com/licence-partition-uk.php?partition=40098>



- listen to the audio
- share your interpretation
- comment
- pay the licence
- contact the artist

Prohibited distribution on other website.

Le vol du bourdon

Flight of the Bumblebee

Nikolai Rimsky-Korsakov (1900)

Transc. : Bernard Dewagtere

Vivace

Accordeon

Piano

Musical score for Accordeon and Piano, measures 1-4. The Accordeon part features a melodic line with dynamics *sf*, *mf*, and *dim.* The Piano part provides harmonic support with chords and single notes.

Pno

Musical score for Piano, measures 5-8. The right hand has a melodic line with dynamics *p* and *mf*. The left hand has a bass line with chords and single notes.

Pno

Musical score for Piano, measures 9-12. The right hand has a melodic line with a slur. The left hand has a bass line with chords and single notes.

Le vol du bourdon

2
13

Piano score for measures 13-16. The right hand features a melodic line with a slur over measures 13-14 and another slur over measures 15-16. The left hand provides harmonic support with chords and single notes.

17

Piano score for measures 17-20. The right hand continues the melodic line with slurs over measures 17-18 and 19-20. The left hand accompaniment consists of chords and moving lines.

21

Piano score for measures 21-24. The right hand has a melodic line with a slur over measures 21-22 and a fermata over measure 23. The left hand features a prominent bass line with a *p* dynamic marking and a crescendo hairpin over measures 23-24.

25

Piano score for measures 25-28. The right hand has a melodic line with a slur over measures 25-26 and a fermata over measure 27. The left hand features a complex bass line with a *mp* dynamic marking and a crescendo hairpin over measures 27-28.

Le vol du bourdon

29

Piano score for measures 29-32. The treble clef contains a melodic line with quarter notes, half notes, and quarter notes with accents. The bass clef features a complex eighth-note pattern in the first two measures, followed by quarter notes and a half note. A piano (*p*) dynamic is indicated in the third measure. Accents are placed over several notes in the treble clef.

33

Piano score for measures 33-36. The treble clef continues the melodic line with quarter notes, half notes, and quarter notes. The bass clef maintains the eighth-note pattern in the first two measures, then transitions to quarter notes and half notes. A slur is present over the last two measures of the bass line.

37

Piano score for measures 37-40. The treble clef features quarter notes, half notes, and quarter notes with accents. The bass clef has eighth-note patterns in the first two measures, followed by quarter notes and half notes. A slur is present over the last two measures of the bass line.

41

Piano score for measures 41-44. The treble clef contains a continuous eighth-note pattern. The bass clef features quarter notes, half notes, and quarter notes. A slur is present over the first two measures of the treble line.

Le vol du bourdon

4
45

Pno

49

Pno

mf

pp

mf

53

Pno

57

Pno

p

cresc.

mf

Le vol du bourdon

61

Pno

65

Pno

69

Pno

73

Pno

cresc. *f*

cresc. *f*

Le vol du bourdon

6
77

Pno

mf

81

Pno

85

Pno

89

Pno

f *dim. poco a poco*

Le vol du bourdon

93

Pno

97

Pno

101

Pno