



# MAURIZIO MACHELLA

Arranger, Interpreter, Publisher

Italia

## About the artist

Famous musician and organist, known throughout the world.

Italian publisher, researcher and organist.

The I.net Greatest Organ Music Resource in the World.

The most complete private library of music scores for organ and harpsichord.

Published rare scores of organ and harpsichord music with Armelin Musica of Padova ([www.armelin.it](http://www.armelin.it)) and

with the sheet music world center: "Free-scores.com". A part of my bibliography found in:

<http://www.bam-portal.de/search.html?action=search&q=person%3A%22Machella+Maurizio%22&sort=relevance&submit>

More than 2 million downloads!

Remember ... all this work, if you can, make me an offer on Paypal.

Thanks!

**Qualification:** Organist

**Artist page :** [www.free-scores.com/Download-PDF-Sheet-Music-gjordaniello.htm](http://www.free-scores.com/Download-PDF-Sheet-Music-gjordaniello.htm)

## About the piece



**Title:** Elégie. Transcribed for Concert Organ solo. [from Op.5 for Pianoforte]

**Composer:** Rebikov, Vladimir

**Arranger:** MACHELLA, MAURIZIO

**Licence:** © 2014 by Maurizio Machella's arrangements are protected by the Author Right. In case of concert performances, recordings, radio, TV, or internet broadcasting to declare arrangement.

**Publisher:** MACHELLA, MAURIZIO

**Style:** Romantic

MAURIZIO MACHELLA on [free-scores.com](http://free-scores.com)



- listen to the audio
- share your interpretation
- comment
- contact the artist

# Élégie

from Op.5 for Pianoforte

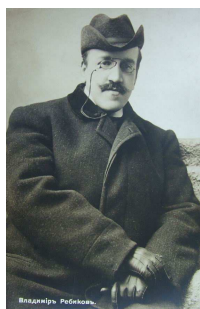
Trascrizione da Concerto per Grande Organo

a cura di

Maurizio Machella

Vladimir Rebikoff

1866-1920



**Lento**

Sw. *p*

Ped.

Musical score for the first system, measures 1-3. It features a grand staff with treble and bass clefs. The tempo is marked 'Lento'. The first staff has a 'Sw.' (Swell) marking and a dynamic of '*p*'. The second staff has a 'Ped.' (Pedal) marking. The key signature is three flats and the time signature is 4/4.

4

Gt.

Sw.

Sw.

Musical score for the second system, measures 4-7. It features a grand staff with treble and bass clefs. The tempo remains 'Lento'. The first staff has a 'Gt.' (Great) marking. The second staff has a 'Sw.' (Swell) marking. The third staff has a 'Sw.' (Swell) marking. The key signature is three flats and the time signature is 4/4.

**Più mosso**

8

Sw.

rit.

Gt.

Musical score for the third system, measures 8-11. The tempo is marked 'Più mosso'. It features a grand staff with treble and bass clefs. The first staff has a 'Sw.' (Swell) marking. The second staff has a 'rit.' (ritardando) marking. The third staff has a 'Gt.' (Great) marking. The key signature is three flats and the time signature is 4/4.

13 Sw. *cresc.* Gt. Ch.

18 *rit.* *p* Sw. *Tempo Primo* Gt. Sw.

23 Gt. *cresc.* *mf* *mp* Gt. to Ped.

28 Gt. *p* Sw. *molto rall.* *espressivo* Sw.