



Bernard Dewagtere

France, SIN LE NOBLE

Minuet in C (KV6) Mozart, Wolfgang Amadeus

About the artist

Doctor in musicology, conductor and composer.

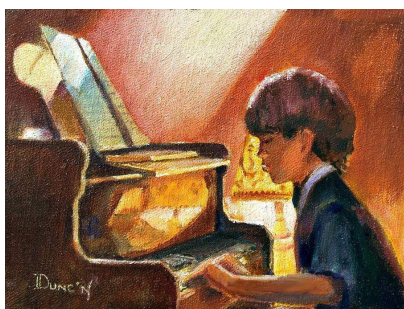
Compositions and arrangements from all eras, in all styles or musical genres and for any instrument or vocal training.

Qualification: PhD Musicology

Associate: SACEM - IPI code of the artist : 342990

Artist page : <https://www.free-scores.com/Download-PDF-Sheet-Music-bernard-dewagtere.htm>

About the piece



Title:	Minuet in C [KV6]
Composer:	Mozart, Wolfgang Amadeus
Arranger:	Dewagtere, Bernard
Copyright:	Copyright © Bernard Dewagtere
Publisher:	Dewagtere, Bernard
Instrumentation:	Harp
Style:	Classical

Bernard Dewagtere on [free-scores.com](https://www.free-scores.com)

LICENSE

This sheet music requires an authorization
- for public performances
- for use by teachers

Buy this license at :

<https://www.free-scores.com//license?p=a6F9JcesnY>

- listen to the audio
- share your interpretation
- comment
- pay the licence
- contact the artist

Prohibited distribution on other website.

Minuet in C KV6

W. A. Mozart (1756 – 1791)

Transc. : Bernard Dewagtere

Harp

The first system of the Minuet in C KV6, measures 1-4. The music is in C major and 3/4 time. The treble clef part begins with a quarter note C4, followed by eighth notes D4-E4, F4-G4, and A4-B4. The bass clef part begins with a quarter rest, followed by eighth notes C3-D3, E3-F3, and G3-A3. The key signature has one sharp (F#) and the time signature is 3/4.

5

The second system of the Minuet in C KV6, measures 5-8. The treble clef part continues with eighth notes B4-A4, G4-F#4, E4-D4, and C4-B4. The bass clef part continues with eighth notes B2-A2, G2-F#2, E2-D2, and C2-B2. The key signature has one sharp (F#) and the time signature is 3/4.

9

The third system of the Minuet in C KV6, measures 9-12. The treble clef part begins with a quarter note C4, followed by eighth notes D4-E4, F4-G4, and A4-B4. The bass clef part begins with a quarter note C3, followed by eighth notes D3-E3, F3-G3, and A3-B3. The key signature has one sharp (F#) and the time signature is 3/4.

13

The fourth system of the Minuet in C KV6, measures 13-16. The treble clef part begins with a quarter note C4, followed by eighth notes D4-E4, F4-G4, and A4-B4. The bass clef part begins with a quarter note C3, followed by eighth notes D3-E3, F3-G3, and A3-B3. The key signature has one sharp (F#) and the time signature is 3/4.