

Gigue

Suite no. 1, Mvmt. 6

Johann Mattheson

Measures 1-5 of the Gigue. The piece is in 6/8 time and D major. The right hand features a melodic line with eighth and sixteenth notes, while the left hand provides a harmonic accompaniment with chords and single notes.

Measures 6-10 of the Gigue. The right hand continues the melodic development with various rhythmic patterns, and the left hand maintains the accompaniment.

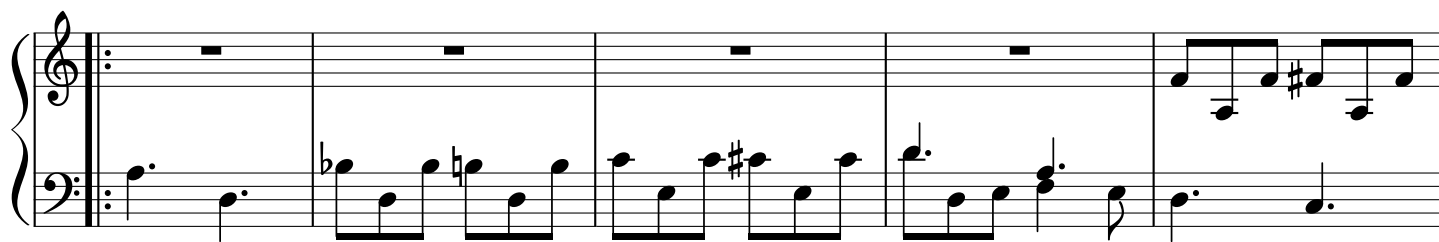
Measures 11-15 of the Gigue. The right hand shows more complex rhythmic figures, including triplets and slurs. The left hand continues with a steady accompaniment.

Measures 16-20 of the Gigue. The right hand features a series of slurs and ties, creating a flowing melodic line. The left hand continues with a consistent accompaniment.

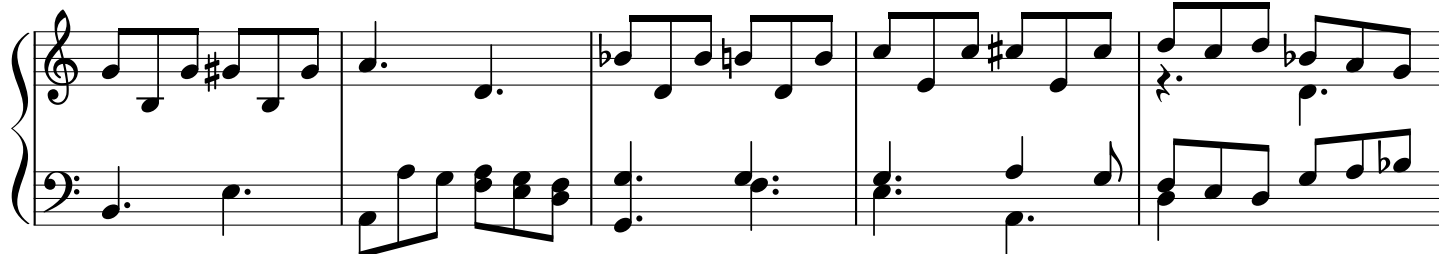
Measures 21-25 of the Gigue. The right hand continues with a melodic line that includes some chromaticism. The left hand provides a steady accompaniment.

Measures 26-30 of the Gigue. The piece concludes with a final cadence in the right hand and a sustained accompaniment in the left hand.

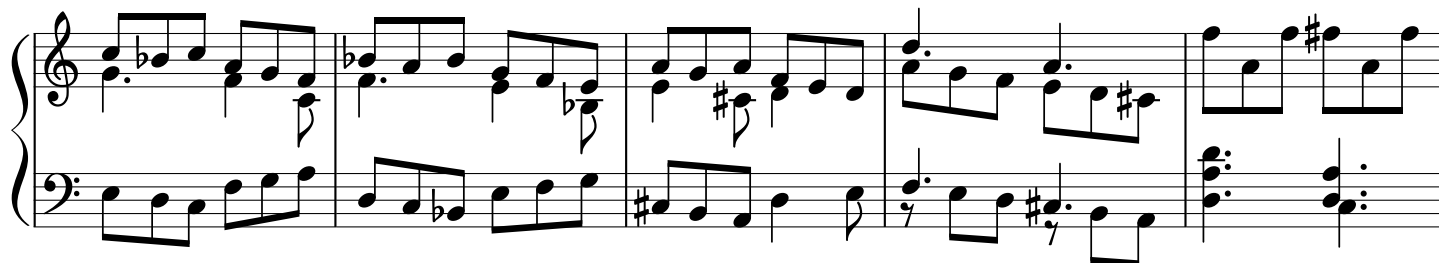
30



35



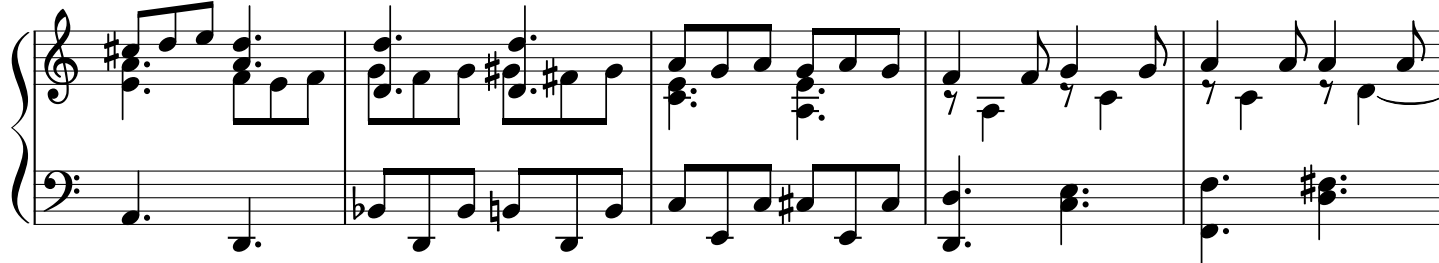
40



45



50



55

