



Nelly LiPuma

Italia, Vienna

Sonate für Bratsche und Klavier

About the artist

She studied piano at the Conservatorio Vincenzo Bellini in Catania with Prof. Agata Catania, a pupil of Carlo Zecchi, and she got her diploma in Piano with excellence. She played concerts throughout Italy. After her Diploma she went to Germany and worked as pianist accompanist at the Musikhochschule in Cologne. During 1997-1999 she studied composition and orchestral conducting at the Universität für Musik und darstellende Kunst in Vienna. Her first concerts as pianist and composer in Vienna were so successful that she was soon asked by many musicians to write music for them. So many of her works were composed like the Gundulas duets 6 duets for 2 Flutes, her Trios for flute, viola and guitar that were performed in Slovakia in 1996 and broadcasted in radio. Many of Nelly LiPuma's pieces were written and performed in Vienna, such as the Wiener Quintett dedicated to the city of Vienna. In June 2000 she produced her CD some works of mine with artists from the Universität für Mu... (more online)

Associate: AKM

Artist page : <https://www.free-scores.com/Download-PDF-Sheet-Music-musicanuova.htm>

About the piece



Title: Sonate für Bratsche und Klavier

Composer: LiPuma, Nelly

Arranger: LiPuma, Nelly

Copyright: Copyright © Nelly LiPuma

Publisher: LiPuma, Nelly

Instrumentation: Viola and Piano (or organ)

Style: Contemporary

Comment: This work was written for the friend and colleague Jacqueline Kopacinsky. The premiere took place in Vienna in the 2022. Here I present only the 1.st movement.

Nelly LiPuma on [free-scores.com](https://www.free-scores.com)

LICENSE

This sheet music requires an authorization
- for public performances
- for use by teachers

Buy this license at :

<https://www.free-scores.com/license?p=aejbN11V9Q>



- listen to the audio
- share your interpretation
- comment
- pay the licence
- contact the artist

Nelly LiPuma

Sonate
für
Bratsche und Klavier

www.nellylipuma.com

Questa Sonata per Viola e pianoforte é stata scritta per la stimatissima collega e amica Jacqueline Kopacinsky ed é a lei dedicata.
La Sonata ha avuto la sua premiere in Vienna nel 2022 con Jacqueline Kopacinsky, Viola e Gregor Urban, Pianoforte.

Diese Sonate für Bratsche und Klavier wurde für meine geschätzte Kollegin und Freundin Jacqueline Kopacinsky geschrieben und ist ihr gewidmet.

Die Sonate wurde 2022 in Wien mit Jacqueline Kopacinsky, Bratsche und Gregor Urban, Klavier, uraufgeführt.

Esta Sonata para viola y piano fue escrita para mi estimada colega y amiga Jacqueline Kopacinsky y está dedicada a ella.

La Sonata se estrenó en Viena en 2022 con Jacqueline Kopacinsky, viola y Gregor Urban, piano.

This Sonata for Viola and piano was written for the highly esteemed colleague and friend Jacqueline Kopacinsky and is dedicated to her.

The Sonata had its premiere in Vienna in 2022 with Jacqueline Kopacinsky, Viola and Gregor Urban, Piano.

Sonate für Bratsche und Klavier

Nelly LiPuma

Largo

Viola

abbastanza forte da abbracciare
con il suono l'auditorio!

Pianoforte

il tutto deve creare un'atmosfera ipnotica.
Buio e lento come se ci si muovesse nelle viscere
di una caverna sotterranea.

*più rapido
(libero)*

ped. *ped.*

6

Vla.

più p

Pf.

più p
libero (il valore delle note è solo un "suggerimento" ritmico)

** ped. ped. ped.*

11

Vla.

Pf.

** ped. ped.*

15

Vla.

Pf.

gub

18 **Andante**

Vla.

Pf.

mf

21

Vla.

Pf.

24 *poco rit.*

Vla.

Pf.

a tempo

poco rit.

a tempo

Sonate für Bratsche und Klavier

27

Vla. *4*

Pf.

30

Vla.

Pf.

f

f pieno e sonoro

Red.

33

Vla.

Pf.

f

f

*

36

Vla.

Pf.

sf

2

Sonate für Bratsche und Klavier

39

Vla.

Pf.

41

Vla.

Pf.

cresc.

f

8va

43

Vla.

Pf.

marcatissimo

f

con molta forza

45

Vla.

Pf.

sfz

p

47

Vla. *mp*

Pf. *mp*

ped. *

49

Vla. *f*

Pf. *f*

8vb

52

Vla. *sfz* *dim.* *p*

Pf. *dim.*

(8vb)

56

Vla.

Pf.

pp

p

(8vb)

59

Vla.

Pf.

(8vb)

62

Vla.

Pf.

(8vb)

Vla. 65

Pf. 65

molto stretto l'arpeggio!

Vla. 68

Pf. 68

f

Vla. 72

Pf. 72

76

Vla.

Pf.

79

Vla.

Pf.

82

Vla.

Pf.

85

Vla. 

Pf. 


88

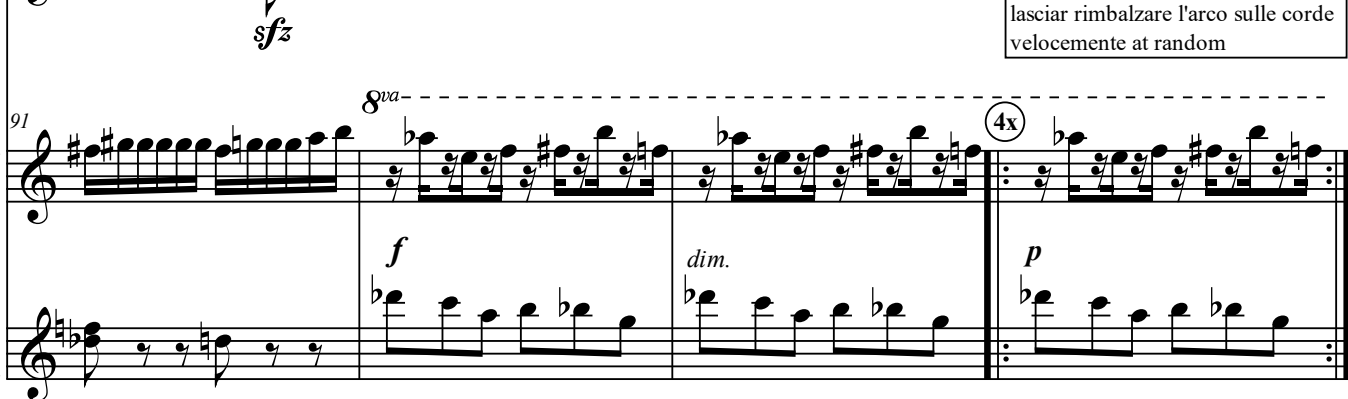
Vla. 

Pf. 

mf

91

Vla. 

Pf. 

sfz

f

dim.

p

la 2.x col legno battuto
tenendo tutte le corde premute!

lasciar rimbalzare l'arco sulle corde
velocemente at random

4x

4x

95 *col legno tratto* *Glissando* (4x) *pizz.*

Vla.

Pf.

8va

4 x

sempre più cresc.

99

Vla.

Pf.

8va

8va

8va

descresc.

102

Vla.

Pf.

105 *arco* *mp* *p*

108

111 *pp* *p* *pp* *p*

114

Vla.

Pf.

117

Vla.

Pf.

120

Vla.

Pf.

122

Vla.

Pf.

125

Vla.

Pf.

129

Vla.

Pf.

131

Vla. *f*

Pf. *f*

134

Vla. *ff*

Pf. *ff*

8va

7 7 7 7

7 5 5

136

Vla.

Pf.

8va

7

13 13

137

Vla.

Pf.

15

15

8va

8va

139

Vla.

Pf.

16

sehr breit

sehr breit

8va

p

con molta forza

sfz

* 8vb

142

Vla.

Pf.

142

p

cresc.

mf

sfz

(8vb)

145

Vla.

Pf.

f

rall.

148

Vla.

Pf.

Lento

150

Vla.

Pf.

f

ffz

8va

8vb

Sonate für Bratsche und Klavier

II. Satz

Nelly LiPuma

Allegro

Viola

mf

Pianoforte

mf

Vla.

f

Pf.

f

Vla.

ff

Pf.

ff

Violasonate - II. Satz

2

Vla. 14

Pf. 14

Vla. 18

Pf. 18

Vla. 21

Pf. 21

Vla. 24

Pf. 24

Vla. *sfz*

Pf.

Vla. *f* *più f* *mf*

Pf. *f* *più f* *mf* *sfz*

Vla. *cresc.* *f*

Pf. *cresc.* *f*

Vla. *f* *p* *f*

Pf. *f* *p* *f*

45

Vla.

45

Pf.

f p cresc.

sfz

Detailed description: This system contains measures 45 to 48. The Violin part (Vla.) starts with a treble clef and a 5/16 time signature. It features a series of sixteenth-note runs. At measure 47, the time signature changes to 9/16, and at measure 48, it changes to 3/4. The dynamics are marked *f p cresc.* with a hairpin. The Piano part (Pf.) is in grand staff. It begins with a treble clef and a 5/16 time signature. It contains chords and some melodic fragments. At measure 48, the time signature changes to 3/4. The dynamics include *sfz* and *f*.

49

Vla.

49

Pf.

f

Detailed description: This system contains measures 49 and 50. The Violin part (Vla.) starts with a treble clef and a 5/16 time signature. It features a melodic line with a fermata. At measure 50, the time signature changes to 3/4. The dynamics are marked *f*. The Piano part (Pf.) is in grand staff. It features a long, sustained chord in the bass register, with a fermata. At measure 50, the time signature changes to 3/4. The dynamics are marked *f*.

51

Vla.

51

Pf.

sfz

sva-

Ped.

Detailed description: This system contains measures 51 and 52. The Violin part (Vla.) starts with a treble clef and a 3/4 time signature. It features a melodic line with a fermata. The dynamics are marked *sfz*. The Piano part (Pf.) is in grand staff. It features a complex rhythmic pattern in the right hand and a simpler pattern in the left hand. At measure 52, the time signature changes to 3/4. The dynamics are marked *sfz*. There are *Ped.* markings at the beginning and end of the system. The word *sva-* is written above the piano part.

53

Vla.

Pf.

55

Vla.

Pf.

Leg.

57

Vla.

Pf.

Leg.

Leg.

Vla. *mp* *dim.*

Pf.

59

Vla. *pp*

Pf. *ppp* *p*

solo il do# in evidenza,
il resto molto leggero.

61

Vla.

Pf.

64

Vla. *cresc.*

Pf. *cresc.*

67

69

Vla. *cresc. molto* *f*

Pf. *cresc. molto* *f molto*

Red.

71

Vla.

Pf. 13

10

72

Vla. *f* *mf*

Pf. *f* *mf*

76

Vla.

Pf.

f *mf*

80

Vla.

Pf.

mf *mf*

Ped. *

84

Vla.

Pf.

p

* Ped. *

88 *Vla.* *Pf.* *sempre più cresc.*

92 *Vla.* *Pf.* *Red.*

95 *Vla.* *Pf.* *f* *sfz* *Red.*

98 *Vla.* *Pf.* *ff* *sul ponticello molto metallico*

Detailed description: This page of a musical score for Violin and Piano, measures 88-98. The score is arranged in four systems. Each system contains a Violin (Vla.) staff and a Piano (Pf.) grand staff (treble and bass clefs). The key signature is one sharp (F#) and the time signature is 6/16. The first system (measures 88-91) features a 'sempre più cresc.' instruction. The second system (measures 92-94) includes 'Red.' markings. The third system (measures 95-97) shows a change in meter to 3/4 and includes dynamic markings 'f' and 'sfz'. The fourth system (measures 98) features a 'sul ponticello molto metallico' instruction for the violin and a 'ff' dynamic for the piano. The score includes various musical notations such as slurs, accents, and dynamic markings.

101 *sfz* scivolare con l'arco sul ponticello per produrre un suono "sordo"

Vla. *ff* con molta forza *dim. fino a sparire in* *ppp*

Pf. *grattare con la m.s. l'arpa del pf nel registro basso, da sinistra verso destra e dopo, con la m.d., l'arpa con 3 c. avanti e indietro.* *quando si é creata una nube sonora, lasciar vibrare le corde e cominciare a suonare con la m.s., molto confuso ma ritmico.*

105

Vla.

Pf. *p*

108

Vla.

Pf.

111

Vla.

Pf.

115

Vla.

Pf.

120

Vla.

Pf.

Vla. 125

Pf. 125

le doppie sbarre indicano la fine del ciclo B

Vla. 129

Pf. 129

Vla. 134

Pf. 134

137 *Glissando* *Glissando*

Vla.

137

Pf. *f* la sinistra sempre mormorata

140 *sfz* *fp* poco a poco cresc.

Vla.

140 *indistinto* *p*

Pf.

143

Vla.

143

Pf.

146

Vla.

Pf.

150

Vla.

Pf.

153

Vla.

Pf.

Glissando

Glissando

156

Vla. *Glissando* *Glissando* *tr*

Pf.

159

Vla. *Glissando* *Glissando*

Pf. *allmählich cresc.*

163

Vla.

Pf.

167

Vla.

Pf.

171

Vla.

Pf.

f marcatisimo

f molto

8vb

173

Vla.

Pf.

ffz

8vb

177 *langsam beginnen und allmählich schneller werden*

Vla. *pp*

Pf. *langsam beginnen und allmählich schneller werden* *dim.* *p*

182 **Veloce**

Vla. *p*

Pf.

190

Vla.

Pf.

Vla. 197 *mf*

Pf. 197

Vla. 202 *mf*

Pf. 202

Vla. 210 *sfz* *Gliss.* *pizz.*

Pf. 210

215 *arco*

Vla.

Pf.

220

Vla.

Pf.

226

Vla.

Pf.

231

Vla.

Pf.

Detailed description: This system covers measures 231 to 235. The Violin (Vla.) part is in the bass clef and features a continuous eighth-note pattern with accents (>) on measures 231, 233, and 235. The Piano (Pf.) part consists of two staves. The right hand plays a sequence of eighth notes with accents (>) and flats (b) on measures 231, 233, and 235. The left hand plays a simple bass line with a few notes on measures 231, 233, and 235.

236

Vla.

Pf.

Detailed description: This system covers measures 236 to 240. The Violin (Vla.) part continues with the eighth-note pattern, including a fermata on the final note of measure 239. The Piano (Pf.) part continues with the eighth-note accompaniment in the right hand and the bass line in the left hand, with accents (>) and flats (b) on measures 236, 238, and 240.

240

Vla.

Pf.

Detailed description: This system covers measures 240 to 244. The Violin (Vla.) part continues with the eighth-note pattern, including a fermata on the final note of measure 243. The Piano (Pf.) part continues with the eighth-note accompaniment, with accents (>) and flats (b) on measures 240, 242, and 244.

244

Vla.

Pf.

248

Vla.

Pf.

253

Vla.

Pf.

257 *die pizz. Noten (von T.257 bis 264) rhythmisch at random spielen.*

Vla.

Pf.

261

Vla.

Pf.

265 *da qua: ritmicamente preciso.*

Vla.

Pf.

269

Vla.

Pf.

273

Vla.

Pf.

277

Vla.

Pf.

sempre piú cresc.

281

Vla.

Pf.

285

Vla.

Pf.

sempre piú cresc.

289

Vla.

Pf.

293

Vla. *ff*

Pf. *ff*

297

Vla. *ff*

Pf. *ff sempre*

301

Vla.

Pf.

305

Vla.

Pf.

Detailed description: This system covers measures 305 to 308. The Violin part (Vla.) features a melodic line with a flat key signature. It includes two four-measure phrases marked with a '4' and a five-measure phrase marked with a '5'. The Piano part (Pf.) consists of a rhythmic accompaniment of eighth notes with accents (>) and slurs, alternating between the upper and lower staves. The lower staff shows a simple bass line with rests.

309 *pizz.*

Vla.

Pf.

Detailed description: This system covers measures 309 to 312. The Violin part (Vla.) is marked *pizz.* (pizzicato) and features a series of dotted eighth notes with accents (>) and slurs, starting with a *ff* dynamic. The Piano part (Pf.) continues with the eighth-note accompaniment from the previous system, with accents and slurs. The lower staff shows a simple bass line with rests.

313

Vla.

Pf.

Detailed description: This system covers measures 313 to 316. The Violin part (Vla.) continues with the dotted eighth-note pattern from the previous system, marked with accents and slurs. The Piano part (Pf.) continues with the eighth-note accompaniment, including accents and slurs. The lower staff shows a simple bass line with rests.

317

Vla.

Pf.

322

Vla.

Pf.

dim.

326

Vla.

Pf.

p

bloccare, pian piano, la vibrazione delle corde
in modo da produrre un rumore.

329 *arco*

Vla.

dim. pian piano fino al niente

Pf.

dim. gradualmente

333

Vla.

Pf.

338

Vla.

Pf.

pp

342

Vla.

Pf.

Vla. 346

Pf. 346

This system covers measures 346 to 351. The Viola part (top staff) features a melodic line with a long slur over measures 347-348. The Piano part (bottom two staves) consists of a steady eighth-note accompaniment in the right hand and a simple bass line in the left hand.

Vla. 352

Pf. 352

This system covers measures 352 to 357. The Viola part (top staff) continues with a melodic line and a long slur over measures 353-354. The Piano part (bottom two staves) maintains the eighth-note accompaniment and bass line.

Vla. 358

Pf. 358

This system covers measures 358 to 363. The Viola part (top staff) has a melodic line with a long slur over measures 359-360, followed by a fermata and a final chord. The Piano part (bottom two staves) continues with the eighth-note accompaniment and bass line.

362 *naturale, a poco a poco sul ponticello*

Vla.

a poco a poco sempre più legato

Pf.

cambiare mano e alzarsi per poter dämpfen con la m.d. le corde all'interno, quando indicato dal segno.

366 *legato*

Vla.

p *p*

da questo momento in poi le corde sono gedämpft.

Pf.

375 *ascoltare il pizz. del pf.!*

Vla.

cresc. *f cresc.*

Pf.

1.= da un momento x cominciare a pizz. la corda del fa, ritmicamente ad intervalli regolari.

ped. *ped.* *ped.* *ped.*

Vla. 383 *sempre più cresc.* *sempre più cresc.*

Pf. 383

arpeggiare sulle corde da sin. verso destra.
 Dapprima p, poi sempre più f fino a creare
 una nuvola di suono da lasciar vibrare nell'aria,
 dunque risidersi, mantenendo il ped. destro abbassato.
 Mantenere contatto con la viola,
 quando si é pronti dare un cenno e continuare.

Vla. 387 *ff sempre meno legato* *fff*
frei und marcatissimo

Pf. 387

Vla. 392 *Glissando* *poco rit.*

Pf. 392

394 **Tempo I**

Vla. *a tempo* *f*

Pf. *f*

Vla.

Pf. *Leg.*

Vla. *f*

Pf. *f*

405

Vla.

Pf.

409

Vla.

Pf.

413

Vla.

Pf.

417

Vla.

Pf.

421

Vla.

Pf.

mf

sfz p

fp

425

Vla.

Pf.

mf

p

mf

p

8va

428

Vla. *mp* *cresc.*

Pf. *mp* *cresc.*

430

Vla. *f*

Pf. *f* *ff* *8^{vb}* *ped.*

marcatissimo il basso!

433

Vla. *sfz*

Pf. *ped.*

436

Vla. *pp* *p*

Pf. *legato* *pp* *cresc. gradualmente uscire dal buio*

440

Vla. *sempre p*

Pf.

444

Vla. *cresc.* *cresc. moltissimo* *f molto*

Pf. *cresc.* *cresc. moltissimo* *f molto*

449 **Veloce** ♩ = ♪

Vla. 

Pf. 

451 

Pf. 

454 **mf** 

Pf. **mf** 

458

Vla.

Pf.

462

Vla.

Pf.

466

Vla.

Pf.

accel.

cresc.

ff

ff 1.

marcatissimo il do#

1. = sib con la *m.s.* e si# con la *m.d.* non è un errore!
È voluta la coesistenza di due terze: magg. e min.!

Vla. 470

Pf. 470

Vla. 474 (solo) *declamato* *p* *libero* *Gliss.* *sfz*

Pf. 474

Vla. 478 *in tempo cresc.* *f*

Pf. 478 *in tempo cresc.*

481

Vla. *f* *cresc.*

Pf. *ff* *p* *m.s.*

8^{vb} if you play in a gran piano, then 8b!

482

Vla. *ff*

Pf. *f* *ff*

8^{va}

8^{vb}

Sonate für Bratsche und Klavier

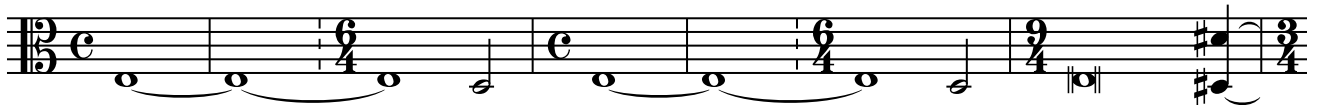
Nelly LiPuma

Largo



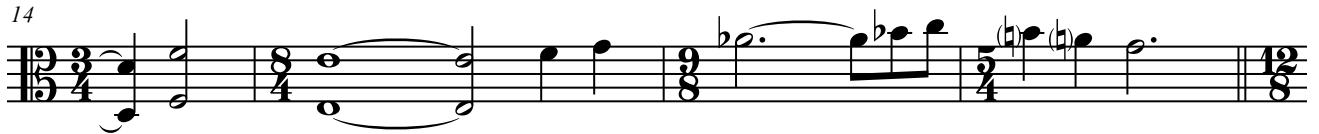
abbastanza forte da abbracciare
con il suono l'auditorio!

7



più p

14

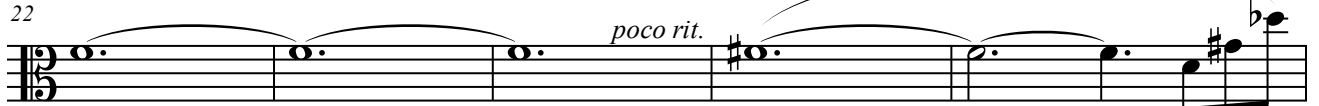


18 Andante



mf

22



a tempo

27



31



f

f

36



sf

40



cresc.

42



marcatissimo

44 *f* *sfz* *p*

47 *mp* *f*

52 *sfz* *dim.* *p* 2

58 *p*

63

66 *f*

70

73

76

79

84

Detailed description: This page of a musical score for Violin and Piano contains measures 44 through 84. The music is written in a single staff for the violin. The key signature has one sharp (F#), and the time signature changes frequently, including 6/8, 3/4, 7/4, 12/8, 3/8, 2/4, 3/4, 6/8, 9/8, and 3/4. The score features various dynamics such as *f* (forte), *sfz* (sforzando), *p* (piano), *mp* (mezzo-piano), and *dim.* (diminuendo). There are also accents (>) and slurs throughout. Measure 44 starts with a forte *f* dynamic and a sforzando *sfz* marking. Measure 47 has a mezzo-piano *mp* dynamic followed by a forte *f* dynamic. Measure 52 includes a sforzando *sfz*, a diminuendo *dim.*, and a piano *p* dynamic, with a fermata and a second ending bracket labeled '2'. Measure 58 is marked piano *p*. Measure 66 has a forte *f* dynamic. The score concludes with measure 84.

89 *mf* *sfz*

92 **2** **4x** la 2.x col legno battuto tenendo tutte le corde premute! col legno tratto *Glissando*

lasciar rimbalzare l'arco sulle corde velocemente at random

98 **4x** *pizz.* **3** *sempre più cresc.*

105 *arco* *mp* *p* *pp*

114 *p* **5**

124 *tr* *cresc.*

130 *f* *f*

133 *ff*

137 *sehr breit* *p*

144

148

151

Lento

Sonate für Bratsche und Klavier

II. Satz

Nelly LiPuma

Allegro

mf

6

f

11

14

18

22

26

31

34

piú f

mf

cresc.

38 38 *f* *f*

43 43 *p* *f*

47 47 *f* *p* *cresc.*

49 49 *f* *sfz*

54

57 57 *dim.* *sfz* *mp* *dim.* *pp*

67

68 68 *cresc.*

70 70 *f*

72 72 *f* *mf*

76

80 *mf*

83

86 *sempre più cresc.*

90

92

95 *f*

98 *sul ponticello molto metallico*

101 *sfz* *scivolare con l'arco sul ponticello per produrre un suono "sordo"* *ff con molta forza* *dim. fino a sparire in ppp*

108

115

121

128

137

Gliss. *Glissando* *sfz*
fp poco a poco cresc.

144

153

Glissando *Gliss.* *tr*
allmählich cresc.

164

171

f marcatisimo

174

langsam beginnen und allmählich schneller werden
sfz *pp*

180

Veloce
p

188

192

257 die pizz. Noten (von T.257 bis 264) rythmisch at random spielen.

pizz.

263 da qua: ritmicamente preciso.

273 sempre piú cresc.

285 sempre piú cresc.

ff

pizz.

ff

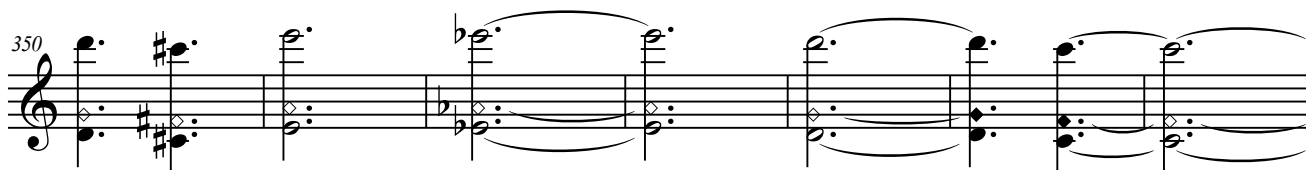
dim.


p

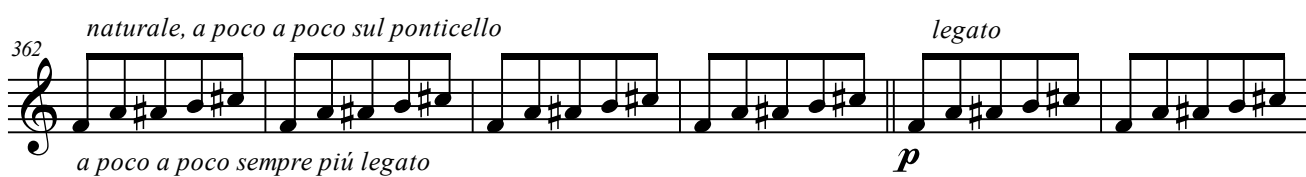
bloccare, pian piano, la vibrazione delle corde
in modo da produrre un rumore.

arco

338 

350 

357 

362 *naturale, a poco a poco sul ponticello* *legato*
a poco a poco sempre più legato *p*


368 *p*


374 *ascoltare il pizz. del pf!*
cresc. *f cresc.*


380 *sempre più cresc.*


385 *sempre più cresc.* *ff sempre meno legato*


390 *fff frei und marcatissimo* *Gliss.*


393 *Tempo I*
a tempo


395 *f*

400 *f*

407

410

414

418

423 *sfz p* *mf* *p*

428 *mp* *cresc.* *f*

432 *sfz*

436

pp *p* *sempre p*

441

444 *cresc.* *cresc. moltissimo*

448 *f* *molto*

450 **Veloce** $\text{♩} = \text{♪}$ *p*

452 *mf*

455

458

460 *cresc.*

468 *ff*

474 (solo)
declamato
Glissando
p libero

476
sfz

478
in tempo cresc.
f

481
f
cresc.

482
12 12 8

483
ff