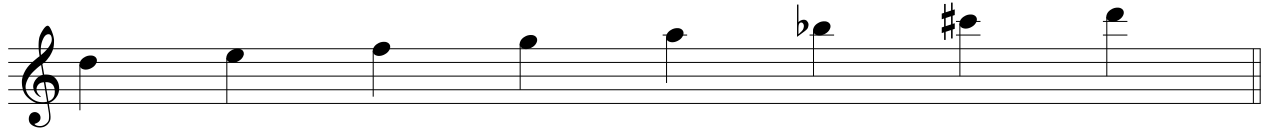


# Scale Study in a Minor key

Alastair Lewis

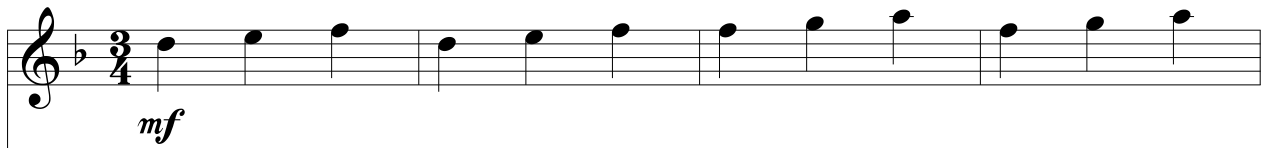
Learn this scale before learning the Scale Study :

## D harmonic minor scale

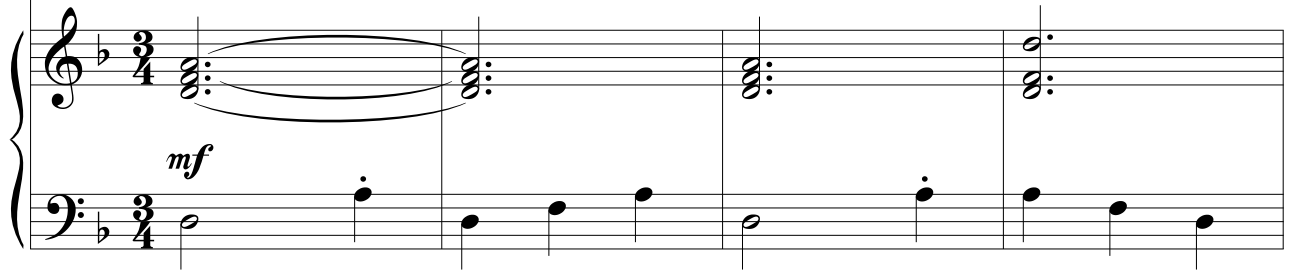


### Andante

Alto  
(treble)  
Recorder



Piano



The image shows two systems of musical notation. The first system consists of a single treble clef staff with a key signature of one flat (B-flat). It begins at measure 13, marked with a '13' above the staff. The notes are: G4, A4, B4, C5 (sharped), D5, E5, F5, G5, A5, B5, C6. The system ends with a double bar line and the marking 'D.C.'. The second system is a grand staff with a treble clef on top and a bass clef on the bottom. It also begins at measure 13, marked with a '13' above the treble staff. The treble staff contains chords: G4-B4, G4-B4-C5 (sharped), and G4-B4-C5 (sharped) tied across two measures. The bass staff contains notes: G3, A3, B3, C4, D4, E4, F4, G4, A4, B4, C5. The system ends with a double bar line and the marking 'D.C.'.

© 2012 Alastair Lewis  
<http://www.free-scores.com/Download-PDF-Sheet-Music-alastair-lewis.htm>