



Leonard Birch

Australia, Albany

Ode to Chopin (103)

About the artist

I Leonard Birch began Piano Accordion Lessons at the age of six, I then progressed to the Guitar, but as the years went by, I neglected my love for music, mainly the classics and returned thirty years later. And here I am back composing for a number of different instruments for my friends on free-scores.com to view. I hope to place one score in my site weekly, for either the Accordion, Cello, Clarinet, Classical Guitar, Saxophone, ect, ect.

My dear friend Len, has placed a number of mp3's on my site as well and his interpretation is excellent. I hope you will find the time to have a listen as well.

I would also appreciate comments regarding my scores as this is the only way I may learn and compose better works. I will value and answer all of your e-mails and comments.

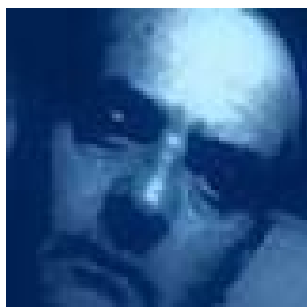
Thank you!

Leonard Birch

Qualification: 8th grade Piano Accordion, intermediate on Guitar and beginner of the Cello.

Artist page : <https://www.free-scores.com/Download-PDF-Sheet-Music-leonard-birch.htm>

About the piece



Title: Ode to Chopin [103]
Composer: Birch, Leonard
Arranger: Birch, Leonard
Copyright: Leonard Alfred Birch
Publisher: Birch, Leonard
Instrumentation: Piano solo
Style: Classical

Leonard Birch on [free-scores.com](https://www.free-scores.com)



This work is not Public Domain. You must contact the artist for any use outside the private area.



- listen to the audio
- share your interpretation
- comment
- contact the artist

ODE TO CHOPIN

Leonard Alfred Birch

Allegro (M.M. ♩ = c. 120)

Piano

f

4

8

11

mp

© 2014 by Leonard Alfred Birch. All rights reserved.

14 *rit.*

mf

18 *a tempo*

a tempo

23

ff

29

34

39

Measures 39-42: Treble clef, piano (p), forte (f) dynamic. The right hand features a complex, flowing melodic line with many sixteenth notes. The left hand provides a steady accompaniment with chords and single notes.

43

Measures 43-46: Treble clef, piano (p), forte (f) dynamic. Similar to the previous system, the right hand has a busy melodic line. The left hand includes triplets in the final measure.

47

Measures 47-52: Treble clef. The right hand has a more rhythmic, dotted-note melody. The left hand continues with a steady accompaniment of chords and single notes.

53

Measures 53-58: Treble clef. The right hand begins with a melodic phrase and then moves to a more rhythmic accompaniment. The left hand continues with a steady accompaniment.

59

Measures 59-62: Treble clef. The right hand features a melodic line with a fermata on the final note. The left hand has a steady accompaniment with a fermata on the final note.