



# LEONARD ANDERSON

Arranger, Composer, Director, Interpreter, Teacher

United States (USA), NORWALK

## About the artist

Leonard Anderson is a retired American educator and musician. Born in 1947 in Pennsylvania, USA, he moved to California and grew up near Los Angeles. He earned his BA in Music Education at UCLA and studied with clarinetist, Gary Grey. Anderson performed in several Southern California orchestras and jazz groups. He taught high school music from 1970 to 1980, and then took school administrative positions until his retirement in 2000. Anderson earned his MA, Ph.D and Ed.D degrees. After retirement he resumed his music interests and formed his own jazz groups. He performed on numerous cruise ships with highlights being on the QEII and Queen Victoria doing two world cruises. Anderson was married in 1970 to his wife Debbie and they have two daughters and five Grandchildren. He currently resides in Ohio, his wife's birthplace, and performs and directs local ensembles. Anderson enjoys recording the music found on FREE-SCORES and additionally as recorded over 1000 pieces for flut... (more online)

**Artist page :** <http://www.free-scores.com/Download-PDF-Sheet-Music-Igdsanderson.htm>

## About the piece



**Title:** Hold On  
**Composer:** LEONARD ANDERSON  
**Arranger:** LEONARD ANDERSON  
**Copyright:** Copyright © ANDERSON LEONARD  
**Publisher:** LEONARD ANDERSON  
**Style:** Music Halls  
**Comment:** Hold On posted by SERGEY BRAZHNIK.....<https://www.youtube.com/watch?v=GKmCUfAAc1k>

LEONARD ANDERSON on [free-scores.com](http://free-scores.com)



This work is not Public Domain. You must contact the artist for any use outside the private area.



- listen to the audio
- share your interpretation
- comment
- contact the artist

# Hold On Carlos Santana

tr. Brazhnik Sergey 24/08/2018

Saxophone Bb  
tempo c. 126

A-7

G

F

B<sup>b</sup>-7

E7



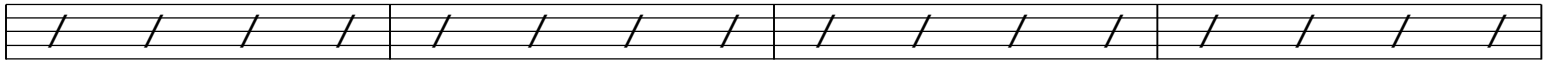
A-

G

F

B-7

E7



A-

G

F

B-7

E7



A-7

G

F

B-7

E7



A-

G

F

C

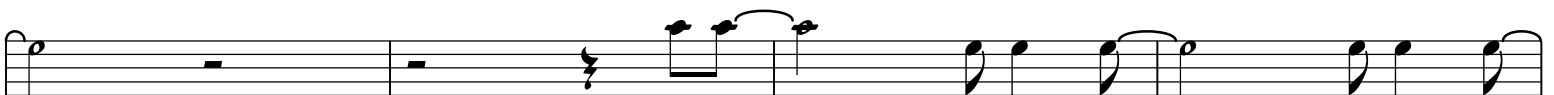


E<sup>sus</sup>

E7

A-

G



F

B-7

E7

A-

G



F

B-7

E7

A-

G



F

C

E<sup>sus</sup>

E





E/G# A- C/G F C

E-7 G- C F G

E/G# A- C/G F C#9

E-7 E7 A- A#sus

A- A7sus A- A7sus

A- A-7 A- A7sus

A- A-7 A- A7sus

A- G-7 C#9 F G

E/G# A- C/G F C#9

E-7 G- F G

E/G# A- Gsus F C#9

E-7 G- C F G

E/G# A- C/G F C

E-7 G- F G

E/G# E A- C/G F C#9

E-7 E7 A-7 A-9