



Tony Wilkinson

United Kingdom, Wroxham

Bink's Waltz

Artist page : <https://www.free-scores.com/Download-PDF-Sheet-Music-tonywilkinson.htm>

About the piece



Title: Bink's Waltz
Composer: Joplin, Scott
Copyright: Creative Commons Licence 3.0
Publisher: Wilkinson, Tony
Instrumentation: Piano solo
Style: Early 20th century
Comment: Typeset score.

Tony Wilkinson on [free-scores.com](https://www.free-scores.com)



- listen to the audio
- share your interpretation
- comment
- contact the artist

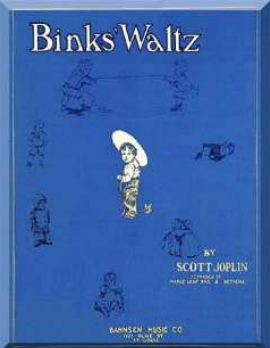
Piano Solo.

Scott Joplin

1867 - 1917



Bink's Waltz



Bink's Waltz

Scott Joplin
1905

Andante ♩ = 144

Piano *mp*

6

Ped. * *Ped.* * *rit. poco*

12

a tempo

a poco *mp* *rit.* *a tempo*

Ped. * *Ped.* * *Ped.* * *Ped.* *

18

mf *rit.* *mp* *a tempo*

Ped. * *Ped.* *

24 *a tempo*
rit. *mp* *leggiero*
Ped. * Ped. * Ped. * Ped. *

30 *f*
Ped. * Ped. * Ped. * Ped. *

37 *con fuoco* *mf*
Ped. * Ped. * Ped. * Ped. *

43 *con fuoco*
Ped. * Ped. * Ped. * Ped. *

49 *mp* *con fuoco* *mp*
Ped. * Ped. * Ped. * Ped. *

56

mp

Ped. *

Ped. *

This system contains measures 56 through 61. The music is in a minor key. The right hand features a melodic line with eighth-note patterns and some slurs. The left hand provides harmonic support with chords and moving lines. Pedal points are indicated by 'Ped.' and asterisks at the end of measures 57 and 59.

62

a tempo

rit. poco a poco mp rit.

Ped. *

Ped. *

This system contains measures 62 through 67. It begins with a 'rit. poco a poco' marking, followed by 'a tempo' and 'mp'. The right hand has a melodic line with slurs. The left hand has a steady accompaniment. Pedal points are marked at the end of measures 65 and 67.

68

a tempo

mf rit. mp

Ped. *

This system contains measures 68 through 73. It starts with 'a tempo' and 'mf'. The right hand has a melodic line with slurs. The left hand has a steady accompaniment. A 'rit.' marking is present in measure 71. A pedal point is marked at the end of measure 73.

74

rit. mp

Ped. *

This system contains measures 74 through 79. The right hand has a melodic line with slurs. The left hand has a steady accompaniment. A 'rit.' marking is present in measure 76. A pedal point is marked at the end of measure 79.

80

a tempo

leggiero

Ped. *

Ped. *

Ped. *

This system contains measures 80 through 85. It begins with 'a tempo' and 'leggiero'. The right hand has a melodic line with slurs. The left hand has a steady accompaniment. Pedal points are marked at the end of measures 82, 84, and 85.

86 *Grandioso*

mf *cresc.* *f*

Ped. * Ped. * Ped. * Ped. *

92

decresc. *mp* *mf* *cresc.*

Ped. * Ped. * Ped. * Ped. * Ped. * Ped. *

98 *a tempo*

f *rit.* *mf*

Ped. * Ped. * Ped. * Ped. *

104

mf *mp*

Ped. * Ped. *

110 *a tempo*

mp *rit. poco* *a poco*

Ped. *

116 *a tempo*

rit. *Ped.* * *rit.*

122 *a tempo*

mp *Ped.* * *Ped.* * *Ped.* *

128 *a tempo*

rit. *leggiere* *leggiere* *leggiere*

133 *f sempre* *a tempo*

rit. poco a poco *rit. poco a poco* *rit. poco a poco* *rit. poco a poco*

138 *adagio* *Fine*

8va *8va* *8va* *8va* *8va* *adagio* *Fine*