



João SCHNIER

Arranger, Composer, Interpreter, Publisher, Teacher

France

About the artist

Joao Schnier, is a French clarinetist, composer and teacher, trained at Nîmes and Versailles Conservatoires, and holds a doctorate in music teacher education.

His music is an exploration of the many possible combinations between the continent of entertainment music and avant-garde and experimental music.

Artist page : <http://www.free-scores.com/Download-PDF-Sheet-Music-joaoschnier.htm>

About the piece



Title: In The Bleak Mid-Winter
Composer: Holst, Gustav
Arranger: SCHNIER, João
Copyright: Creative Commons Licence SA NC 4.0
Publisher: SCHNIER, João
Instrumentation: Clarinet Quartet
Style: Romantic

João SCHNIER on [free-scores.com](http://www.free-scores.com)

LICENSE

This sheet music requires an authorization :

- for public performances
- for use by teachers

Buy this license at :

<http://www.free-scores.com/license?p=aPaxvgUktU>



- share your interpretation
- comment
- pay the licence
- contact the artist

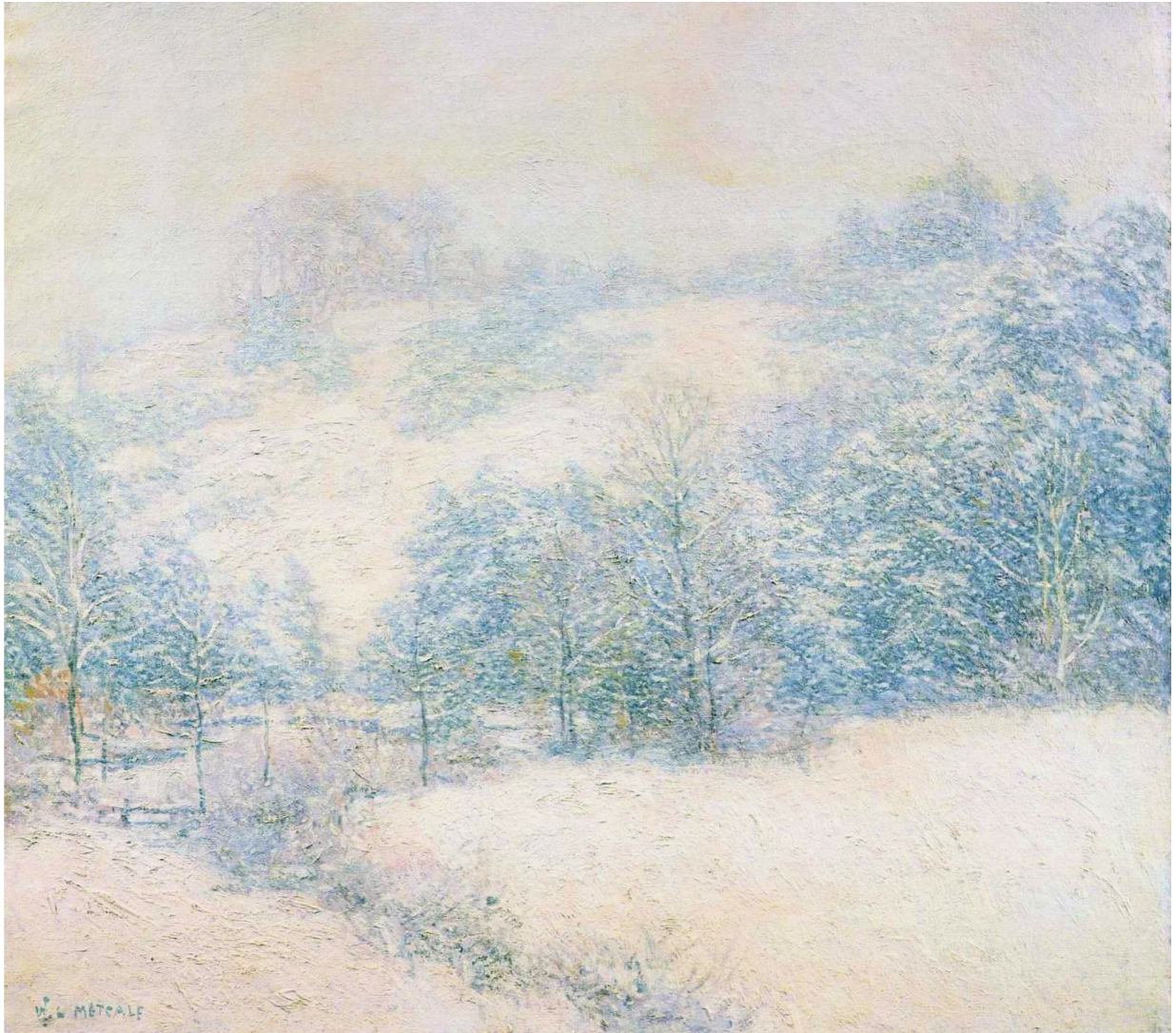
IN THE BLEAK MID-WINTER

ARRANGEMENT FOR 4 CLARINETS

MUSIC : GUSTAV HOLST (1874-1934)

LYRICS : CHRISTINA ROSSETTI (1830-1894)

ARRANGER : JOÃO SCHNIER



"The Winter's Festival" by Willard Metcalf [Public domain], via Wikimedia Commons

(c)2018 by João Schnier. Released under CC By SA NC 4.0

Molto Moderato $\text{♩} = 48$

Clarinettes in Bb
mp dolce, 2x : pp sempre al fine *mp*

Clarinettes in Bb
mp dolce, 2x : pp sempre al fine *mp*

Clarinettes in Bb
mp dolce, 2x : pp sempre al fine *mp*

Bass Clarinet
mp dolce, 2x : pp sempre al fine *mp*

5
Clar. Sib *mp* *p*

Clar. Sib *mp* *p*

Clar. Sib *mp* *p*

Cl. basse *mp* *p*

9
Clar. Sib *mf* *mf*

Clar. Sib *mf* *mf*

Clar. Sib *mf* *mf*

Cl. basse *mf* *mf*

13 *2x : Rit.* *Fine*

Clar. Sib *mp* *mf*

Clar. Sib *mp* *mf*

Clar. Sib *mp* *mf*

Cl. basse *mp* *mf*

17

Clar. Sib *mf*

Clar. Sib *mf*

Clar. Sib *mf*

Cl. basse *mf*

21

Clar. Sib *mf*

Clar. Sib *mf*

Clar. Sib *mf*

Cl. basse *mf*

25

Clar. Sib *f*

Clar. Sib *f*

Clar. Sib *f*

Cl. basse *f*

29

Clar. Sib *mf*

Clar. Sib *mf*

Clar. Sib *mf*

Cl. basse *mf*

mp

mp

mp

mp

D.C. al Fine

A CHRISTMAS CAROL.



i.

IN the bleak mid-winter
Frosty wind made moan ;
Earth stood hard as iron,
Water like a stone ;
Snow had fallen, snow on snow,
Snow on snow,
In the bleak mid-winter
Long ago.

ii.

Our God, heaven cannot hold Him
Nor earth sustain,
Heaven and earth shall flee away
When He comes to reign :
In the bleak mid-winter
A stable-place sufficed
The Lord God Almighty—
Jesus Christ.

iii.

Enough for Him whom Cherubim
Worship night and day,
A breastful of milk
And a mangerful of hay ;

Enough for Him whom Angels
Fall down before,
The ox and ass and camel
Which adore.

iv.

Angels and Archangels
May have gathered there,
Cherubim and Seraphim
Thronged the air ;
But only His Mother
In her maiden bliss
Worshiped the Beloved
With a kiss.

v.

What can I give Him,
Poor as I am?—
If I were a Shepherd
I would bring a lamb,
If I were a Wise Man
I would do my part,—
Yet what I can I give Him,—
Give my heart.

CONTACT AND LEGAL NOTICE

Thank you for reading and/or playing this work.
If you have any remark or if you're performing the work,
you can contact the composer at schnierjoao@yahoo.com,
it will be greatly appreciated !

This work by João Schnier is licensed under the license :

Attribution-NonCommercial-ShareAlike 4.0 International (CC BY-NC-SA 4.0)

Here is a human-readable summary of (and not a substitute for) the license :

« You are free to :

Share —

copy and redistribute the material in any medium or format

Adapt —

remix, transform, and build upon the material.

The licensor cannot revoke these freedoms as long as you follow the license terms.

Under the following terms:

Attribution —

You must give appropriate credit, provide a link to the license, and indicate if changes were made.

*You may do so in any reasonable manner,
but not in any way that suggests the licensor endorses you or your use.*

NonCommercial —

You may not use the material for commercial purposes.

ShareAlike —

*If you remix, transform, or build upon the material,
you must distribute your contributions under the same license as the original.*

No additional restrictions —

*You may not apply legal terms or technological measures that legally restrict others from doing
anything the license permits. »*

You can consult the full license here :

<https://creativecommons.org/licenses/by-nc-sa/4.0/legalcode>