



Tony Wilkinson

United Kingdom, Wroxham

Traumerei (Reverie Op.235)

Artist page : <https://www.free-scores.com/Download-PDF-Sheet-Music-tonywilkinson.htm>

About the piece



Title: Traumerei [Reverie Op.235]
Composer: Hayden, Warren Luse
Copyright: Creative Commons Licence 3.0
Publisher: Wilkinson, Tony
Instrumentation: Guitar solo (standard notation)
Style: Romantic
Comment: Typeset score.

Tony Wilkinson on [free-scores.com](https://www.free-scores.com)

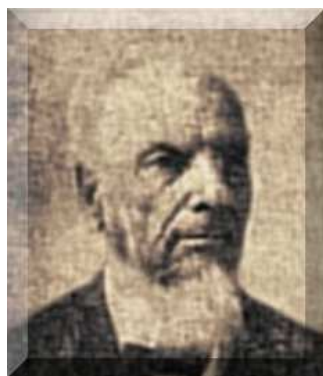


- listen to the audio
- share your interpretation
- comment
- contact the artist

Guitar Solo.

W. L. Hayden

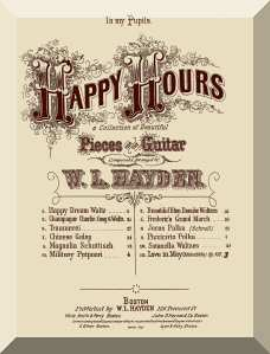
1835 - 1918



Träumerei

Reverie

Op. 235



Träumerei

(Reverie - Schumann)

Arr. W. L. Hayden. Op.235
1871

Andante espressivo.

Guitar

Measures 1-4: Treble clef, key signature of one sharp (F#), common time. Starts with a piano (*p*) dynamic. The melody is in the right hand, and the bass line is in the left hand. A section symbol (§) is placed above the first measure.

Measures 5-8: Continuation of the melody. Measure 8 ends with a *rit.* (ritardando) marking.

Measures 9-12: Measure 9 begins with *a tempo* and *mf* (mezzo-forte) dynamics. A *Glide.* marking is present above measure 10.

Measures 13-16: Continuation of the melody. Measure 16 ends with a *rit.* marking.

Measures 17-20: Continuation of the melody. Measure 17 begins with *a tempo* dynamics.

Measures 21-24: Continuation of the melody. Measure 24 ends with a *rit.* marking.

25 *a tempo*

29 *f* *rit.* *dim.* *Fine* *p*

33 *Moderato* *mf* *f* *fp*

38 *fp*

42 *f* *sf* *sf* *p*

47 *pp* *f* *sf* *sf* *f*

51 *f* *dim.* *D.S.*