



MICHAEL MAGATAGAN

United States (USA), SierraVista

Sonata in E Minor for Flute & Strings (HWV 375 Opus 1 No 17) Haendel, Georg Friedrich

About the artist

Im a software engineer. Basically, Im computer geek who loves to solve problems. I have been developing software for the last 25+ years but have recently rekindled my love of music. Many of my scores are posted with individual parts and matching play-along however, this is not always practical. If you would like individual parts to any of my scores or other specific tailoring, please contact me directly and I will try to accommodate your specific needs.

Artist page : <https://www.free-scores.com/Download-PDF-Sheet-Music-magataganm.htm>

About the piece

Title:	Sonata in E Minor for Flute & Strings [HWV 375 Opus 1 No 17]
Composer:	Haendel, Georg Friedrich
Arranger:	MAGATAGAN, MICHAEL
Copyright:	Public Domain
Publisher:	MAGATAGAN, MICHAEL
Instrumentation:	Flute and String Quartet
Style:	Baroque
Comment:	Georg Friedrich Händel (1685 – 1759) was a German, later British, baroque composer who spent the bulk of his career in London, becoming well known for his operas, oratorios, anthems, and organ concertos. Handel received important training in Halle and worked as a composer in Hamburg and Italy before settling in London in 1712; he became a naturalised British subject in 1727. He was strongly influenced both by the great composers of the... (more online)

MICHAEL MAGATAGAN on [free-scores.com](https://www.free-scores.com)



- listen to the audio
- share your interpretation
- comment
- contact the artist

12

F
V1
V2
Va
Vc

15

F
V1
V2
Va
Vc

II. Allegro (♩ = 108)

Flute
Violin 1
Violin 2
Viola
Cello

5

F

V1

V2

Va

Vc

mp

tr

8

F

V1

V2

Va

Vc

7

7

11

F

V1

V2

Va

Vc

7

7

14

F
V1
V2
Va
Vc

This system contains measures 14 through 17. The Flute (F) part features a melodic line with a trill in measure 17. The Violins (V1, V2) play a rhythmic pattern of eighth notes. The Viola (Va) and Violoncello (Vc) provide harmonic support with various note values.

18

F
V1
V2
Va
Vc

This system contains measures 18 through 20. The Flute (F) part has a rest in measure 18 and then enters in measure 19. The Violins (V1, V2) continue with their rhythmic pattern. The Viola (Va) and Violoncello (Vc) parts are active throughout the system.

21

F
V1
V2
Va
Vc

This system contains measures 21 through 23. The Flute (F) part has a melodic line with a trill in measure 23. The Violins (V1, V2) play a rhythmic pattern of eighth notes. The Viola (Va) and Violoncello (Vc) provide harmonic support with various note values.

24

F
V1
V2
Va
Vc

This system contains measures 24 through 27. The Flute (F) part begins with a sixteenth-note scale and includes a trill (tr) in measure 25. The Violins (V1, V2) play a rhythmic pattern of eighth notes. The Viola (Va) and Violoncello (Vc) provide harmonic support with quarter and eighth notes.

28

F
V1
V2
Va
Vc

This system contains measures 28 through 30. The Flute (F) part features a melodic line with various accidentals. The Violins (V1, V2) continue with their rhythmic pattern. The Viola (Va) and Violoncello (Vc) parts are more active, with the Vc showing some rests.

31

F
V1
V2
Va
Vc

This system contains measures 31 through 33. The Flute (F) part has a melodic line with a trill in measure 32. The Violins (V1, V2) play a steady eighth-note pattern. The Viola (Va) and Violoncello (Vc) parts continue their harmonic accompaniment.

34

Flute (F), Violin I (V1), Violin II (V2), Viola (Va), and Violoncello (Vc) parts for measures 34-36. The key signature is one sharp (F#) and the time signature is 3/4. Measure 34 features a flute solo with a grace note and a sixteenth-note triplet. Measures 35 and 36 show the strings and violins providing harmonic support with various rhythmic patterns.

37

Flute (F), Violin I (V1), Violin II (V2), Viola (Va), and Violoncello (Vc) parts for measures 37-39. Measure 37 continues the flute solo with a grace note and a sixteenth-note triplet. Measures 38 and 39 show the strings and violins providing harmonic support with various rhythmic patterns.

40

Flute (F), Violin I (V1), Violin II (V2), Viola (Va), and Violoncello (Vc) parts for measures 40-42. Measure 40 features a flute solo with a grace note and a sixteenth-note triplet. Measures 41 and 42 show the strings and violins providing harmonic support with various rhythmic patterns.

43

rit.

tr.

III. Grave (♩ = 50)

mp

p

p

p

p

tr.

6

11

F
V1
V2
Va
Vc

16

F
V1
V2
Va
Vc

22

F
V1
V2
Va
Vc

IV. Minuet (♩ = 108)

Flute

Violin 1

Violin 2

Viola

Cello

9

F

V1

V2

Va

Vc

17

F

V1

V2

Va

Vc

22

Flute (F), Violin I (V1), Violin II (V2), Viola (Va), and Violoncello (Vc) staves. Measure 22 features a trill (tr) on the flute. The key signature is one sharp (F#).

27

Flute (F), Violin I (V1), Violin II (V2), Viola (Va), and Violoncello (Vc) staves. Measure 27 features a trill (tr) on the flute. The key signature is one sharp (F#).

33

Flute (F), Violin I (V1), Violin II (V2), Viola (Va), and Violoncello (Vc) staves. Measure 33 features a trill (tr) on the flute. The first ending (1.) includes a trill (tr) on the flute. The second ending (2. rit.) includes a trill (tr) on the flute. The key signature is one sharp (F#).

Flute

Sonata in E Minor

G.F. Händel (HWV 375 Op. 1 No. 17) 1739

Interpretation for Flute & Strings by Mike Magatagan 2023

I. Adagio (♩ = 45)

mf

8

13

II. Allegro (♩ = 108)

mf

6

10

14

20

24

30

34

37

Musical staff 37-41 in G major, 4/4 time. It features a melodic line with trills and a fermata at the end.

42

Musical staff 42-46 in G major, 4/4 time. It features a fast, rhythmic passage with trills and a fermata at the end. The marking *rit.* is present above the staff.

III. Grave (♩ = 50)

8

Musical staff 8-11 in G major, 3/4 time. It features a slow, melodic line with trills and a fermata at the end. The marking *mp* is present below the staff.

12

Musical staff 12-16 in G major, 3/4 time. It features a fast, rhythmic passage with trills and a fermata at the end.

17

Musical staff 17-23 in G major, 3/4 time. It features a fast, rhythmic passage with trills and a fermata at the end.

24

Musical staff 24-30 in G major, 3/4 time. It features a fast, rhythmic passage with trills and a fermata at the end. The marking *rit.* is present above the staff.

IV. Minuet (♩ = 108)

12

Musical staff 12-21 in G major, 3/4 time. It features a fast, rhythmic passage with trills and a fermata at the end. The marking *mf* is present below the staff.

23

Musical staff 23-32 in G major, 3/4 time. It features a fast, rhythmic passage with trills and a fermata at the end.

33

Musical staff 33-37 in G major, 3/4 time. It features a fast, rhythmic passage with trills and a fermata at the end. The marking *rit.* is present above the staff.

33

Musical staff 33-37 in G major, 3/4 time. It features a fast, rhythmic passage with trills and a fermata at the end. The marking *rit.* is present above the staff.

Violin 1

Sonata in E Minor

G.F. Händel (HWV 375 Op. 1 No. 17) 1739

Interpretation for Flute & Strings by Mike Magatagan 2023

I. Adagio (♩ = 45)

mp

tr

II. Allegro (♩ = 108)

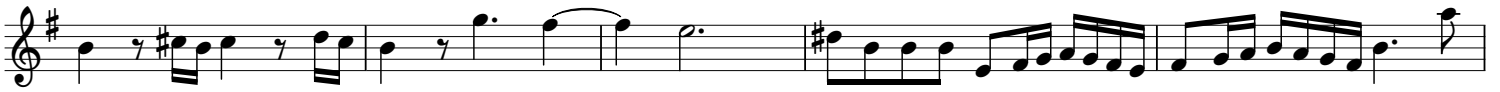
2

mp

30



34



39



42



III. Grave (♩ = 50)



11



20



IV. Minuet (♩ = 108)



10



17



27



Violin 2

Sonata in E Minor

G.F. Händel (HWV 375 Op. 1 No. 17) 1739

Interpretation for Flute & Strings by Mike Magatagan 2023

I. Adagio (♩ = 45)

mp

4

8

11

14

II. Allegro (♩ = 108)

mp

2

7

11

16

20

24

28

31

36

39

42

rit.

III. Grave (♩ = 50)

p

10

19

rit.

IV. Minuet (♩ = 108)

mp

11

17

24

33

rit.

1. 2.

Viola

Sonata in E Minor

G.F. Händel (HWV 375 Op. 1 No. 17) 1739

Interpretation for Flute & Strings by Mike Magatagan 2023

I. Adagio (♩ = 45)

mp

4

8

12

15

II. Allegro (♩ = 108)

mp

2

6

11

16

20

25

29



33



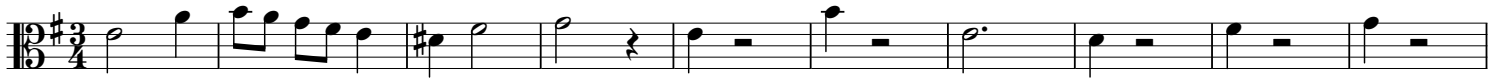
37



41



III. Grave (♩ = 50)



p

11



21



IV. Minuet (♩ = 108)



mp

9



17



27



Cello

Sonata in E Minor

G.F. Händel (HWV 375 Op. 1 No. 17) 1739

Interpretation for Flute & Strings by Mike Magatagan 2023

I. Adagio (♩ = 45)

mp

4

7

10

14

II. Allegro (♩ = 108)

2

mp

7

11

15

20

23

27

2

32

35

40

rit.

43

III. Grave (♩ = 50)

p

10

19

rit.

IV. Minuet (♩ = 108)

mp

10

17

24

31

rit.